

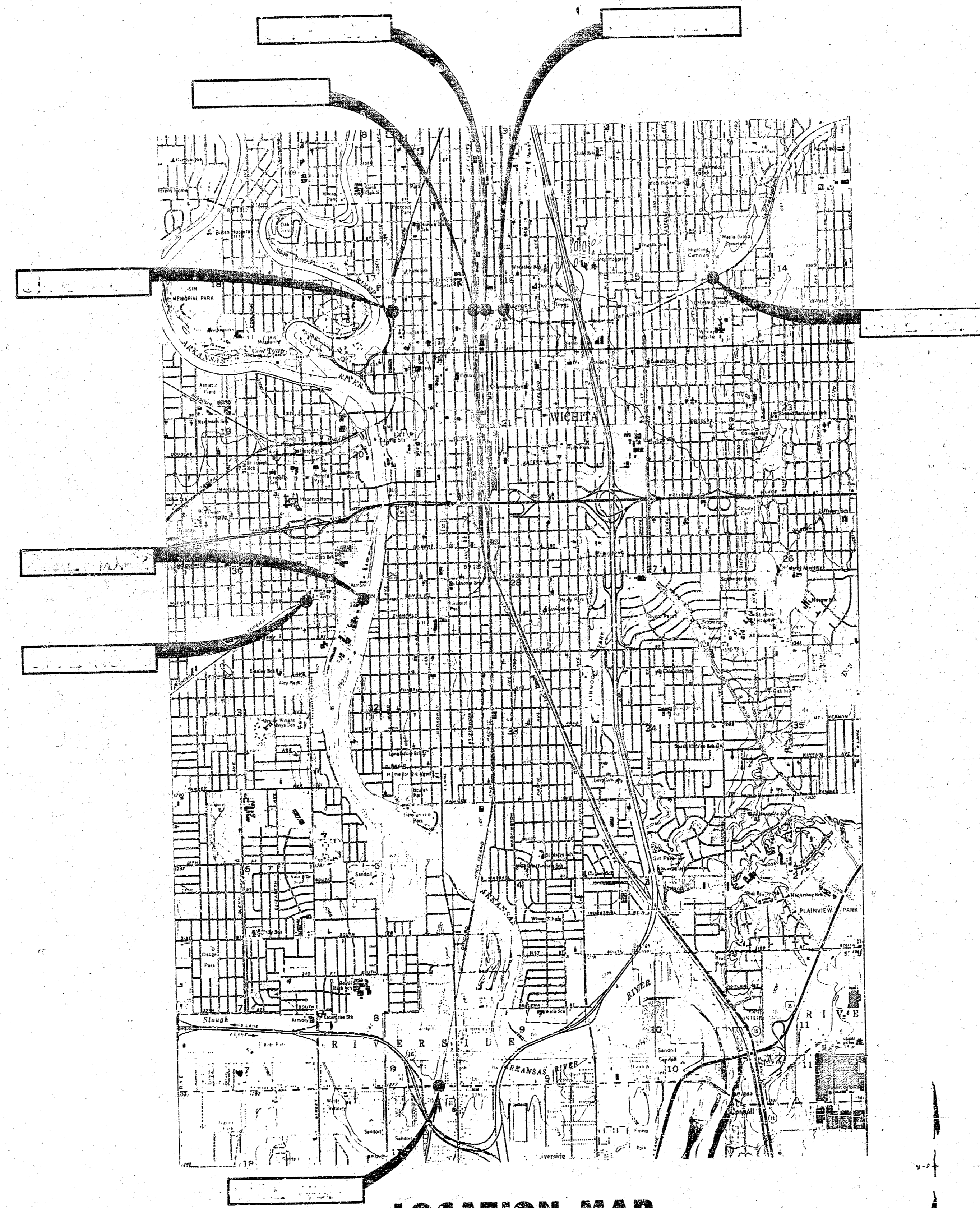
# WICHITA, KANSAS

## PAVEMENT REMOVAL AND RECONSTRUCTION IN CONNECTION WITH RUBBERIZED RAILROAD CROSSING INSTALLATION

SITE LOCATIONS

SITE 1:  
SITE 2:

INDEX TO DRAWINGS



**LOCATION MAP**

SCALE: 1" = 3000' (APPROX.)

MIKE LINDEBAK, P.E.  
CITY ENGINEER  
CITY OF WICHITA, KANSAS  
PROJECT NO. 472-76-245-81499-000-000-001

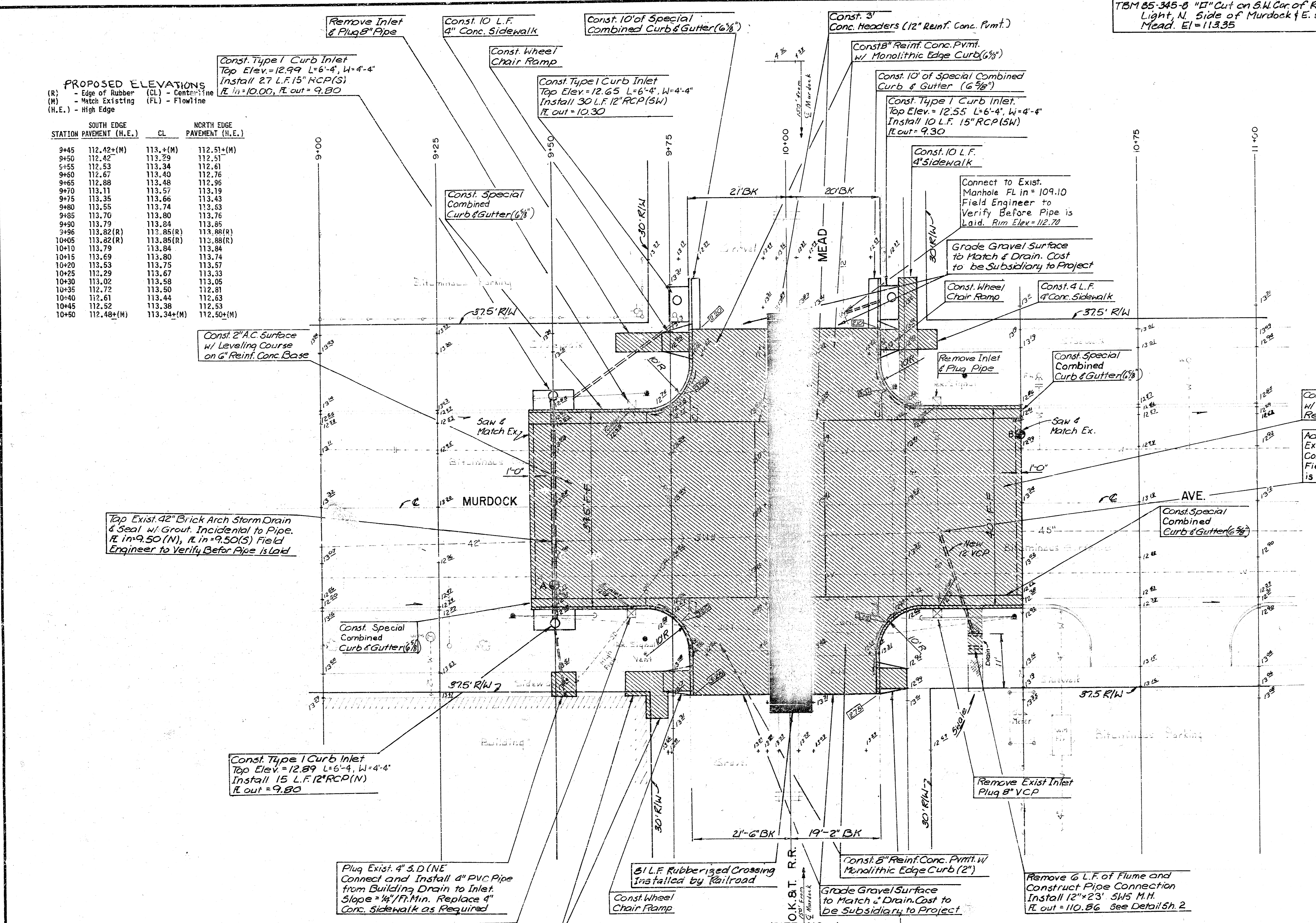
**WILSON  
& COMPANY**  
ENGINEERS  
ARCHITECTS  
WICHITA - KANSAS

**PROPOSED ELEVATIONS**  
 (R) - Edge of Rubber (CL) - Centerline  
 (M) - Match Existing (FL) - Flowline  
 (H.E.) - High Edge

STATION	SOUTH EDGE PAVEMENT (H.E.)	CL	NORTH EDGE PAVEMENT (H.E.)
9+45	112.42+(M)	113.4+(M)	112.51+(M)
9+50	112.42	113.29	112.51
9+55	112.53	113.34	112.61
9+60	112.67	113.40	112.76
9+65	112.88	113.48	112.96
9+70	113.11	113.57	113.19
9+75	113.35	113.66	113.43
9+80	113.55	113.74	113.63
9+85	113.70	113.80	113.76
9+90	113.79	113.84	113.85
9+96	113.82(R)	113.85(R)	113.88(R)
10+05	113.82(R)	113.85(R)	113.88(R)
10+10	113.79	113.84	113.84
10+15	113.69	113.80	113.74
10+20	113.53	113.75	113.57
10+25	113.29	113.67	113.33
10+30	113.02	113.58	113.05
10+35	112.72	113.50	112.81
10+40	112.61	113.44	112.63
10+45	112.52	113.38	112.53
10+50	112.48+(M)	113.34+(M)	112.50+(M)

TBM 85-345-B "D" Cut on S.W. Cor of RR Signal Light, N. Side of Murdock & E. Side of Mead. El = 113.35

- LEGEND**
- REMOVE EXISTING CONCRETE PAVT. CURB AND GUTTER, SIDEWALK AND BITUMINOUS PAVT. AND REPLACE AS SHOWN. (BY PAVING CONTRACTOR)
  - RUBBERIZED CROSSING MATERIAL (INSTALLED BY RAILROAD)
  - NEW Flowline Elev.
  - Core Sample  
A-3" Asphalt Over  
6" Conc. Base  
B-2 1/2" Asphalt Over  
5" Conc. Base
- Note: T.V. Inspection of 42" Brick Arch Storm Drain Indicates Possible Break in Water Line Near Trac. Any Additional Work in this Area is to be Considered Subsidiary.



Top Exist. 42" Brick Arch Storm Drain & Seal w/ Grout. Incidental to Pipe. R. in 9.50 (N), R. in 9.50 (S) Field Engineer to Verify Before Pipe is Laid

Const. Type 1 Curb Inlet Top Elev. = 12.89 L=6'-4", W=4'-4" Install 15 L.F. 12" RCP (N) R. out = 9.80

Plug Exist. 4" S.D. Line Connect and Install 4" PVC Pipe from Building Drain to Inlet. Slope = 1/4" / Ft. Min. Replace 4" Conc. Sidewalk as Required

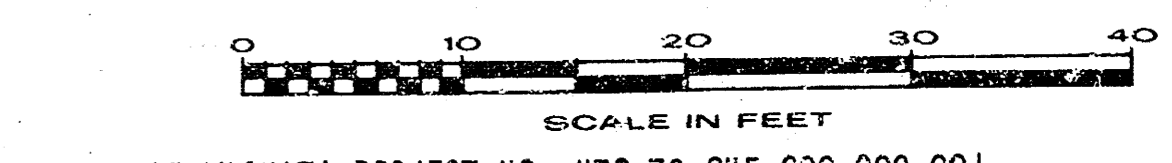
Remove Exist. Inlet Plug 4" PVC Pipe & 6" VCPN  
 Const. 8' L.F. 4" Conc. Sidewalk  
 Const. 4' L.F. 4" Conc. Sidewalk

**MURDOCK AT MEAD (SITE NO. 7)**

NEW TOP OF RAIL ELEVATIONS

	Track 1
N. Curb Line	113.88
E. Curb Line	113.85
S. Curb Line	113.82

Remove 6' L.F. of Flume and Construct Pipe Connection Install 12"x23" SWS M.H. R. out = 110.86 See Detail Sh. 2



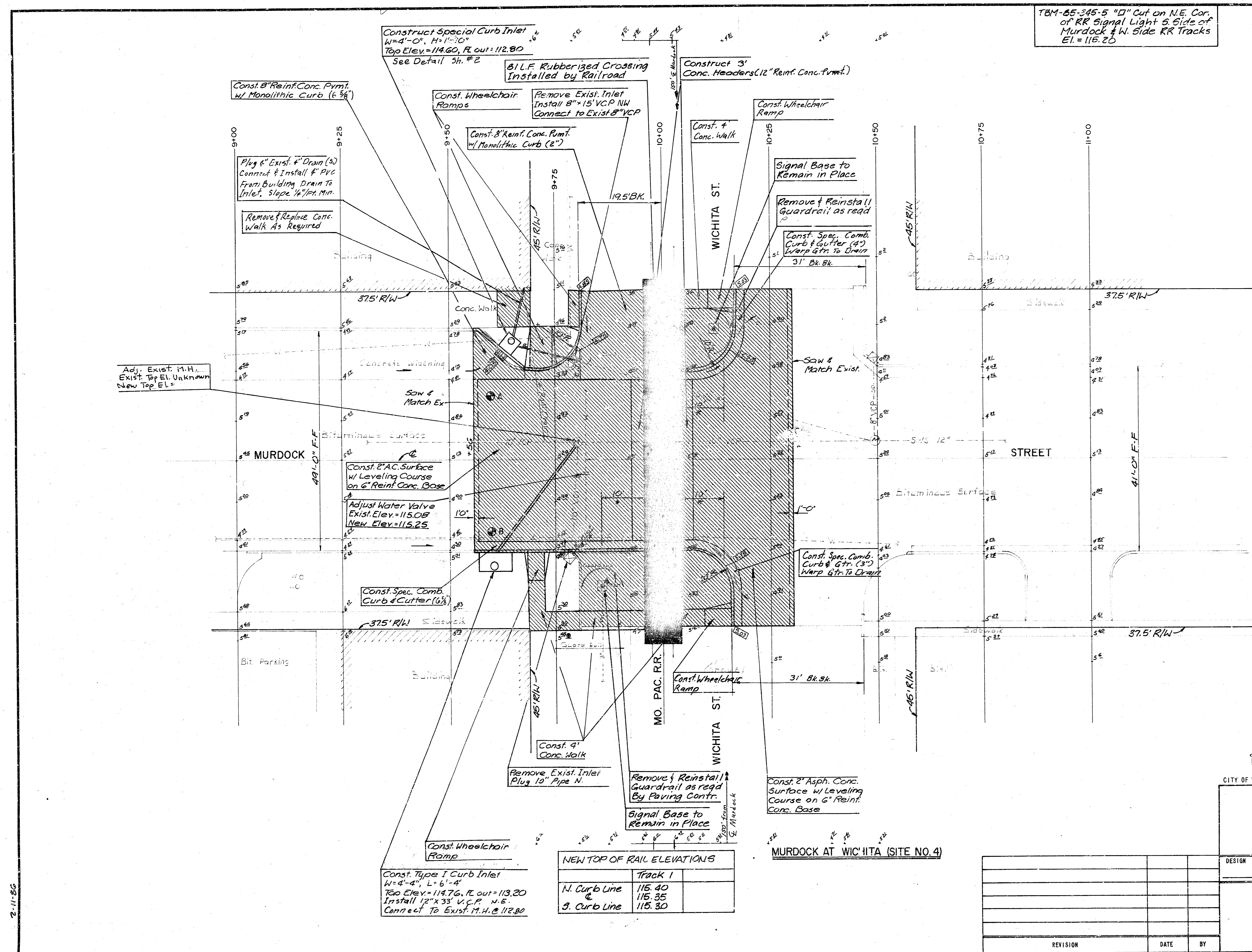
CITY OF WICHITA PROJECT NO. 472-76-245-000-000-001

WICHITA, KANSAS  
 RUBBERIZED RAILROAD CROSSING  
 MURDOCK AT MEAD (SITE NO. )  
 PAVING PLAN

REVISION	DATE	BY

DESIGN	DRAWN		DATE:
	JPM/HEK		FEB. 1986
			FILE NO.
			85-345
			SHEET NO.
			OF

2-11-86



TBM-85-345-5 "D" Cut on N.E. Cor. of RR Signal Light S. Side of Murdock & W. Side RR Tracks  
 EL = 115.25

**LEGEND**

SYMBOL	DESCRIPTION
[Hatched Box]	REMOVE EXISTING CONCRETE PYMT. CURB AND GUTTER, SIDEWALK AND BITUMINOUS PYMT. AND REPLACE AS SHOWN. (BY PAVING CONTRACTOR)
[Solid Black Box]	RUBBERIZED CROSSING MATERIAL (INSTALLED BY RAILROAD)

**NOTES:**

- 322 New Flowline Elev.
- \* Transition curb from full height to no curb in 10'
- Core Sample:  
 A- 4" Asphalt Over Very Poor Conc. Base  
 B- 4" Asphalt Over Very Poor Conc. Base

**PROPOSED ELEVATIONS**

(R) - Edge of Rubber (CL) - Centerline  
 (M) - Match Existing (FL) - Flowline  
 (H.E.) - High Edge

STATION	SOUTH EDGE PAVEMENT (H.E.)	CL	NORTH EDGE PAVEMENT (H.E.)
9+56	114.32(M)	115.15(M)	114.21(M)
9+60	114.31	115.17	114.20
9+65	114.37	115.20	114.30
9+70	114.53	115.23	114.48
9+75	114.76	115.27	114.76
9+80	114.90	115.30	115.03
9+85	115.17	115.33	115.23
9+90	115.27	115.34	115.35
9+96	115.30(R)	115.35(R)	115.40(R)
10+04	115.30(R)	115.35(R)	115.40(R)
10+10	115.27	115.35	115.37
10+15	115.20	115.34	115.30
10+20	115.13	115.32	115.16
10+25	115.05	115.31	115.02
10+30	114.98(M)	115.30(M)	114.88(M)

**NEW TOP OF RAIL ELEVATIONS**

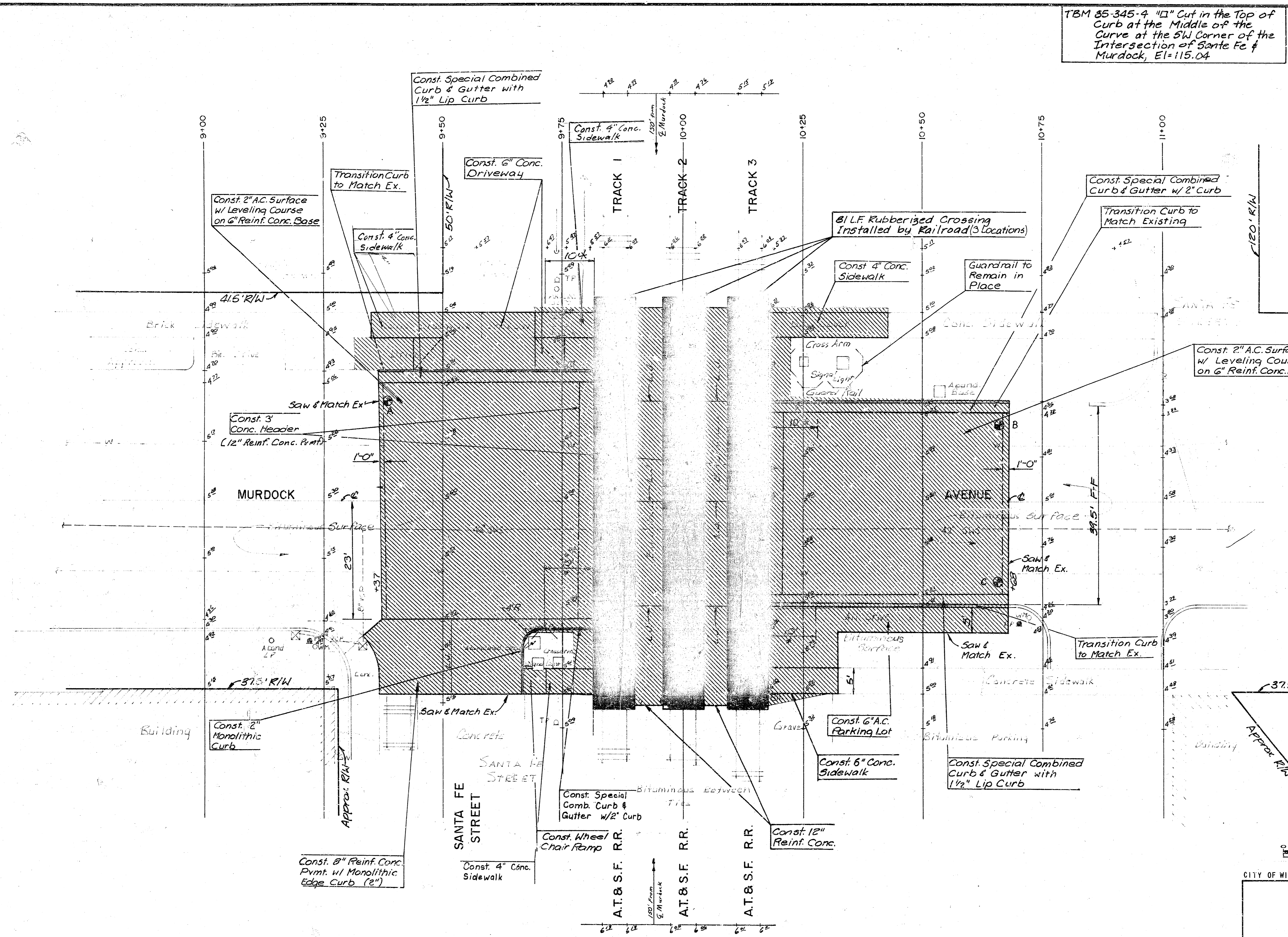
	Track 1
N. Curb Line	115.40
E. Curb Line	115.35
S. Curb Line	115.30

SCALE IN FEET  
 0 10 20 30 40  
 CITY OF WICHITA PROJECT NO. 472-76-245-81499-000-001

WICHITA, KANSAS  
 RUBBERIZED RAILROAD CROSSING  
 MURDOCK AT WICHITA (SITE NO. 4)  
 PAVING PLAN

DESIGN	DRAWN	DATE
MEL/JMR		FEB. 1986
FILE NO.	85-345	
SHEET NO.	OF	
WILSON & COMPANY ENGINEERS & ARCHITECTS	WICHITA - KANSAS	
REVISION	DATE	BY

2-11-86



TBM 85-345-4 "11" Cut in the Top of Curb at the Middle of the Curve at the SW Corner of the Intersection of Santa Fe & Murdock, EL=115.04

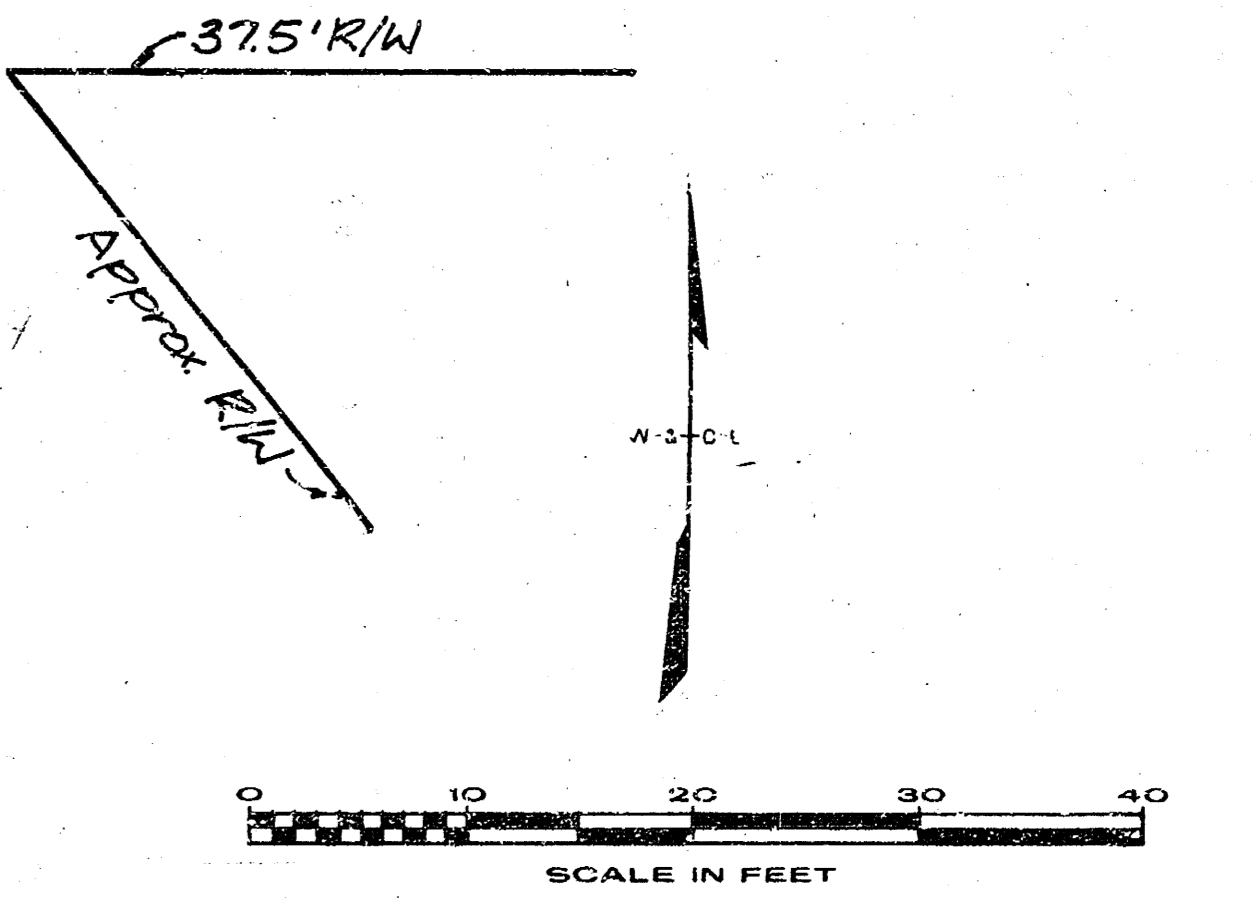
**LEGEND**

SYMBOL	DESCRIPTION
[Hatched Box]	REMOVE EXISTING CONCRETE PAVT., CURB AND GUTTER, SIDEWALK AND BITUMINOUS PAVT. AND REPLACE AS SHOWN. (BY PAVING CONTRACTOR)
[Solid Black Box]	RUBBERIZED CROSSING MATERIAL (INSTALLED BY RAILROAD)

Note:  
 \* Transition Curb from full height to no curb in 10'  
 • Core Sample  
 A - 4 1/4" Asphalt Over Conc. Base  
 B - 6 1/4" Asphalt Over 6" Conc. Base  
 C - 5" Asphalt Over 6" Conc. Base

**PROPOSED ELEVATIONS**  
 (R) - Edge of Rubber (CL) - Centerline  
 (M) - Match Existing (FL) - Flowline  
 (H.E.) - High Edge

STATION	SOUTH EDGE PAVEMENT (H.E.)	CL	NORTH EDGE PAVEMENT (H.E.)
9+37	114.85+(M)	115.44+(M)	115.14+(M)
9+42	115.02	115.51	115.25
9+47	115.20	115.60	115.34
9+52	115.39	115.70	115.51
9+57	115.58	115.82	115.65
9+62	115.78	115.95	115.84
9+67	115.97	116.06	116.01
9+72	116.07	116.13	116.13
9+77	116.15	116.18	116.21
9+82	116.17(R)	116.20(R)	116.23(R)
10+18	116.17(R)	116.20(R)	116.23(R)
10+23	116.14	116.18	116.20
10+28	116.06	116.13	116.11
10+33	115.90	116.04	115.97
10+38	115.71	115.92	115.78
10+43	115.49	115.78	115.55
10+48	115.27	115.64	115.33
10+53	115.06	115.49	115.12
10+58	114.86	115.37	114.94
10+63	114.69	115.25	114.75
10+68	114.53+(M)	115.15+(M)	114.62+(M)



MURDOCK, EAST OF SANTA FE (SITE NO. 1)

**NEW TOP OF RAIL ELEVATIONS**

	Track 1	Track 2	Track 3
N. Curb Line	116.23	116.23	116.23
CL	116.20	116.20	116.20
S. Curb Line	116.17	116.17	116.17

REVISION	DATE	BY

DESIGN	MEK	DATE:	FEB. 1986
DRAWN		FILE NO.:	85-345
WILSON & COMPANY ENGINEERS & ARCHITECTS WICHITA - KANSAS		SHEET NO.:	
		OF	

2-11-86