

CITY OF WICHITA, KANSAS  
 MICHAEL E. LINDEBAK, P.E., CITY ENGINEER  
**STREET IMPROVEMENTS**

DECELERATION LANE ON THE NORTH SIDE OF CENTRAL AVENUE  
 (TO SERVE LOTS 1 THROUGH 48 INCLUSIVE, BLOCK 1)

IN  
**CORPORATE LAKES**  
 CITY OF WICHITA PROJECT NO. 472-76-245-81942-000-000-001

SHEET NO.	TOTAL SHEETS
1	10

**INDEX OF SHEETS**

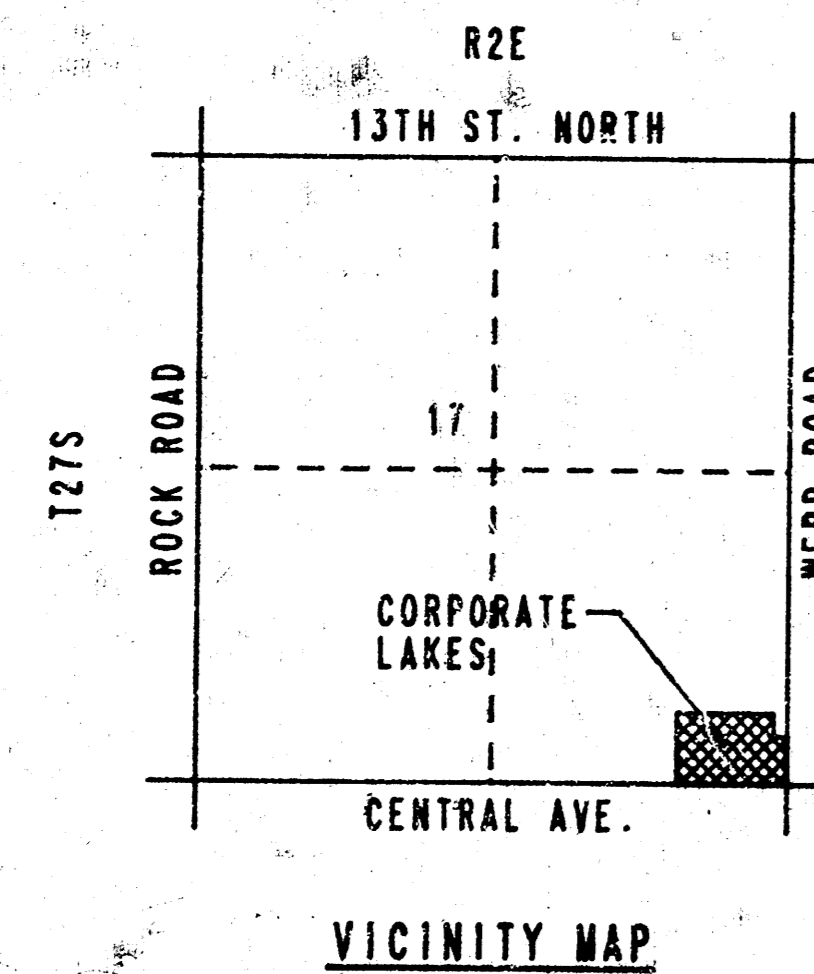
1. TITLE SHEET
2. PLAN
3. TYPICAL SECTION AND MISC. PAVING DETAILS
4. REINFORCED CONCRETE DRIVEWAY DETAILS
5. PAVING PLAN SHEETS
6. PAVING PLAN SHEETS
7. STD. TYPE 1A CURB INLET DETAILS
8. MANHOLE FRAME AND COVER DETAILS
- 9.-10. CROSS SECTIONS

**PROJECT SURVEY CONTROL**

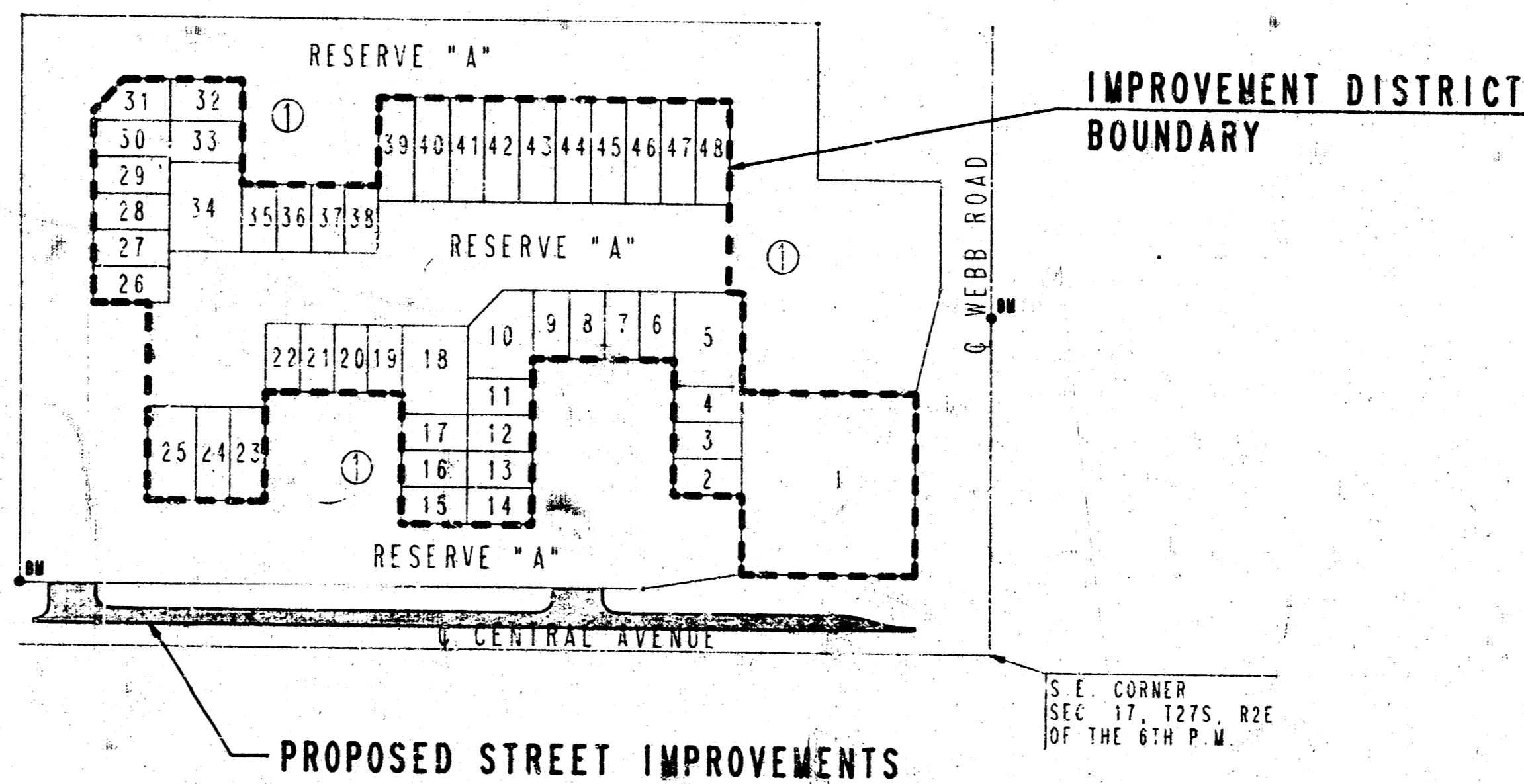
PROJECT DATUM: CITY OF WICHITA DATUM  
 BENCH MARK : CHISELED "O" ON SOUTH END OF EAST CURB AT EAST ENTRANCE TO ART MUSEUM. (8 STA. 0+5) ELEV. +165.35  
 BENCH MARK : CHISELED "O" ON NORTH END OF WEBB ROAD MEDIAN LOCATED NORTH OF CENTRAL. ELEV. +174.00

**EARTHWORK**

EXCAVATION  
 Y-SECTIONS 779 CU. YDS.  
 COMPACTED FILL  
 X-SECTIONS 21 CU. YDS.  
 SUBGRADE MANIPULATION 1,525.50 S.Y.



**INDEX #760258**



**GENERAL NOTES**

UNDERGROUND UTILITY SERVICE LINES AND OVERHEAD UTILITY POLE LINES ARE TO BE ADJUSTED AS NECESSARY BY OTHERS PRIOR TO CONSTRUCTION UNLESS THE PLANS SPECIFICALLY CALL FOR THEIR ADJUSTMENT BY THE CONTRACTOR. EXISTING UTILITIES AND THEIR LOCATION, AS SHOWN ON THE PLANS, REPRESENT THE BEST INFORMATION OBTAINABLE FOR DESIGN. LOCATION INFORMATION HAS BEEN OBTAINED FROM THE VARIOUS UTILITY COMPANIES AND IS EITHER FROM COMPANY RECORD DRAWINGS OR COMPANY PROVIDED FIELD LOCATIONS. THE CONTRACTOR WILL BE REQUIRED TO WORK AROUND EXISTING UTILITIES WITHIN THE RIGHT-OF-WAY WHICH DO NOT CONFLICT WITH PROPOSED CONSTRUCTION.

RUBBLE FROM THE REMOVAL OF MISCELLANEOUS STRUCTURES AND EXCESS EXCAVATION WHICH IS TO BE WASTED SHALL BE DISPOSED OF ON SITES TO BE PROVIDED BY THE CONTRACTOR. THESE SITES SHALL BE APPROVED BY THE ENGINEER AS TO SUITABILITY, APPEARANCE AND SITE LOCATION. LOCATIONS THAT, IN THE OPINION OF THE ENGINEER, WILL LEAVE AN UNSIGHTLY APPEARANCE WILL NOT BE APPROVED.

CONTRACTOR SHALL SATISFY HIMSELF OF SUBSURFACE CONDITIONS PRIOR TO CONSTRUCTION.

TREES AND SHRUBS IN PUBLIC RIGHT-OF-WAY WHICH ARE IN DIRECT CONFLICT WITH PROPOSED NEW CONSTRUCTION SHALL BE REMOVED BY THE CONTRACTOR WITH THE ENGINEER'S APPROVAL. TREES AND SHRUBS WHICH ARE NOT IN DIRECT CONFLICT WITH PROPOSED NEW CONSTRUCTION SHALL BE SAVED AND PROTECTED FROM DAMAGE.

CONTRACTOR WILL BE REQUIRED TO PROVIDE A MINIMUM ADVANCE NOTICE OF TWENTY-FOUR (24) HOURS TO UTILITY COMPANIES PRIOR TO STARTING ANY EXCAVATION AS FOLLOWS:

SOUTHWESTERN BELL TELEPHONE COMPANY	1-316-571-2611
CABLEVISION	262-4270 OR 263-2081
WPI GAS SERVICE	263-7511
KANSAS GAS & ELECTRIC	264-1141
CITY OF WICHITA WATER DEPARTMENT	268-4909
CITY OF WICHITA SEWER DEPARTMENT	268-4071
ARLKA GAS COMPANY	942-8359 OR 263-8161

LIMITS OF EARTHWORK SHALL MATCH EXISTING GROUND ELEVATIONS AT THE RIGHT-OF-WAY LINE UNLESS OTHERWISE NOTED ON THE PLANS WITH A NEW FINISHED GRADE ELEVATION. WHEN A NEW FINISHED GRADE ELEVATION IS SHOWN, THE EARTHWORK SHALL EXTEND ONE FOOT BEYOND THE RIGHT-OF-WAY LINE AND THEN SLOPED UP OR DOWN USING PERMISSIBLE SLOPES TO MATCH THE EXISTING GROUND SURFACE.

THE CONTRACTOR SHALL BE RESPONSIBLE FOR PRESERVING PROPERTY IRONS. THE CONTRACTOR WILL BE REQUIRED TO RE-ESTABLISH ANY PROPERTY IRONS WHICH ARE DAMAGED OR DESTROYED BY HIS CONSTRUCTION OPERATIONS. SUCH IRONS SHALL BE RE-ESTABLISHED BY A LICENSED LAND SURVEYOR IN ACCORDANCE WITH STATE LAWS.

THE WATER DEPARTMENT SHALL FIELD LOCATE WATER VALVES ONE TIME DURING CONSTRUCTION WHEN REQUESTED BY THE CONTRACTOR. IT SHALL BE THE CONTRACTOR'S RESPONSIBILITY TO PRESERVE SUCH FIELD LOCATIONS DURING THE CONSTRUCTION PROCESS. WATER VALVES, WATER VALVE BOXES OR FIRE HYDRANTS DAMAGED DURING CONSTRUCTION SHALL BE REPAIRED BY THE CONTRACTOR AT HIS OWN EXPENSE.

THE CONTRACTOR SHALL ADJUST WATER VALVE BOXES AS DIRECTED BY THE ENGINEER. THIS WORK TO BE SUBSIDIARY TO OTHER BID ITEMS.

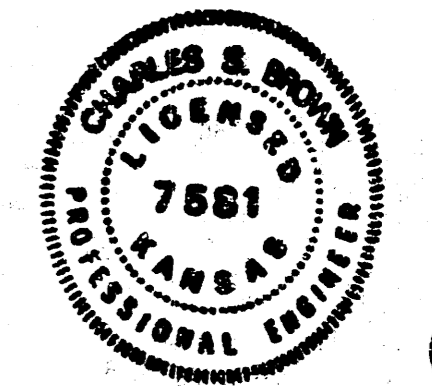
INLET HOOKUPS SHALL BE BID PER EACH REGARDLESS OF INLET SIZE.

TRAFFIC IN CENTRAL AVE. SHALL BE CARRIED THROUGH CONSTRUCTION.

THE CONTRACTOR WILL BE PERMITTED TO BID ONLY ONE OF THE ALTERNATE TYPES OF SUBGRADE TREATMENT. THE TYPE BID BY THE SUCCESSFUL BIDDER WILL BE THE TYPE OF SUBGRADE TREATMENT USED TO CONSTRUCT THE PROJECT.

CITY OF WICHITA FORCES WILL REMOVE AND REPLACE EXISTING STREET SIGNING AS CONSTRUCTION IS STARTED AND COMPLETED. THE CONTRACTOR WILL COORDINATE HIS ACTIVITIES WITH THE DEPARTMENT OF OPERATIONS AND MAINTENANCE RELATIVE TO REMOVAL OR INSTALLATION OF STREET SIGNING.

SEPTEMBER, 1989  
 PLANS PREPARED BY  
 PROFESSIONAL ENGINEERING CONSULTANTS, P.A.  
 ENGINEERS  
 WICHITA, KANSAS



FILMED FROM THE BEST AVAILABLE COPY