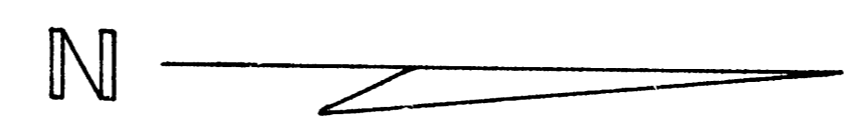
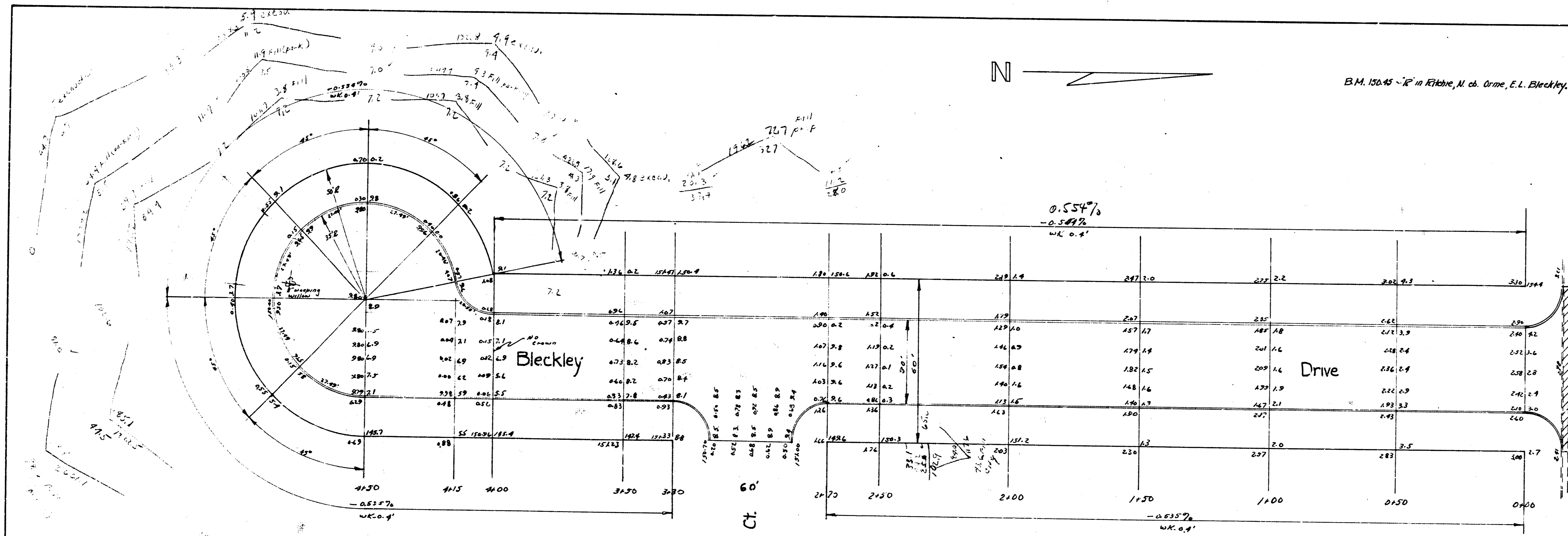


#2

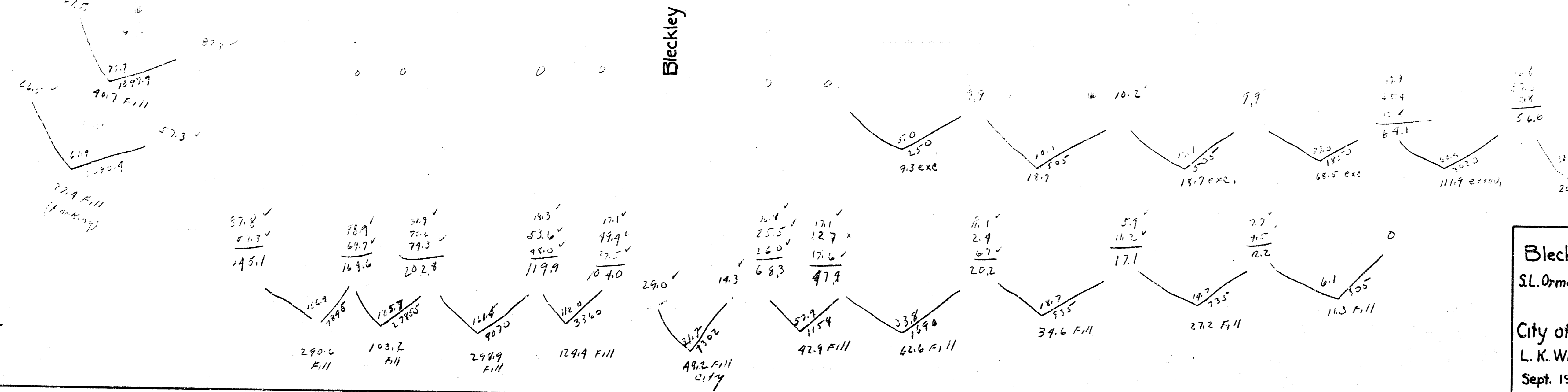


B.M. 150.45 - R' in Rikhe, N. of Orme, E.L. Bleckley.

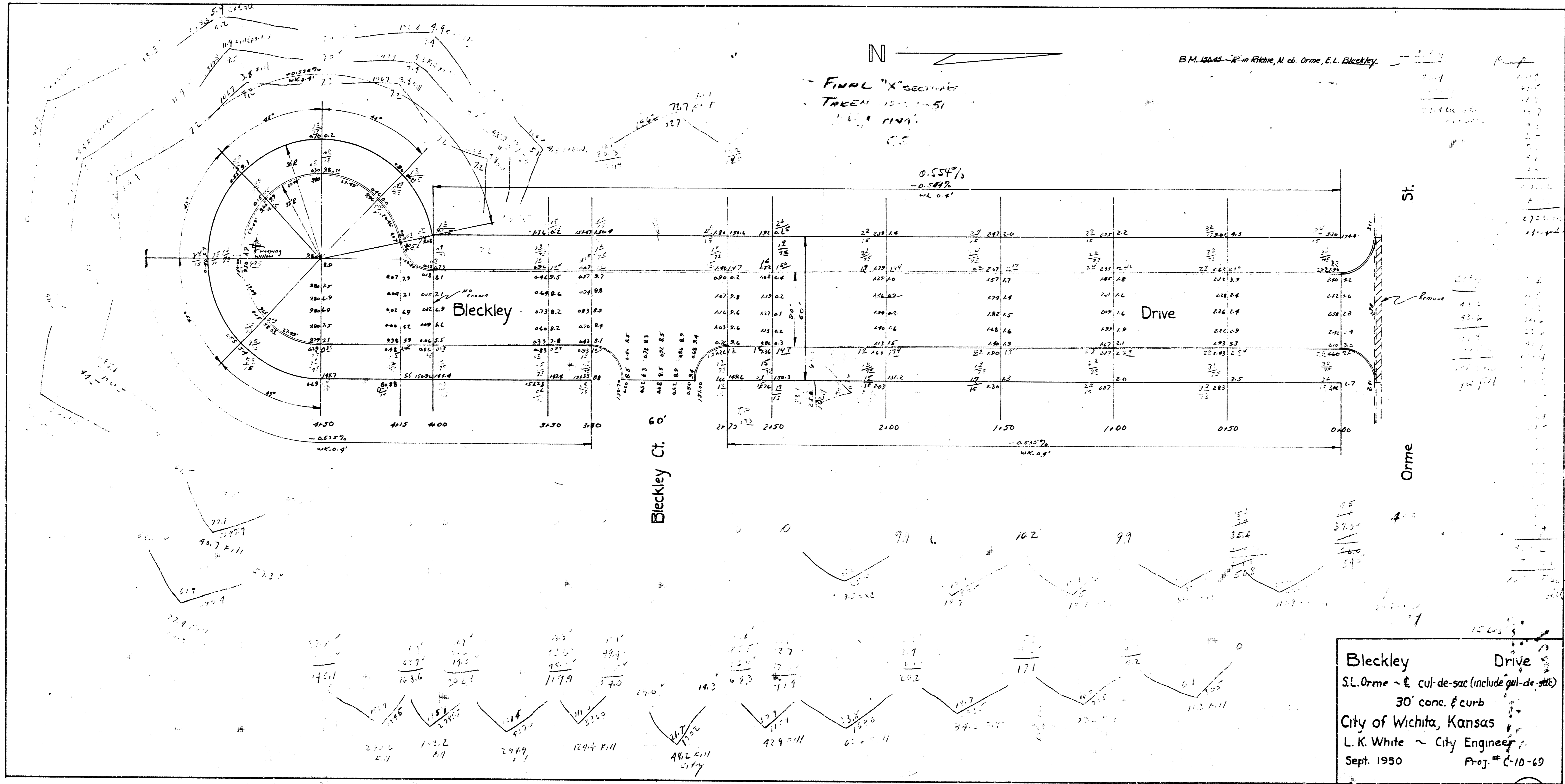


St.
Remove
Orme

City	16.2
45.2	77.2
93.6	34.0
71.8	65.0
41.0	43.7
164.0	154.4
yard fill	27.4
	163.0
	46.7
	77.4
	44.5
	36.0
	75.7
	49.4
	3.8
	7.3
	3.3
	72.9
	197.2
	770.0
	1620.5
	1660



Bleckley Drive
 S.L. Orme - E. cut-de-sac (include cul-de-sac)
 30' conc. & curb
 City of Wichita, Kansas
 L. K. White - City Engineer
 Sept. 1950 Proj. # C-10-69



Bleckley Drive
 S.L. Orme - & cut-de-sac (include gal-de-sac)
 30' conc. & curb
 City of Wichita, Kansas
 L. K. White - City Engineer
 Sept. 1950
 Proj. # C-10-69