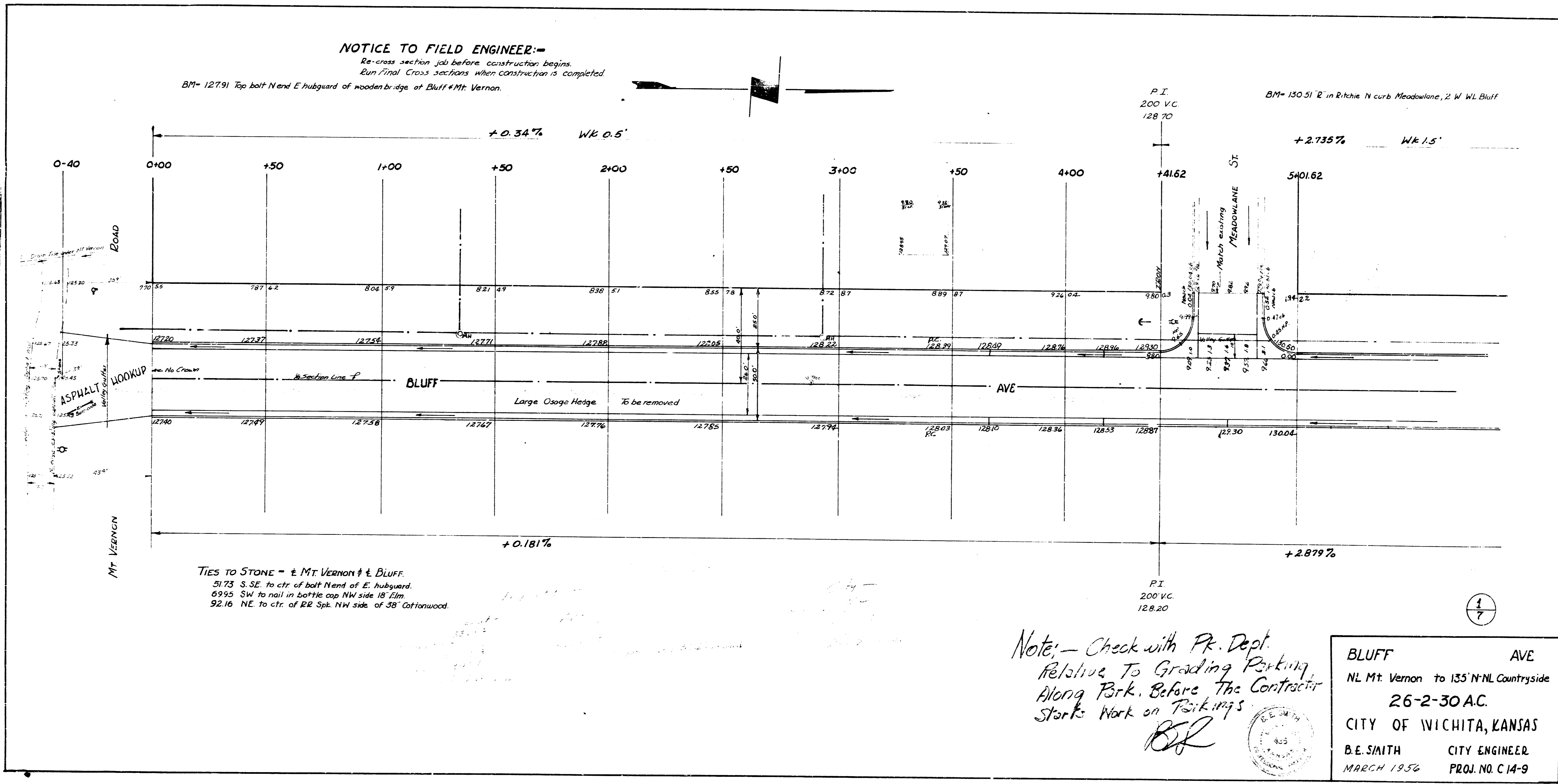


NOTICE TO FIELD ENGINEER:-

Re-cross section job before construction begins.
 Run Final Cross sections when construction is completed.
 BM- 127.91 Top bolt N end E hubguard of wooden bridge at Bluff & Mt. Vernon.



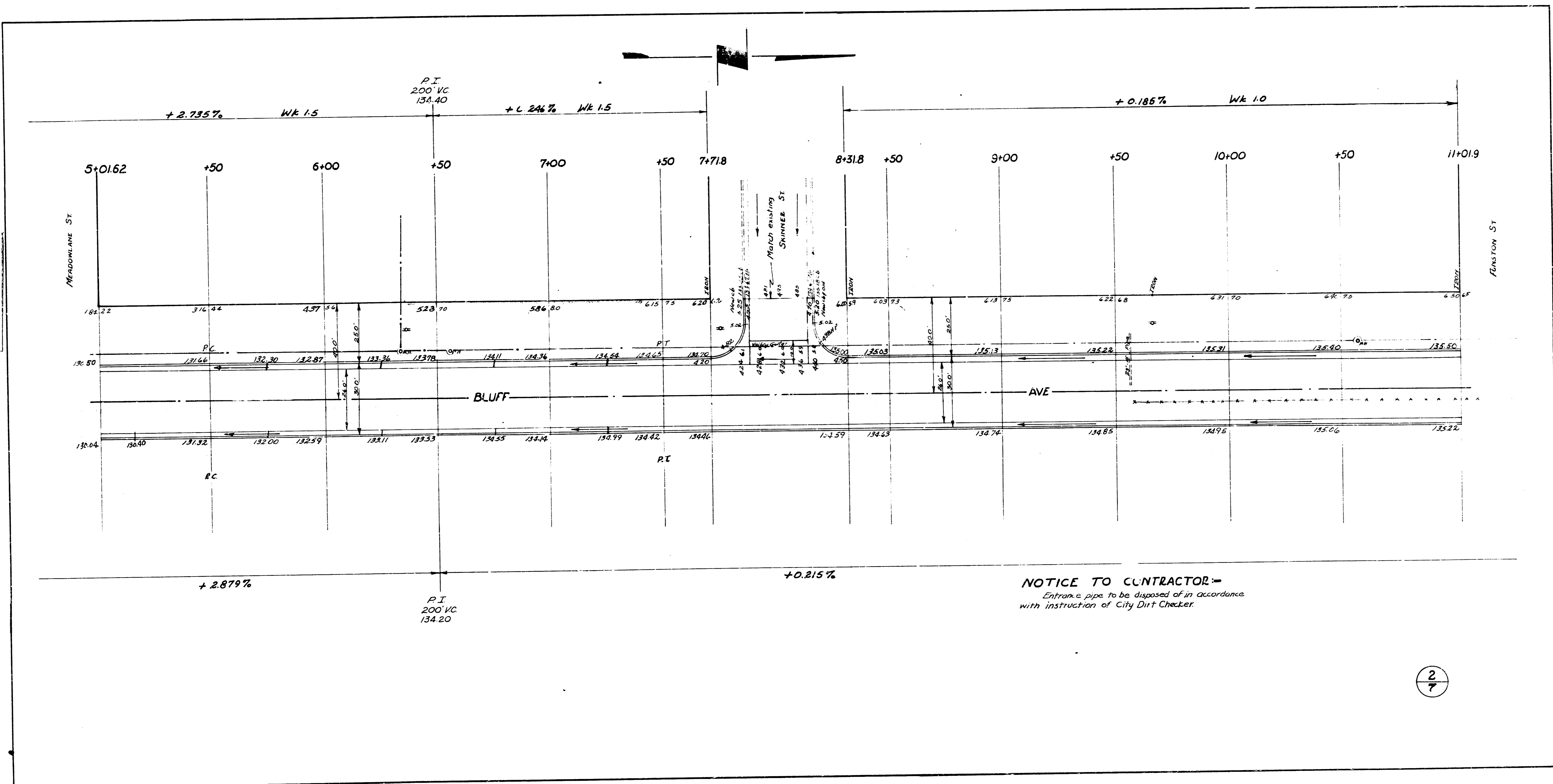
TIES TO STONE - E. MT. VERNON & E. BLUFF.
 51.75 S. SE. to ctr. of bolt N end of E. hubguard.
 69.95 SW to nail in bottle cap NW side 18 Elm.
 92.16 NE to ctr. of RR Sp. NW side of 38 Cottonwood.

*Note: - Check with Pk. Dept.
 Relative To Grading Parking
 Along Park. Before The Contractor
 Starts Work on Parkings*
B.E.

BLUFF AVE
 NL Mt. Vernon to 135' N. NL Countryside
 26-2-30 A.C.
CITY OF WICHITA, KANSAS
 B.E. SMITH CITY ENGINEER
 MARCH 1936 PROJ. NO. C 14-9



Checked by M. G. ...
 P. L. ...
 E. L. ...



BM= 135.87 "R" in Kitchie Sec Funston WL Bluff

BM= 141.45 "K" in King ctr. Wk. NS Countryside Plaza f WL Bluff

