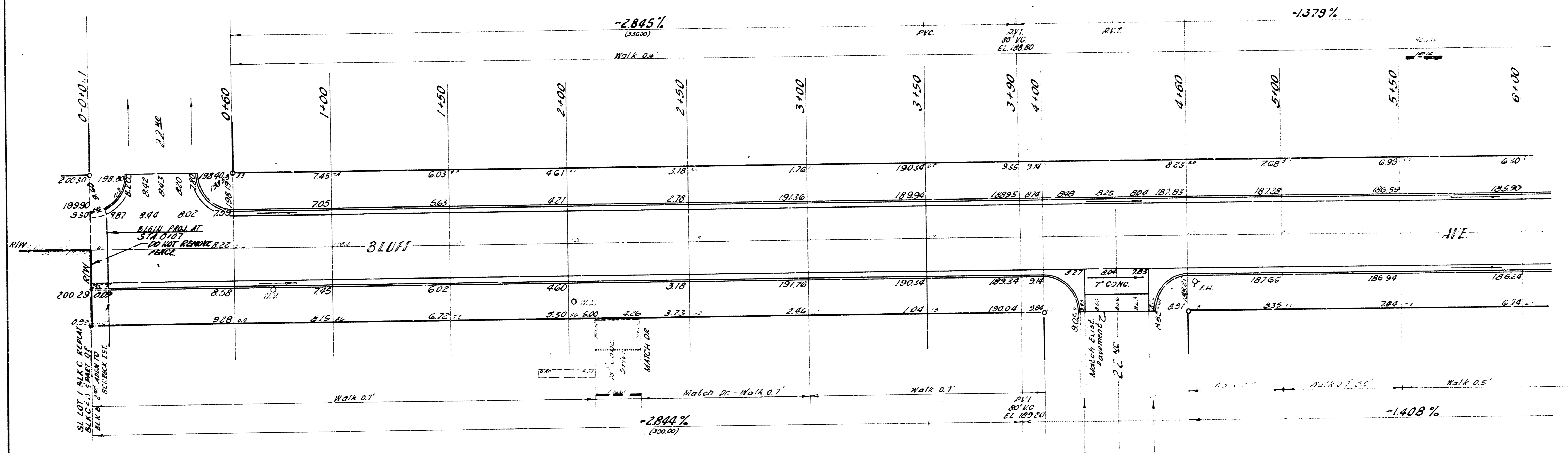
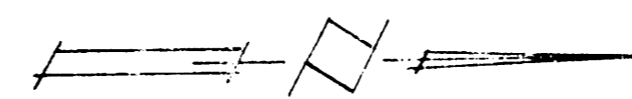


5 M 203.51 "x" Cut on Headwall, Ent Curb N. Side 2144
 8 M 197.55 S.W. Cor. of Bluff Ho. # 2252 N Bluff
 3 M 180.37 "M" of Municipal Fire Hydrant S.E. Cor
 Bluff Ho. # 2010
 8 M 193.22 S.E. Cor. of Bluff Ho. # 2010 22nd



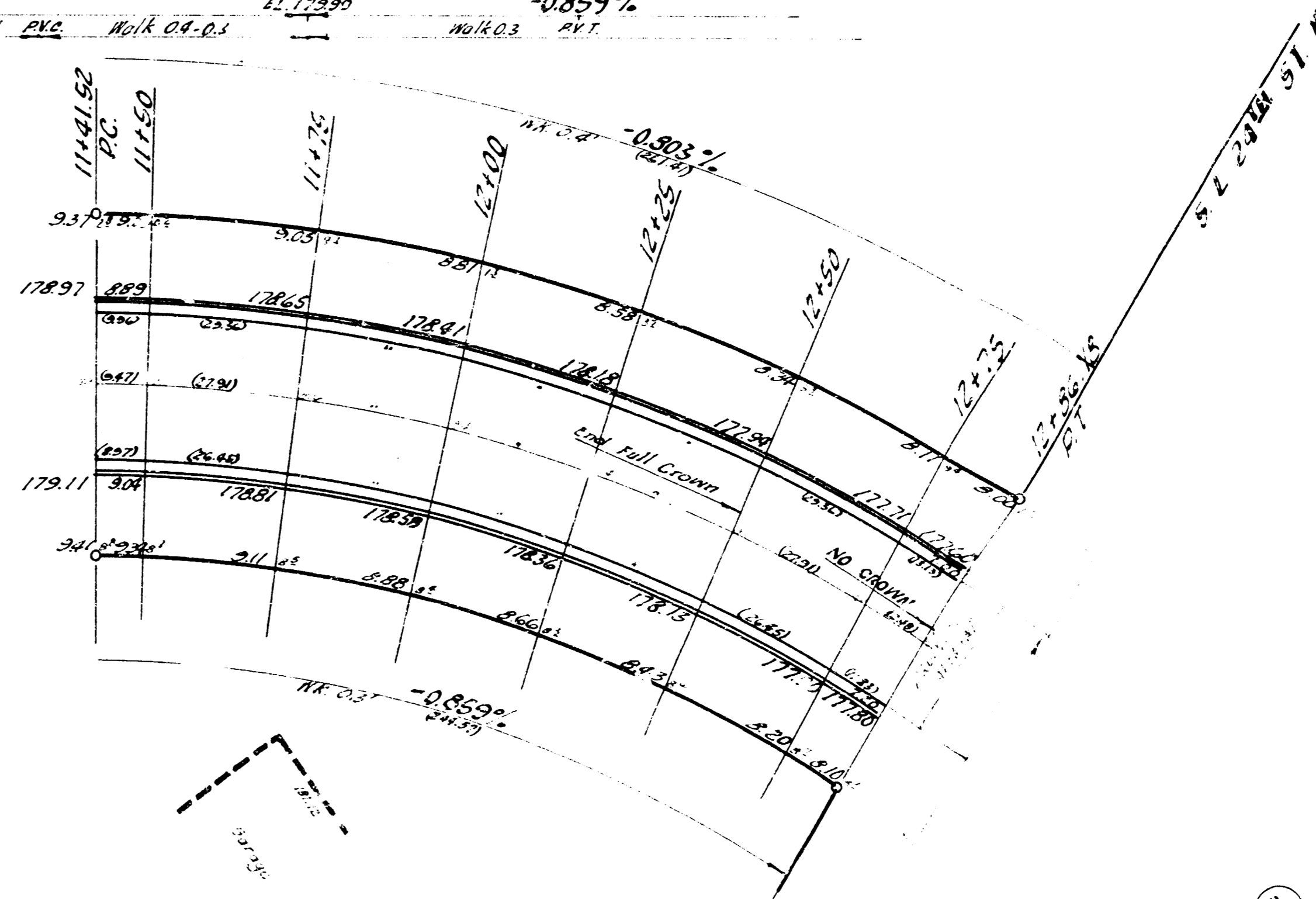
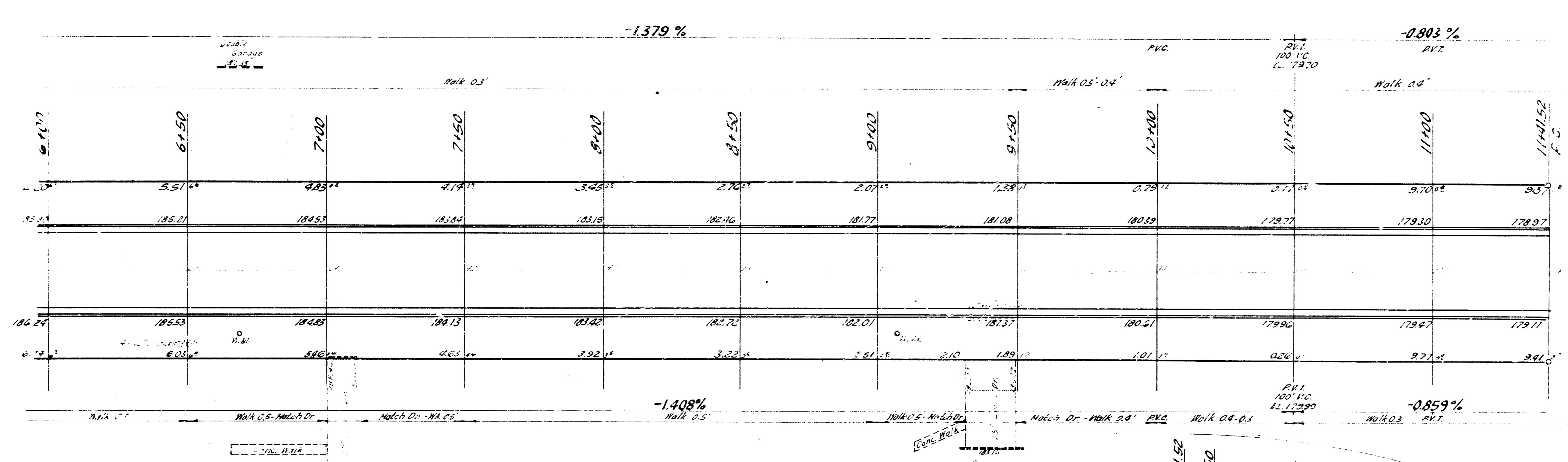
15'-0" = 1" (1/4" = 100')
 1" = 100'

CITY OF WICHITA
 EXCAVATION 145
 1.10%
 TOTAL

1/5



BLUFF AVE.
 SL LOT 1 BLK C REPLAT BLK C 10 1 224' OF
 BLK 8 2ND ADDN TO SHRECK EST - SL 2414
 26'-2"-30' A.C.
 CITY OF WICHITA, KANS.
 B. S. SMITH CITY ENGINEER
 DATE: 10/1/13 PROJ. NO. C18-133



CURVE DATA: $\Delta = 32^{\circ}08'$ $R_{CA} = 25793'$ $\Delta IFT = 66639016'$

STATION	ARC LENGTH	CHORD LENGTH		DEFLECTION	
		B' @ L CE	B' @ R CE	DEFLECTION	TOTAL DEFLECTION
11+15.0	PC				
11+25	8.8'	14.22'	8.71'	0° 52' 37"	0° 52' 37"
11+25	28.00'	30.12'	28.67'	2° 42' 36"	3° 45' 02"
12+00	-	-	-	0° 29' 42"	-
12+25	-	-	-	0° 16' 18"	-
12+50	-	-	-	12° 08' 58"	-
12+75	-	-	-	10° 08' 30"	-
12+90.19	11.19'	13.98'	11.88'	1° 18' 10"	16° 04' 00"