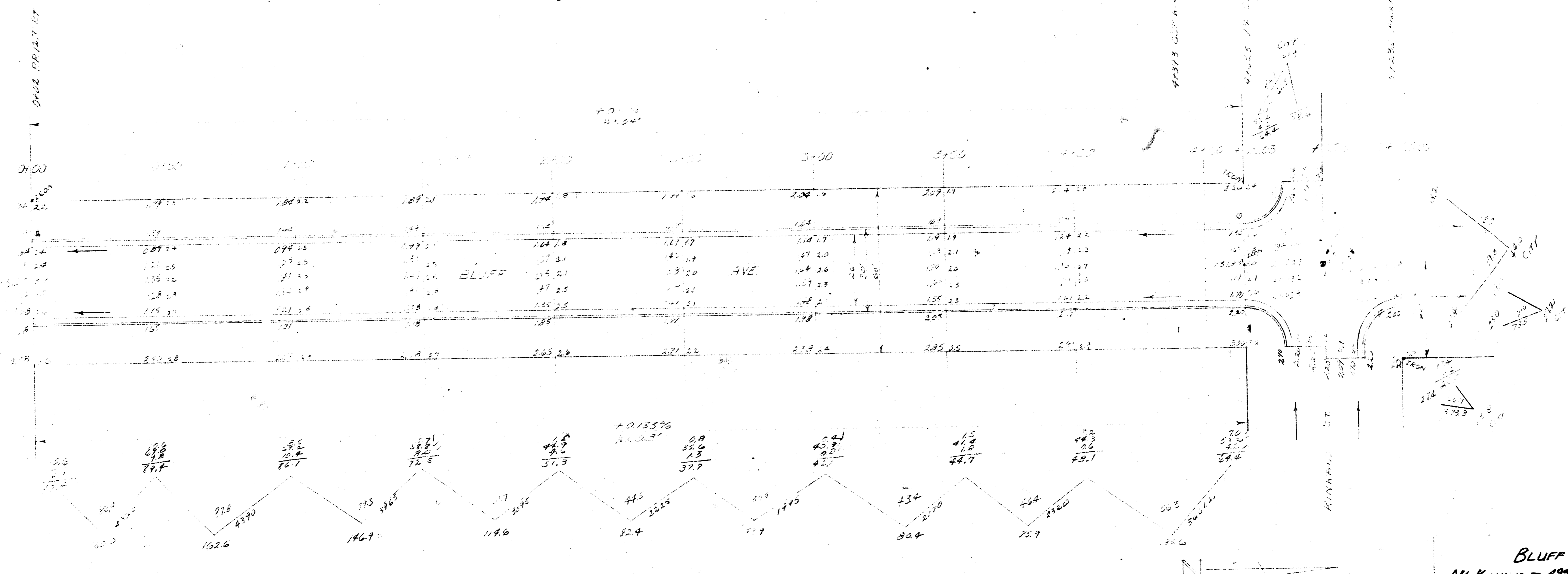


2117 15051 1011 W. 1/2 SEC. 10 T. 12 N. R. 12 W.  
 2117 15775 SW COR CONC. HIGHWAY 1705' \* 4300 E. HIGHWAY

STA ON N 12

Surveyed by B. A. C.  
 Plan 4-6  
 Loc. 4-6  
 Checked C. H. E.



TIES TO IRON & BLUFF S. MINNARD.  
 48' 11" SE TO SW COR CONC. STEP ON CHURCH  
 117' 11" NE TO NE PROP. IRON  
 302' W TO SW PROP. IRON

TIES TO STONE & CLARA E. MINNARD.  
 84' 11" SE TO NW COR. CHURCH FOUNDATION  
 99' 11" NE TO SW COR. CAR FOUNDATION  
 30' S TO IRON & BLUFF S. MINNARD



BLUFF AVE  
 NW CORNER TO 475' S OF E. MINNARD  
 26-2-30 AC  
 CITY OF WICHITA, KANSAS  
 B. E. SMITH CITY ENGINEER  
 MARCH 24, 1933 PROJ. NO. C-13-1