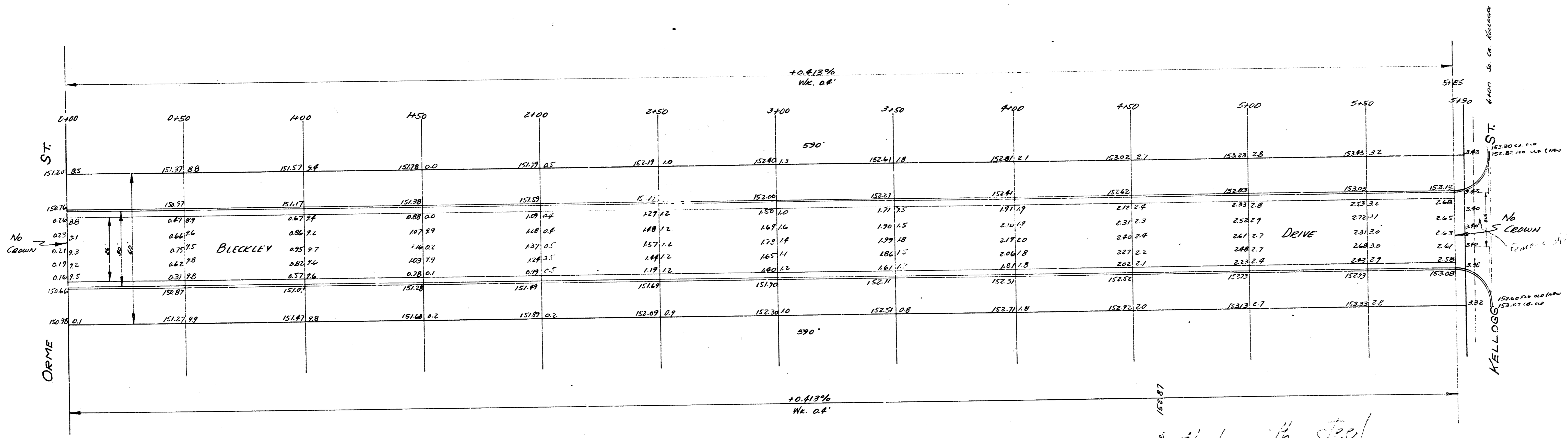


B.M. 157.01 N.W. COR. 1st Step Ho. # 4931 E. ORME

NOTE: REMOVE SIDEWALK, DRIVE & CURB AT
KELLOSS TO BUILD CONC. RETURN WITH
INT. CURB.



Note: Make all drives 6" thick with steel
All excavation to be used to fill
streets in Area.

BLECKLEY DRIVE
S.W. KELLOSS TO N.W. ORME
26'-2"-30'A.C.
CITY OF WICHITA, KANSAS
L. K. WHITE CITY ENGINEER
JUNE 1949 PROJ. NO. C19-718