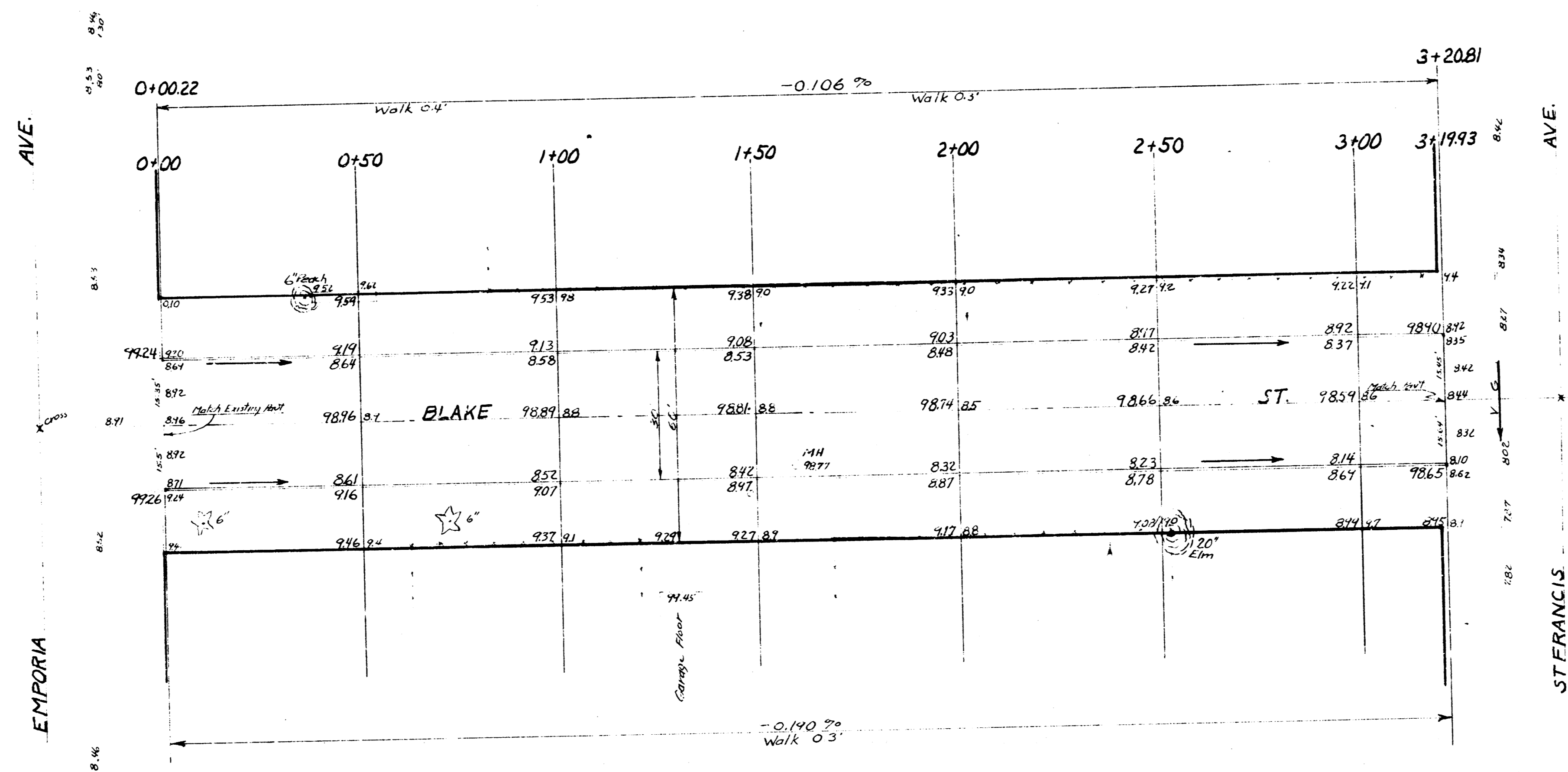
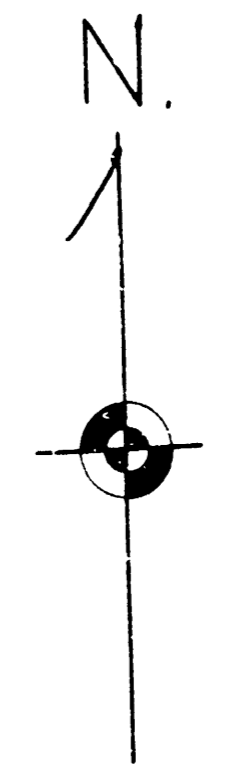


BM. 99.11 STEP BENCH N.S. P. POLE SW. COR. BLAKE & ST. FRANCIS



EXCAVATION
PROPERTY
178.5 cu yds.
110.1 LL2
176.4 cu yds



1/2

BLAKE ST.
EL. EMPORIA TO W.L. ST. FRANCIS
30' CONC. & CB.
CITY OF WICHITA, KANSAS
B. E. SMITH CITY ENGINEER
DATE: 12-22-51 PROJ. C12-51

X-1000
 3/11
 7/11