

CITY OF WICHITA, KANSAS
 MICHAEL E. LINDEBAK, P.E., CITY ENGINEER
STREET IMPROVEMENTS

RECONSTRUCTION OF THE MEDIAN IN BROADWAY FROM A POINT
 200 FEET MORE OR LESS NORTH OF THE SOUTH LINE OF LOT 1, TO
 A POINT 420 FEET MORE OR LESS NORTH OF THE SOUTH LINE LOT 1.

IN

DILLON 11TH ADDITION

CITY OF WICHITA PROJECT NO. 472-76-245-32540-000-000-001
 INDEX NO. 763037

INDEX OF MAPS

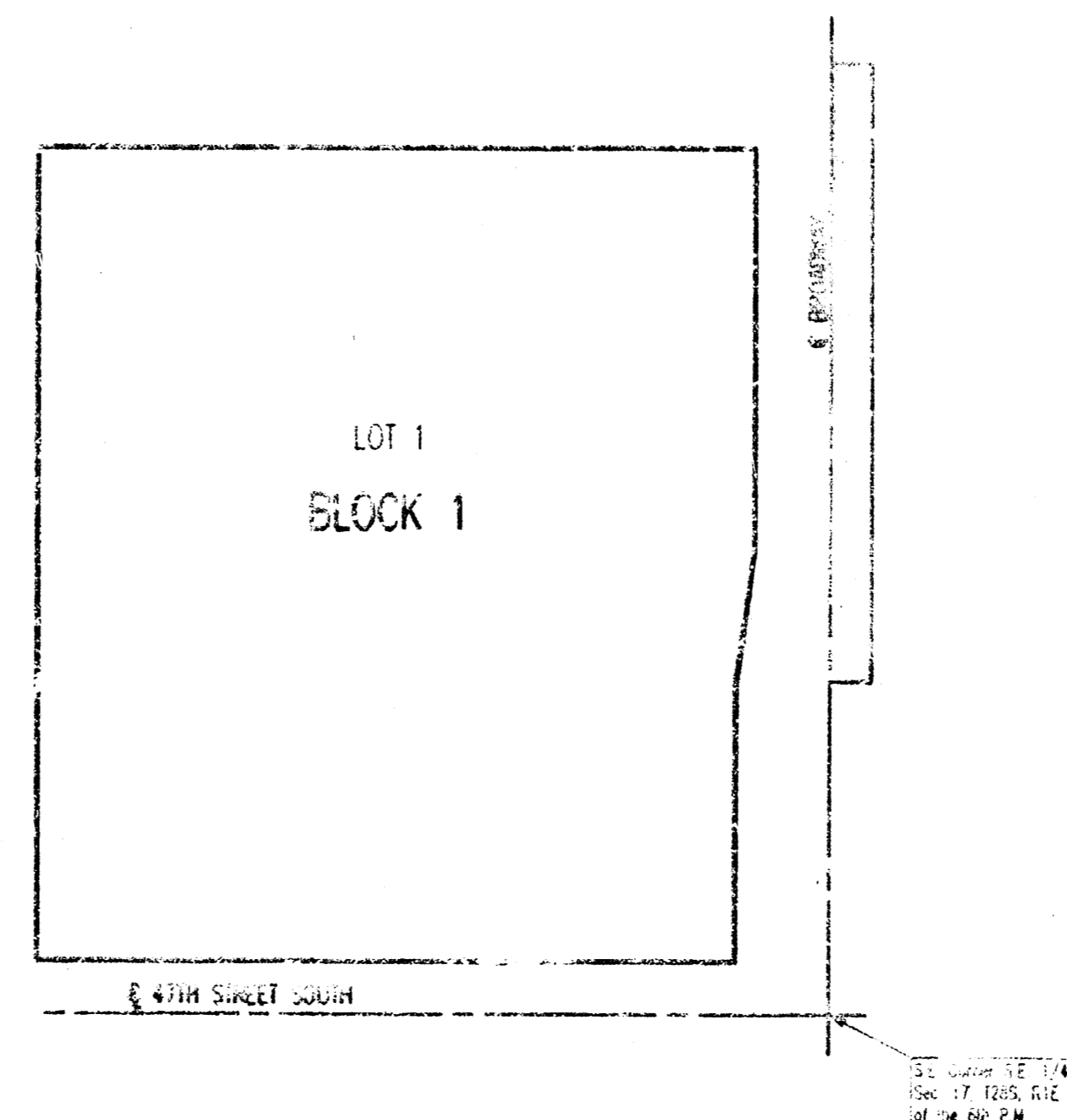
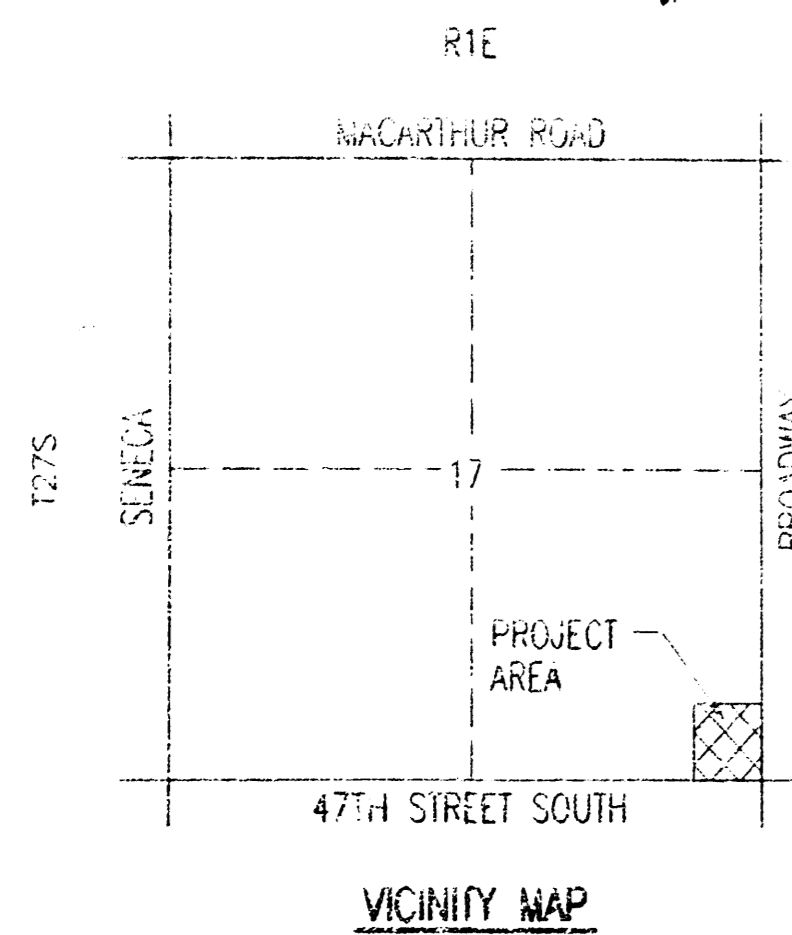
1. TITLE SHEET
2. PLAN AND LEGENDS
3. PROFILE
4. VERTICAL CURVE
5. PAVEMENT LAYOUT AND FINISH PLAN
6. PAVEMENT LAYOUT AND FINISH DETAILS

PROJECT SURVEY CONTROL

- BM - C.O.M. 150 AT N.E. CORNER TENTH SQUARE SIDE AT
 S.W. CORNER BROADWAY AND 47TH STREET SOUTH
 ELEV. 427.14
- BM - RAILROAD SPIKE IN EAST FACE POWER PILE, 4TH POLE
 NORTH OF 47TH STREET SOUTH AND 600 WEST OF
 BROADWAY.
- D.F.V. 68.05

EARTHWORK

PROJECT LENGTH = 411.91 LIN. FT.



GENERAL NOTES

UNDERGROUND UTILITY LOCATIONS ARE SHOWN ON THIS PLAN. THE CONTRACTOR SHALL BE RESPONSIBLE FOR VERIFYING THE LOCATION AND DEPTH OF ALL UTILITIES PRIOR TO CONSTRUCTION. EXISTING UTILITIES AND THEIR LOCATIONS AS SHOWN ON THE PLANS REPRESENT THE BEST INFORMATION OBTAINABLE FOR DESIGN. LOCATION INFORMATION HAS BEEN OBTAINED FROM THE WICHITA CITY COMPANY RECORDS AND IS NOT GUARANTEED. THE CONTRACTOR SHALL BE RESPONSIBLE FOR VERIFYING THE LOCATION AND DEPTH OF ALL UTILITIES PRIOR TO CONSTRUCTION.

TREES AND SHRUBS IN PUBLIC RIGHT-OF-WAY WHICH ARE IN DIRECT CONTACT WITH PROPOSED NEW CONSTRUCTION SHALL BE REMOVED BY THE CONTRACTOR WITH THE ENGINEER'S APPROVAL. TREES AND SHRUBS WHICH ARE NOT IN DIRECT CONTACT WITH PROPOSED NEW CONSTRUCTION SHALL BE SAVED AND PROTECTED FROM DAMAGE.

STUBBLE FROM THE REMOVAL OF MISCELLANEOUS STRUCTURES SHALL BE REMOVED BY THE CONTRACTOR AND APPROVED AS NOTED BELOW.

ALL DISPOSAL SITES MUST BE APPROVED BY THE KANSAS DEPARTMENT OF HEALTH AND ENVIRONMENT. MATERIAL EITHER STOCKPILED OR DISPOSED OF IN A FLOOD PLAIN SHALL REQUIRE A KANSAS STATE BOARD OF AGRICULTURE PERMIT. ANY MATERIAL PLACED IN WATERS OF THE UNITED STATES OR WATERS SUBJECT TO U.S. RULES OF ENGINEERS PERMISSING REGULATIONS, ANY MATERIAL BURNED OR DISPOSED OUTSIDE APPROVED CONSTRUCTION SITES SHALL REQUIRE ADDITIONAL ARCHITECTURAL INVESTIGATIONS UNLESS BURNED IN A PREVIOUSLY APPROVED BURNING LOCATION.

CONTRACTOR SHALL MAINTAIN HANDLES OF SURFACE AND SUBSURFACE CONDITIONS PRIOR TO DRAINAGE.

TEMPORARY SURROUNDING MATERIAL (SPRINK, ASPHALT, ETC.) MAY HAVE BEEN PLACED WITHIN STREET RIGHTS-OF-WAY FOR LOCAL TRAFFIC AND TEMPORARY ACCESS. CONTRACTOR SHALL FIELD VERIFY EXISTING CONDITIONS TO DETERMINE EXISTING DEPTH OF ALL SURROUNDING SURFACES. CONTRACTOR SHALL REPAIR ALL TEMPORARY SURROUNDING IN THE SAME MANNER AS NOTED ABOVE FOR KUTTING. THIS REMAINS SUBJECT TO SUBMITTAL TO TERRACON.

CONTRACTOR SHALL PROVIDE A MINIMUM FURFURIGHT 432 HOUR FLAME RATED EXISTING WEEDS AND SHRUBS PRIOR TO REMOVAL AND CONSTRUCTION TO PROTECT THE SURFACE AND PREVENT EROSION. CONTRACTOR SHALL REQUEST THE FOLLOWING UTILITY COMPANIES TO LOCATE ALL EXISTING LINES WITHIN THE PROJECT AREA: KANSAS GAS, KANSAS ELECTRIC, KANSAS TELEPHONE, MULTIMEDIA CABLEVISION, CITY OF WICHITA WATER MAINS/WATER AND CITY OF WICHITA WATER DEPARTMENT.

THE CONTRACTOR SHALL BE RESPONSIBLE FOR PRESERVING PROPERTY LINES. THE CONTRACTOR WILL BE REQUIRED TO RE-ESTABLISH ANY PROPERTY LINES WHICH ARE DAMAGED OR DESTROYED BY HIS CONSTRUCTION OPERATIONS. SUCH LINES SHALL BE RE-ESTABLISHED BY A LICENSED LAND SURVEYOR IN ACCORDANCE WITH STATE LAWS.

THE WATER DEPARTMENT SHALL FIELD LOCATE WATER VALVES. THE DRAINING CONTRACTOR SHALL FIELD LOCATE WATER VALVES. IT SHALL BE THE CONTRACTOR'S RESPONSIBILITY TO PRESERVE SOUP FIELD LOCATIONS DURING THE CONSTRUCTION PROCESS. WATER VALVES, WATER VALVE BOXES OR FIVE MINUTES DAMAGED DURING CONSTRUCTION SHALL BE REPAIRED BY THE CONTRACTOR AT HIS OWN EXPENSE.

THE CONTRACTOR SHALL PROTECT WATER VALVE BOXES AS DIRECTED BY THE ENGINEER. THIS WORK TO BE SEPARATE FROM OTHER WORK.

THIS PROJECT DOES NOT INCLUDE ANY PROVISIONS FOR CONSTRUCTION OF DRIVEWAYS.

A MINIMUM OF ONE LANE TRAFFIC SHALL BE MAINTAINED ON BROADWAY (SOUTHBOUND AND NORTHBOUND) AT ALL TIMES (INCLUDING CONSTRUCTION FOR LANE LANE UNDER C.O.M. PROJ. NO. 472-76-245-32540-000-001). BROADWAY SHALL BE RESTRICTED TO TWO LANE TRAFFIC (SOUTHBOUND AND NORTHBOUND) FROM DUSK TO DAWN. CONTRACTOR SHALL PROVIDE, ERECT AND MAINTAIN TRAFFIC CONTROL AND SIGNALING DEVICES AS REQUIRED BY THE MANUAL ON UNIFORM TRAFFIC CONTROL DEVICES (MUTCD).

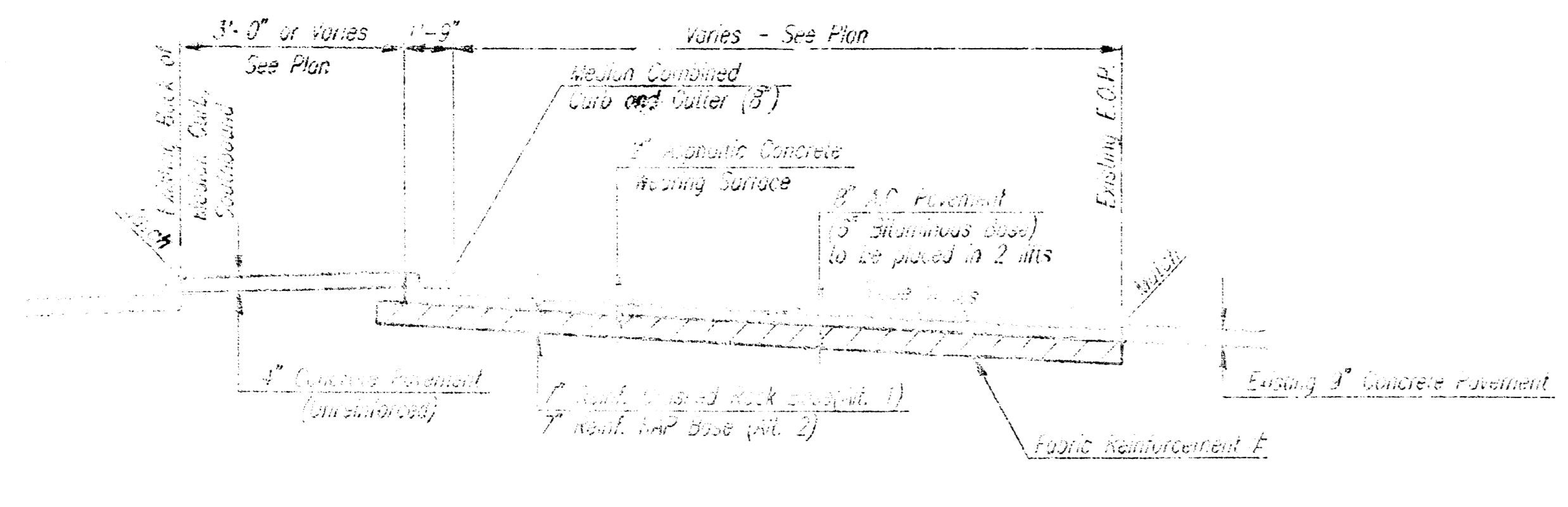
THIS PROJECT INCLUDES ALTERNATE PAVEMENT TYPES. THE CONTRACTOR SHALL BID ALL ALTERNATE 1 AND ALTERNATE 2 BID ITEMS AND THE CITY ENGINEER SHALL THEN SPECIFY WHICH PAVEMENT TYPE IS TO BE USED FOR THIS PROJECT. THE ALTERNATE SELECTED BY THE CITY ENGINEER SHALL BE USED FOR THE ENTIRE PROJECT.



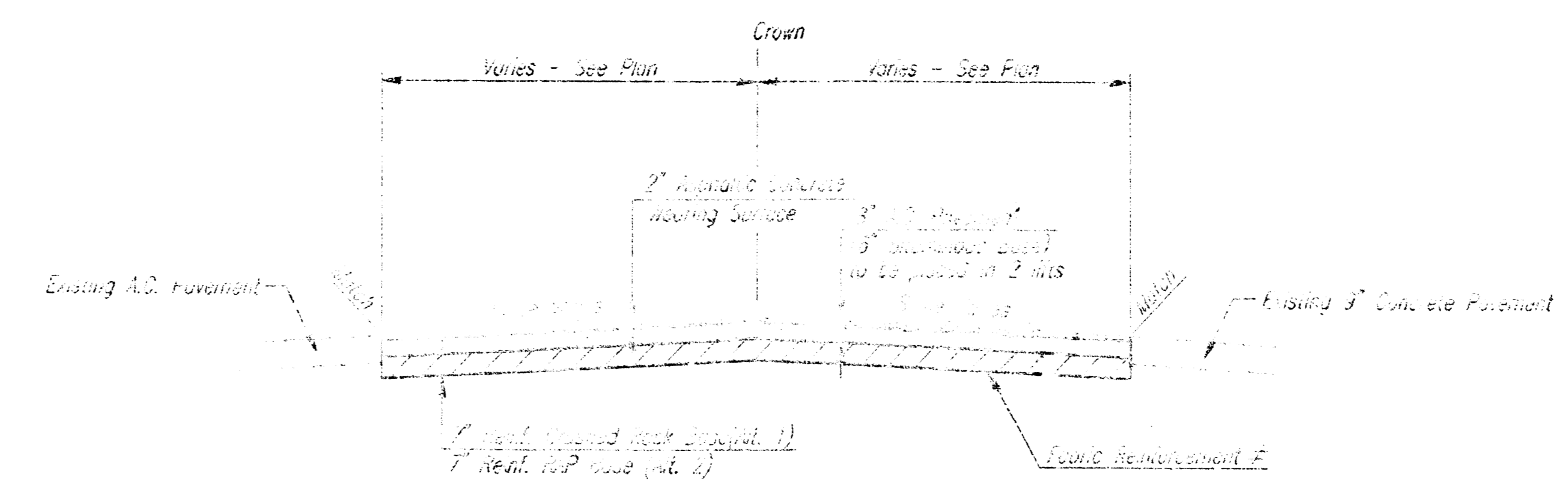
AUGUST, 1995
 PLANS PREPARED BY
PROFESSIONAL ENGINEERING CONSULTANTS, P.A.
 ENGINEERS
 WICHITA, KANSAS

MICHAEL E. LINDEBAK, P.E.
 1000 S. BENTLEY, WICHITA, KS 67202
 812-736-8127
 OFFICE: 812-736-8127
 HOME: 812-736-8127

PROJECT NO.	SHEET NO.	TOTAL SHEETS
472-18-240-024-000-001	3	5



TYPICAL SECTION
 § STA. 12+52.00 TO § STA. 14+05.00
 AND § STA. 14+05.00 TO § STA. 14+00



TYPICAL SECTION
 § STA. 14+05.00 TO § STA. 14+40.00
 AND § STA. 15+00.00 TO § STA. 15+04.25E

IF ANY ROCK REINFORCEMENT IS REQUIRED IN ANY OF THESE APPLICATIONS OR IMPROVED BASE, THE TYPE OF MATERIAL SHALL BE INDICATED IN ACCORDANCE WITH MANUFACTURER'S RECOMMENDATIONS.

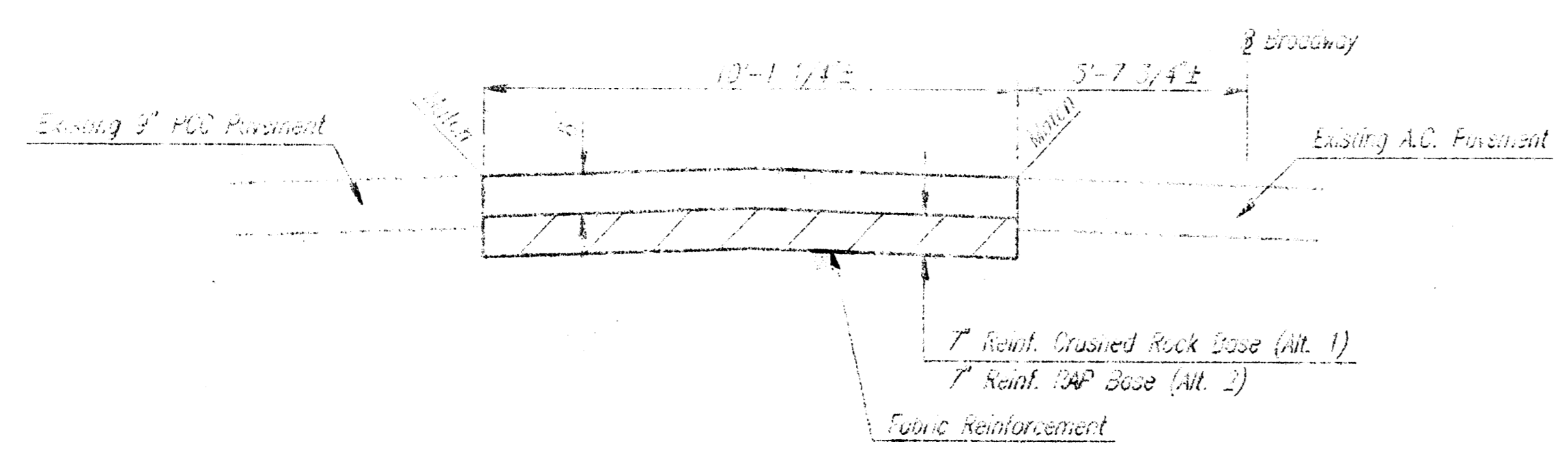
**CRUSHED ROCK
 CONDITION REQUIREMENTS**

PERCENT OF MATERIAL REMOVED	
2 1/2"	3
1 1/2"	10
3/4"	35
3/8"	50

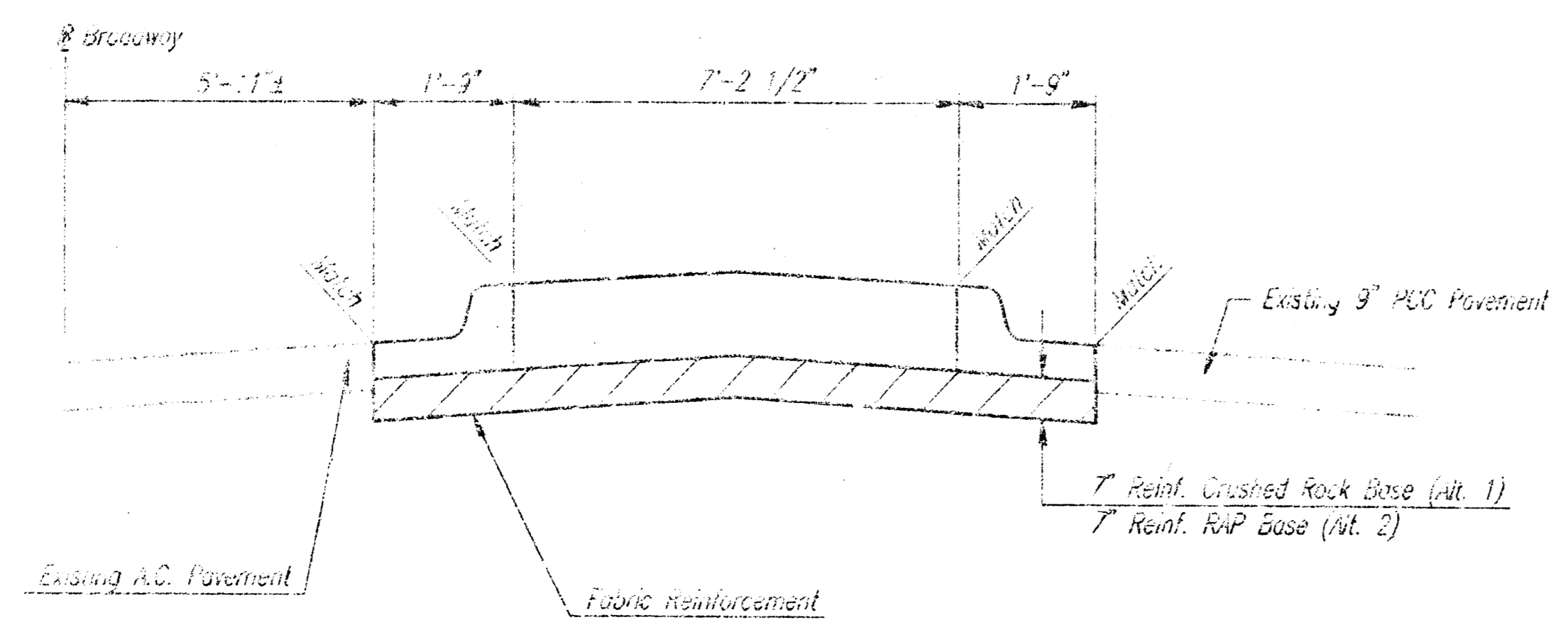
THE PERCENT OF MATERIAL REMOVED SHALL BE DETERMINED BY TESTING TO THE STANDARD METHOD OF TESTS FOR ROAD MATERIALS, T-99, AND SHALL BE REPORTED TO THE FIELD OFFICE BY THE CONTRACTOR.

GENERAL NOTES

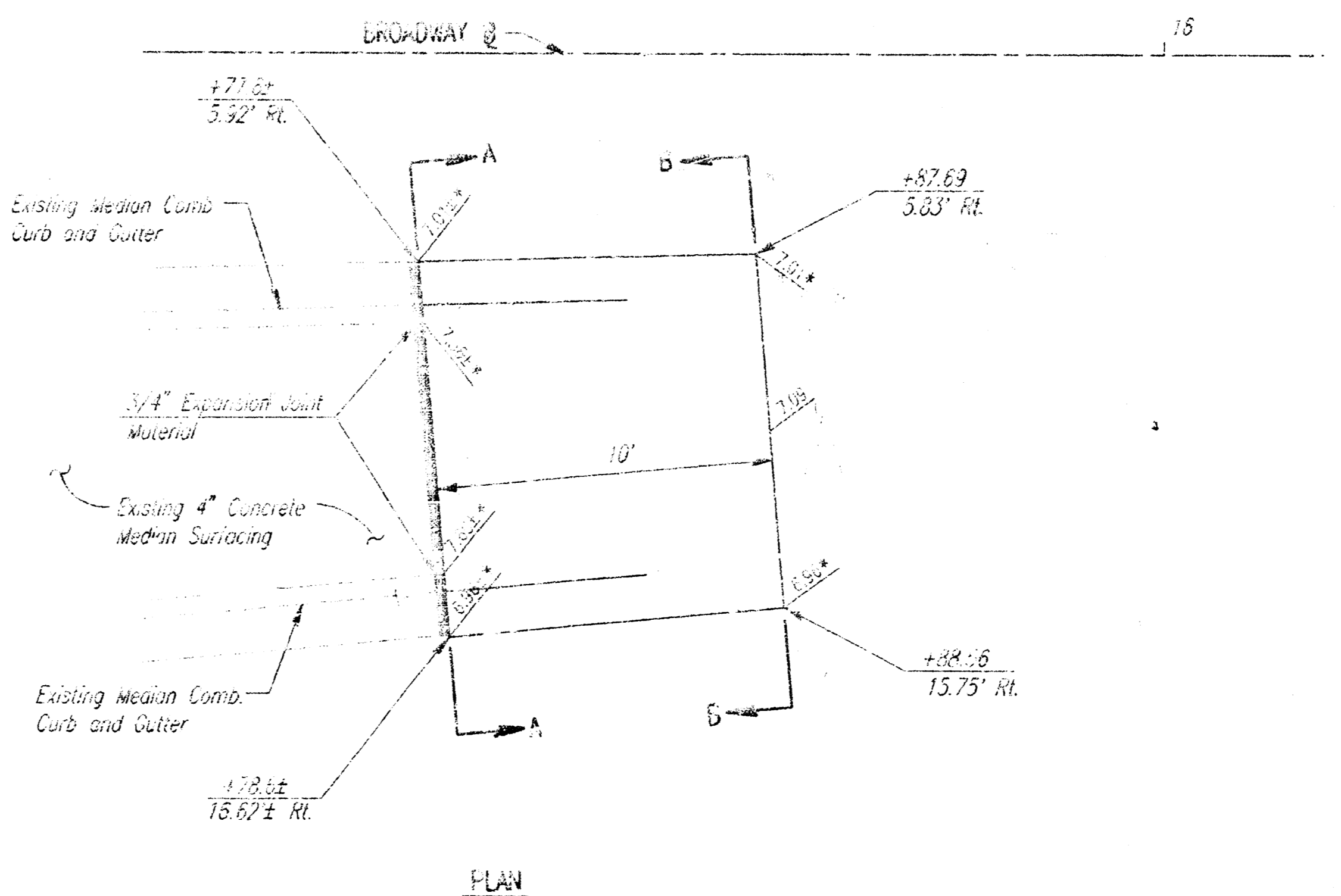
- 1. ALL PAVING SHALL BE COMPLETED WITHIN THE SPECIFIED TIME FRAME TO PREVENT OF ADVERSE WEATHER CONDITIONS. ALL WORK SHALL BE PROTECTED FROM WEATHER DAMAGE.
- 2. ALL PAVING SHALL BE DONE IN ACCORDANCE WITH THE LATEST EDITION OF THE STANDARD SPECIFICATIONS FOR HIGHWAY CONSTRUCTION, 1988 EDITION, AS AMENDED.
- 3. ALL PAVING SHALL BE DONE IN ACCORDANCE WITH THE LATEST EDITION OF THE STANDARD SPECIFICATIONS FOR HIGHWAY CONSTRUCTION, 1988 EDITION, AS AMENDED.
- 4. ALL PAVING SHALL BE DONE IN ACCORDANCE WITH THE LATEST EDITION OF THE STANDARD SPECIFICATIONS FOR HIGHWAY CONSTRUCTION, 1988 EDITION, AS AMENDED.
- 5. ALL PAVING SHALL BE DONE IN ACCORDANCE WITH THE LATEST EDITION OF THE STANDARD SPECIFICATIONS FOR HIGHWAY CONSTRUCTION, 1988 EDITION, AS AMENDED.



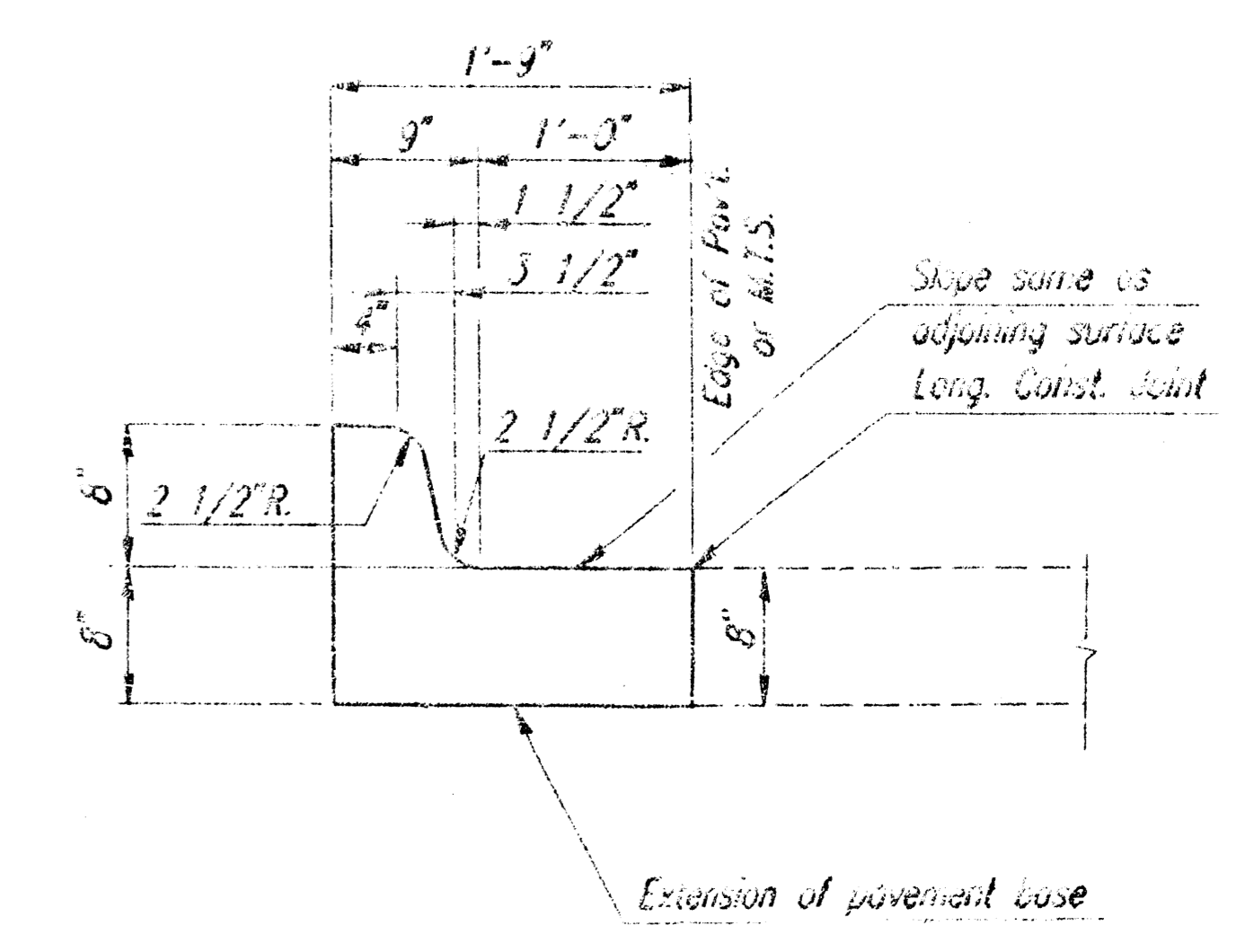
SECTION B-B



SECTION A-A



PLAN



MEDIAN COMBINED CURB & GUTTER
 (8")

MEDIAN NOSE DETAILS

NOTE: MEDIAN NOSE SHALL BE PAID FOR AS 8" CONCRETE PAVEMENT (UNREINFORCED). SPECIAL SHAPING AND ADDITIONAL CONCRETE REQUIRED TO TRANSITION FROM SECTION A-A TO SECTION B-B SHALL BE CONSIDERED INCIDENTAL TO 8" CONCRETE PAVEMENT (UNREINFORCED). ENTIRE NOSE SHALL BE MONOLITHIC.

USE THIS DRAWING FOR THE PURPOSES OF THE PROJECT ONLY. IT IS NOT TO BE USED FOR ANY OTHER PURPOSES. THE USER ASSUMES ALL LIABILITY FOR THE USE OF THIS DRAWING.

HIGHWAY MEDIAN REVISIONS

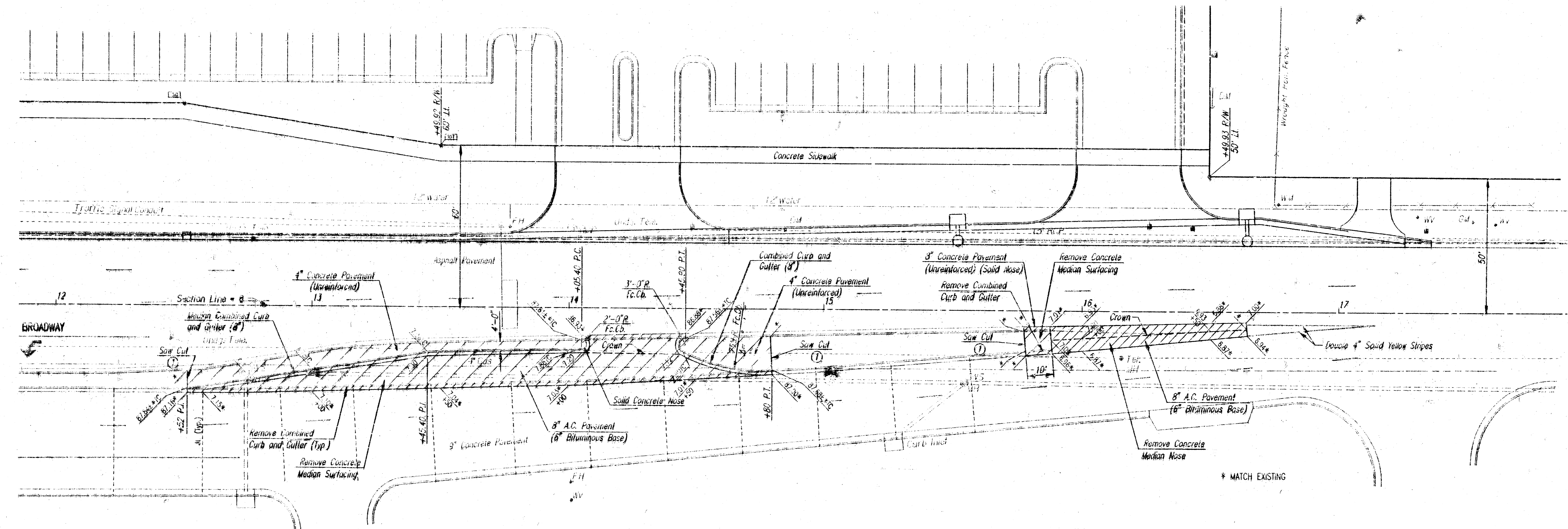
PAVING DETAILS

PROFESSIONAL ENGINEERING CONSULTANTS, P.A.
 ENGINEERS
 WICHITA, KANSAS

Designed by	BER/GOO	Checked by	
Drawn by	LEP	Date	JUNE, 1995
		Job No.	95533

PROJECT NO. 472-76-245-82540-000-000-001	SHEET NO. 4	TOTAL SHEETS 6
---	----------------	-------------------

SCALE: 1" = 20'



① Saw Cut 4" Concrete Median Surfacing and Median Combined Curb and Gutter (8'). This work to be subsidiary to "Median Combined Curb and Gutter (8)".

BROADWAY MEDIAN REVISIONS

MEDIAN PAVING PLAN

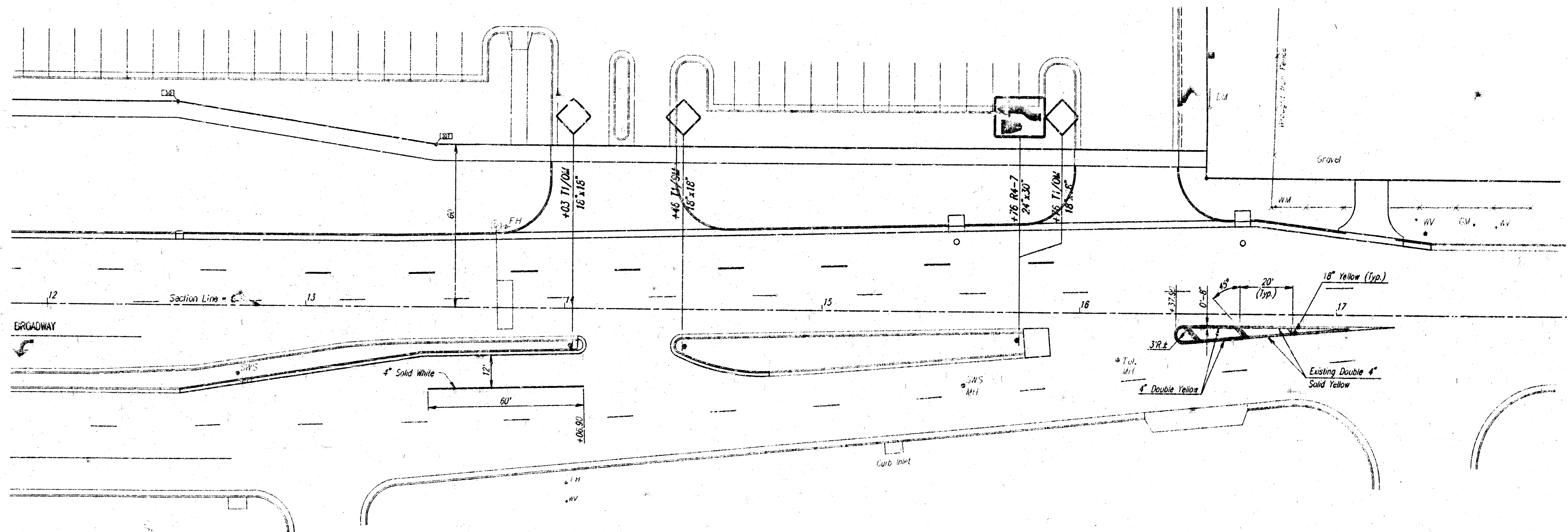
PROFESSIONAL ENGINEERING CONSULTANTS, P.A.
ENGINEERS
WICHITA, KANSAS

Designed by BER, GDD	Checked by
Drawn by DEP	Date JUNE, 1995
Job No. 95333	

usr/ustn/dgr/1995/95333/0000000000
 date plotted: 5/28/95
 deliver to: dwalsh@dmn

PROJECT NO.	SHEET NO.	TOTAL SHEETS
472-76-245-825-00-000-001	5	6

SCALE: 1" = 20'



MARKING AND SIGNING NOTES

1. ALL MARKING DIMENSIONS ARE TO CENTER OF STRIPE UNLESS NOTED OTHERWISE.
2. ALL MARKINGS AND SIGNS SHALL CONFORM TO THE LATEST EDITION OF THE MANUAL ON UNIFORM TRAFFIC CONTROL DEVICES (MUTCD) WITH REGARD TO COLOR, SIZE AND SHAPE, PLACEMENT AND INSTALLATION.
3. ALL MARKINGS AND SIGNS SHALL BE FULLY REFLECTORIZED.
4. SEE SHEET NO. 6 FOR MARKING AND SIGNING DETAILS.

user: wsh/dcp/1995/95333/meekmark.dgn
 file: plans/6/25/95
 driver: to: chris: dlm

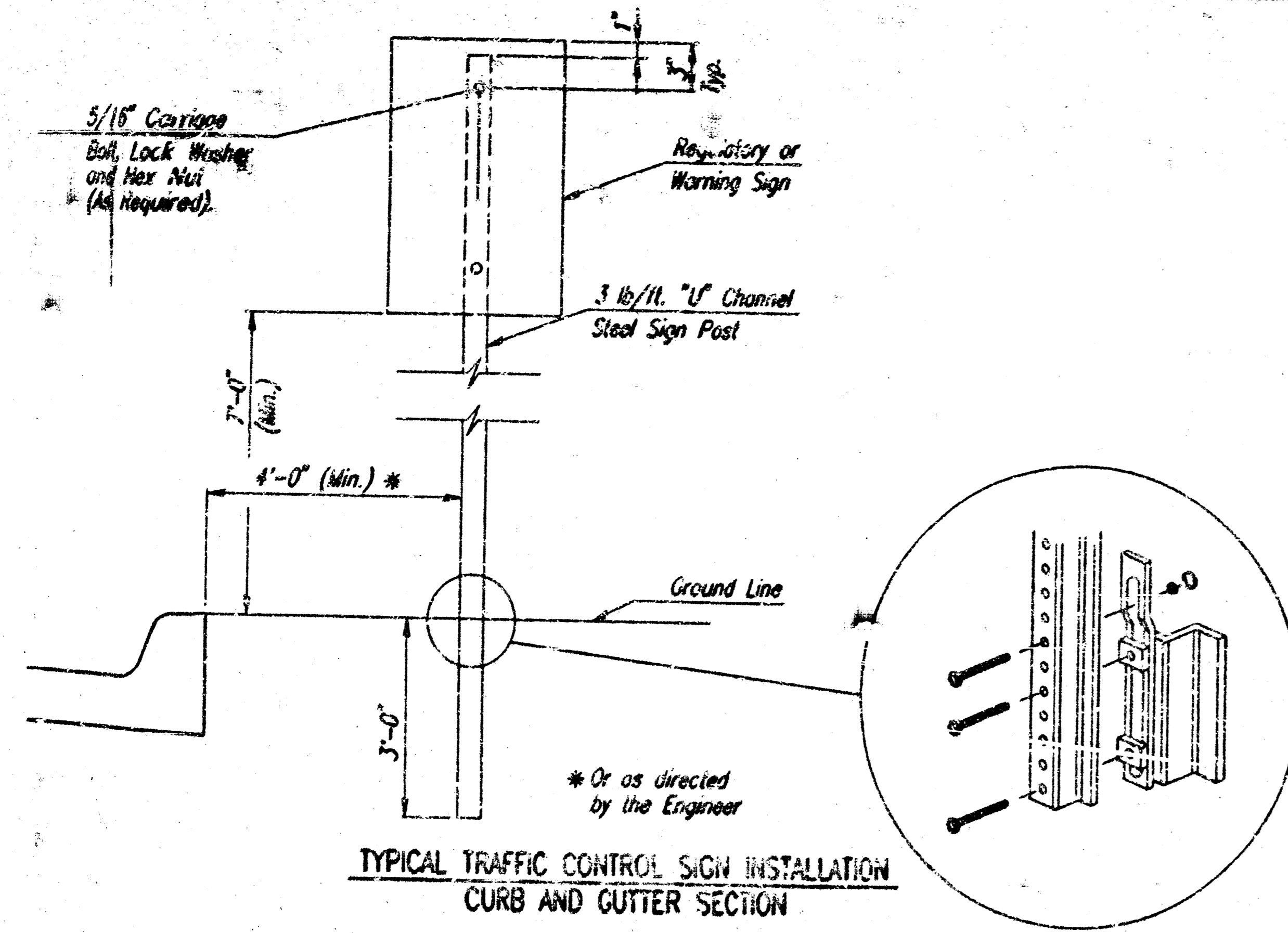
BROADWAY MEDIAN REVISIONS

PAVEMENT MARKING AND SIGNING PLAN

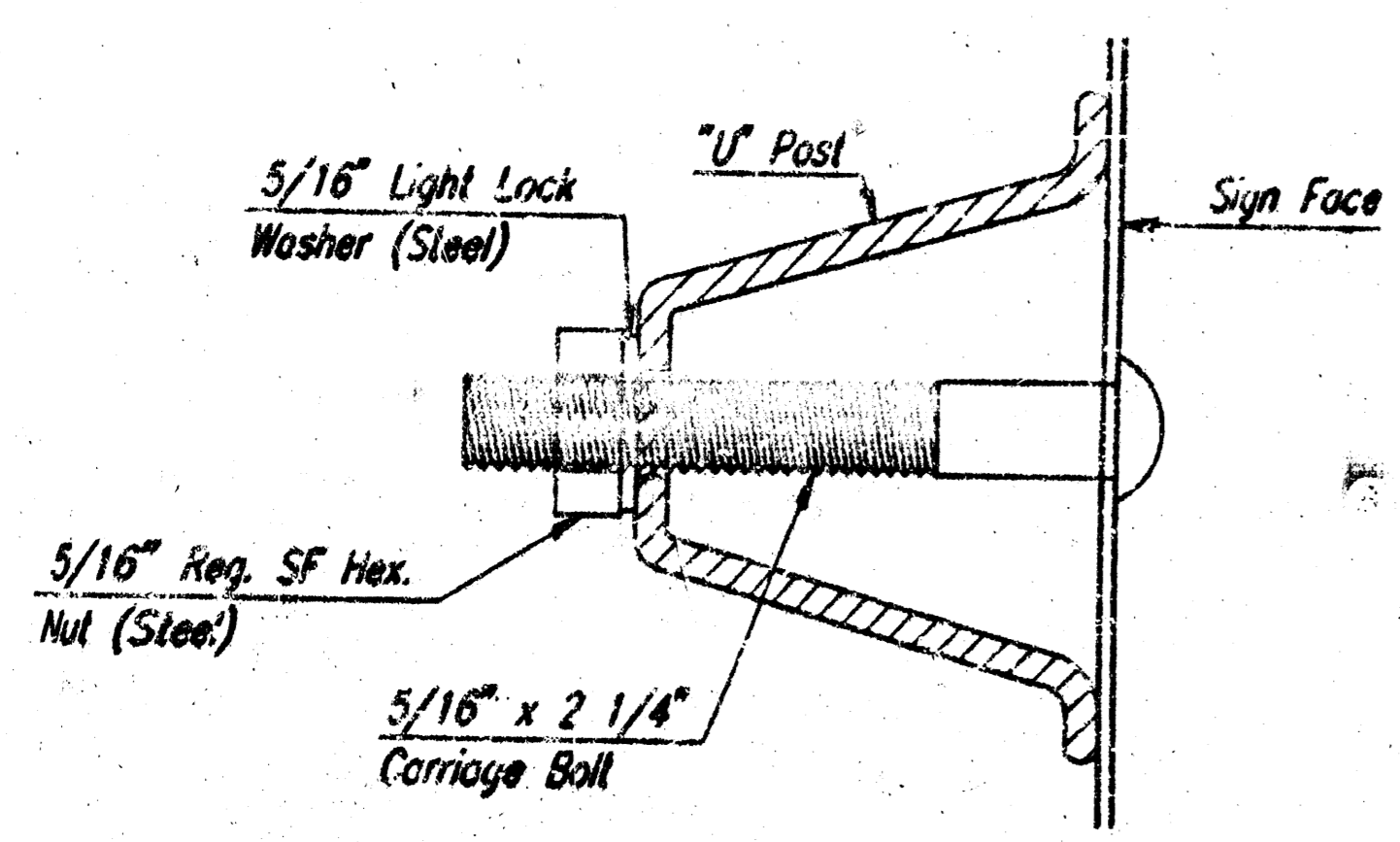
PROFESSIONAL ENGINEERING CONSULTANTS, P.A.
ENGINEERS
 WICHITA, KANSAS

Designed by	BER, GOD	Checked by	
Drawn by	DEP	Date	JUN 1995
		Job no.	95333

PROJECT NO.	SHEET NO.	TOTAL SHEETS
477-76-245-82539-000-001	6	6



TYPICAL TRAFFIC CONTROL SIGN INSTALLATION CURB AND GUTTER SECTION



TRAFFIC CONTROL SIGN MOUNTING DETAIL

GENERAL NOTES - SIGNING

- NOTE: REFERENCES BELOW TO "STANDARD SPECIFICATIONS" DENOTE "STANDARD SPECIFICATION FOR STATE ROAD AND BRIDGE CONSTRUCTION, EDITION 1997" BY THE KANSAS DEPARTMENT OF TRANSPORTATION.
- POST ANCHORS: POSTS SHALL BE ANCHORED WITH A TYPING BASE POST SUPPORT AS DETAILED.
 - POSTS FOR TRAFFIC CONTROL SIGNS: POSTS SHALL CONFORM TO THE REQUIREMENTS OF SUBSECTION 1500 OF THE STANDARD SPECIFICATIONS EXCEPT THAT ALL POSTS SHALL WEIGH 3 LBS./FOOT MINIMUM.
 - SIGN BLANKS FOR TRAFFIC CONTROL SIGNS: SIGN BLANKS SHALL BE FABRICATED FROM 0.080" ALUMINUM ALLOY SUBSTRATE CONFORMING TO THE REQUIREMENTS OF SUBSECTION 1626 OF THE STANDARD SPECIFICATIONS.
 - FASTENERS: ALL STEEL FASTENERS FOR TRAFFIC CONTROL SIGNS SHALL BE GALVANIZED AND SHALL CONFORM TO THE REQUIREMENTS OF SUBSECTION 1514 OF THE STANDARD SPECIFICATIONS.
 - REFLECTIVE SHEETING: REFLECTIVE SHEETING SHALL BE TYPE A - HIGH PERFORMANCE CLASS IIA IN ACCORDANCE WITH SUBSECTION 2201 OF THE STANDARD SPECIFICATIONS.
 - PROJECTS INV.: ALL PROJECTS INV. SHALL CONFORM TO THE REQUIREMENTS OF SUBSECTION 2202 OF THE STANDARD SPECIFICATIONS.
 - DETAILS: REGULATORY AND WARNING SIGNS SHALL CONFORM TO THE DETAILS IN "STANDARD HIGHWAY SIGNS", PART 1979.
 - TRAFFIC CONTROL SIGNS: TRAFFIC CONTROL SIGNS SHALL BE PAID FOR UNDER LUMP SUM BID FOR "PAVEMENT MARKING AND SIGNING". THE PAYMENT AS SET FORTH ABOVE SHALL BE CONSIDERED FULL COMPENSATION FOR EXAMINATION, BACKSUPPORT, POSTS, ANCHORS, FASTENERS, MATERIALS, LABOR, TOOLS AND INCIDENTALS NECESSARY TO COMPLETE THIS WORK.

R6-1R (36"x12')	R6-1L (36"x12')	R3-7R (30"x30')	OM-3R (12"x36')
W1-1L (30"x30')	W1-1R (30"x30')	R1-1 (30"x30')	W4-2 (36"x36')
R4-7 (24"x30')	W14-2 (30"x30')	R1-2 (36"x36"x36')	R3-9b (24"x36')
END OF ROAD MARKER EOR (18"x18") (RED)	TYPE 1 OBJECT MARKER T1/OM (18"x18") (YELLOW)	W3-3 (36"x36')	

STREET	STATION	OFFSET	SIGN	QUANTITY #
BROADWAY	14+03	13' RT.	T1/OM	1
BROADWAY	14+46	13.5' RT.	T1/OM	1
BROADWAY	15+76	10' RT.	W4-2 & T1/OM	1
TOTAL				3

PROJ. NO. 477-76-245-82539-000-000-001	
COLD PLASTIC PAVEMENT MARKING (4" WHITE)	60 L.F.
COLD PLASTIC PAVEMENT MARKING (4" YELLOW)	113 L.F.
COLD PLASTIC PAVEMENT MARKING (18" YELLOW)	14 L.F.

* FOR INFORMATION ONLY. TO BE PAID FOR UNDER THE BID ITEM "PAVEMENT MARKING AND SIGNING - LUMP SUM".

BROADWAY MEDIAN REVISIONS

PAVEMENT MARKING AND SIGNING DETAILS

PROFESSIONAL ENGINEERING CONSULTANTS, P.A.
ENGINEERS
WICHITA, KANSAS

Designed by BER, GDD Checked by _____
Drawn by DEP Date JUNE, 1995 Job No. 56333

457/usm/lym: 1995, 95333, medsign.dwg
 date plotted: 6/28/95
 drawn by: daniel davis