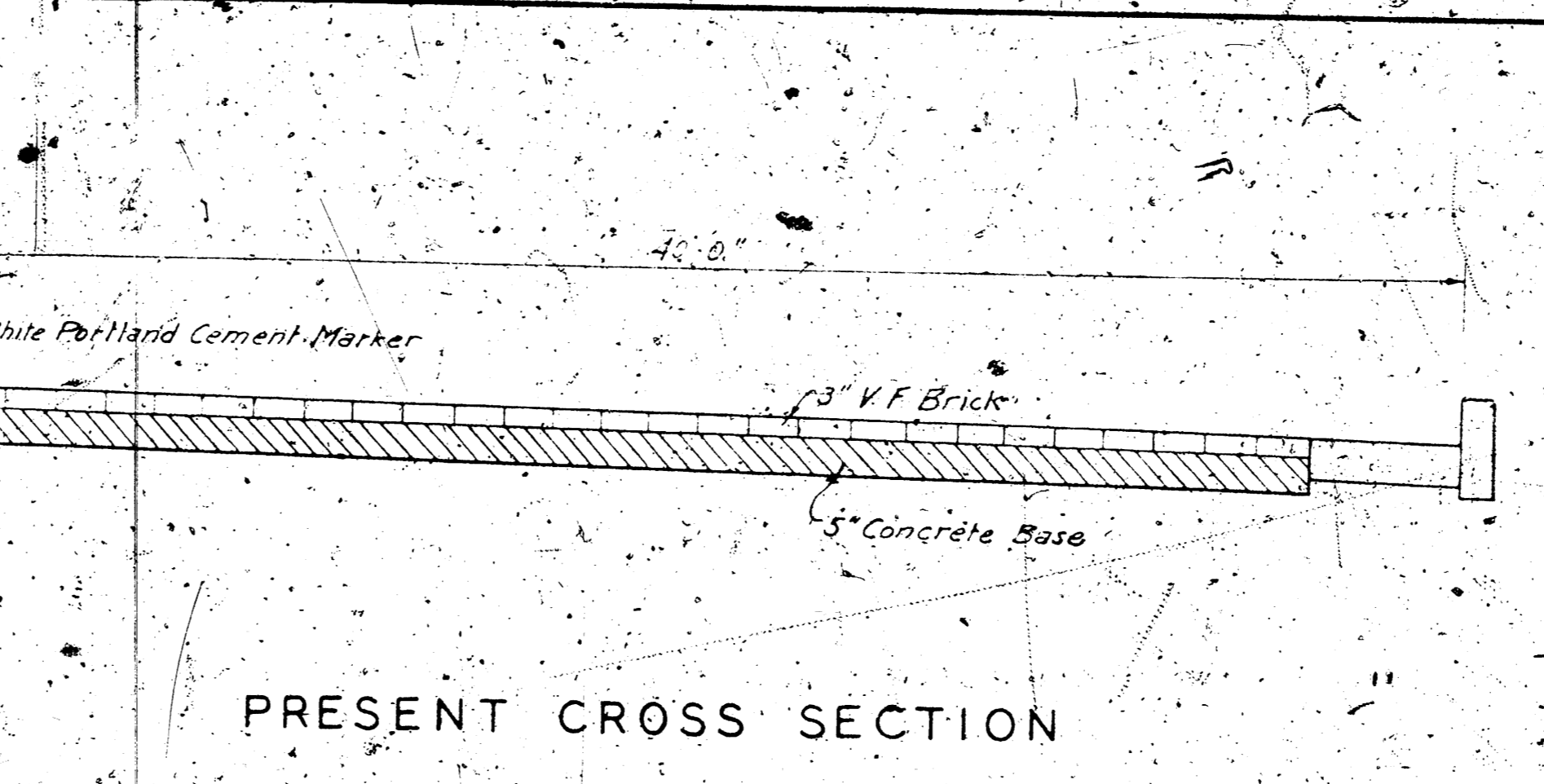
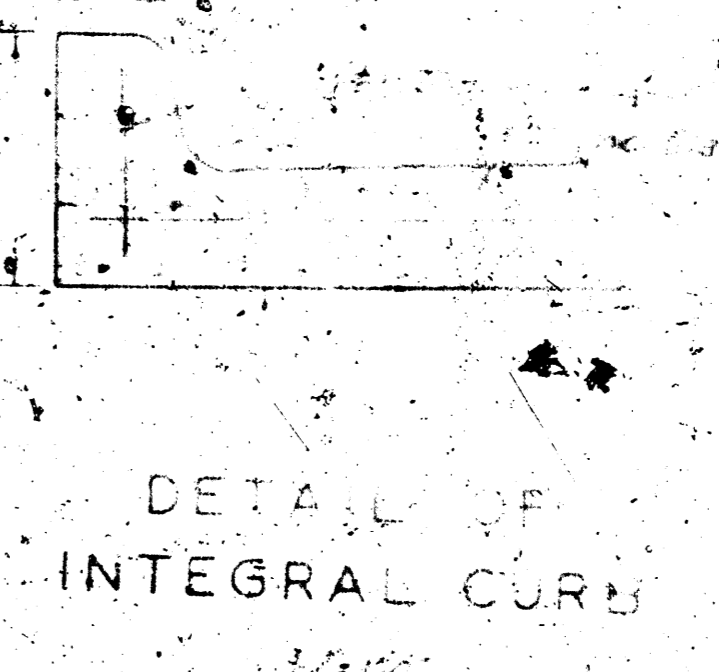


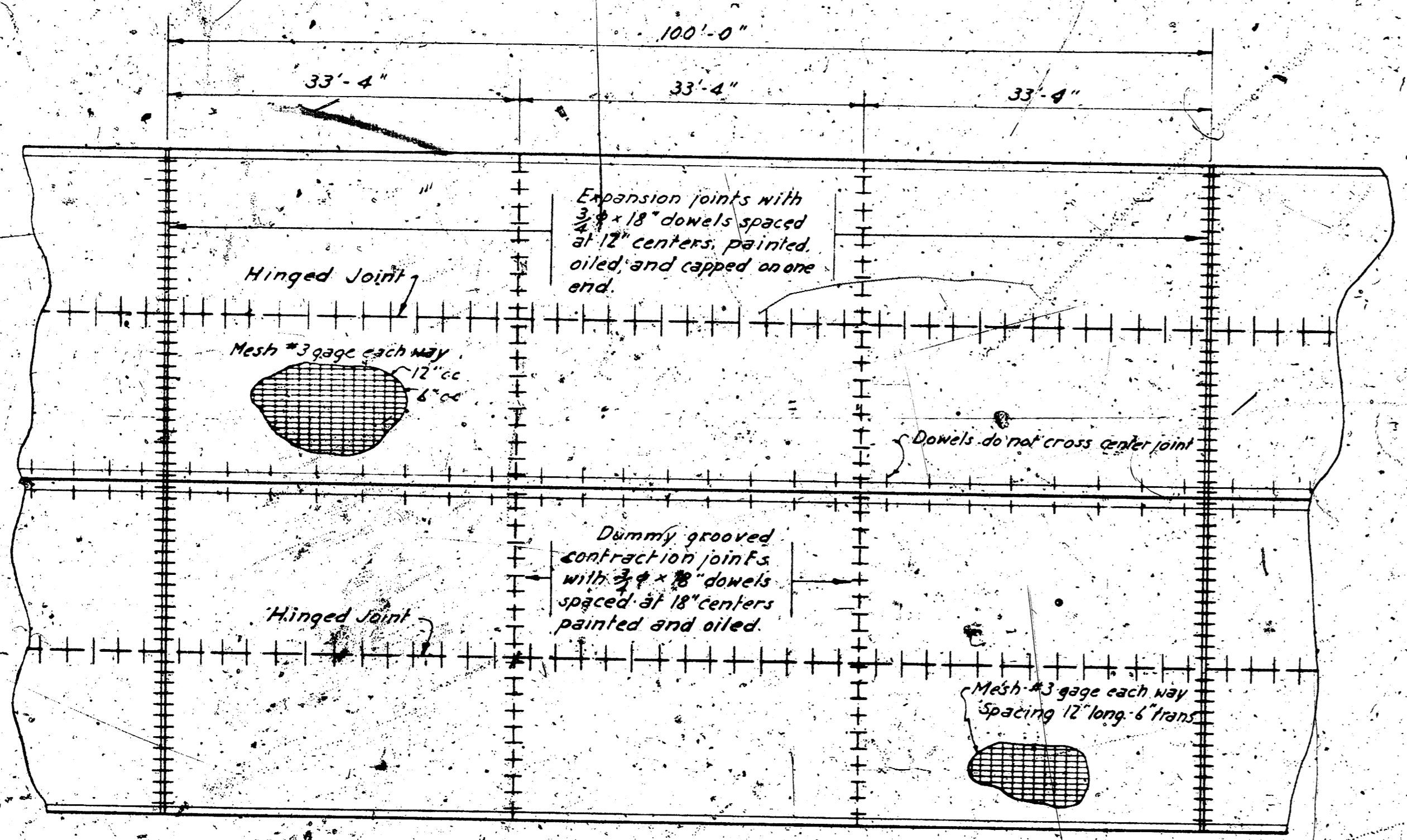
PROPOSED CROSS SECTION



PRESENT CROSS SECTION

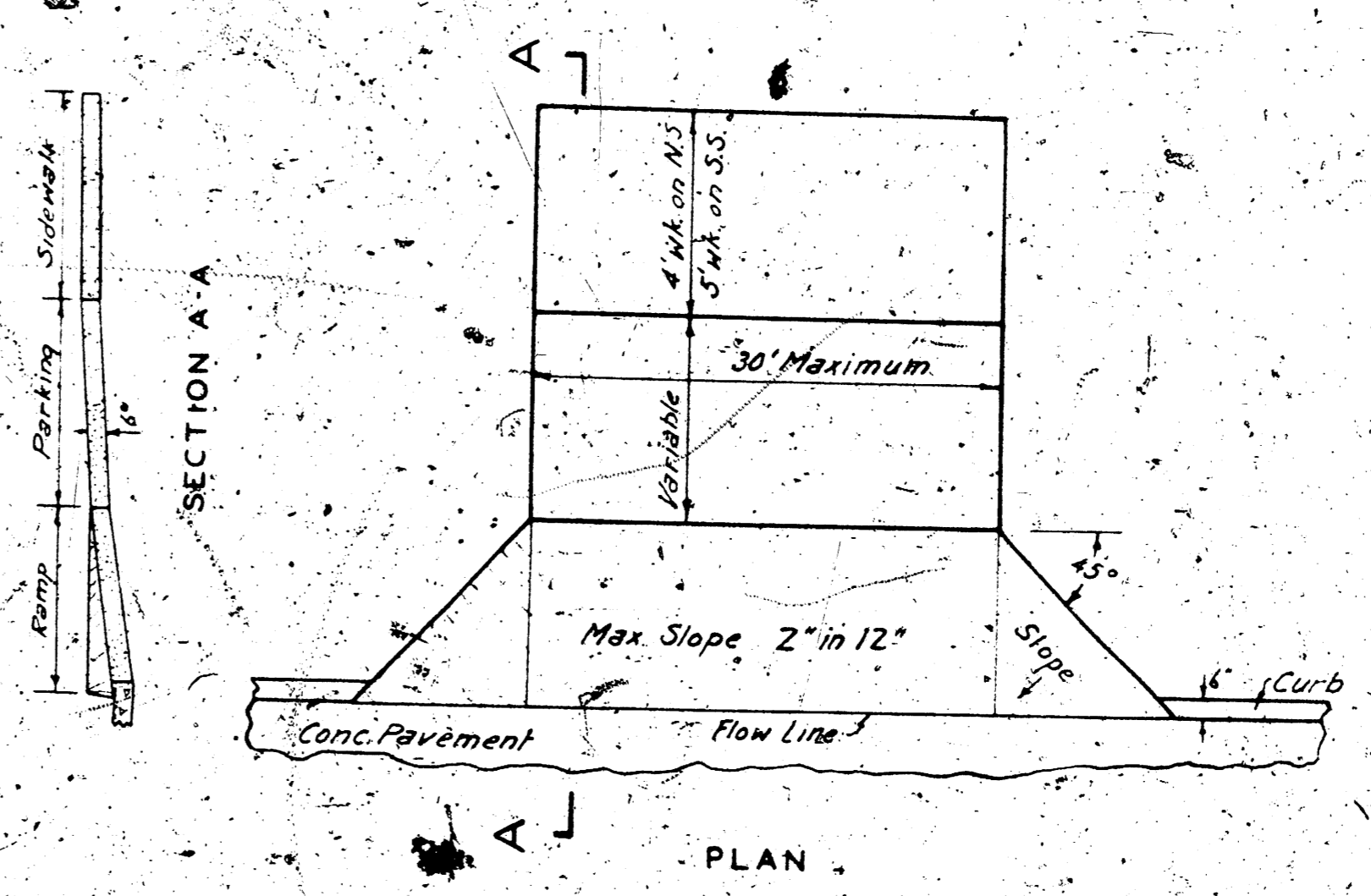


DETAIL OF INTEGRAL CURB

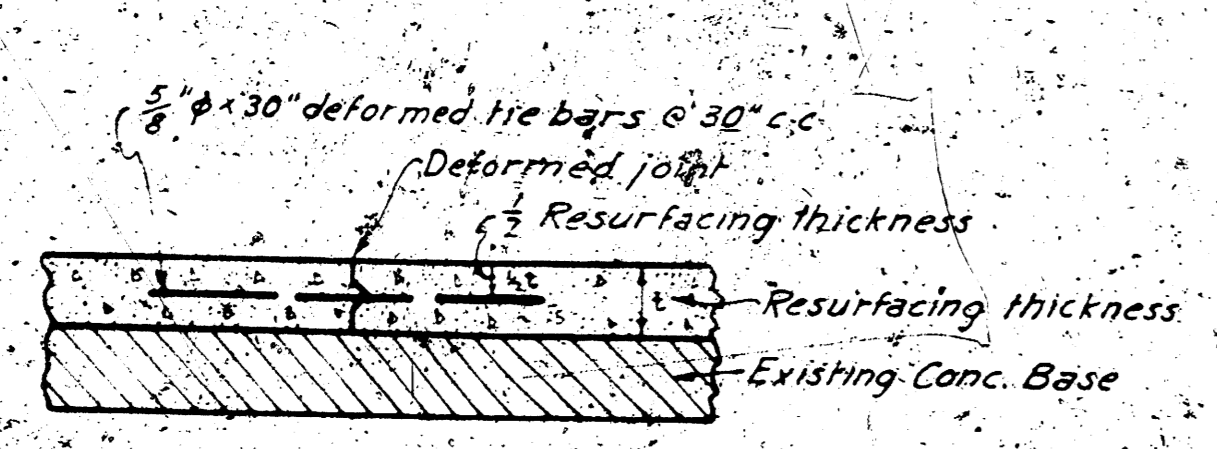


PLAN LAYOUT

PLANS FOR REPAVING
CENTRAL AVENUE
ST. FRANCIS AVE - SANTA FE AVE.

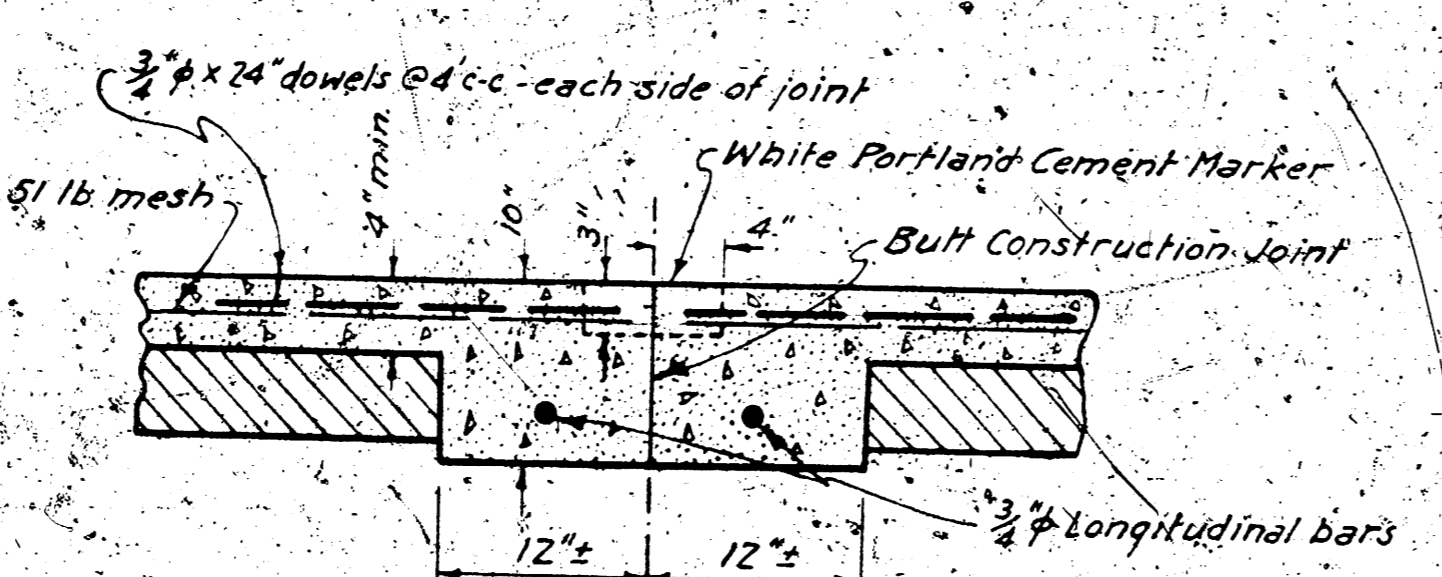


ELEVATION
COMMERCIAL DRIVEWAY



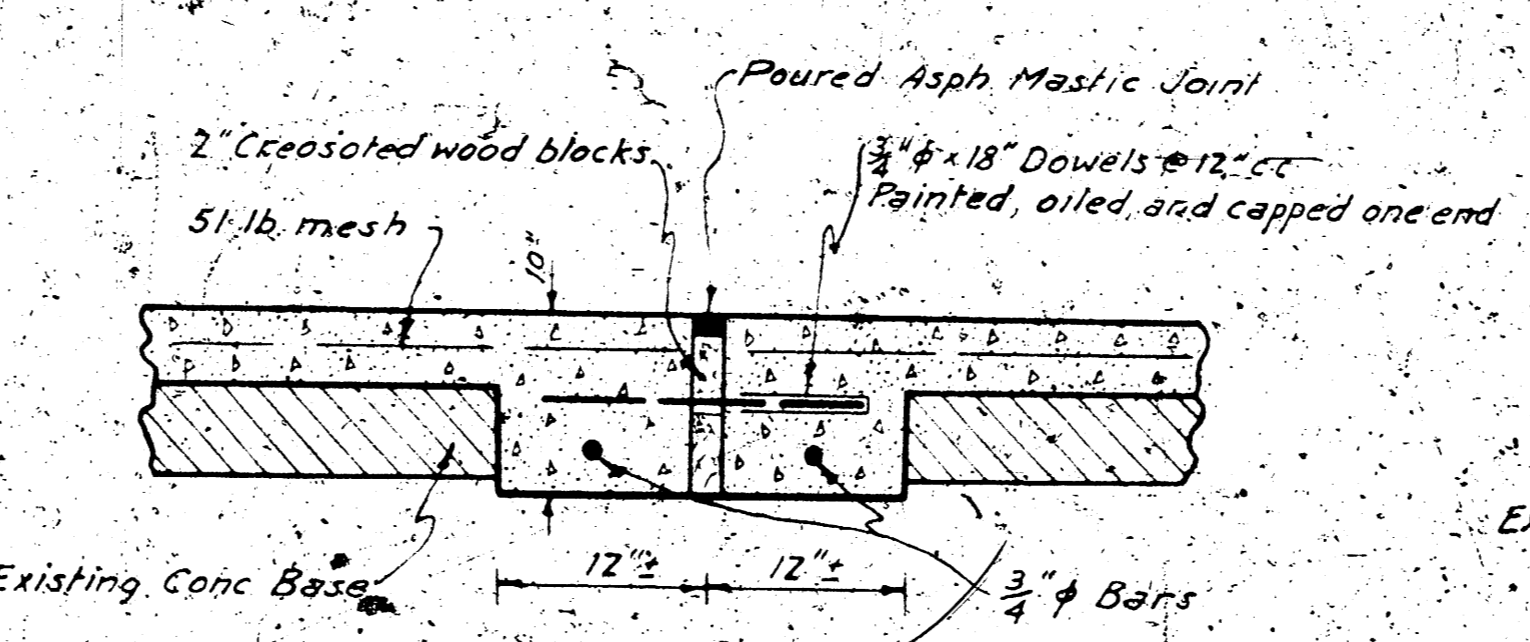
DETAIL OF HINGED JOINT

During construction of the first lane the tie bars shall be bent 90° one end being laid in the groove of the deformed metal plate and the other end extending into the concrete of the first lane. After removal of forms these bars shall be straightened so that they will extend into the concrete of the next lane when it is placed.

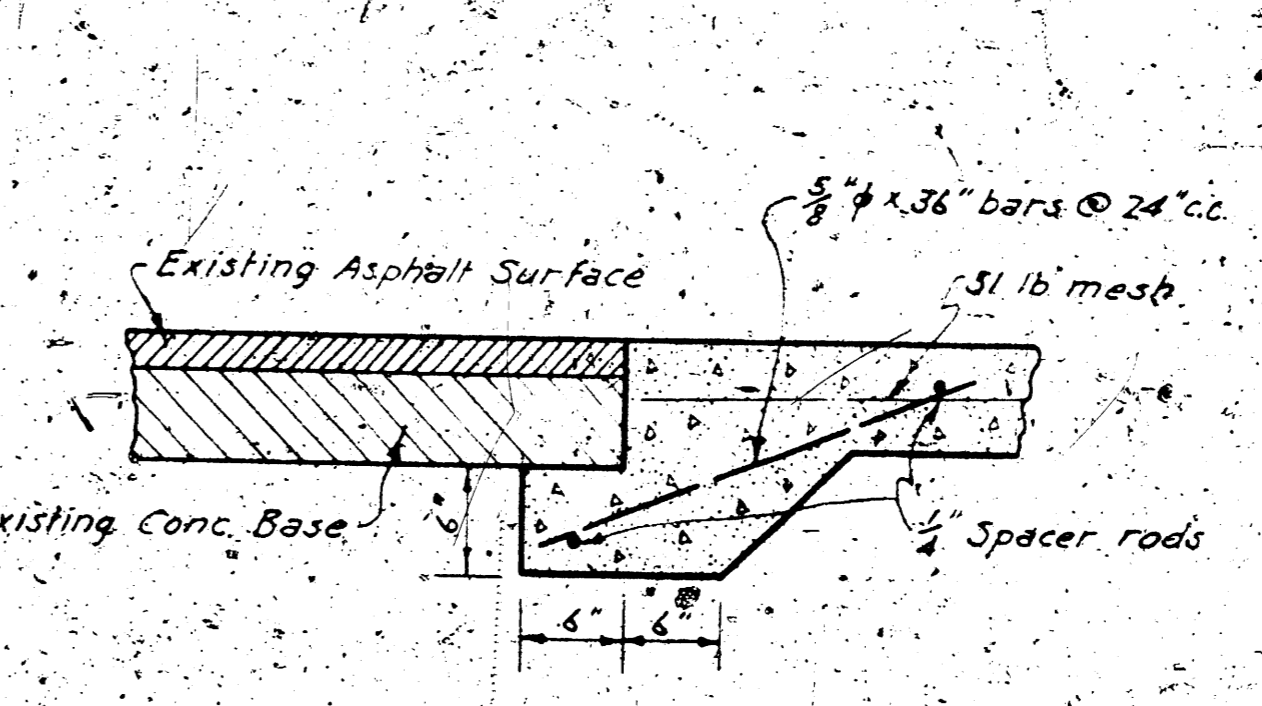


DETAIL OF CENTER JOINT

Remove 12" of existing base on each side of E.



DETAIL OF EXPANSION JOINT



DETAIL OF JOINT BETWEEN NEW AND EXISTING PAVEMENT

ENGINEERING DEPARTMENT
CITY OF WICHITA, KANSAS
P.L. BROCKWAY, CITY ENGINEER
AUGUST 1940 - DRAWN BY 662

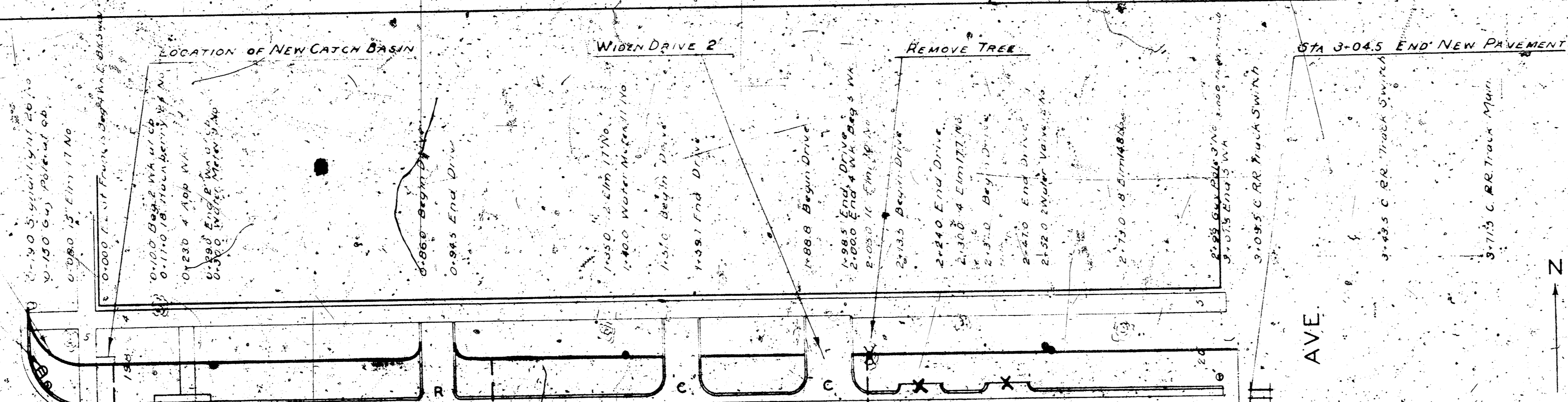
REBUILD RETURN WITH 15" R.
MOVE CATCH BASIN

MOVE CATCH BASIN
REBUILD RETURN WITH 15" R.

ST. FRANCIS AVE

AVE

SANTA FE AVE



PLANS FOR REPAVING
CENTRAL AVE.
EL. ST. FRANCIS AVE. TO WL. SANTA FE AVE.

- LEGEND
- S SIGNAL LIGHT
 - L LIGHT POLE
 - W WATER METER
 - B CATCH BASIN
 - M MAN HOLE
 - T TREE
 - R RESIDENTIAL DRIVE
 - C COMMERCIAL DRIVE
 - NEW CURB LINE
 - X ABANDON OR REMOVE

ENGINEERING DEPARTMENT
CITY OF WICHITA, KANSAS
P.L. BROCKWAY, CITY ENGINEER
SCALE 1" = 20'-0" DRAWN BY [Signature]
1940

North Walk
North Curb
Crown
South Walk
South Curb