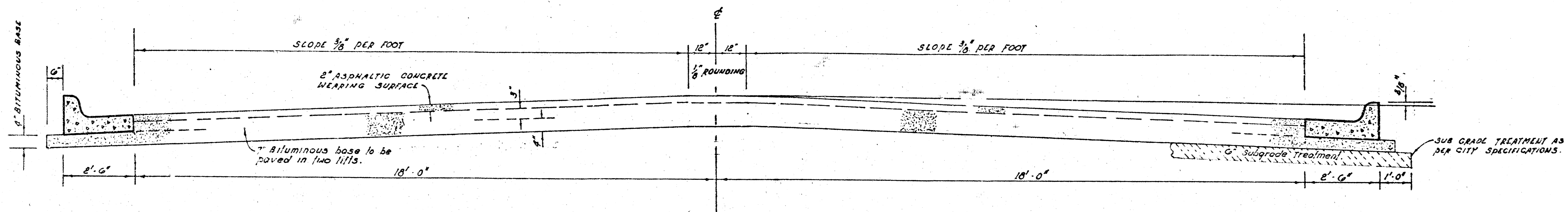


BROADMOOR
 S.L. LOT 3, BLK. 2, E.E. JABES-S.L. 21 ST. NO.
 PROJ. NO. DAKS 574072



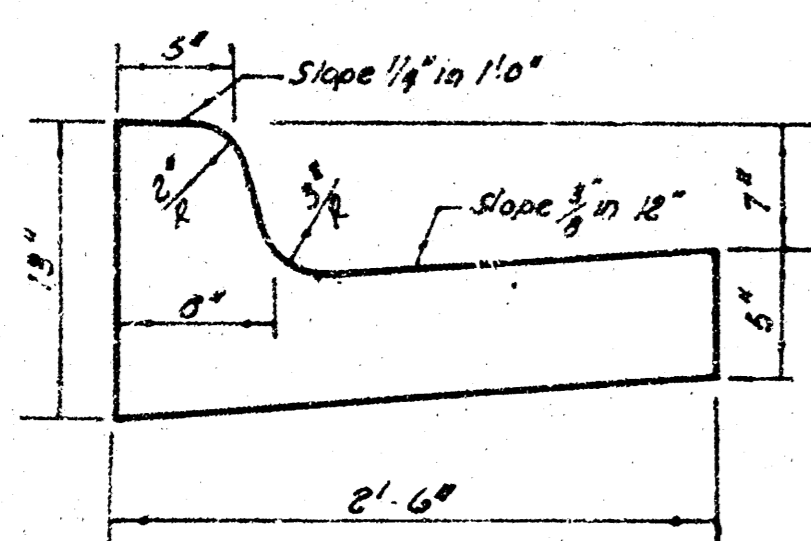
TYPICAL SECTION

The A.C. pavement between the curb & gutter shall be paid as sq yds 9" A.C. pavement (7" Bituminous Base). The Bituminous Base under the curb & gutter shall be paid as sq yds 9" Bituminous Base.

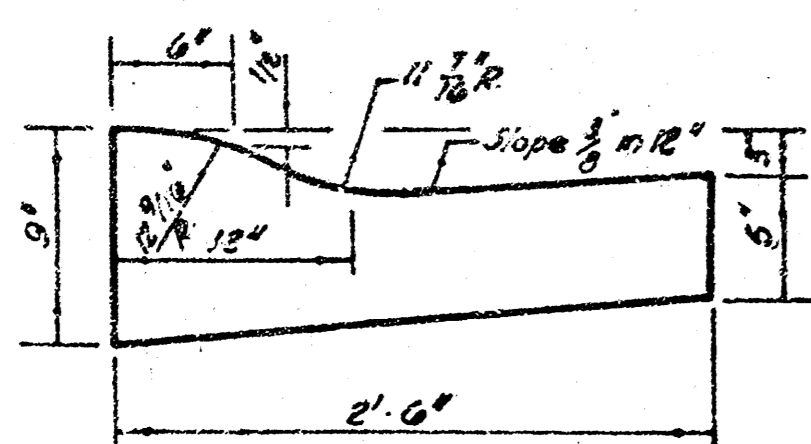
41' ASPHALTIC CONCRETE PAVEMENT WITH BITUMINOUS BASE

A TACK COAT OF EMULSIFIED ASPHALT (SS-1H) SHALL BE APPLIED AT AN APPROXIMATE RATE 0.05 GALLONS PER SQ YD BETWEEN LIFTS OF ASPHALTIC MATERIALS WHEN ORDERED BY THE ENGINEER. TACK COAT WILL NOT BE PAID FOR DIRECTLY AND SHALL BE CONSIDERED AS SUBSIDIARY TO PRICE BID FOR ASPHALTIC PAVEMENT. BITUMINOUS BASE AND ASPHALTIC CONCRETE WEARING SURFACE SHALL BE PLACED WITH A LAYDOWN MACHINE HAVING AUTOMATIC ELECTRONIC CONTROLS FOR CROWN AND GRADE. CONSTRUCTION JOINTS IN EACH LIFT SHALL BE STAGGERED A MINIMUM DISTANCE OF 1' WITH JOINTS IN PRECEDING LIFTS AND SUCH THAT A JOINT WILL BE CONSTRUCTED ON THE PAVEMENT CENTERLINE IN THE TOP LIFT.

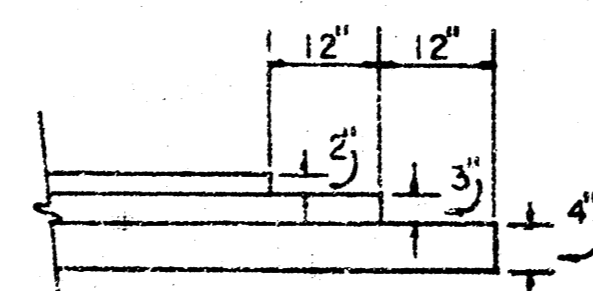
COMBINED CURB & GUTTER



ROLL TYPE CURB & GUTTER



DETAIL OF TRANSVERSE CONSTRUCTION JOINTS



TRANSVERSE CONSTRUCTION JOINTS SHALL BE CONSTRUCTED IN FLEXIBLE BASE PAVEMENTS AT LOCATIONS WHERE PAVEMENT TEMPORARILY ENDS TO FACILITATE FUTURE PAVEMENT CONSTRUCTION AS SHOWN BY DETAIL. THE COST OF CONSTRUCTING THE TRANSVERSE CONSTRUCTION JOINTS SHALL NOT BE MEASURED OR PAID FOR DIRECTLY BUT SHALL BE INCLUDED IN THE BID PRICE FOR SQUARE YARDS OF ASPHALTIC CONCRETE PAVEMENT.

CITY OF WICHITA, KANSAS

DEPARTMENT of PUBLIC WORKS - Engineering Division.

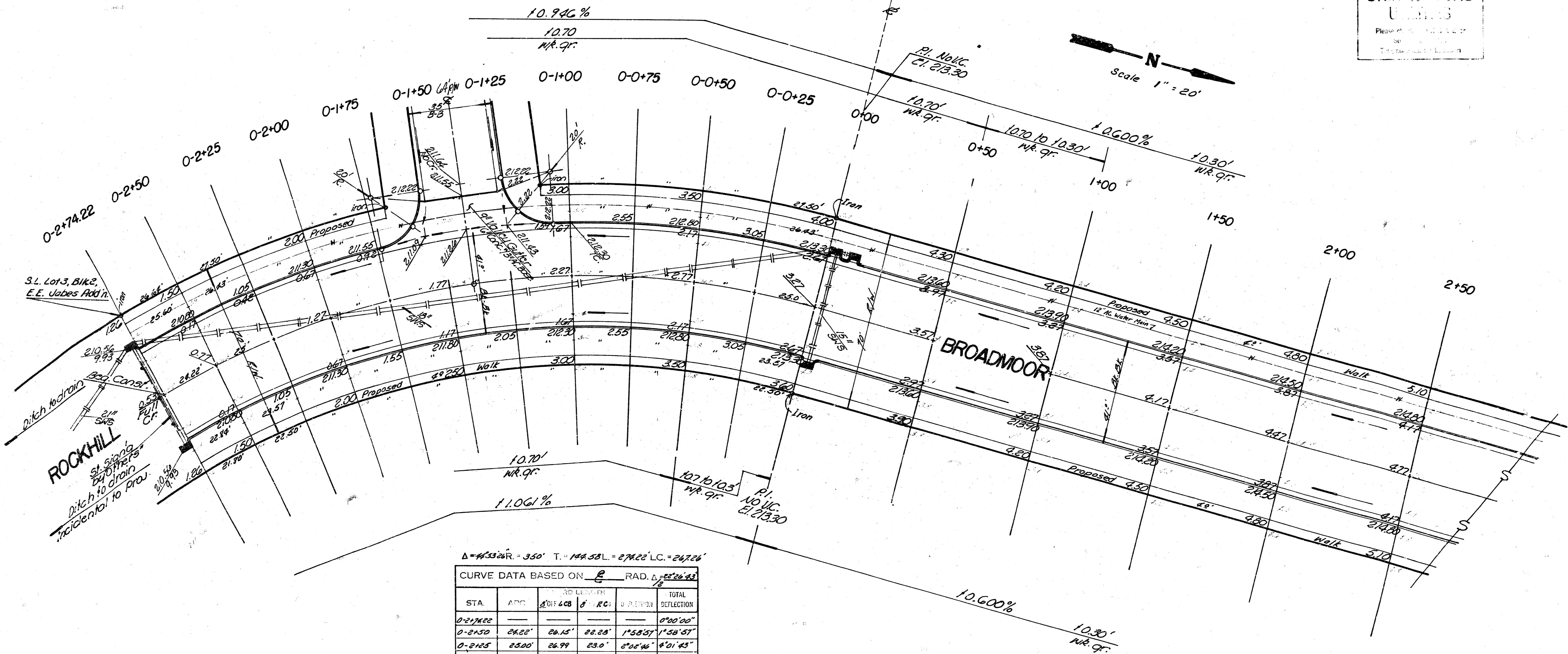
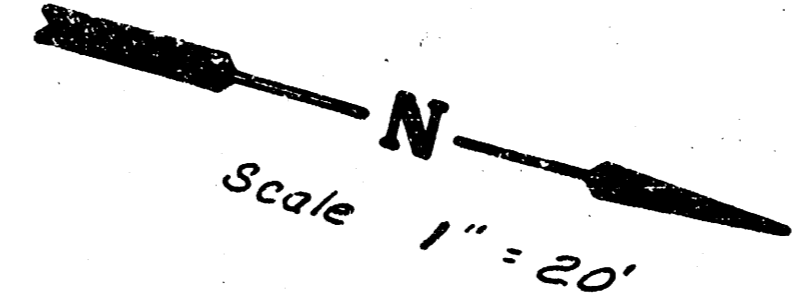
R. W. LINN CITY ENGINEER

DATE October, 1946 Proj. No. 4



B.M. 214.57 - City Sta., 45° N. & 43° E. of E's Rock Rd. & 21st St. No.
 B.M. 217.83 - R.R. Spike, S.S.T.P. N. Side 21st St. No. and approx. E.L. Broadmoor.
 Base Line: E of Broadmoor.

CAUTION
 UNDERGROUND UTILITIES
 Please refer to utility maps for location of existing utilities.



Survey Done by
 P. Briggs & Son
 Chgo. Ill.

$\Delta = 43.26^\circ R = 350'$ T = 144.58' L = 274.22' LC = 267.24'

CURVE DATA BASED ON $\frac{E}{R}$ RAD. $\Delta = 43.26^\circ$

STA.	ARC	CHORD	PERCENT	DEFLECTION	TOTAL DEFLECTION
0+2+74.22					0°20'00"
0+2+50	24.22'	26.15'	22.28'	1°58'57"	1°58'57"
0+2+25	23.00'	26.99'	23.0'	2°01'45"	2°01'45"
0+2+00	"	"	"	2°02'47"	2°04'30"
0+1+75	"	"	"	2°02'47"	2°07'17"
0+1+50	"	"	"	2°02'46"	2°10'23"
0+1+25	"	"	"	2°02'47"	2°12'50"
0+1+00	"	"	"	2°02'46"	2°15'36"
0+0+75	"	"	"	2°02'47"	2°18'23"
0+0+50	"	"	"	2°02'47"	2°21'10"
0+0+25	"	"	"	2°02'46"	2°23'56"
0+0+00	25.0'	26.99'	23.0'	2°02'47"	2°26'43"

"EARTHWORK QUANTITIES"

	EXCAV.	FILL
* Property	3,334.9 C.Y.	3.1 C.Y.
20%	333.5	0.3
Total	3,668.4 C.Y.	3.4 C.Y.
* City	61.0 C.Y.	-
+10%	4.1	-
Total	671 C.Y.	-

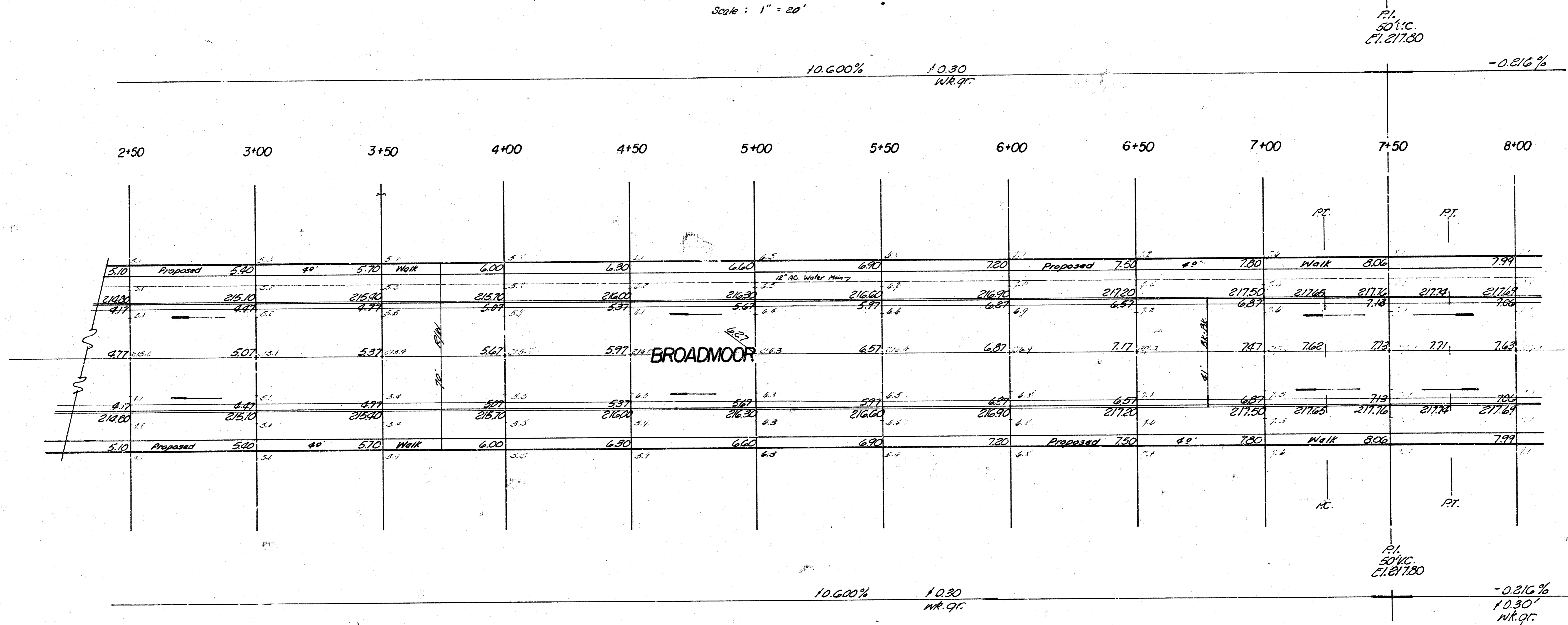
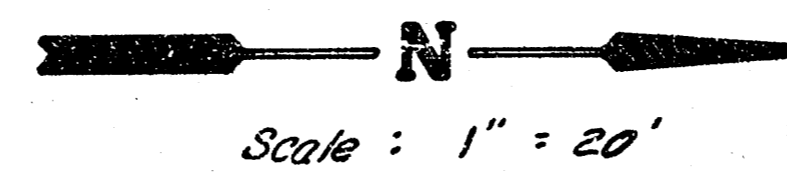
BROADMOOR
 S.L. LOT 3, BLK 2, E.E. JABES - S.L. 21 ST. NO.
 PROJ. NO. DAKS574072

Mar. 73302 S.F.

2/6
 Revised 6-7-77

FILMED FROM THE BEST AVAILABLE COPY

B.M. 21437 - City Sid., 45° N & 48° E. of Q's Rock Rd & 21st St. No.
 B.M. 21123 - R.R. Spike, S.S. T.P., N.S. 21st St. No. & approx. E.L. Broadmoor.
 Base Line = & Broadmoor.



P.I.
 50% V.C.
 E.L. 217.00

P.I.
 50% V.C.
 E.L. 217.00

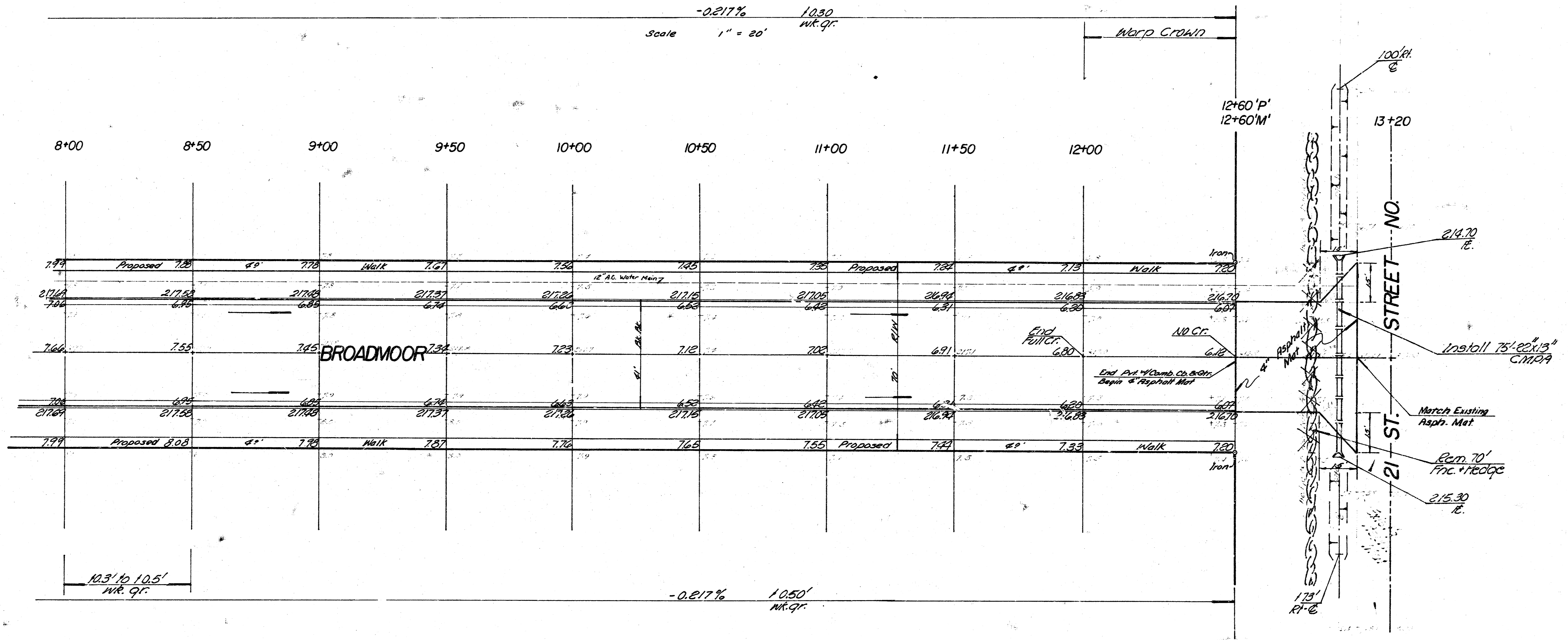
BROADMOOR
 S.L. LOT 3, BLK. 2, E.E. JABES - S.L. 21ST. NO.
 PROJ. NO. DAKS574072

3/8

3/4

FILMED FROM THE BEST
 AVAILABLE COPY

B.M. 21157 - City SH, 45' N & 40' E of E of Rock Rd & 21st St No.
 B.M. 21183 - R.R. Spike, S.S. T.P. N.S. 21st St. No. & E.L. Broadmoor
 Base Line = E Broadmoor



BROADMOOR
 S.L. LOT 3, BLK 2, E.E. JAMES-S.L. 21 ST. NO.
 PROJ. NO. DAKS574072

4/8

4/4