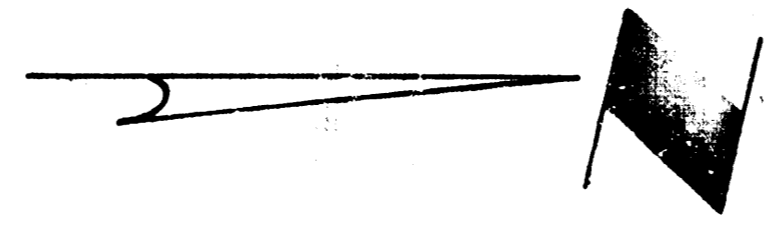


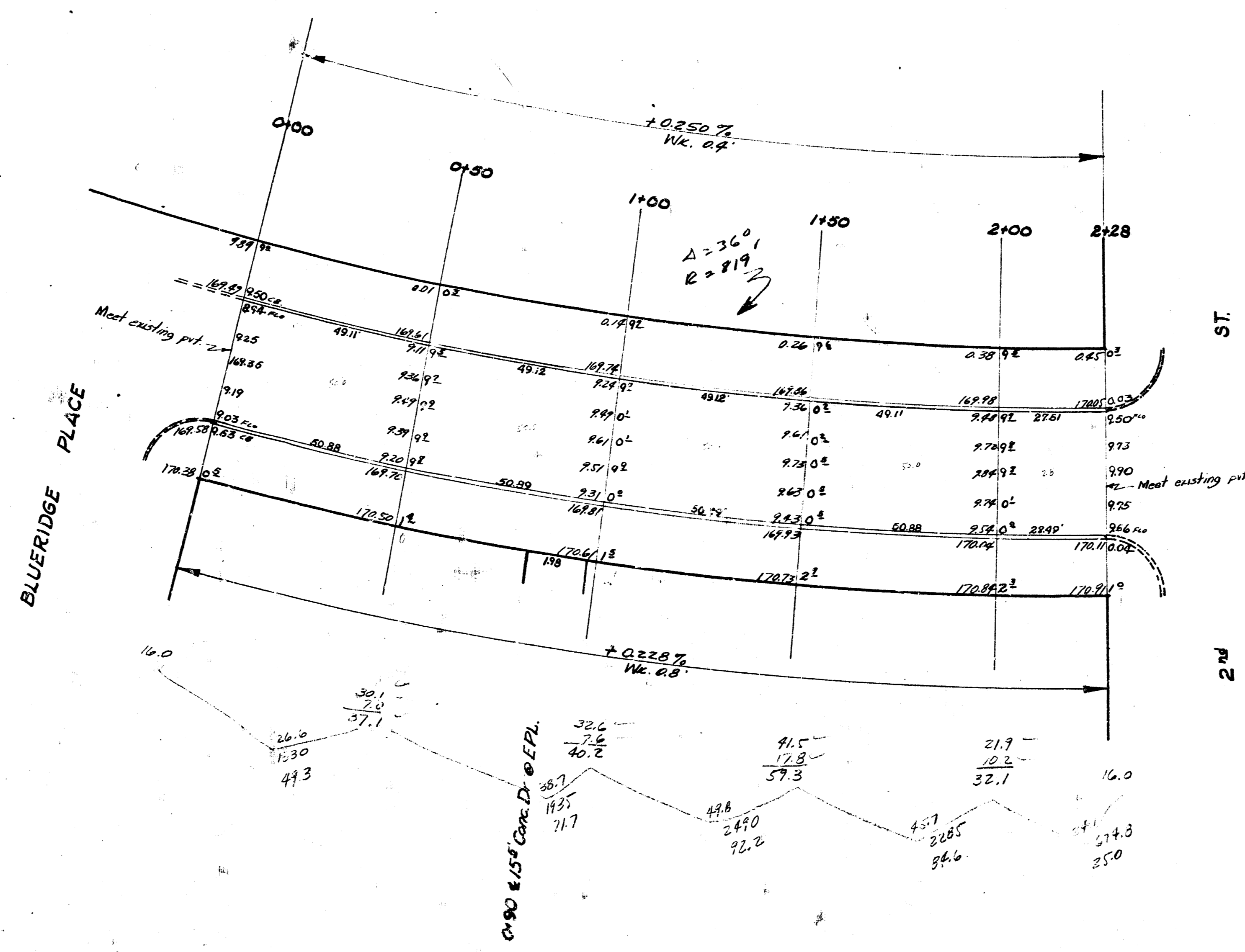
H-2

B.M. 170.71 G in Globe E and Radius NE cor Second / W Brookside Parkway.

STATIONING IS ON E



EVS.
222.8
+12.72
355.1 at 405.



E. BROOKSIDE PARKWAY
 NL Bluertidge - SL 2nd St
 30' Conc. & Cb.
 City of Wichita, Kansas
 L. K. White City Engineer
 January 1952 Proj No. C11-228



