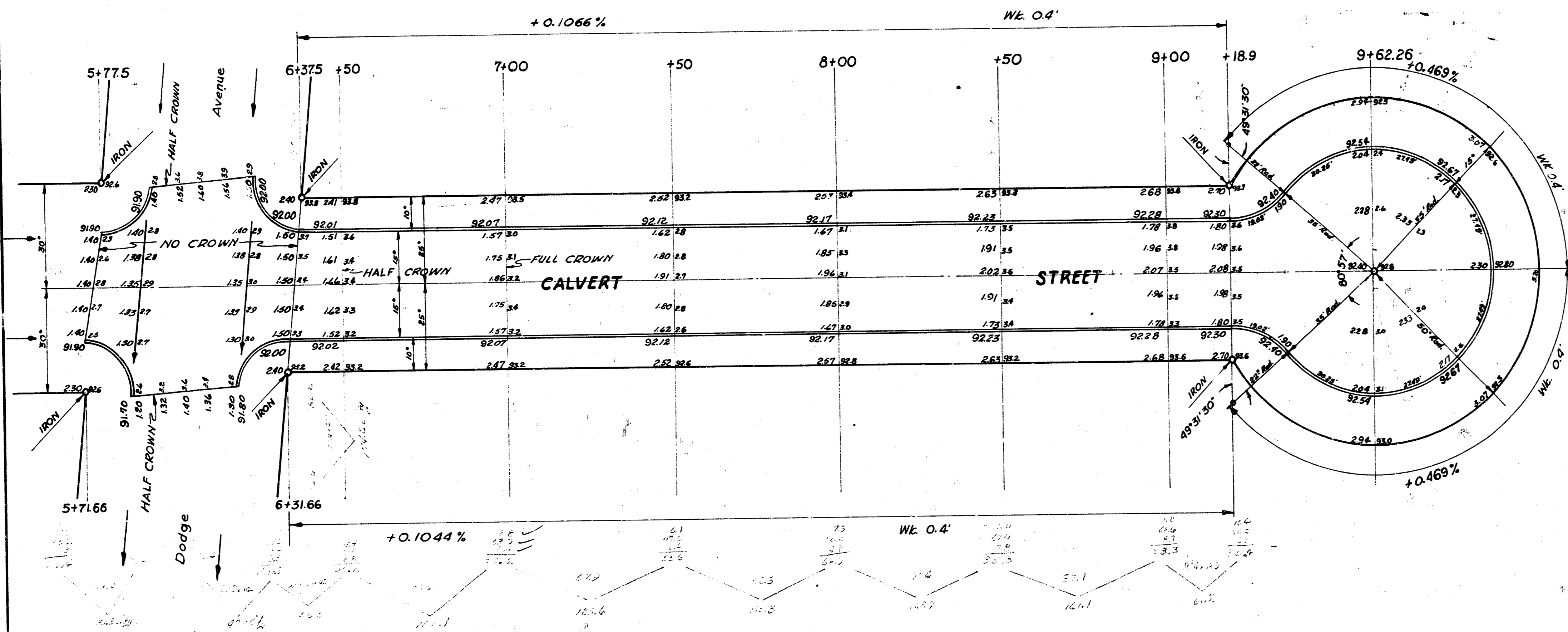


BM: - 94.09 SW cor conc porch Ho #1430 W 34th St So.
 BM: - 91.85 "b" in Globe N cb Calvert @ EL Elizabeth.



TIES TO IRON - Center of Cul-de-Sac.
 50.0' SW to iron.
 50.0' NW to iron.
 58.24' NE to nail in tree.
 68.58' SE to nail in tree.

CALVERT STREET
 WL Dodge to include Cui-de-Sac.
 30' Conc. & Cb.
 CITY OF WICHITA, KANSAS
 B. E. SMITH CITY ENGINEER
 March 1958 PROJ. NO. CIT-81

