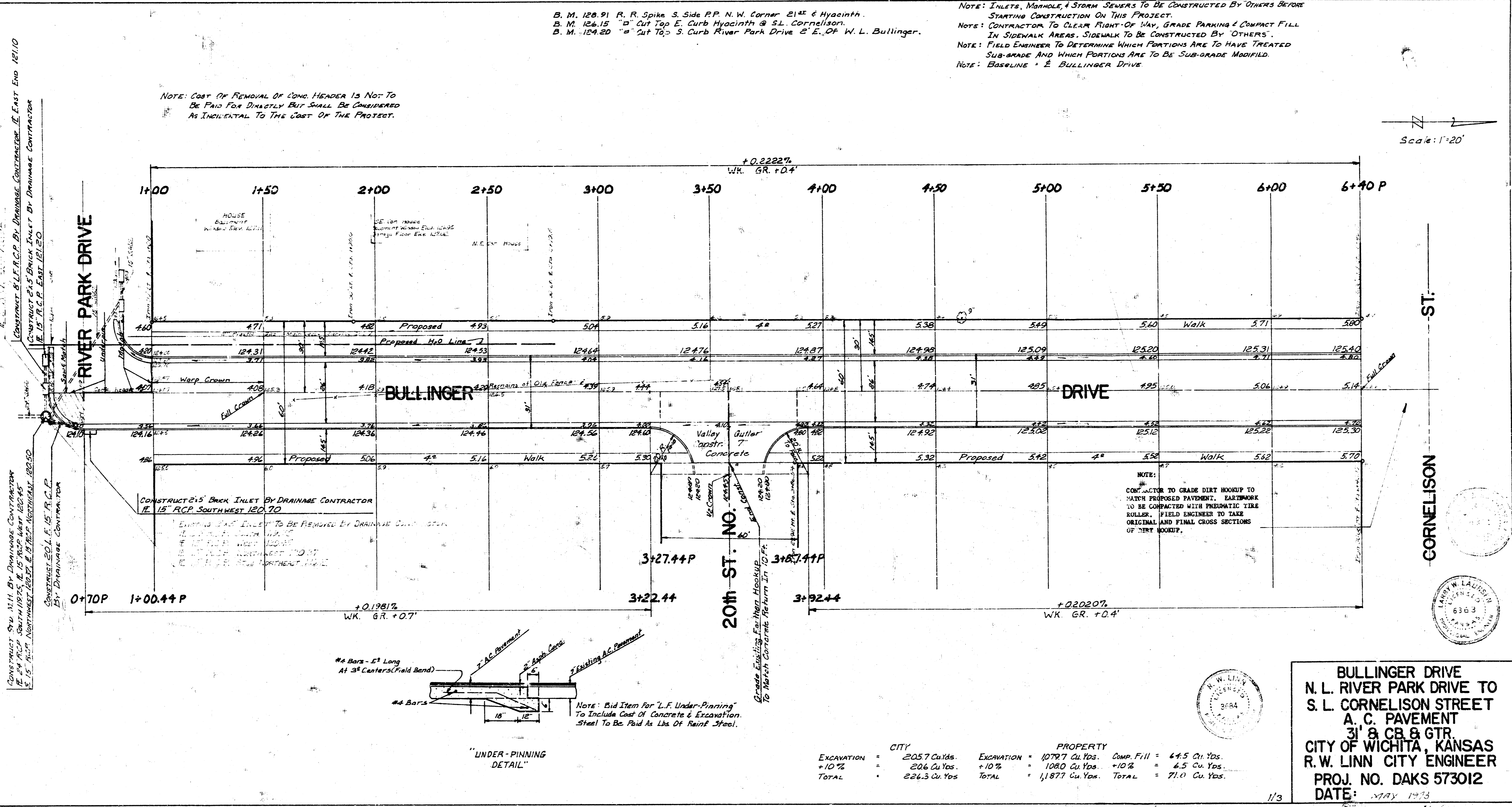


Survey, Arrog
Plan, Laurion
City, Laurion
Chicago, Ill.



B. M. 120.91 R. R. Spike S. Side R.P. N.W. Corner 21st & Hyacinth.
B. M. 126.15 "D" Cut Top E. Curb Hyacinth @ S.L. Cornelison.
B. M. 124.20 "a" Cut Top S. Curb River Park Drive @ E. of W.L. Bullinger.

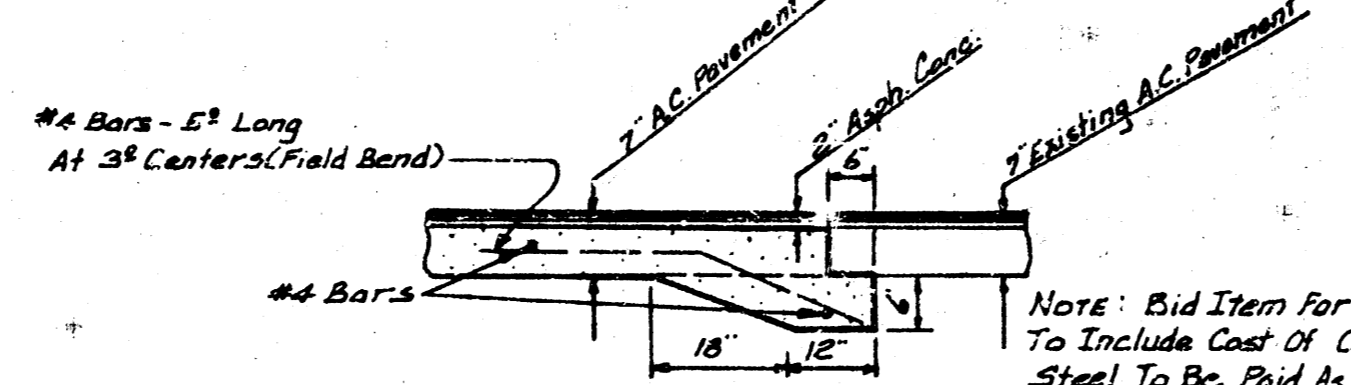
NOTE: INLETS, MANHOLE & STORM SEWERS TO BE CONSTRUCTED BY OTHERS BEFORE STARTING CONSTRUCTION ON THIS PROJECT.
NOTE: CONTRACTOR TO CLEAR RIGHT-OF-WAY, GRADE PARKING & COMPACT FILL IN SIDEWALK AREAS. SIDEWALK TO BE CONSTRUCTED BY OTHERS.
NOTE: FIELD ENGINEER TO DETERMINE WHICH PORTIONS ARE TO HAVE TREATED SUB-GRADE AND WHICH PORTIONS ARE TO BE SUB-GRADE MODIFIED.
NOTE: BASELINE = E. BULLINGER DRIVE

NOTE: COST OF REMOVAL OF CONC. HEADER IS NOT TO BE PAID FOR DIRECTLY BUT SHALL BE CONSIDERED AS INCIDENTAL TO THE COST OF THE PROJECT.

Scale: 1"=20'

CONTRACTOR TO CONSTRUCT 15" R.C.P. BY DRAINAGE CONTRACTOR (E. EAST END 1211.0)
CONTRACTOR TO CONSTRUCT 15" R.C.P. BY DRAINAGE CONTRACTOR (E. EAST END 1211.0)
CONTRACTOR TO CONSTRUCT 15" R.C.P. BY DRAINAGE CONTRACTOR (E. EAST END 1211.0)

NOTE:
CONTRACTOR TO GRADE DIRT HOODUP TO MATCH PROPOSED PAVEMENT. EARTHWORK TO BE COMPACTED WITH PNEUMATIC TIRE ROLLER. FIELD ENGINEER TO TAKE ORIGINAL AND FINAL CROSS SECTIONS OF DIRT HOODUP.



CITY		PROPERTY	
Excavation	= 205.7 Cu. Yds.	Excavation	= 1079.7 Cu. Yds.
+10%	= 206 Cu. Yds.	+10%	= 1080 Cu. Yds.
TOTAL	= 226.3 Cu. Yds.	TOTAL	= 1187.7 Cu. Yds.
		Comp. Fill	= 64.5 Cu. Yds.
		+10%	= 6.5 Cu. Yds.
		TOTAL	= 71.0 Cu. Yds.

BULLINGER DRIVE
N. L. RIVER PARK DRIVE TO
S. L. CORNELISON STREET
A. C. PAVEMENT
31' @ CB & GTR
CITY OF WICHITA, KANSAS
R. W. LINN CITY ENGINEER
PROJ. NO. DAKS 573012
DATE: MAY 1973