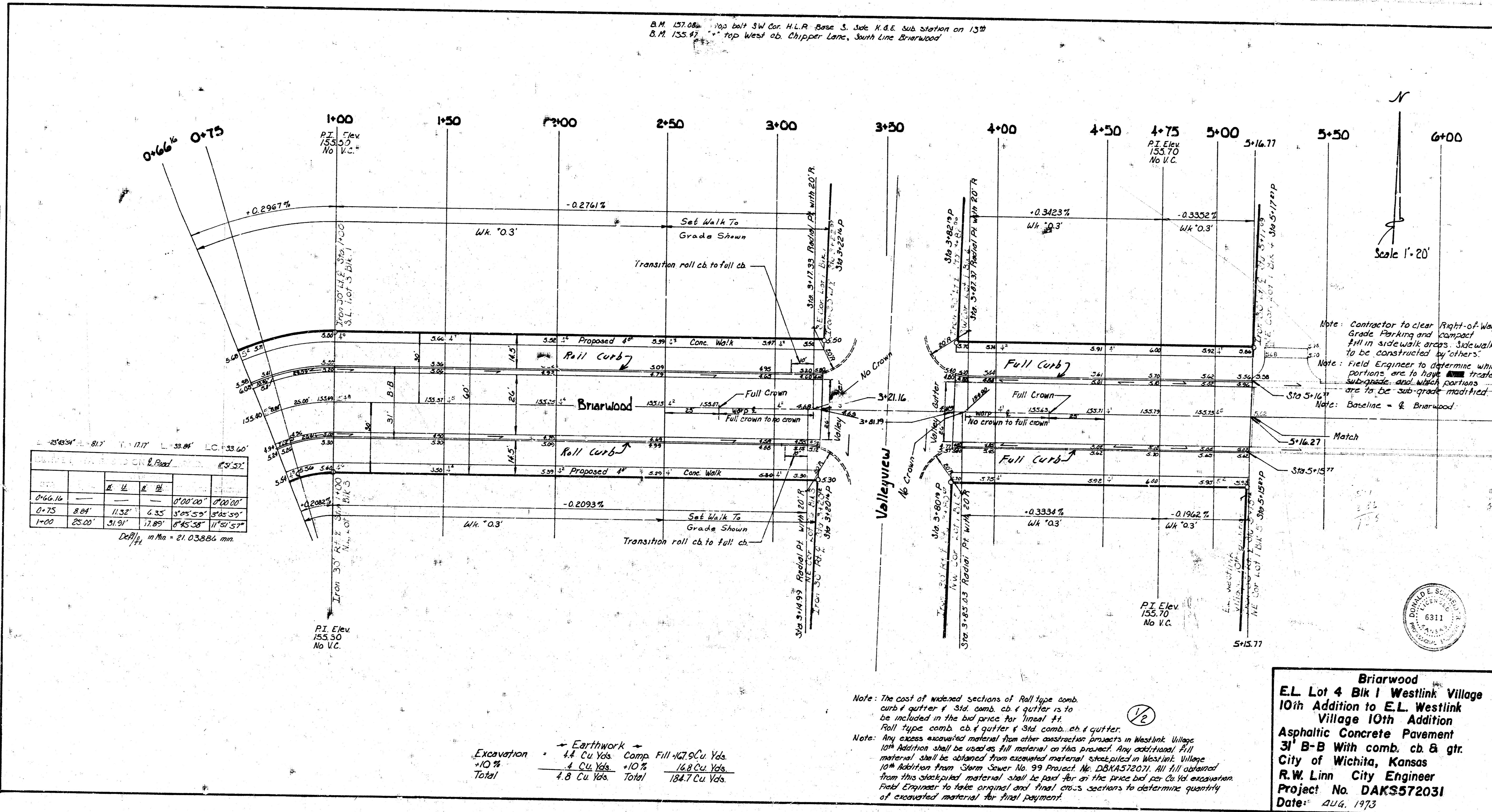


B.M. 157.06 102' belt SW Cor. H.L.R. Base S. Side N.E.E. Sub Station on 13th
 B.M. 155.47 Top West ab. Chipper Lane, South Line Briarwood



20' x 30' 1/4" Scale
 Plan, E.L. 31K
 1/2" = 10' 0"

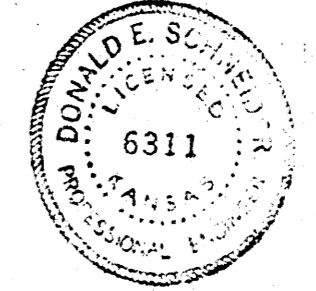
Station	E	L	E	R	LC
0+66.6	8.04'	11.52'	6.35'	3'05" 35"	0'00" 00"
0+75	25.00'	31.91'	17.89'	0'45" 58"	11'51" 57"

Deflection in Mo = 21.03886 mm

Note: Contractor to clear Right-of-Way, Grade, Parking and compact fill in sidewalk areas. Sidewalk to be constructed by others.
 Note: Field Engineer to determine which portions are to have treated sub-grade, and which portions are to be sub-grade modified.
 Note: Baseline = & Briarwood

Excavation	Earthwork	Comp. Fill
+10%	4.4 Cu Yds.	+10% 167.9 Cu Yds.
Total	4.8 Cu Yds.	Total 184.7 Cu Yds.

Note: The cost of widened sections of Roll type curb & gutter & Sid. comb. cb & gutter is to be included in the bid price for 1' lineal ft. Roll type curb, cb & gutter & Sid. comb. cb & gutter.
 Note: Any excess excavated material from other contractor projects in Westlink Village 10th Addition shall be used as fill material on this project. Any additional fill material shall be obtained from excavated material stockpiled in Westlink Village 10th Addition from Storm Sewer No. 99 Project No. DAKAS72031. All fill obtained from this stockpiled material shall be paid for in the price bid for the excavation. Field Engineer to take original and final cross sections to determine quantity of excavated material for final payment.



Briarwood
 E.L. Lot 4 Blk I Westlink Village
 10th Addition to E.L. Westlink Village 10th Addition
 Asphaltic Concrete Pavement
 3' B-B With comb. cb & gtr.
 City of Wichita, Kansas
 R.W. Linn City Engineer
 Project No. DAKS72031
 Date: AUG. 1973