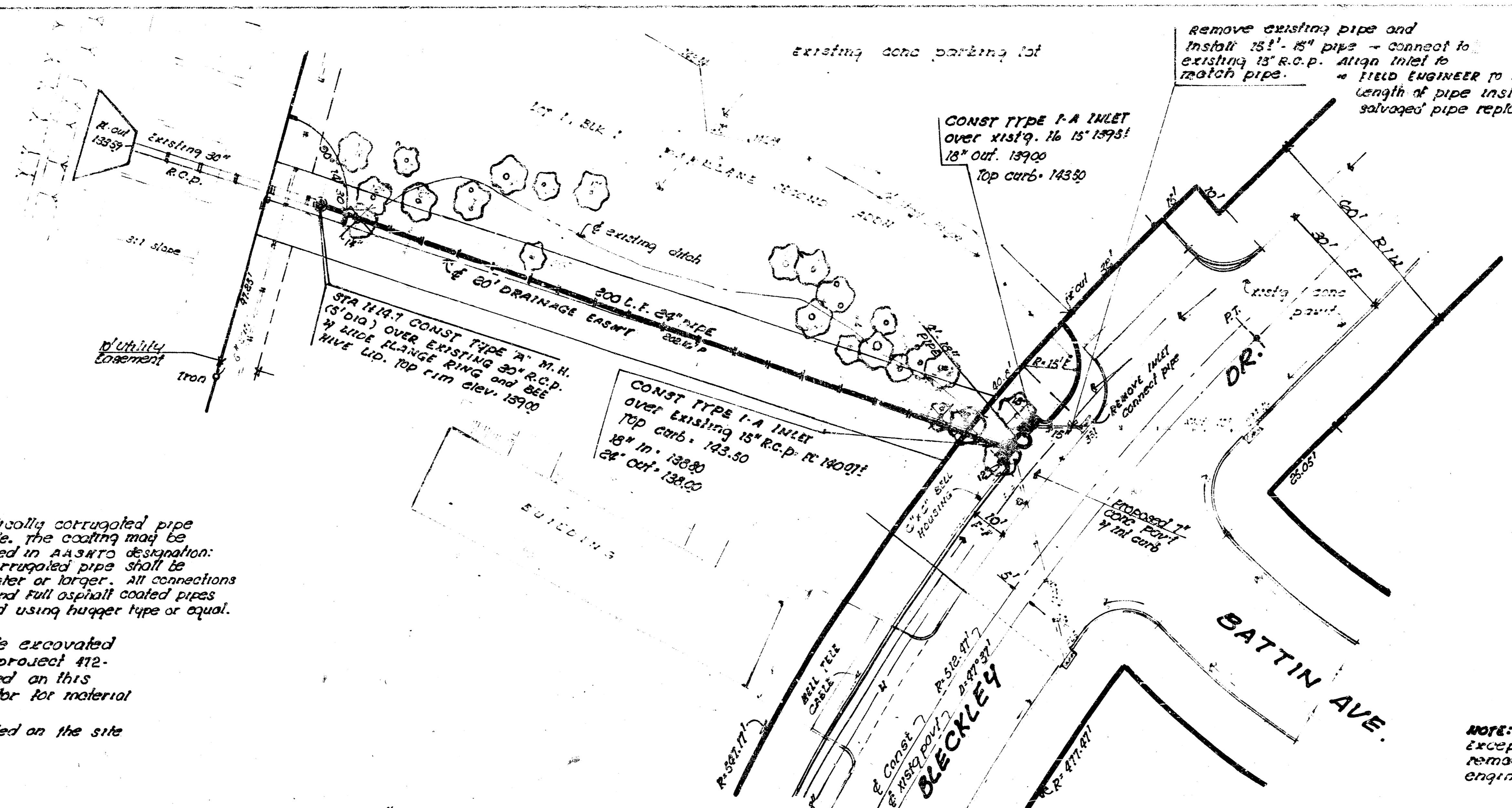


PLAN SCALE 1"=20'



NOTE: All metal pipes shall be helically corrugated pipe fully coated both inside and outside. The coating may be bituminous or polymeric as specified in AASHTO designation: M-24, Type B. All such coated corrugated pipe shall be smooth flow pipes for sizes 24" diameter or larger. All connections for these fully coated or fully paved and full asphalt coated pipes shall be fairly watertight constructed using huffer type or equal.

NOTE TO CONTRACTOR: All useable excavated material from BLECKLEY DRIVE PROJECT #12-76-245-80292000-000-001 to be used on this project. Contact paving contractor for material and stock pile location. Any excess excavation to be wasted on the site at the discretion of the engineer.

Remove existing pipe and install 15" 15" pipe - connect to existing 15" R.C.P. Align inlet to match pipe. FIELD ENGINEER TO determine exact length of pipe installed, and any salvaged pipe replaced.

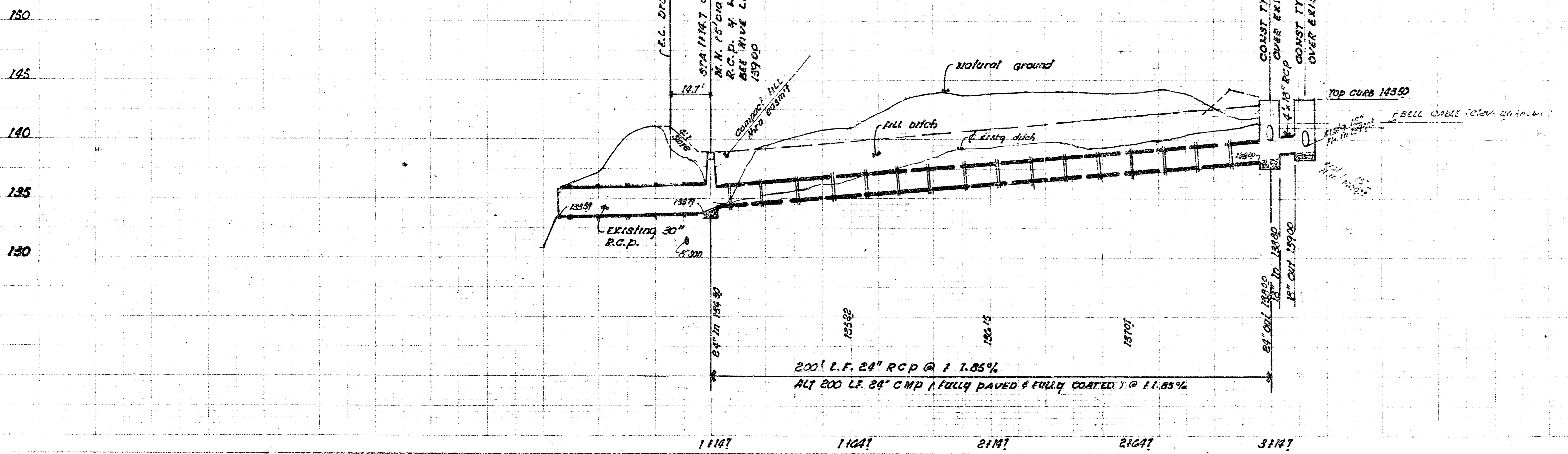
CONST TYPE I-A INLET OVER EXISTING 15" R.C.P. AT NORTH TOP CURB 143.50

CONST TYPE I-A INLET OVER EXISTING 15" R.C.P. AT NORTH TOP CURB 143.50 15" IN 138.50 24" OUT 131.00

NOTE: TREES REMOVAL MARKED THUS. Except that any tree marked for removal which in the opinion of the engineer can be saved, shall be saved.

BM. 142.65 N.W. Cor Lower Conc. Strip Apt. #1501 Battin

PROFILE SCALE: HORIZ. 1"=20' VERT. 1"=5'



**'DRAINAGE' IN CONNECTION WITH PAVING BLECKLEY DR. FROM N.L. HARRY STREET TO EL. LOT 4, BLK 2, PARKLANE ADD.**  
**CITY OF WICHITA, KANSAS**  
 DEAN SELLERS - ACTING CITY ENGINEER  
 DATE \_\_\_\_\_  
 PROJ No. 972-76-245-80292000-000-002

