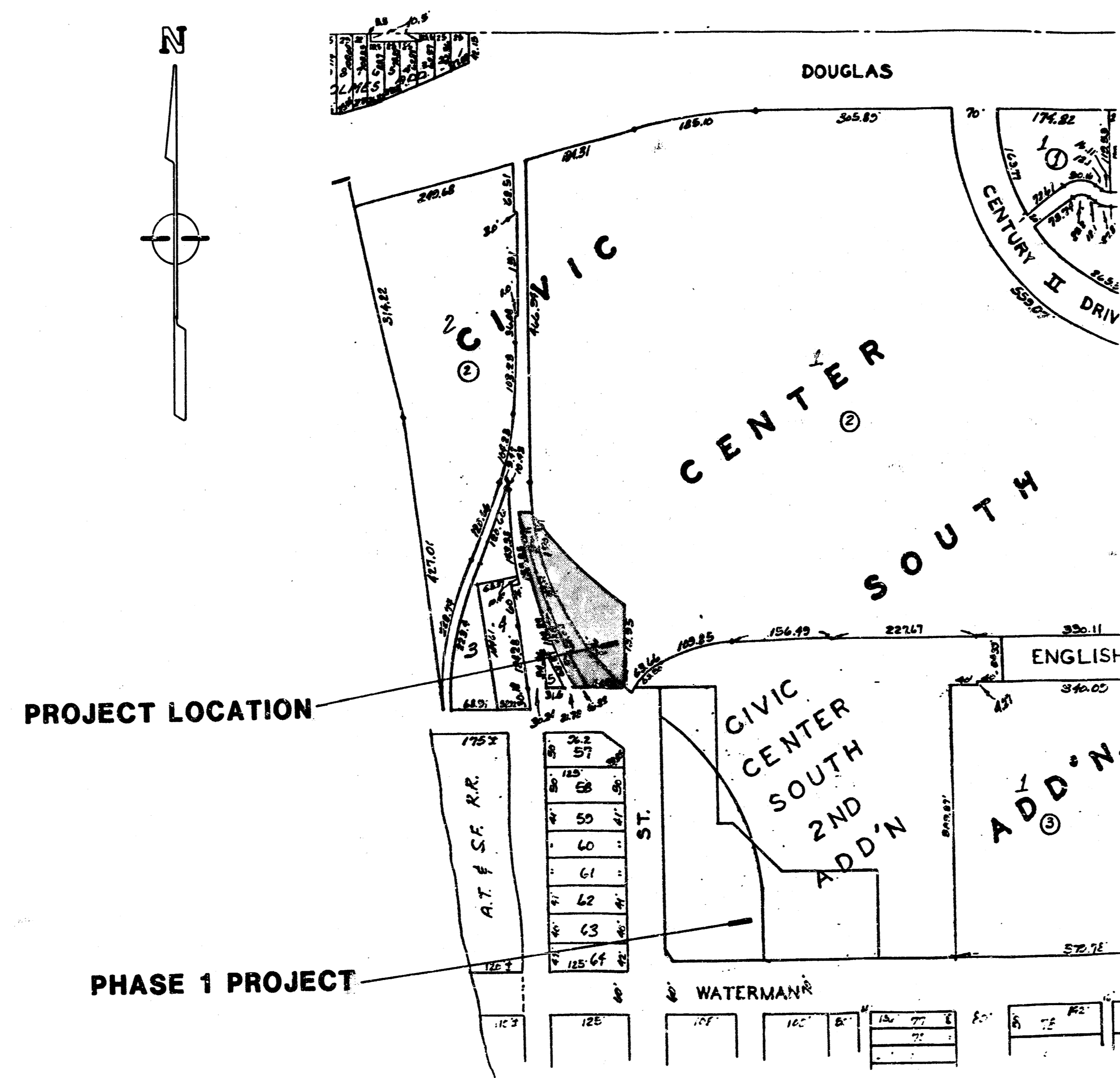


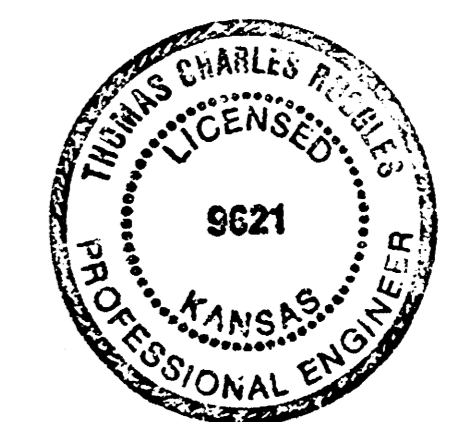
**PHASE 2
PARKING LOT IMPROVEMENTS FOR
CENTURY II
EXHIBITION CENTER**

**PROJECT NUMBER
472-76-245-81501-000-000-001**

- INDEX
1. Title and Location Map
 2. Typical Sections
 3. Pavement Plan
 4. Incidental Drainage
 5. Drop Inlet Detail
 6. Parking Lot Lighting
 7. Earthwork Sections

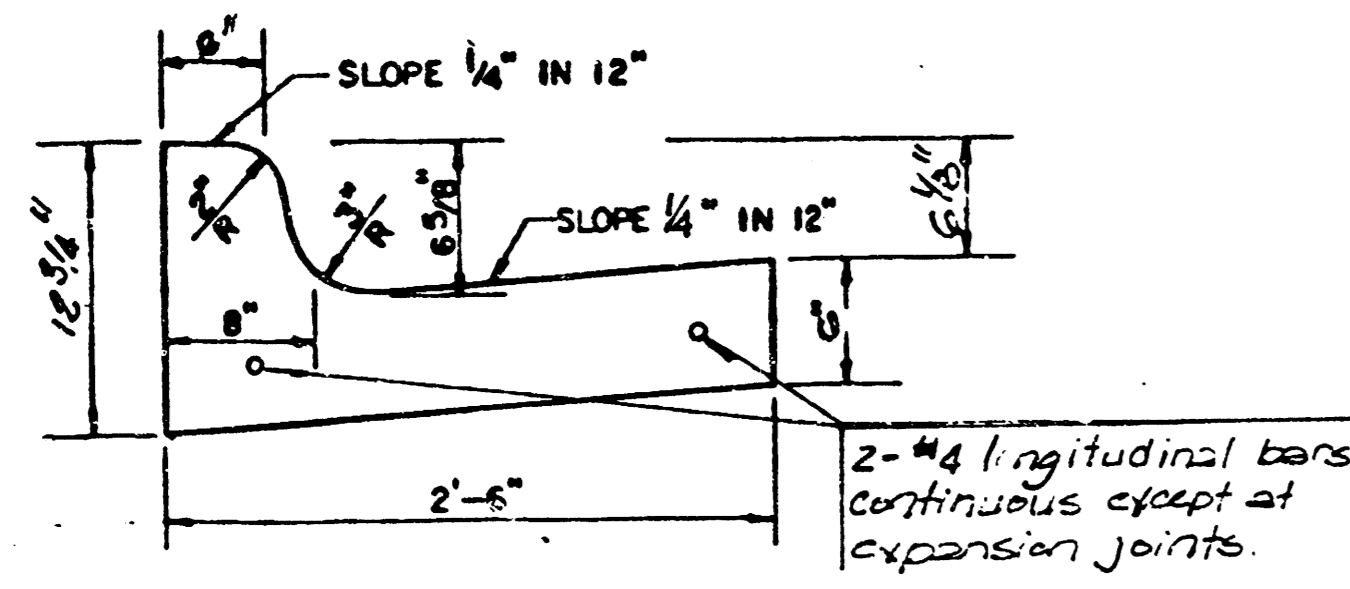


**CITY OF WICHITA, KANSAS
MICHAEL E. LINDEBAK CITY ENGINEER**

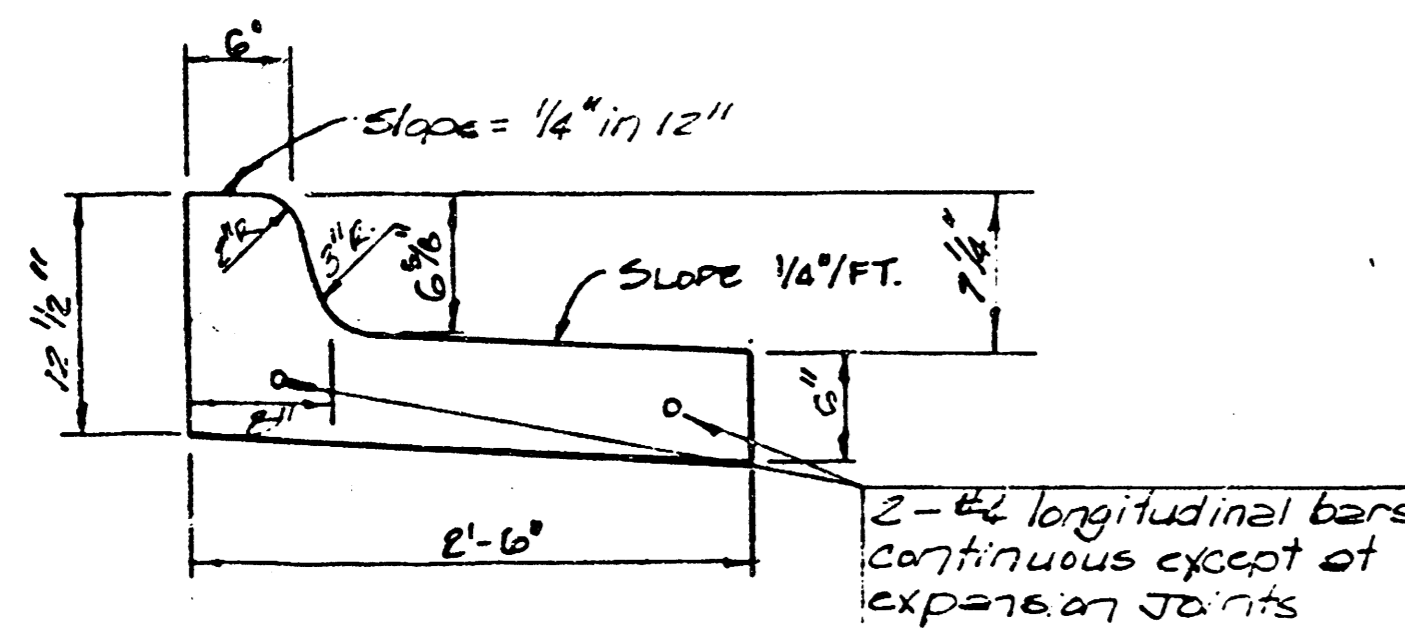


ENGINEER - T.C.K.
SURVEY - H.P. LEE (P.A. 25)
CONSULT - J.P. - DATE 4/15/80

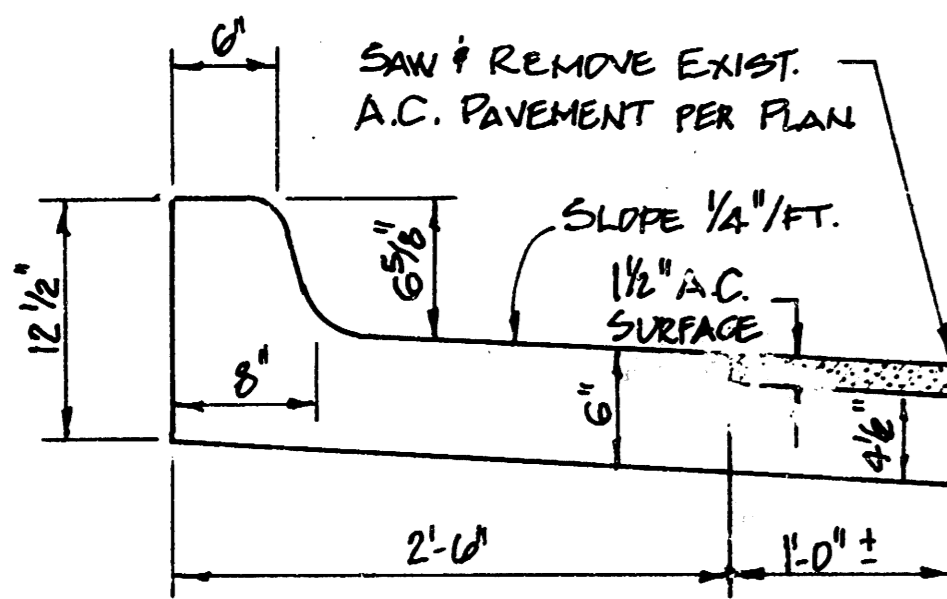
BAUGHMAN COMPANY, P.A.
SURVEYING & ENGINEERING
316/262-7271 • 330 LAURA • WICHITA, KANSAS 67211



HIGH-EDGE CURB DETAIL

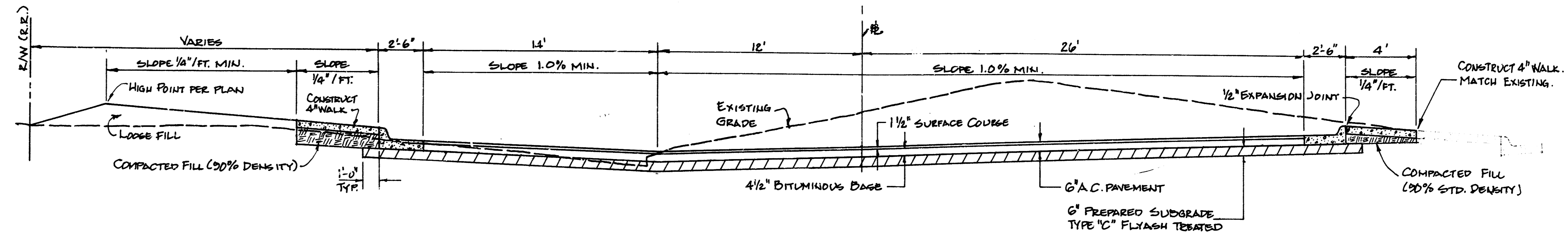


LOW-EDGE CURB DETAIL

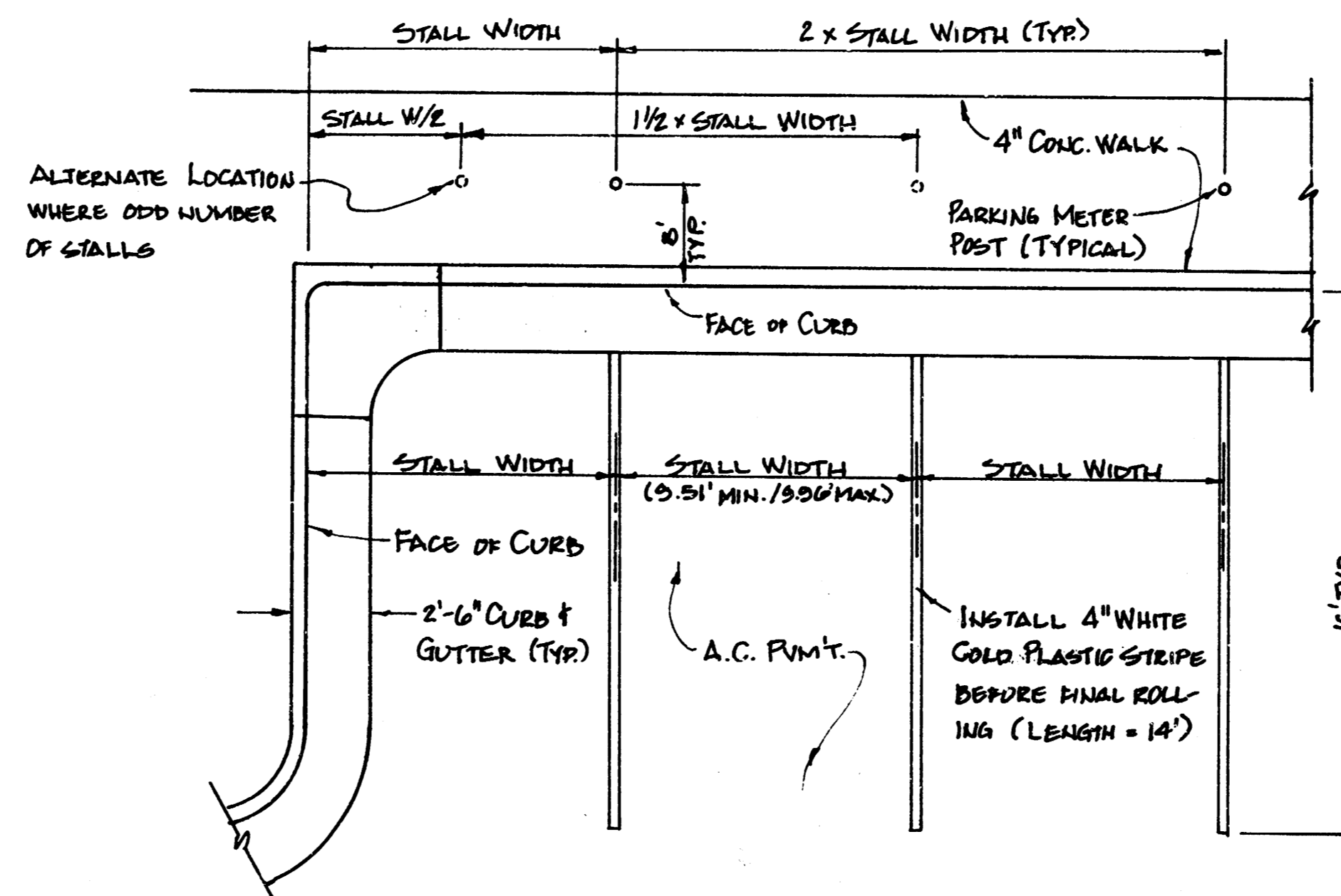


SPECIAL CURB DETAIL

NOTE: HIGH-EDGE, LOW-EDGE, AND TRANSITION COMBINED CURB & GUTTER IS TO BE PAID AS BID FOR L.F. COMBINED CURB & GUTTER (6.96').

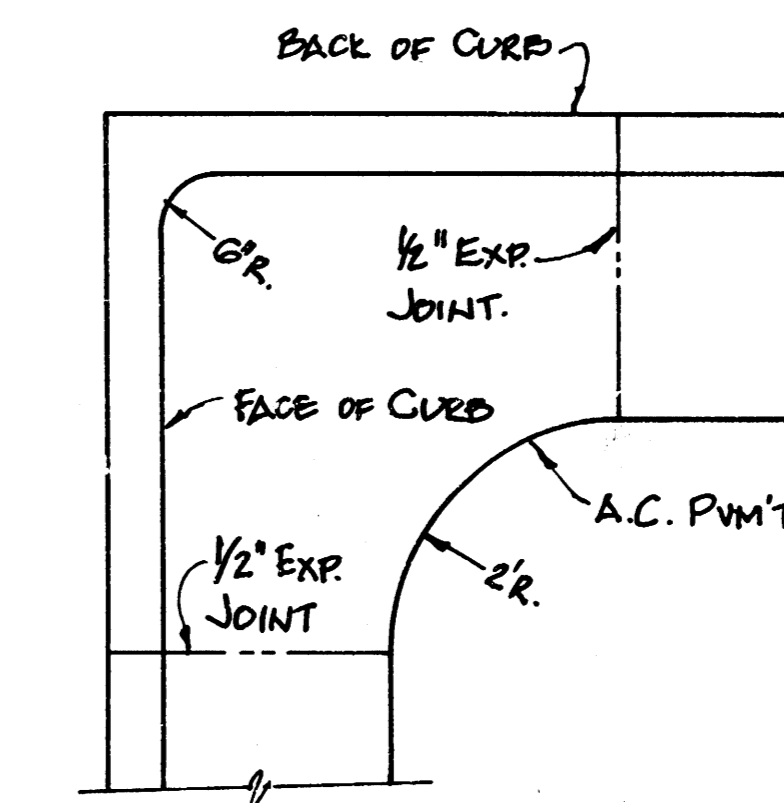


**TYPICAL SECTION
STA. 1+00**



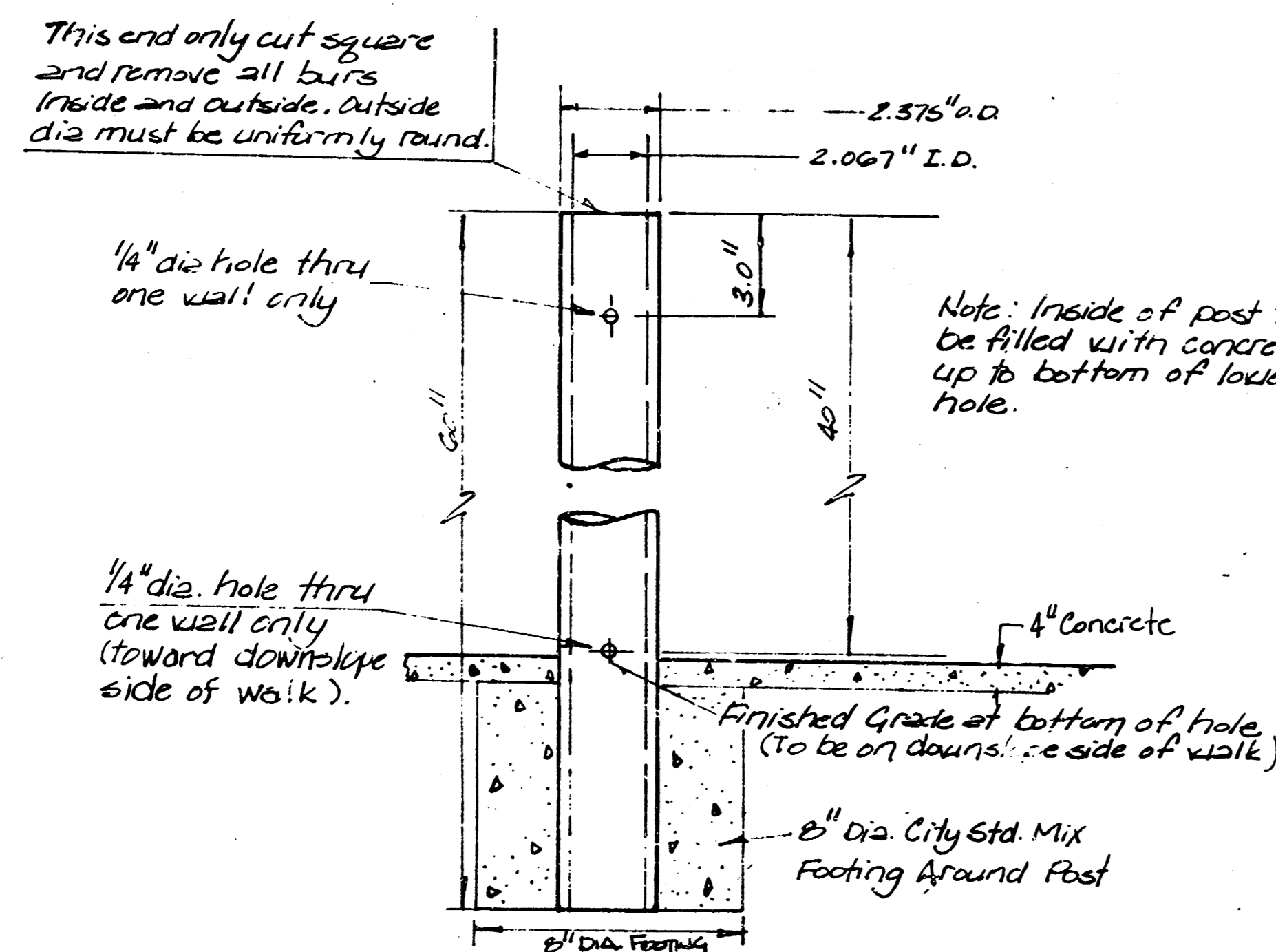
STRIPING AND PARKING METER POST PLAN

NOTE: PARKING METERS AND POSTS TO BE FURNISHED AND INSTALLED BY "OTHERS".



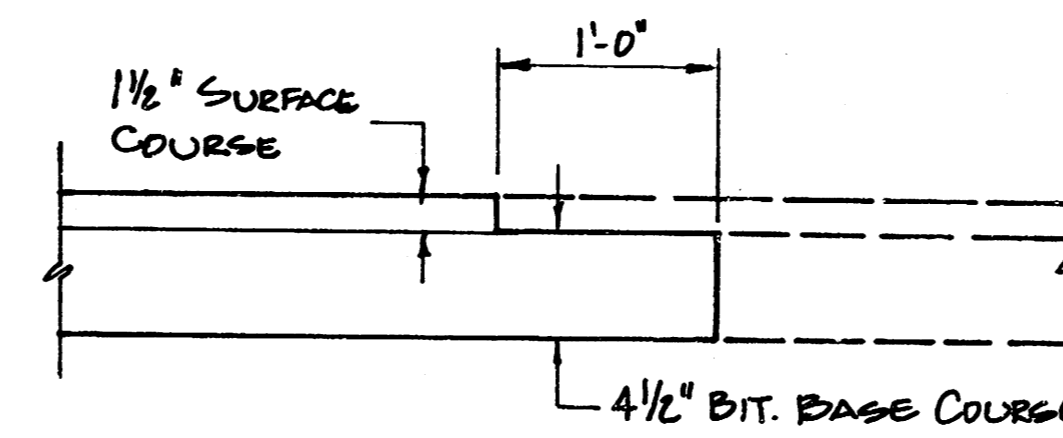
CURB AND GUTTER CORNER DETAIL

NOTE: TRAFFIC ENGINEERING DIVISION OF THE DEPARTMENT OF OPERATIONS & MAINTENANCE WILL FURNISH AND INSTALL PARKING METER POSTS AND PARKING METERS. CONTRACTOR WILL BE REQUIRED TO COORDINATE HIS WORK WITH SAID DIVISION SUCH THAT INSTALLATION OF POSTS WILL BE COMPLETED PRIOR TO CONSTRUCTION OF SIDEWALK.



PARKING METER POST DETAIL

NOTE: PARKING METER POSTS TO BE FURNISHED & INSTALLED BY "OTHERS".



TRANSVERSE JOINT DETAIL

NOTE: A TACK COAT OF EMULSIFIED ASPHALT (SC-1H OR CS-1H) SHALL BE APPLIED AT AN APPROXIMATE RATE OF 0.05 GALLONS PER SQUARE YARD BETWEEN EACH LIFT OF ASPHALTIC MATERIAL. JOINTS IN ASPHALTIC LIFTS SHALL BE STAGGERED A DISTANCE OF 1'-0" FROM JOINTS IN PRECEDING LIFTS.

**PARKING LOT DETAILS
CENTURY II EXHIBITION CENTER
PHASE 2
CITY OF WICHITA, KS**

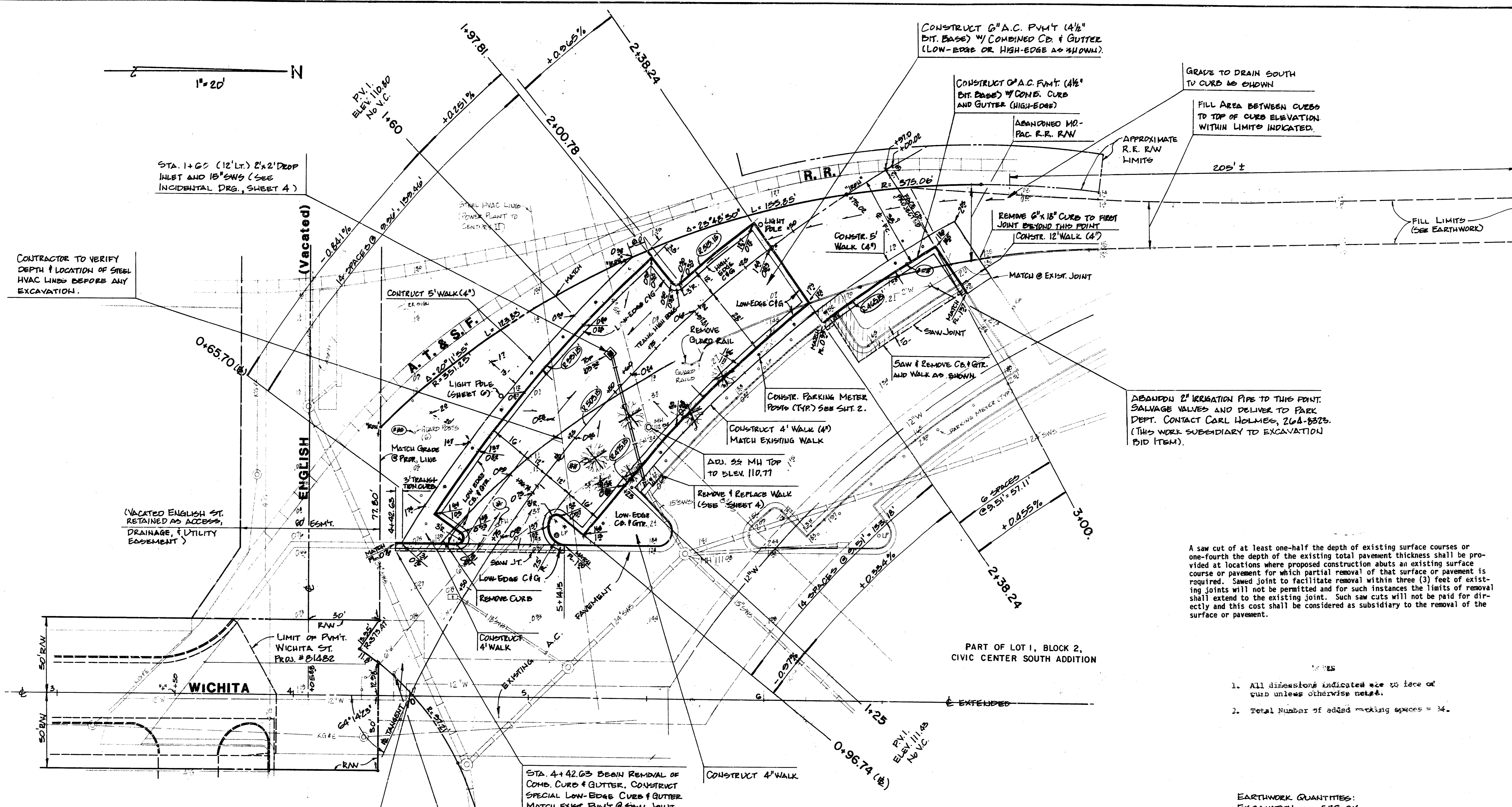
472-78-245-81501-000-000-001

BAUGHMAN COMPANY, P.A.
SURVEYING & ENGINEERING
316-262-7271 • 300 LAURA • WICHITA, KANSAS 67211

NO SCALE

2/7

2/7



STA. 1+60 (12' LT.) 2'x2' DROP INLET AND 18" SWS (SEE INCIDENTAL DRG., SHEET 4)

CONTRACTOR TO VERIFY DEPTH & LOCATION OF STEEL HVAC LINES BEFORE ANY EXCAVATION.

(VACATED ENGLISH ST. RETAINED AS ACCESS, DRAINAGE, & UTILITY EASEMENT)

LIMIT OF PAVT. WICHITA ST. PROJ. #B1482

STA. 4+42.63 BEGIN REMOVAL OF COMB. CURB & GUTTER. CONSTRUCT SPECIAL LOW-EDGE CURB & GUTTER MATCH EXIST. PAVT. @ SAW JOINT.

CONSTRUCT 6" A.C. PAVT (1 1/2" BIT. BASE) 1/4" COMBINED CURB & GUTTER (LOW-EDGE OR HIGH-EDGE AS SHOWN).

CONSTRUCT 6" A.C. PAVT (1 1/2" BIT. BASE) 1/4" COMB. CURB AND GUTTER (HIGH-EDGE)

GRADE TO DRAIN SOUTH TO CURB AS SHOWN

FILL AREA BETWEEN CURBS TO TOP OF CURB ELEVATION WITHIN LIMITS INDICATED.

REMOVE 6" x 18" CURB TO FIRST JOINT BEYOND THIS POINT

ABANDON 2" IRRIGATION PIPE TO THIS POINT. SALVAGE VALVES AND DELIVER TO PARK DEPT. CONTACT CARL HOLMES, 264-8823. (THIS WORK SUBSIDIARY TO EXCAVATION BID ITEM).

A saw cut of at least one-half the depth of existing surface courses or one-fourth the depth of the existing total pavement thickness shall be provided at locations where proposed construction abuts an existing surface course or pavement for which partial removal of that surface or pavement is required. Sawn joint to facilitate removal within three (3) feet of existing joints will not be permitted and for such instances the limits of removal shall extend to the existing joint. Such saw cuts will not be paid for directly and this cost shall be considered as subsidiary to the removal of the surface or pavement.

- All dimensions indicated are to face of curb unless otherwise noted.
- Total Number of added marking spaces = 34.

EARTHWORK QUANTITIES:
 EXCAVATION 5.97 C.Y.
 +10% 0.54
 TOTAL 6.51 C.Y.
 COMPACTED FILL 10 C.Y. (90% STD. DENSITY)
 +10% 1.1
 TOTAL 11 C.Y.
 SUBGRADE STABILIZATION MANIPULATION 1156 S.Y.

PARKING LOT PLAN
 CENTURY II EXHIBITION CENTER
 PHASE 2
 CITY OF WICHITA, KS

472-76-245-81501-000-000-001

BAUGHMAN COMPANY, P.A.
 SURVEYING & ENGINEERING
 316-262-7271 • 330 LAURA • WICHITA, KANSAS 67211

Δ = 34° 09' 55" R = 503.15' T = 154.02' L = 300.02' L.C. = 295.90'

STATION	ARC LENGTH	CHORD LENGTH		DEFLECTION	
		LT. CURB OFFSET	RT. CURB OFFSET	DEFLECTION	TOTAL DEFLECTION
0+00	-	-	-	-	-
0+65.70	65.70'	70.36'	8'	3° 44' 27"	5° 44' 27"
0+78	12.30'	13.97'	-	0° 31' 46"	4° 16' 13"
0+96.74	18.74'	20.29'	20.54'	1° 14' 16"	5° 30' 29"
1+25	28.26'	30.21'	20.57'	1° 56' 55"	7° 07' 02"
1+50	25'	26.79'	23.44'	1° 25' 24"	8° 32' 26"
1+75	25'	26.79'	23.44'	1° 25' 25"	9° 57' 51"
1+97.81	22.81'	24.44'	21.35'	1° 17' 55"	11° 15' 46"
2+00.78	2.97'	3.18'	24'	0° 10' 09"	11° 25' 55"
2+25	24.22'	29.15'	25.48'	1° 22' 44"	12° 48' 59"
2+30.24	15.24'	14.19'	12.41'	0° 43' 14"	13° 32' 53"
2+50	11.76'	-	11.02'	0° 40' 11"	14° 14' 04"
2+75.02	25.02'	-	23.45'	1° 25' 28"	15° 39' 32"
3+00.02	25'	-	23.45'	1° 25' 24"	17° 04' 56"

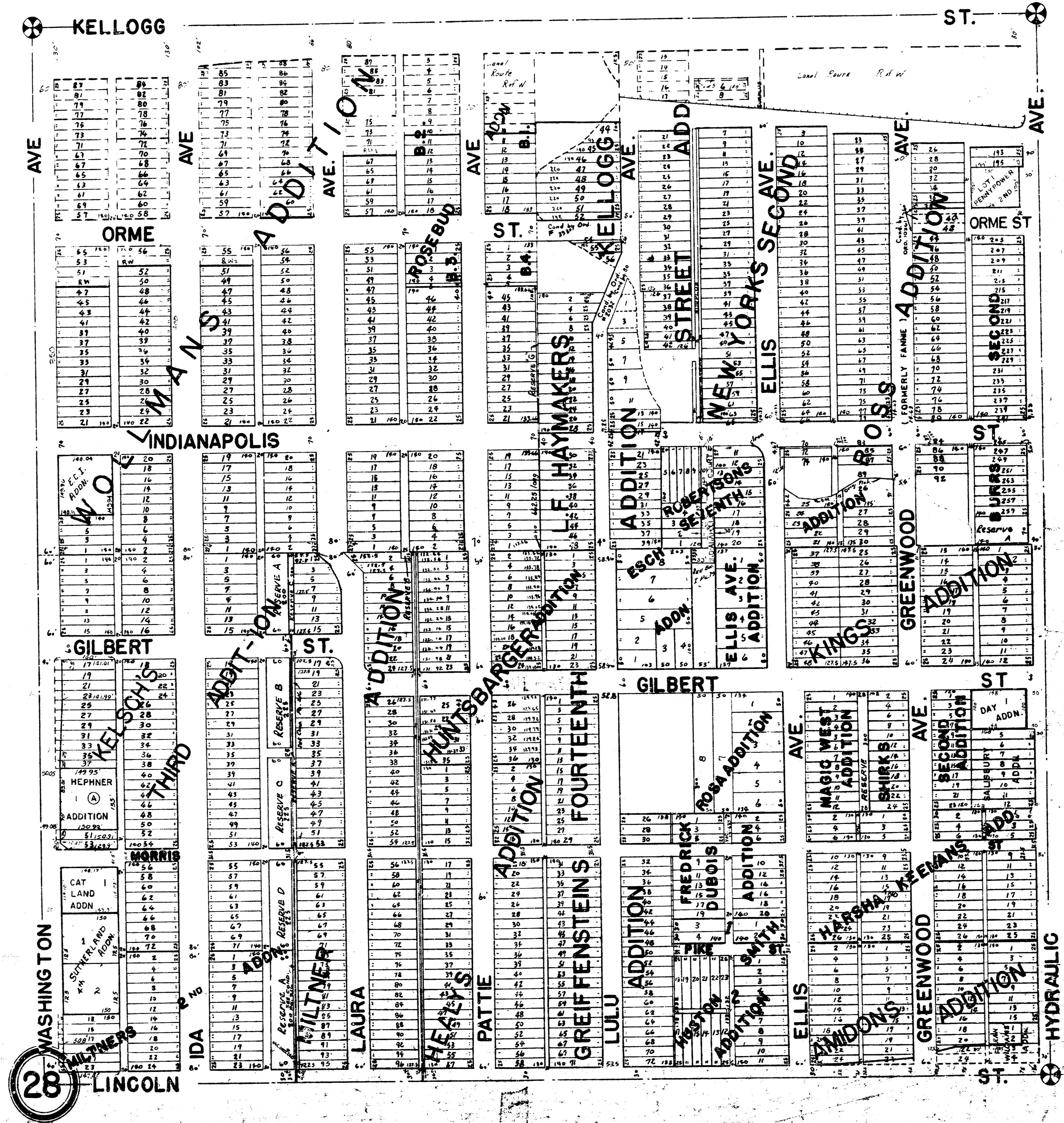
DEFLECTION / FT. = 0.056937" = 3.4162 MIL.

12" ON CURB, 66' LT. OF STA. 6+18 ON WICHITA, ELEV. 111.85
 4" IN WALK, 1.0' E. OF BACK OF WALK @ N.E. COR. SOUTHWEST TRANSFER BLDG., ELEV. 110.30
 4" IN CONC. PAVT. @ STA. 3+50 ON WICHITA ST., ELEV. 110.28

- ⊕ FIRE HYDRANT TO BE RELOCATED BY "OTHERS".
- ⊕# REMOVE (6) PINE TREES
- ⊕## REMOVE (10) WOOD GUARD POSTS

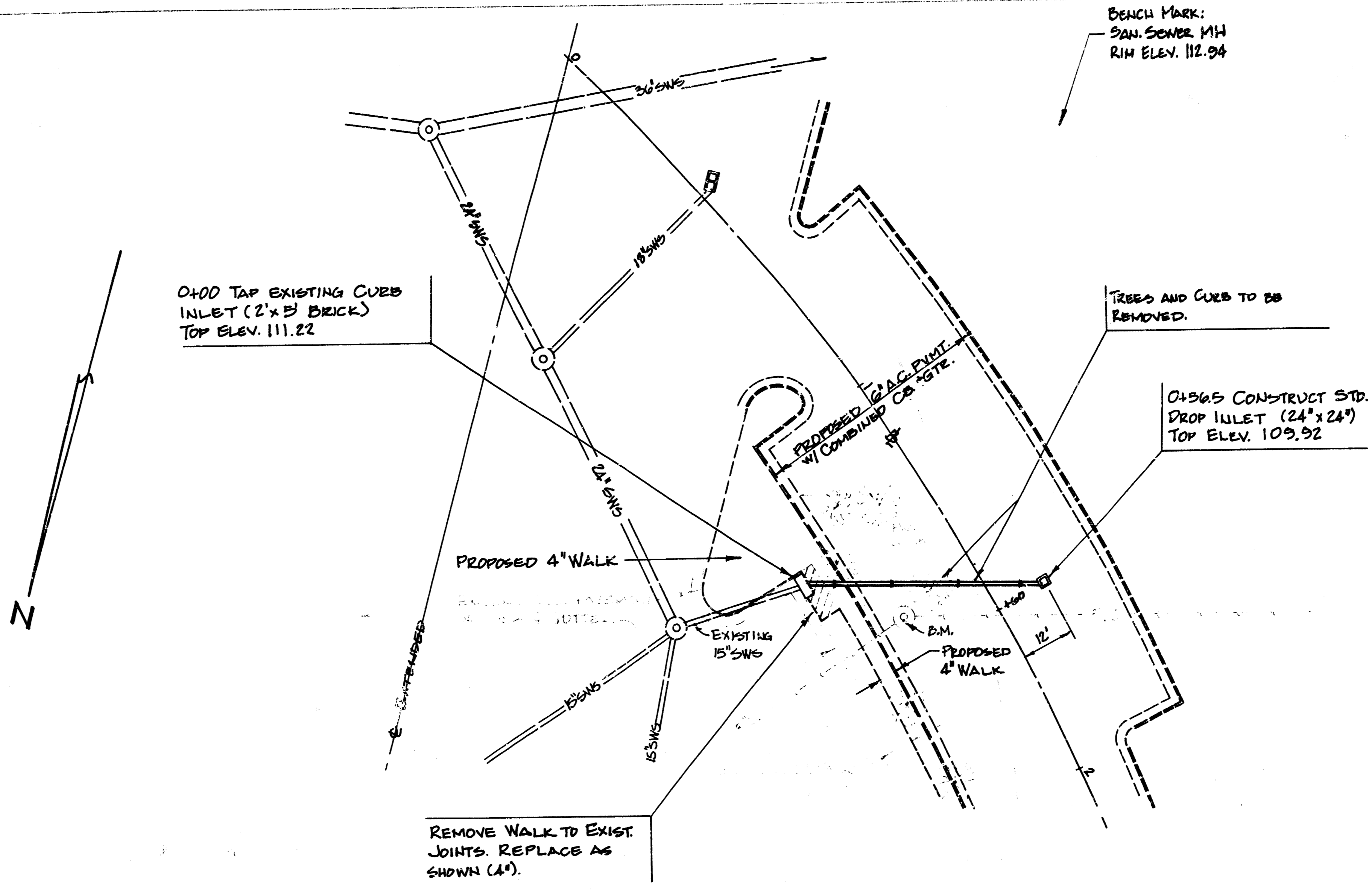
2" PVC WATER SERVICE TO BE ABANDONED. METER TO BE REMOVED BY WATER DEPT.

NE 1/4 OF SEC 28 TWP 27 S R 1 E.

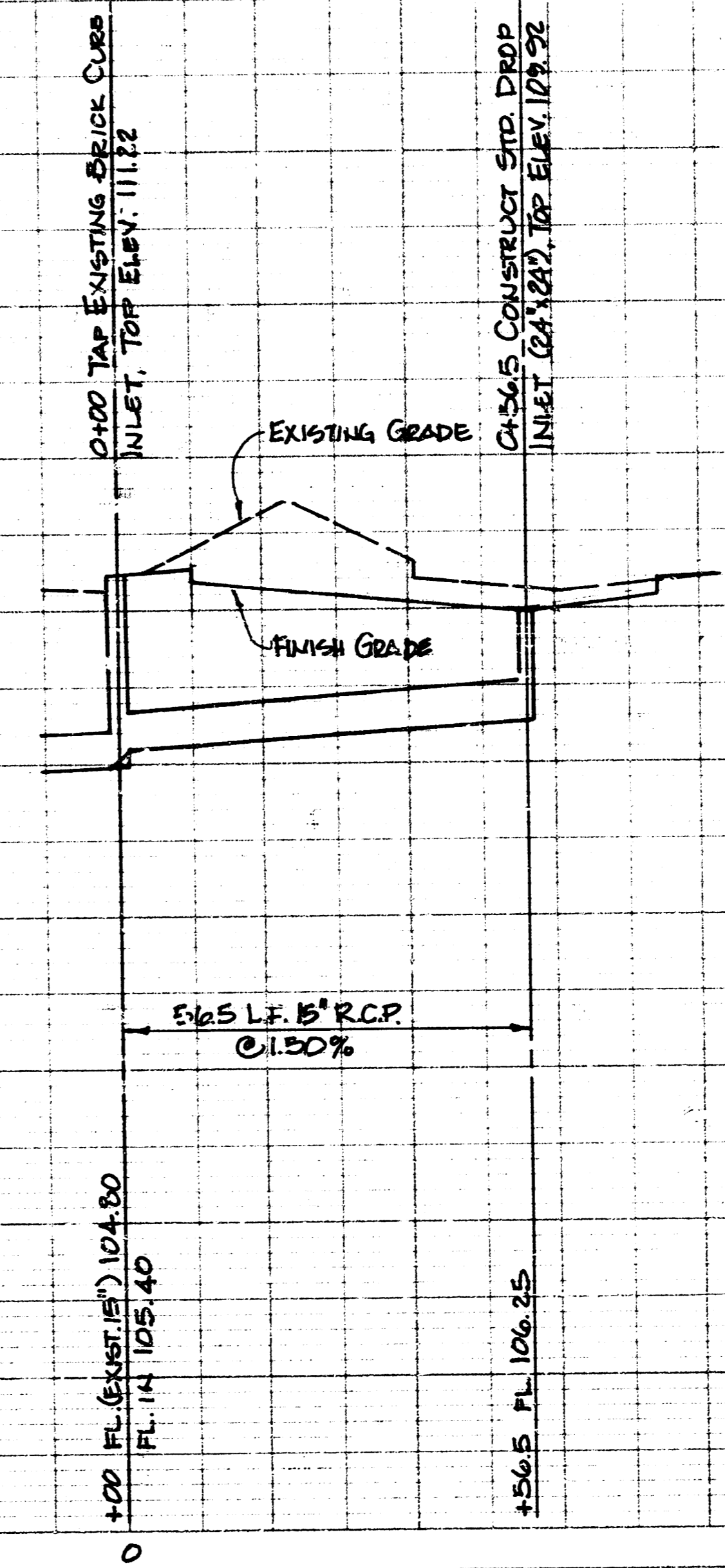


PLAN
 DRAWN BY: [unclear]
 CHECKED BY: [unclear]
 DATE: [unclear]

PROFILE
 DRAWN BY: [unclear]
 CHECKED BY: [unclear]
 DATE: [unclear]



SCALE
 PLAN 1" = 20'
 PROFILE 1" = 20' HORIZ.
 1" = 5' VERT.

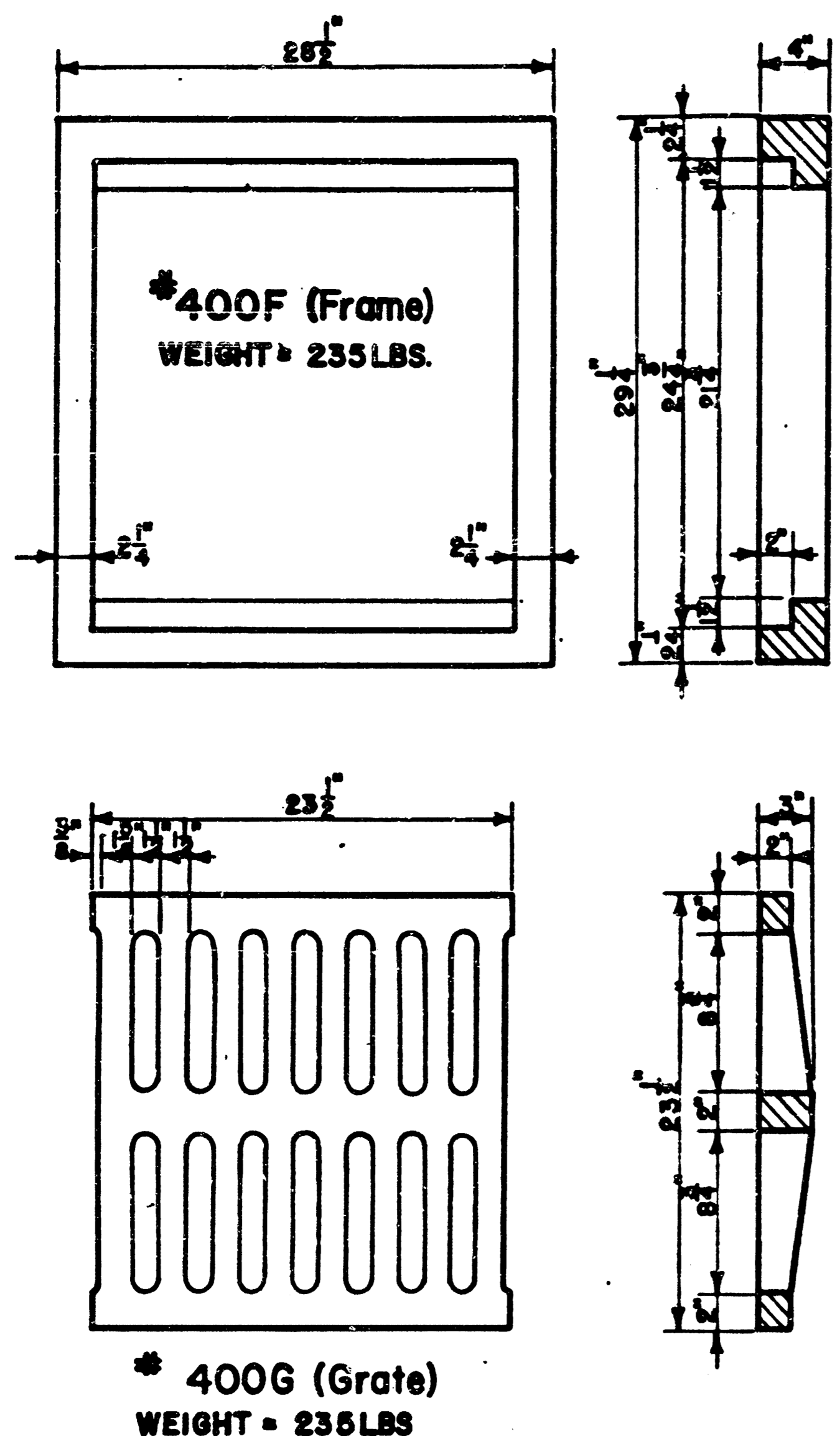


INCIDENTAL DRAINAGE
CENTURY II EXHIBITION CENTER
PHASE 2
CITY OF WICHITA, KS

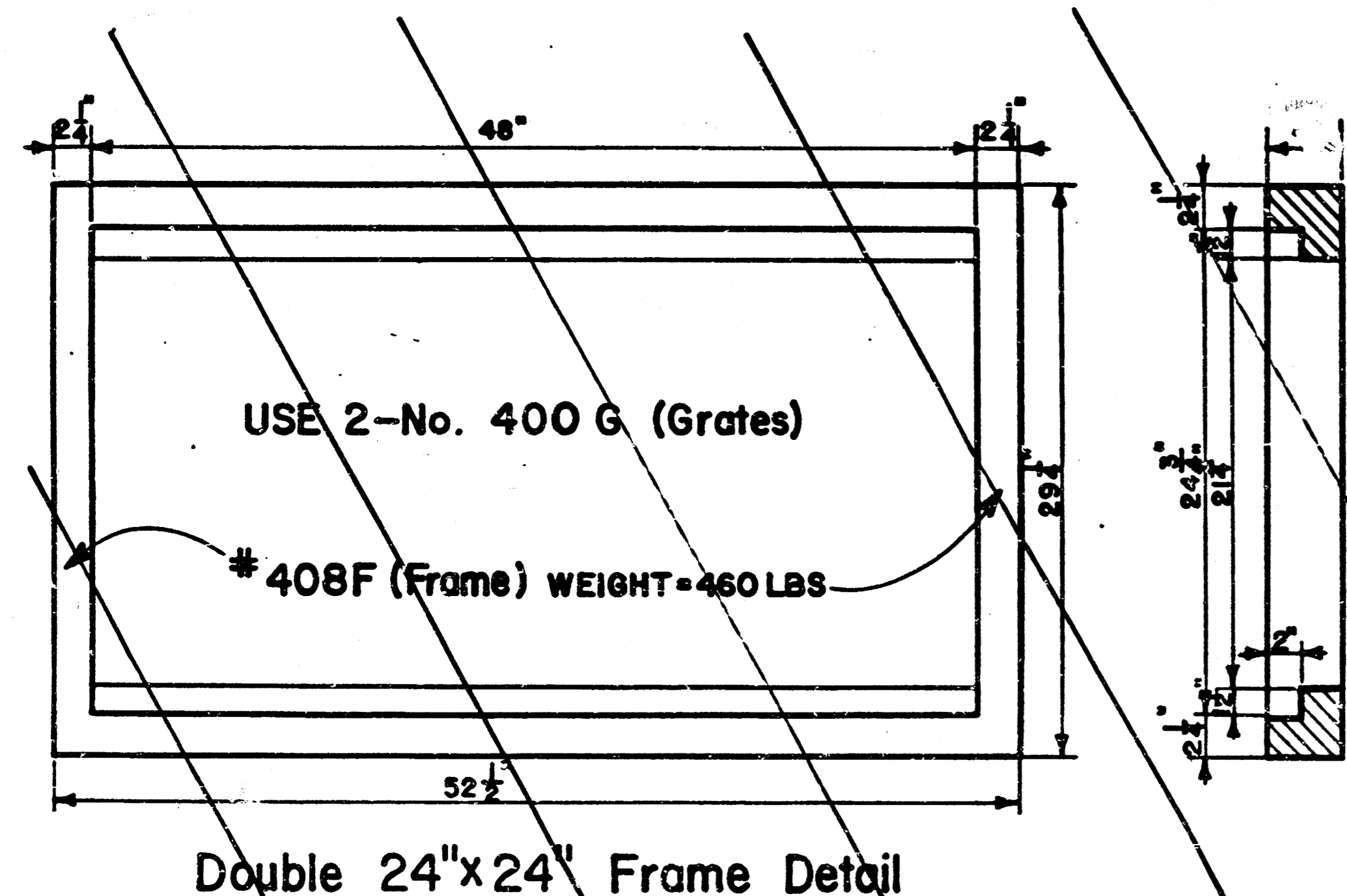
472-78-245-81501-000-000-001

BAUGHMAN COMPANY, P.A.
 SURVEYING & ENGINEERING
 316282-7271 • 530 LAURA • WICHITA, KANSAS 67211

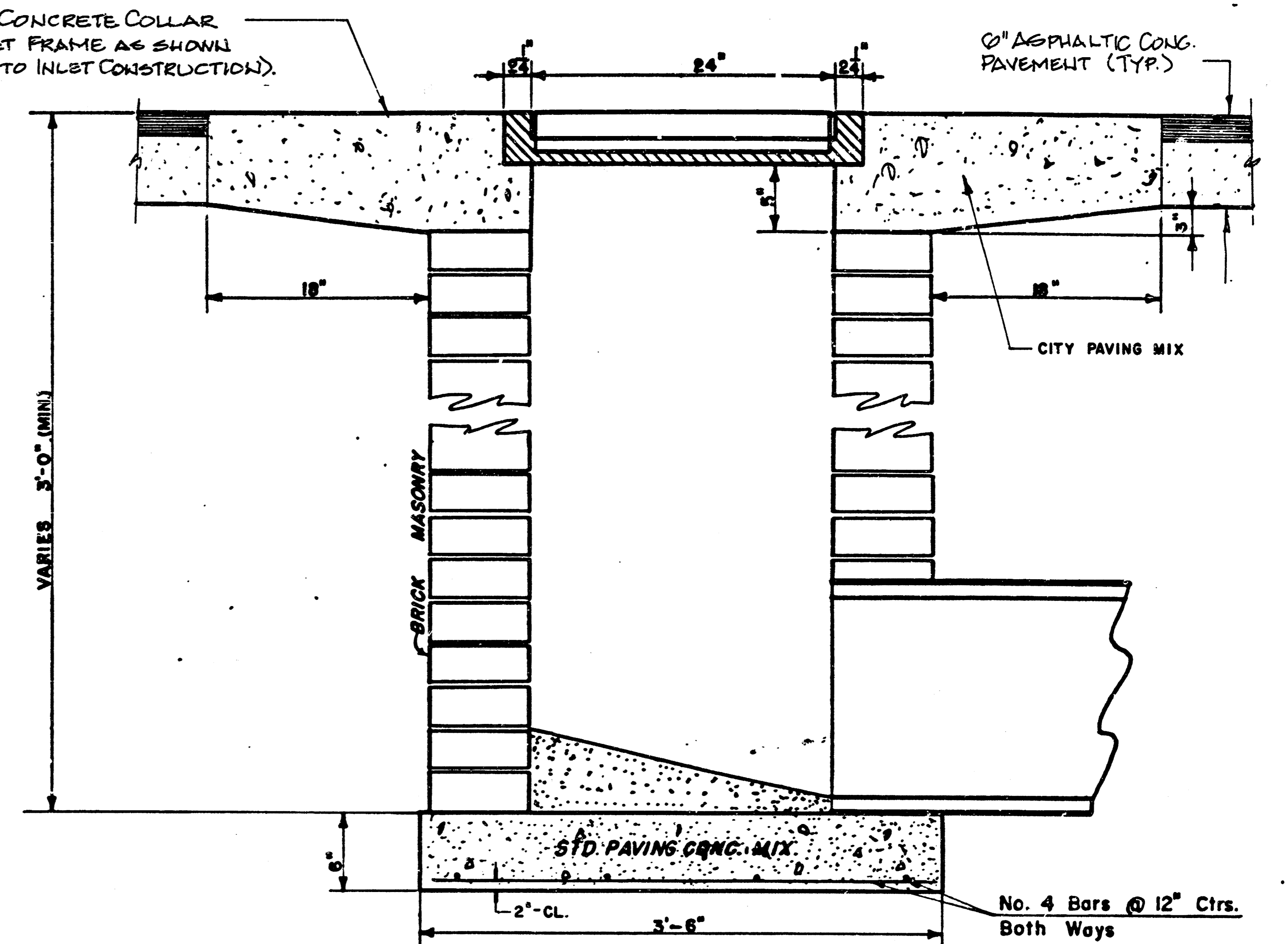
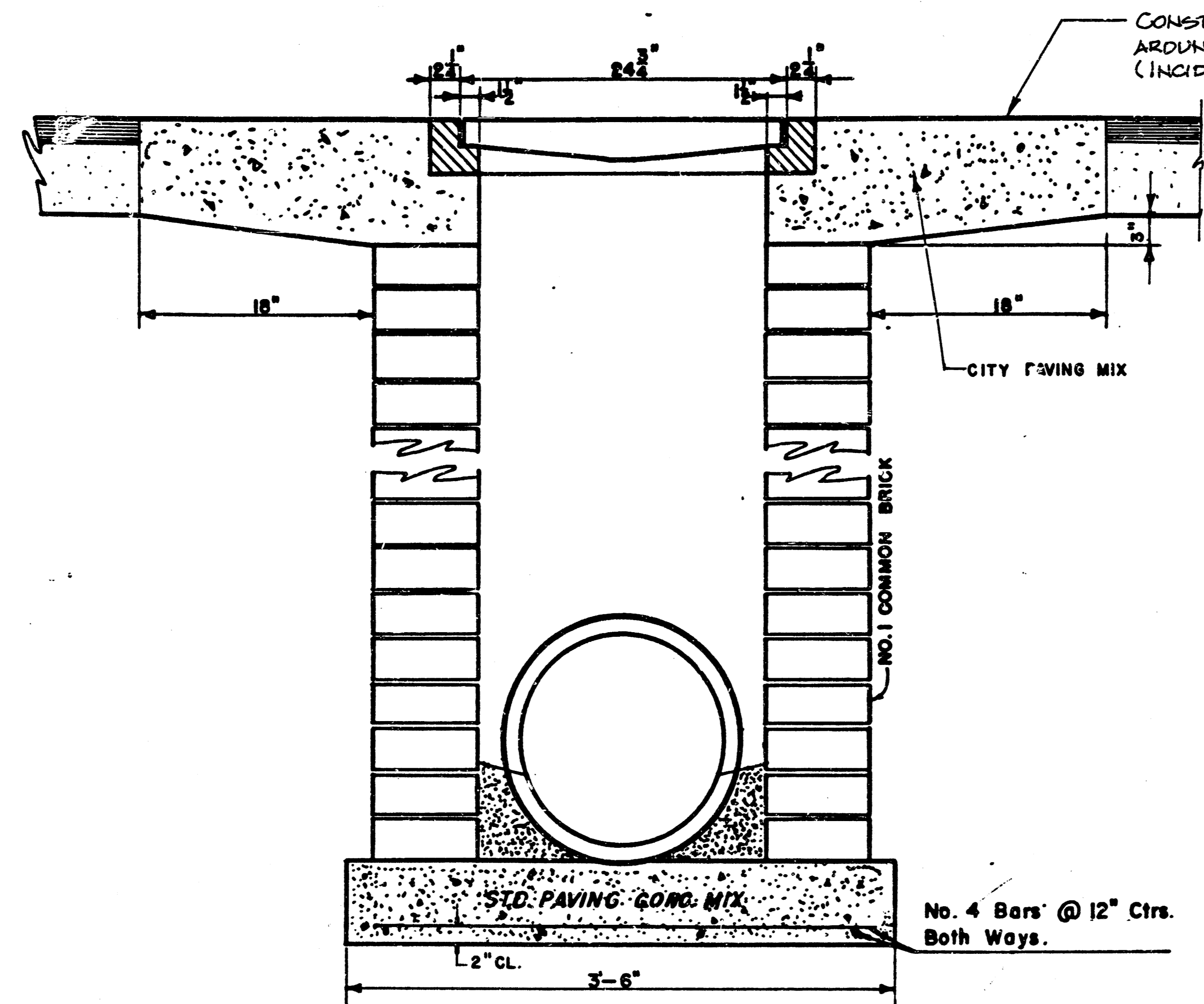
4/7



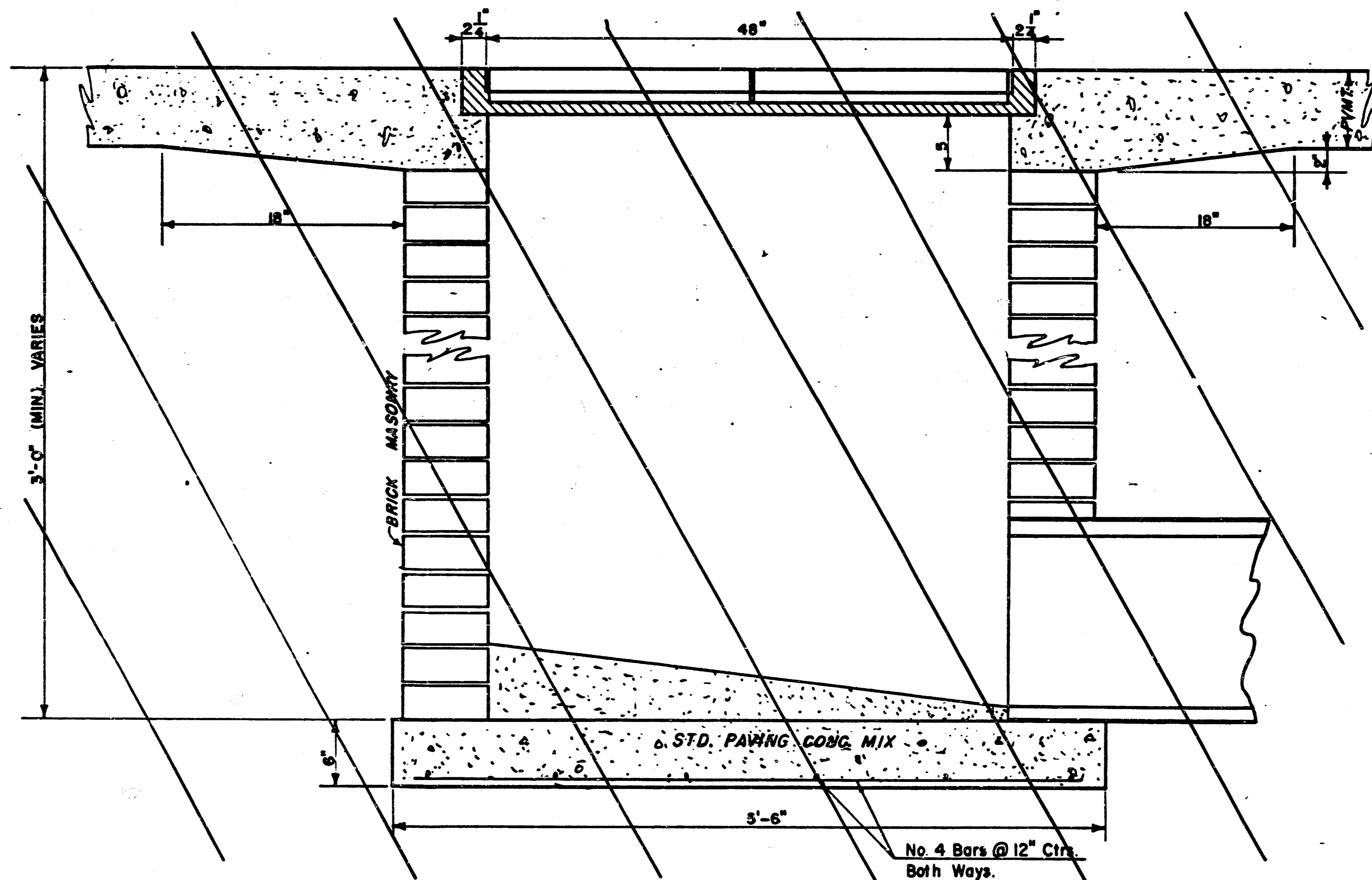
24"x24" Frame & Grate Detail



Double 24"x24" Frame Detail



NOTE: Grates shall be imprinted on the top surface with "CITY OF WICHITA" using letters at least 1" in height. Other marking methods may be used only if approved by the engineer.



DROP INLET DETAILS

M.E. Lindebak, City Engineer
 City of Wichita, Kansas
 Project
 Project No. 472-76-245-84501-000-000-001
 Date:
 Scale: 1-1/2" = 1'-0" 5/7

