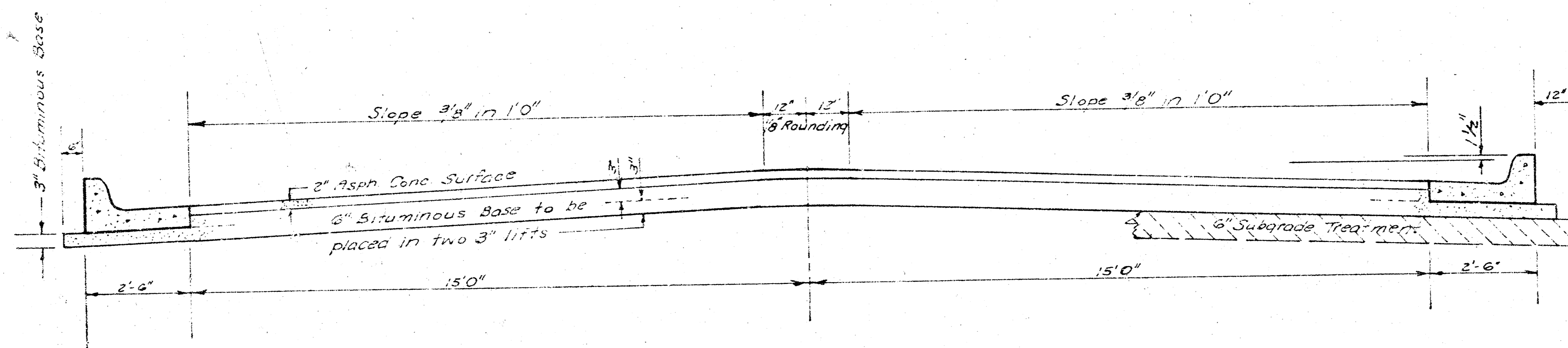


CHERYL PLACE
W.L. LOT 40, BLK. 10, WESTLINK VILLAGE 11TH ADDN
TO E.L. WOOD DRIVE



TYPICAL SECTION

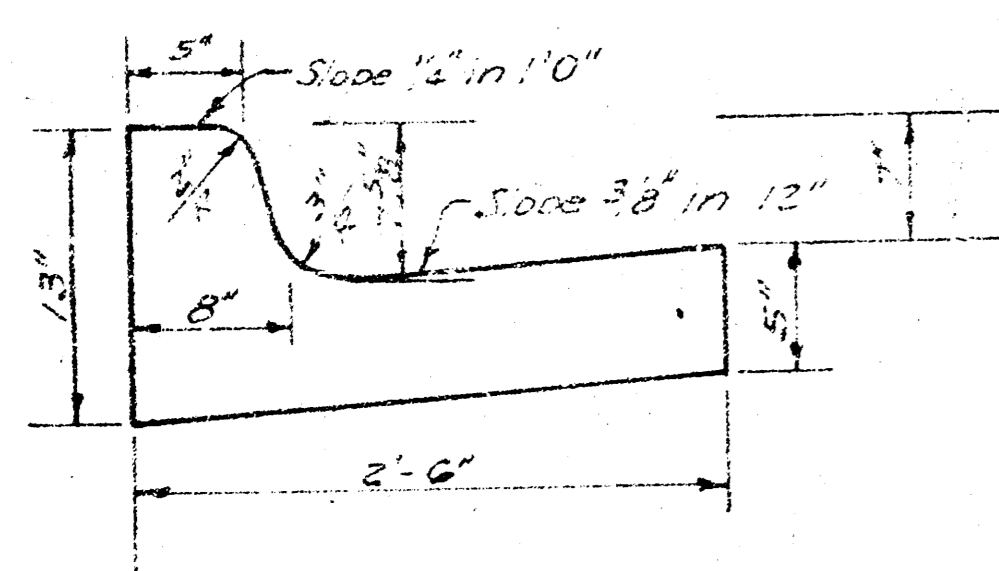
35' ASPHALTIC CONCRETE PAVEMENT WITH BITUMINOUS BASE

A TACK COAT OF EMULSIFIED ASPHALT (SS-1H) SHALL BE APPLIED AT AN APPROXIMATE RATE 0.05 GALLONS PER SQ YD BETWEEN LIFTS OF ASPHALTIC MATERIALS WHEN ORDERED BY THE ENGINEER. TACK COAT WILL NOT BE PAID FOR DIRECTLY AND SHALL BE CONSIDERED AS SUBSIDIARY TO PRICE BID FOR ASPHALTIC PAVEMENT.

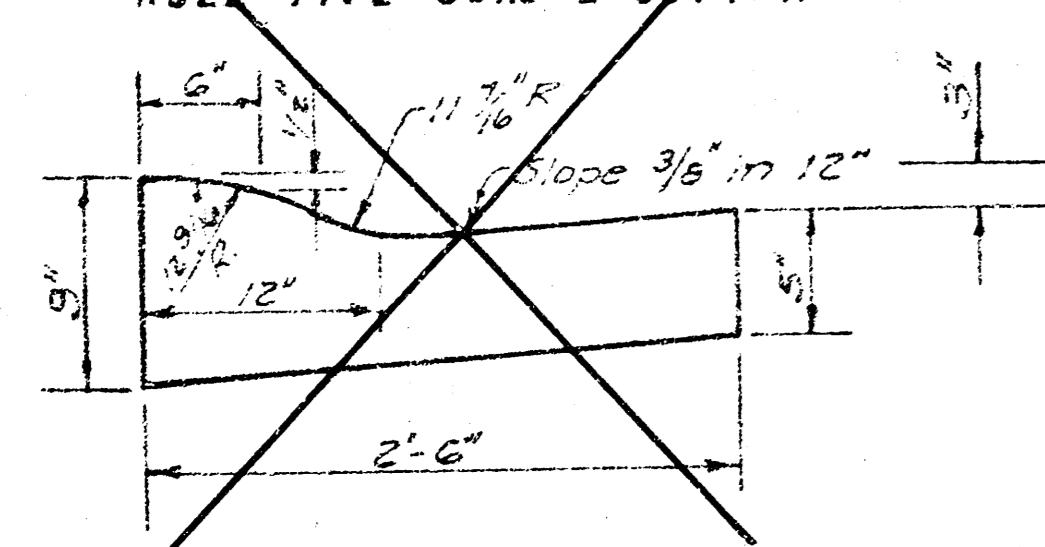
BITUMINOUS BASE AND ASPHALTIC CONCRETE WEARING SURFACE SHALL BE PLACED WITH A LAYDOWN MACHINE HAVING AUTOMATIC ELECTRONIC CONTROLS FOR CROWN AND GRADE. CONSTRUCTION JOINTS IN EACH LIFT SHALL BE STAGGERED A MINIMUM DISTANCE OF 1' WITH JOINTS IN PRECEDING LIFTS AND PLACED SUCH THAT A JOINT WILL BE CONSTRUCTED ON THE CENTERLINE IN THE TOP LIFT.

*The A.C. Pavement between the comb curb & gutter shall be paid as Sqyds. 8" A.C. Pavement (6" Bituminous Base).
 The Bituminous Base under the comb curb & gutter shall be paid as Sqyds. 3" Bituminous Base.*

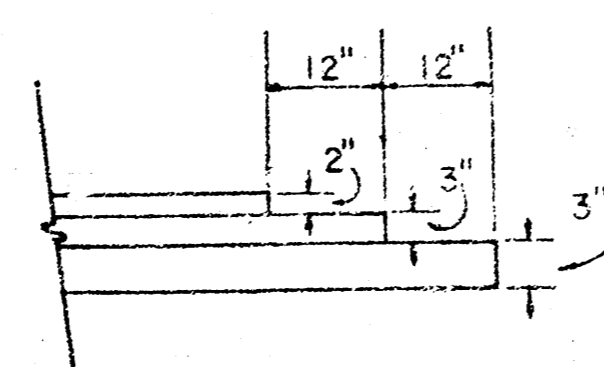
COMBINED CURB & GUTTER



ROLL TYPE CURB & GUTTER



DETAIL OF TRANSVERSE CONSTRUCTION JOINTS



TRANSVERSE CONSTRUCTION JOINTS SHALL BE CONSTRUCTED IN FLEXIBLE BASE PAVEMENTS AT LOCATIONS WHERE PAVEMENT TEMPORARILY ENDS TO FACILITATE FUTURE PAVEMENT CONSTRUCTION AS SHOWN BY DETAIL. THE COST OF CONSTRUCTING THE TRANSVERSE CONSTRUCTION JOINTS SHALL NOT BE MEASURED OR PAID FOR DIRECTLY BUT SHALL BE INCLUDED IN THE BID PRICE FOR SQUARE YARDS OF ASPHALTIC CONCRETE PAVEMENT.



CITY OF WICHITA KANSAS

DEPARTMENT of PUBLIC WORKS - Engineering Division.

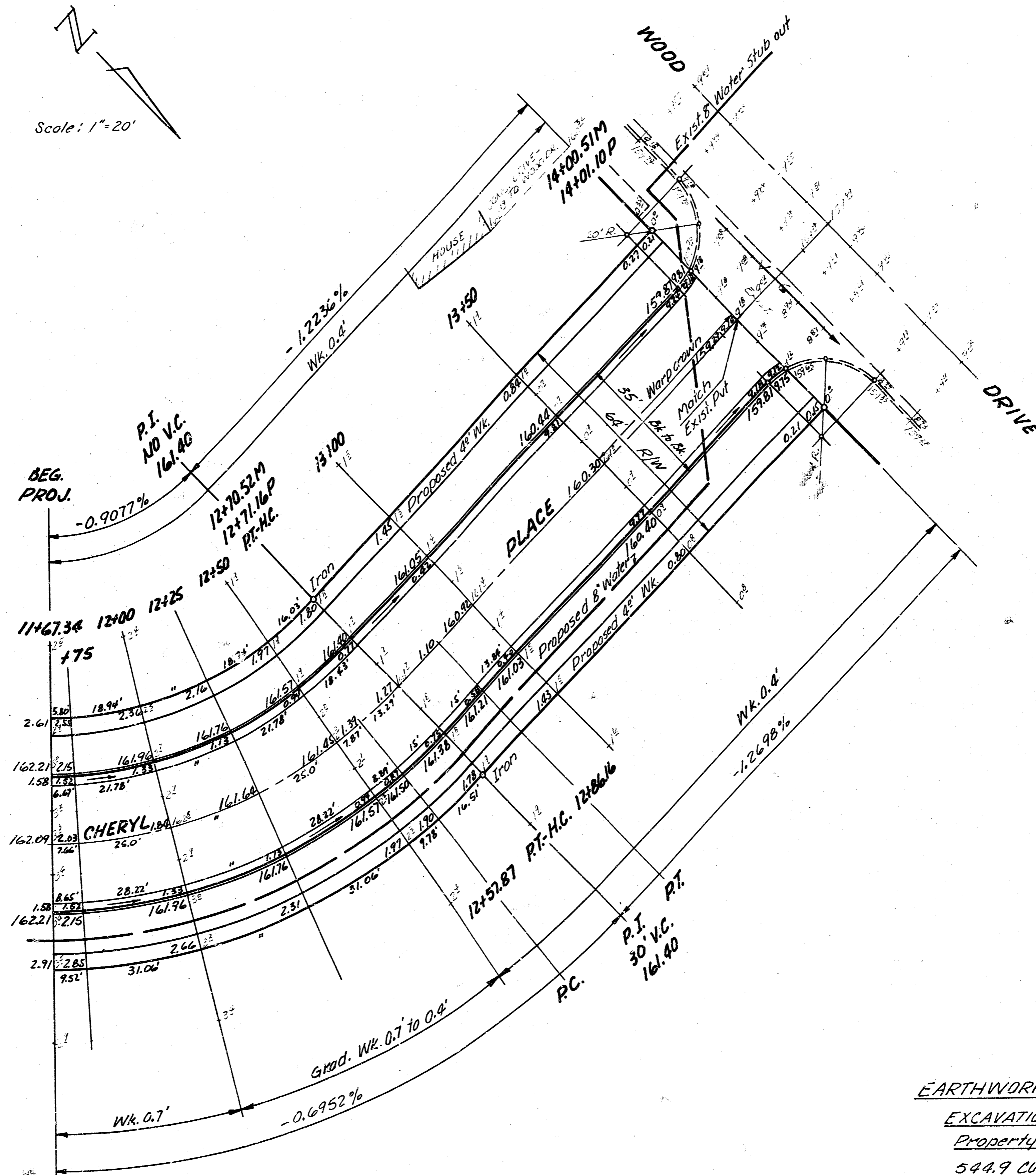
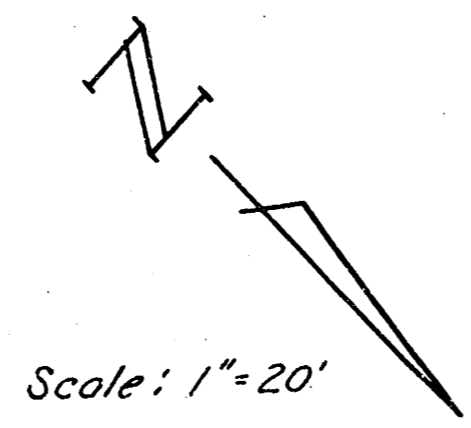
R. W. LINN CITY ENGINEER

DATE June 1976 Proj No. DAKS 574 051

FILMED FROM THE BEST AVAILABLE COPY

B.M. 158.97 N.E. Cor. Conc. Porch @ 9125 Thurman
 B.M. 157.43 "a" Top E. Cb. Wood @ N.L. Thurman
 B.M. 158.32 "a" Top E. Cb. Wood @ S.L. Cheryl

STATIONING ON E OF P.V.T.



$\Delta = 45^{\circ}08'54''$ $R = 132'$ $T = 59.76'$ $L = 103.82'$ $L.C. = 101.17'$
 CURVE DATA BASED ON Δ RAD. $\alpha = 22^{\circ}31'57''$

STA.	ARC	CHORD LENGTH	OFF SET	DEFLECTION	TOTAL DEFLECTION
1146.734				0°00'00"	0°00'00"
1147.5	7.66	6.21	9.11	1°39'45"	1°39'45"
12+00	25.0	20.24	29.69	5°25'33"	7°05'18"
12+25	25.0	20.24	29.69	5°25'33"	12°30'51"
12+50	25.0	20.24	29.69	5°25'33"	17°56'24"
12+57.87	7.87	6.38	9.36	1°42'29"	19°38'53"
12+71.16	13.29	10.77	15.80	2°53'08"	22°31'57"

DEFL. / FT. = 13.022057 MIN.

NOTE TO FIELD ENGINEER & CONTRACTOR
 Grade parking, and clear right-of-way for proposed sidewalk. Compact fill in sidewalk area. TO BE CONSTRUCTED BY "OTHERS".

SUB-GRADE
 TYPE OF SUB-GRADE TREATMENT SHALL BE DETERMINED BY THE FIELD ENGINEER. SUB-GRADE TREATMENT MAY CONSIST OF LIME TREATMENT, CEMENT TREATMENT, SUB-GRADE MODIFICATION, OR ANY COMBINATION OF THESE.

EARTHWORK - TOTAL
 EXCAVATION
 Property
 544.9 CU. YD.
 +10% 54.5
 TOTAL 599.4 CU. YD.

TOTAL MANIPULATION = 961.0 SQ. YD.

2
3

CHERYL PLACE
 M.L. LOT 40, BLK. 10, WESTLINK VILLAGE 11th ADD to E.L. WOOD DR.
 30'-2-34 ASPH. CONC.
 WITH COMB. CB. 16" GTR
 CITY OF WICHITA, KANSAS
 R.W. LINN CITY ENGINEER
 DATE June 1986 PROJ. No. DAKS 574051