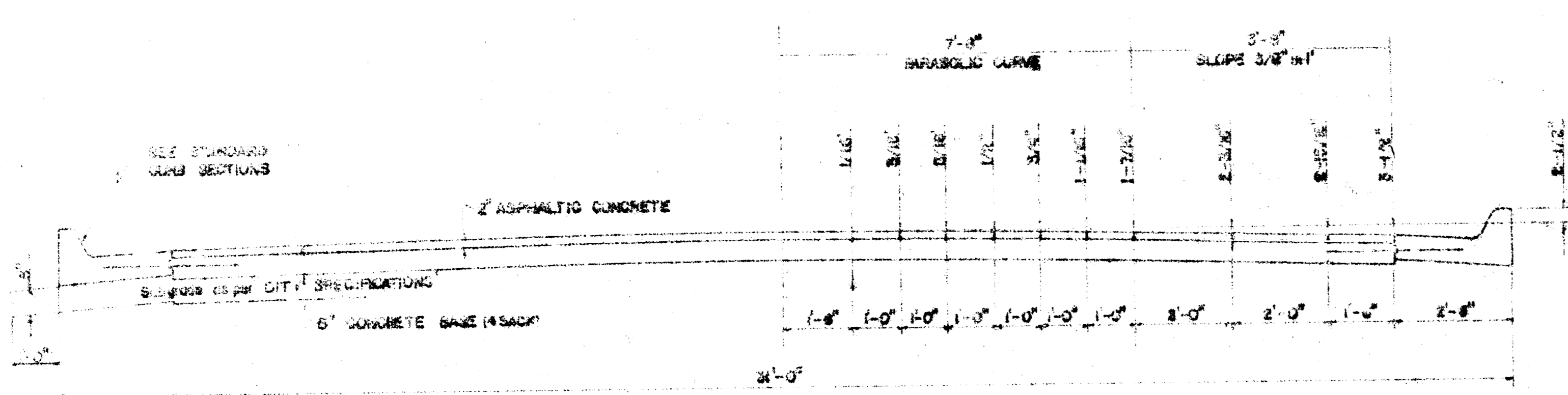
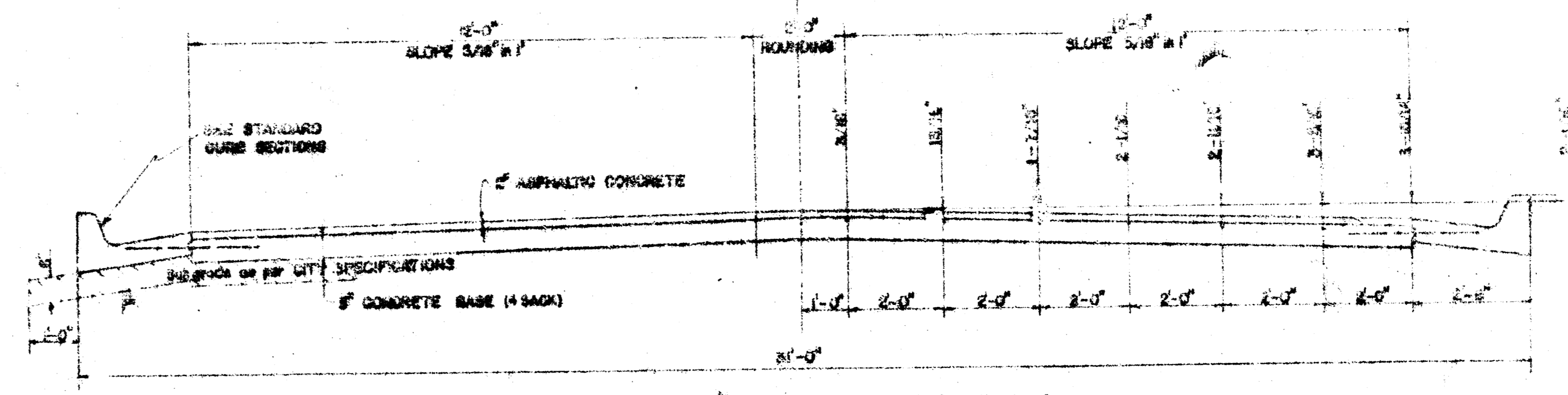


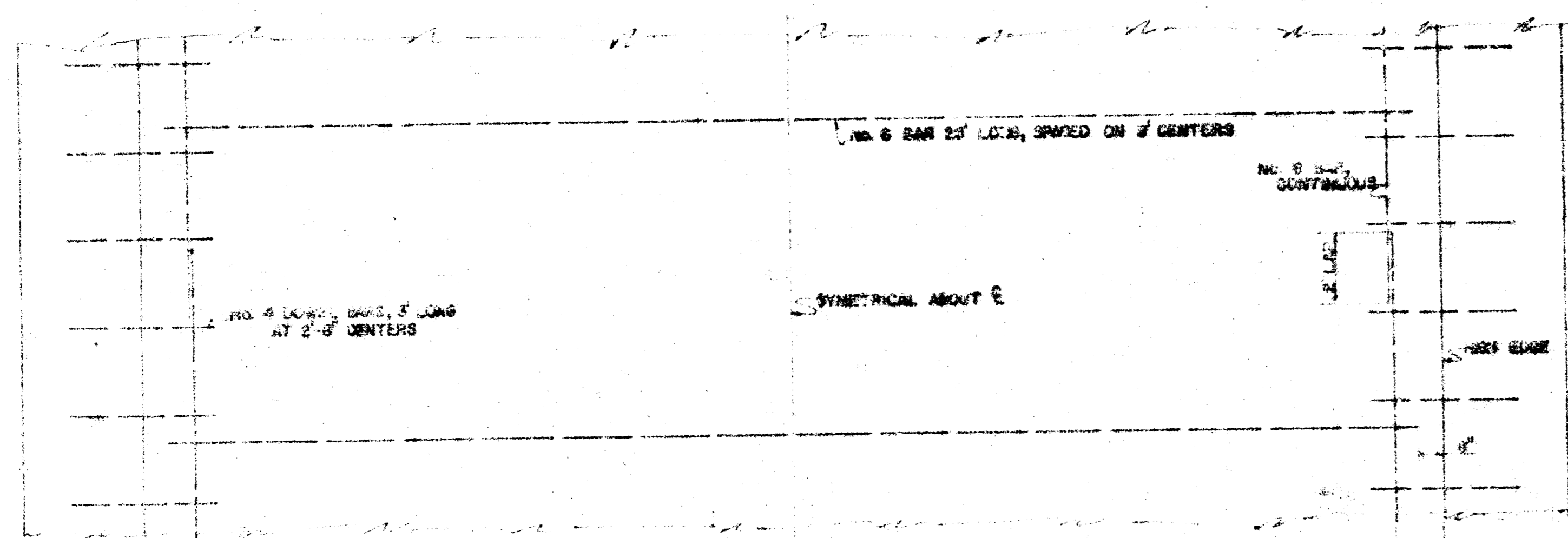
**CHIPPER LANE**  
**N.L. 12TH STREET TO S.L. BRIARWOOD AVENUE**  
**TYPICAL SECTIONS OF 30' ASPHALTIC CONCRETE PAVEMENT**



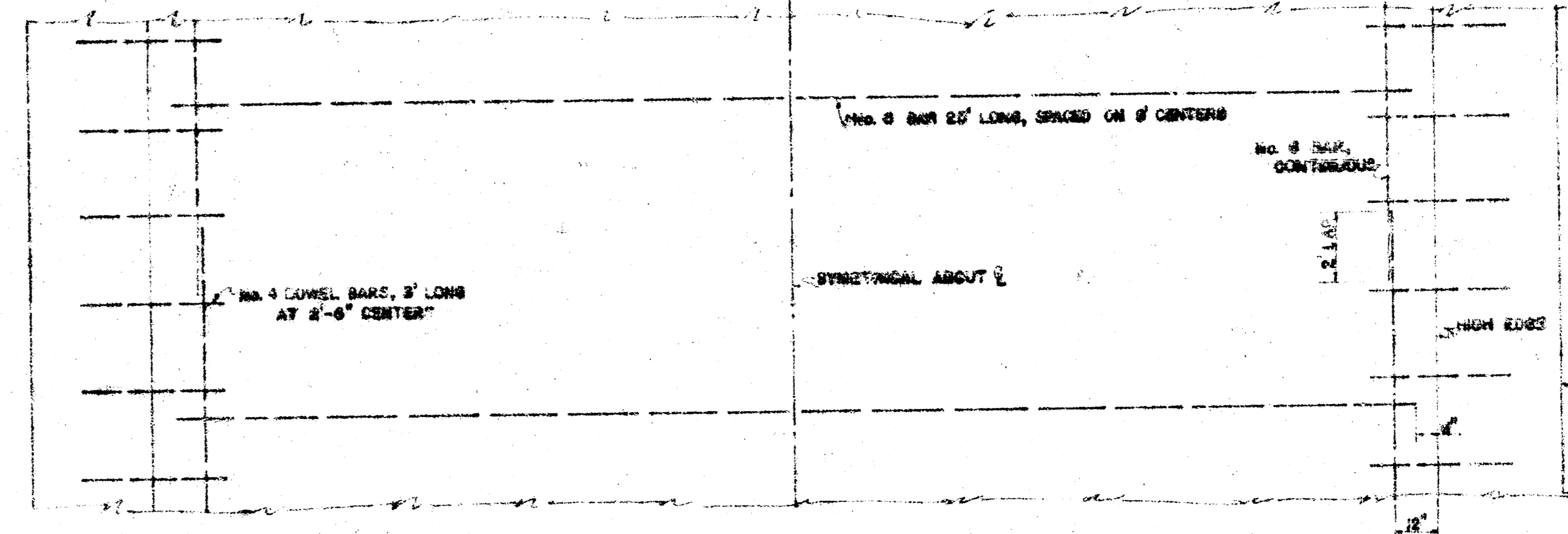
TYPICAL SECTION WITH STANDARD CROWN



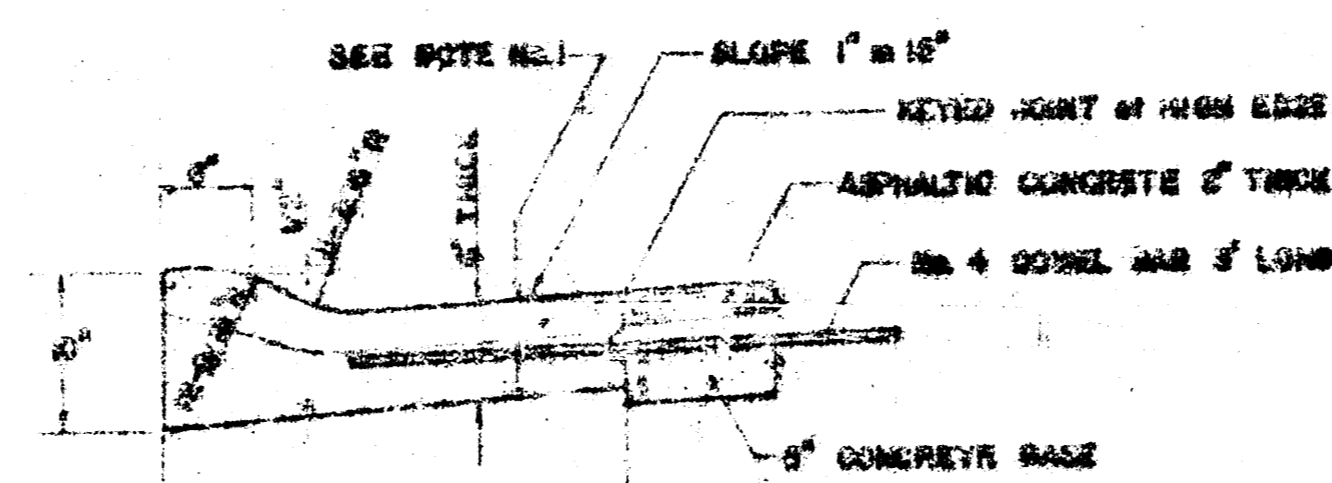
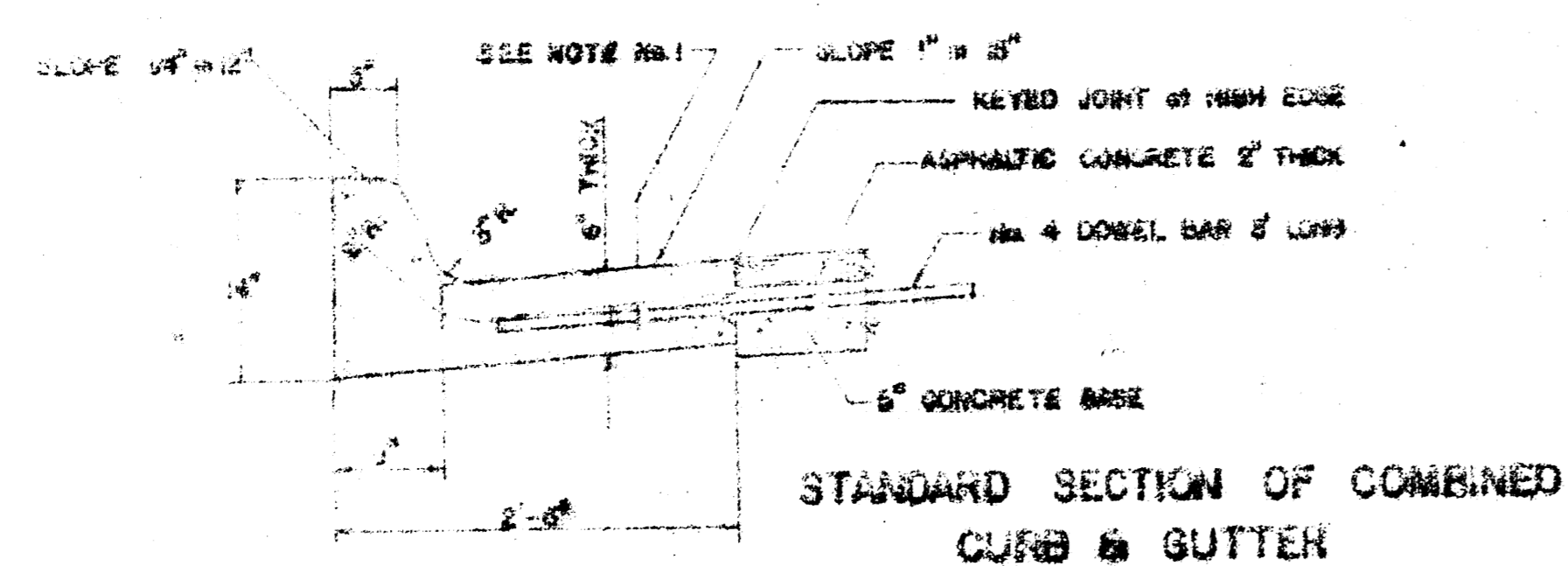
TYPICAL SECTION WITH ALTERNATE CROWN



STEEL PATTERN



STEEL PATTERN



**GENERAL NOTES:**

- CONTRACTION JOINTS MAY BE CONSTRUCTED IN UNFINISHED CURB AND GUTTER BY SAWING WITH AN RE-ROVED CONCRETE SAW. THE SAW CUT SHALL EXTEND 2'-0" BELOW THE SURFACE OF THE GUTTER AND CURB. SAWED CONTRACTION JOINTS SHALL HAVE A MAXIMUM SPACING OF 10' AND BE FILLED WITH A SPECIFIED JOINT FILLER, SUCH THAT THE JOINT IN THE BUTTER SECTION WILL BE COMPLETELY FILLED.

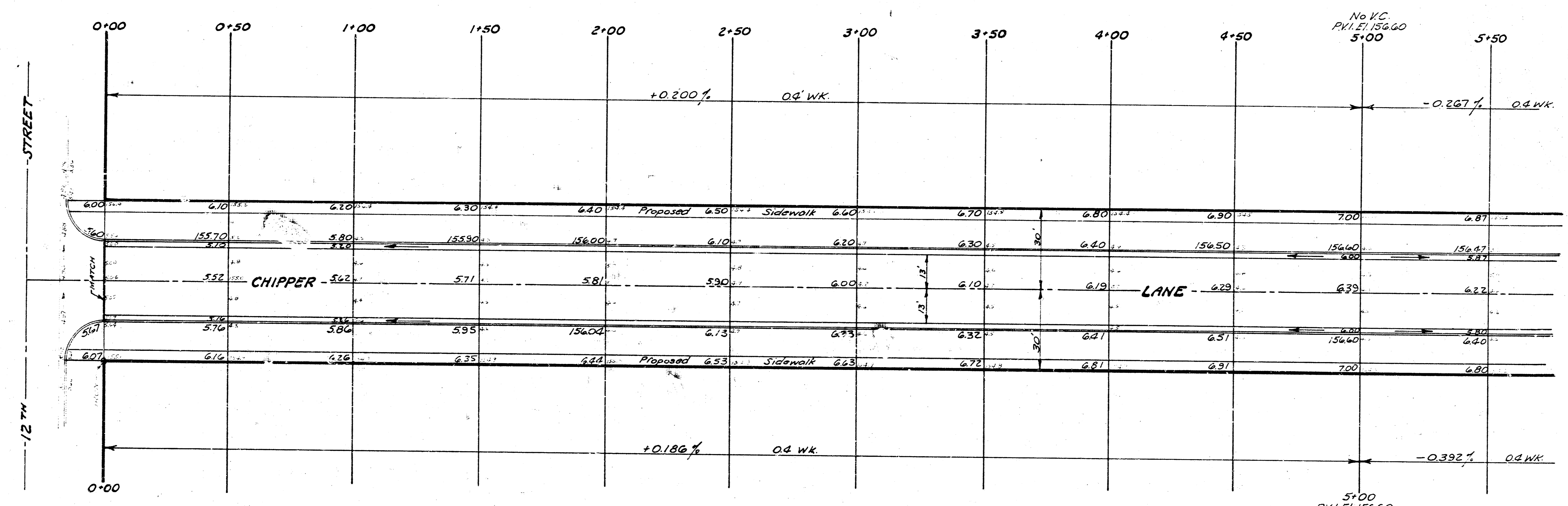
CITY OF WICHITA, KANSAS  
 Department of Public Works - Engineering Division  
 R. W. Linn City Engineer  
 Date: 9-27-71  
 Project No. DAKS 568051

1/4

Scale: 1" = 20'

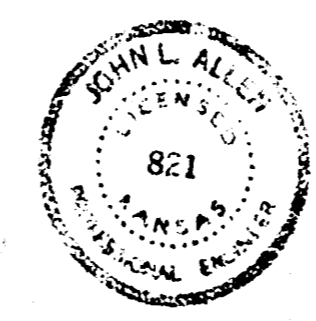
B.M. 155.65 "B" cut top curb, N. end of radius N.E. 12th & Maus Lane

B.M. 156.29 "a" cut W end of N. curb on Maus Lane N.E. Maus Lane & Chipper



PROPERTY			CITY		
EXCAVATION	COMP. FILL	BORROW EXC.	EXCAVATION	COMP. FILL	BORROW EXC.
30 Cu Yds.	1,067 Cu Yds.	2,742 Cu Yds.	3 Cu Yds.	24 Cu Yds.	41 Cu Yds.
-10%	3	107	2	4	4
<b>Totals</b>	<b>33 Cu Yds.</b>	<b>1,174 Cu Yds.</b>	<b>3 Cu Yds.</b>	<b>26 Cu Yds.</b>	<b>45 Cu Yds.</b>
Subgrade Modification		110 Cu Yds.	10 Cu Yds.		
		1,284 Cu Yds.	36 Cu Yds.		

**CHIPPER LANE**  
 FROM N.L. 12TH STREET TO  
 S.L. BRIARWOOD AVENUE  
 Asph. Conc. 26-2-30  
 R.W. LINN CITY ENGINEER  
 CITY OF WICHITA KANSAS  
 Date: 9-27-71  
 Project No. DAKS 568051



2/4

