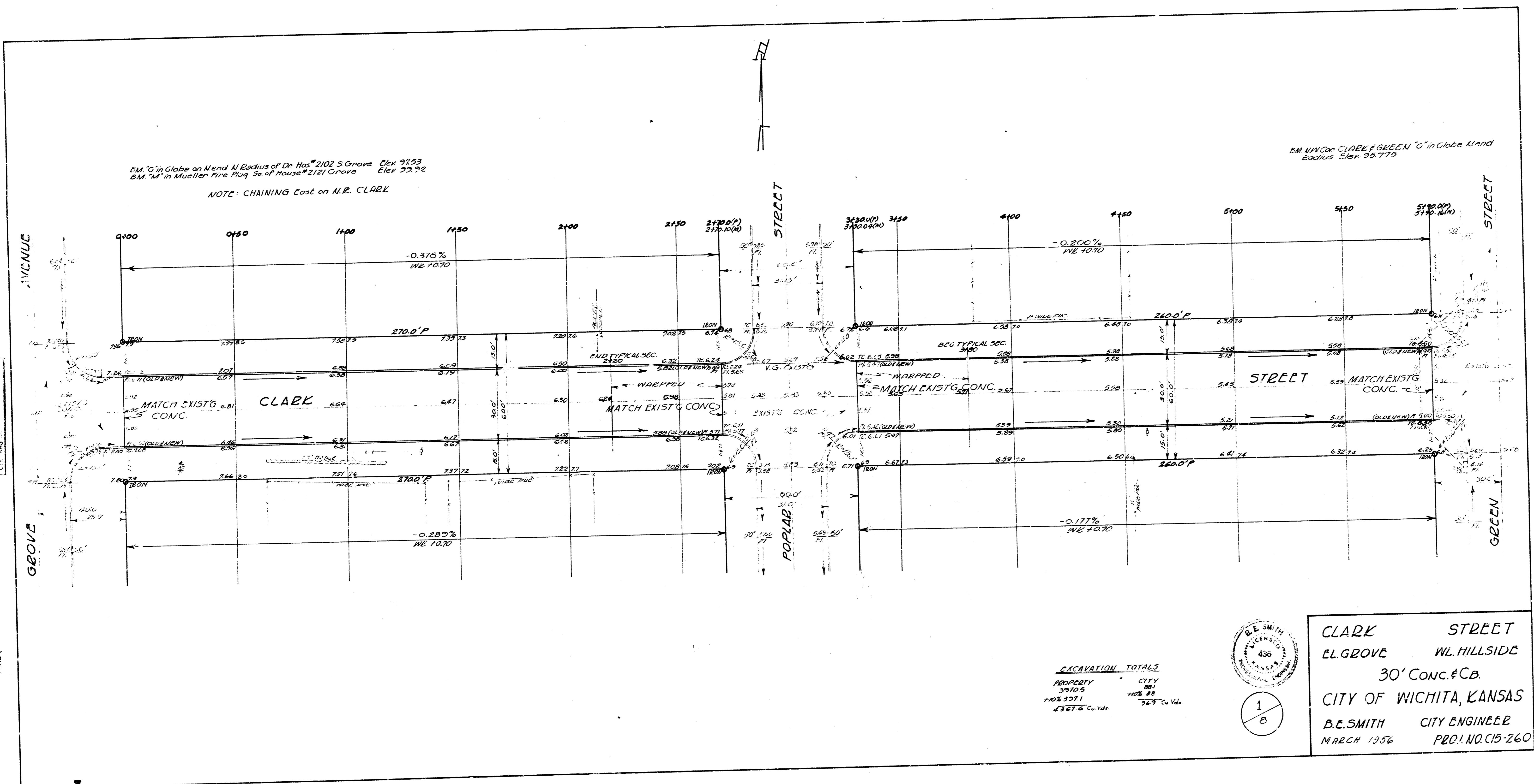
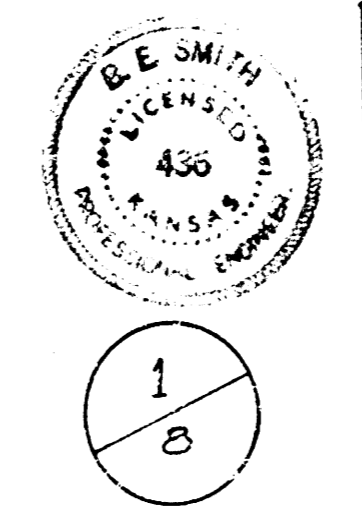


BM "G" in Globe on Mend. U. Radius of Dr. Has* 2102 S. Grove Elev. 97.53
 24" M in Mueller Pipe Plug 50' of House* 2121 Grove Elev. 99.72
 NOTE: CHAINING East on N.R. CLARK

BM WYCON CLARK & GREEN "C" in Globe Mand
 Radius Elev. 95.775



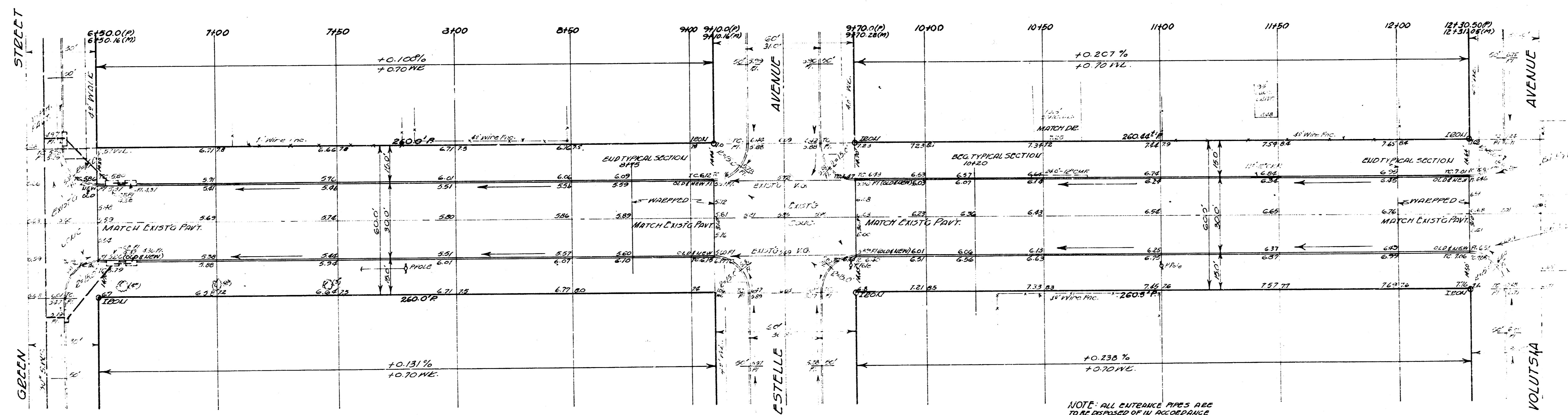
EXCAVATION TOTALS
 PROPERTY 3970.5 CITY 861
 10% 397.1 10% 86.1
 3562.4 Cu. Yd. 769 Cu. Yd.



CLARK STREET
 EL GROVE W. HILLSIDE
 30' CONC. #CB.
 CITY OF WICHITA, KANSAS
 B.E. SMITH CITY ENGINEER
 MARCH 1936 PROJ. NO. C15-260



BM Pin Point View N end Rod NW Cor CLARK & VOLUTSIA
Elev. 97.25



NOTE: ALL OUTSIDE PIPES ARE TO BE DEPOSED OF IN ACCORDANCE WITH CITY DIET CHECKS.

2/B

PROJ. NO. C15-260

