

STREETS IN COMOTARA BUSINESS PARK PROJECT NO. DAKS 574113

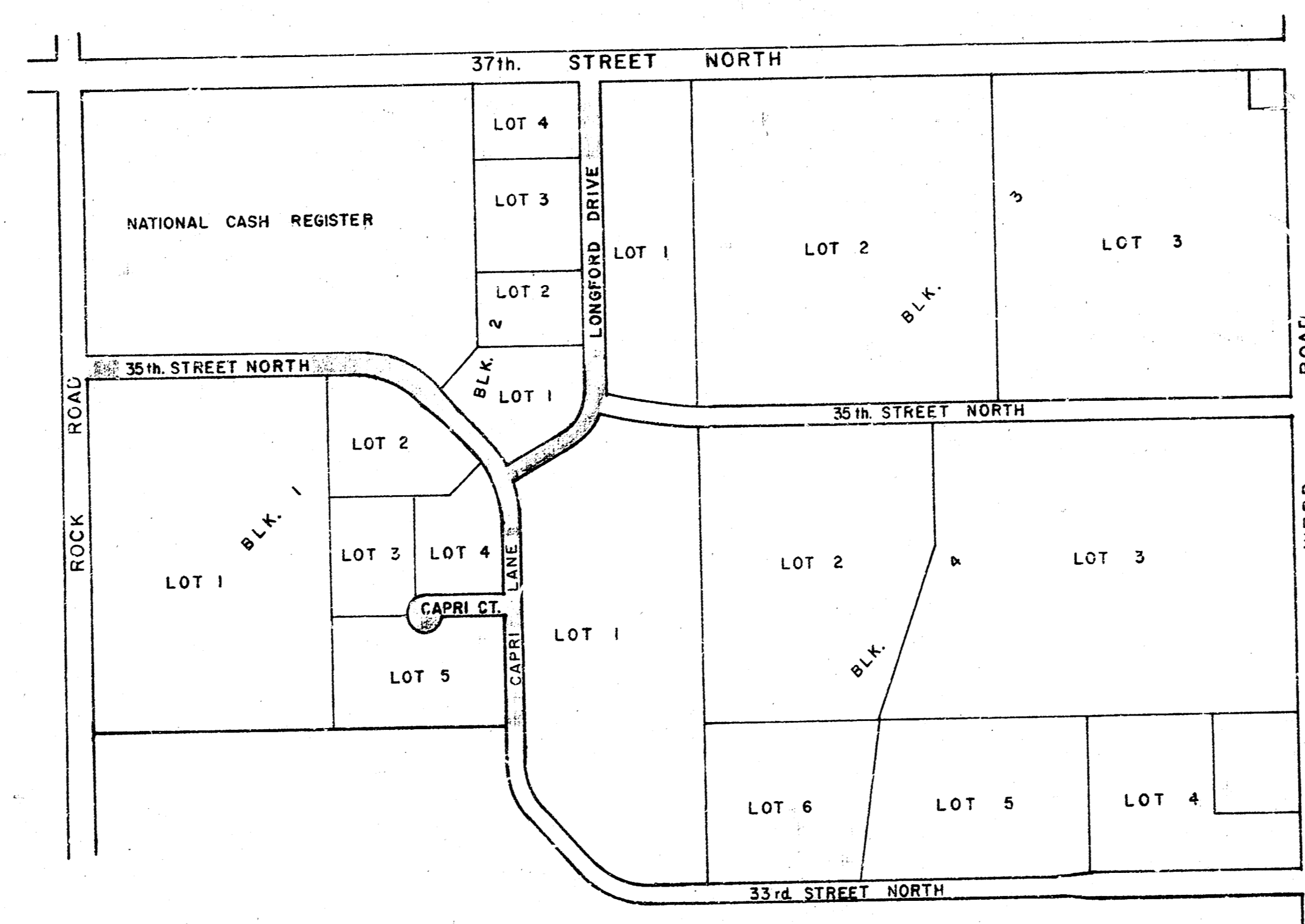
CITY OF WICHITA, KANSAS
R.W. LINN CITY ENGINEER
SEPTEMBER, 1974

35 TH STREET NORTH & CAPRI LANE - E.L. ROCK RD. TO S.L. LOT 5, BLK. 1
LONGFORD DRIVE - E.L. CAPRI LANE TO S.L. 37TH STREET NORTH
CAPRI CT. - W.L. CAPRI LANE TO & INCL. CUL-DE-SAC.

INDEX TO DRAWINGS

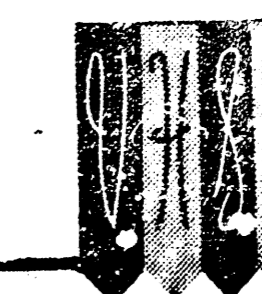
SHEET NO.	DESCRIPTION
1	TITLE SHEET
2	TYPICAL SECTIONS
3-8	PLAN PROFILE 35th STREET NORTH & CAPRI LANE
10-13	PLAN PROFILE LONGFORD DRIVE
14	PLAN PROFILE CAPRI COURT
15	INCIDENTAL DRAINAGE - DRAIN "A"
16	INCIDENTAL DRAINAGE - DRAIN "B"
17	INCIDENTAL DRAINAGE - DRAIN "B-1"
18	INCIDENTAL DRAINAGE - DRAIN "C"
19	6' x 4' RCB BOX CULVERT - STA. 14+97 - LONGFORD DR.
20	8' x 3' RCB BOX CULVERT - STA. 20+75 - CAPRI LANE
21	WASH CHECKS - TYPE 1 & 2
22	SPECIAL TYPE "A" CURB INLET
23	SPECIAL TYPE "A" COMBINED INLET MANHOLE
24-25	SEWER APPURTENANCES - MANHOLES TYPE "A" & "C"
26	CURVE STAKING INFORMATION
27-41	GRADING CROSS SECTIONS

SHEET NO. 9 & 32 DELETED



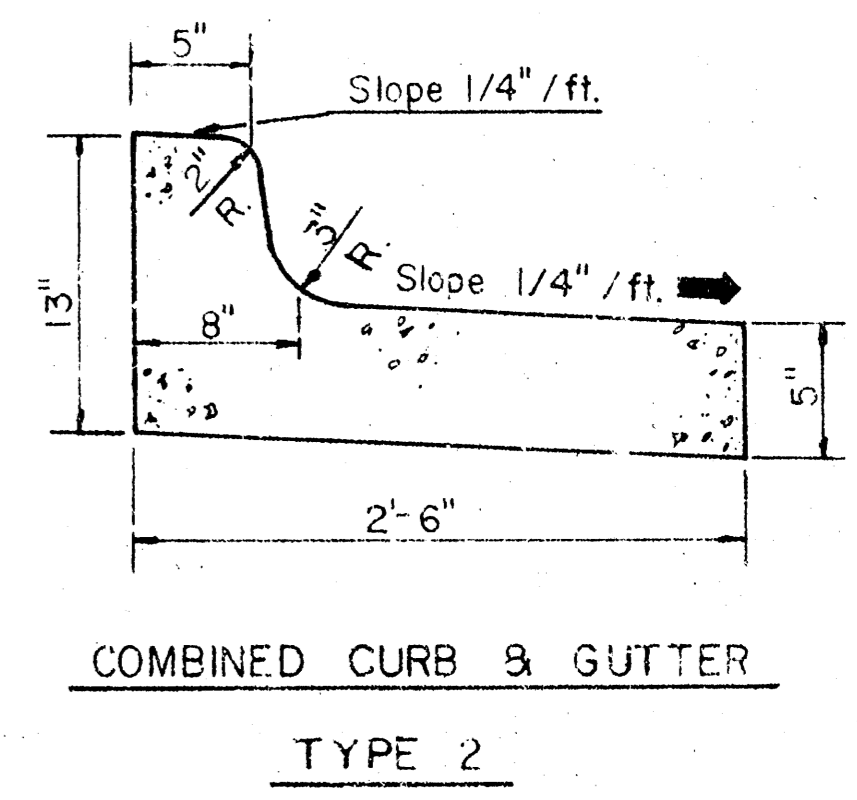
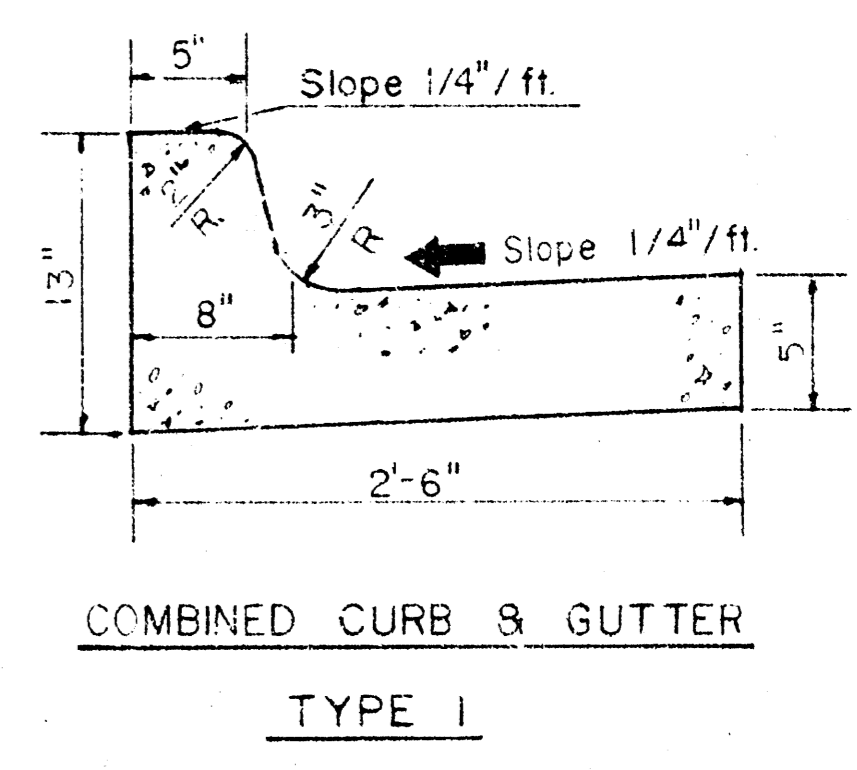
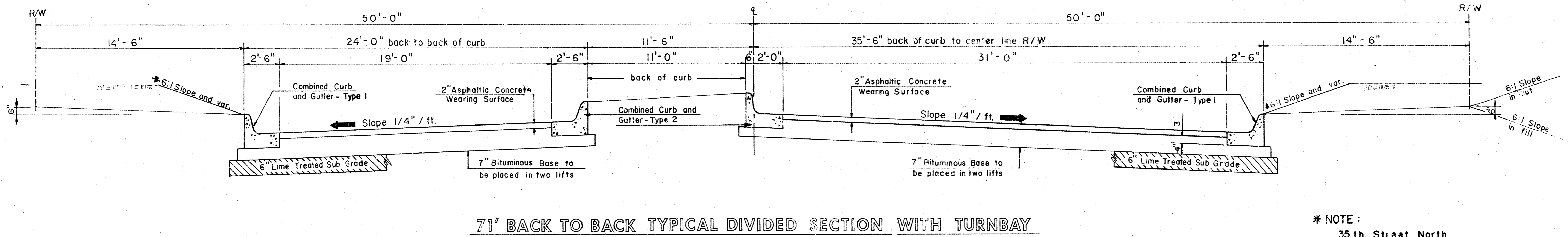
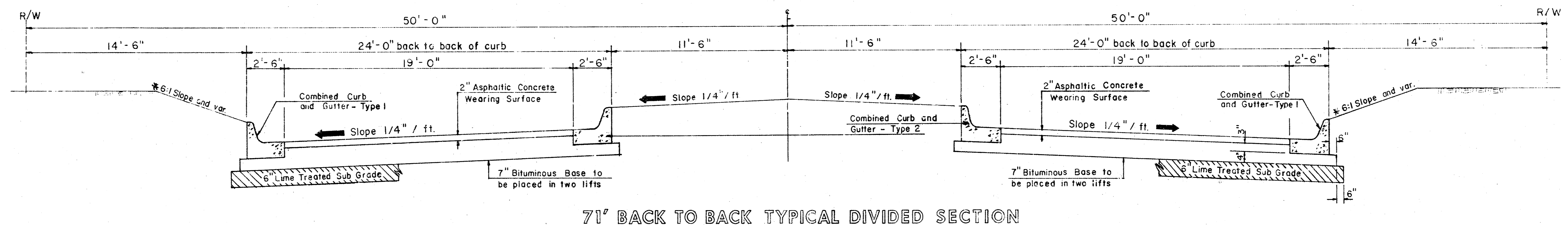
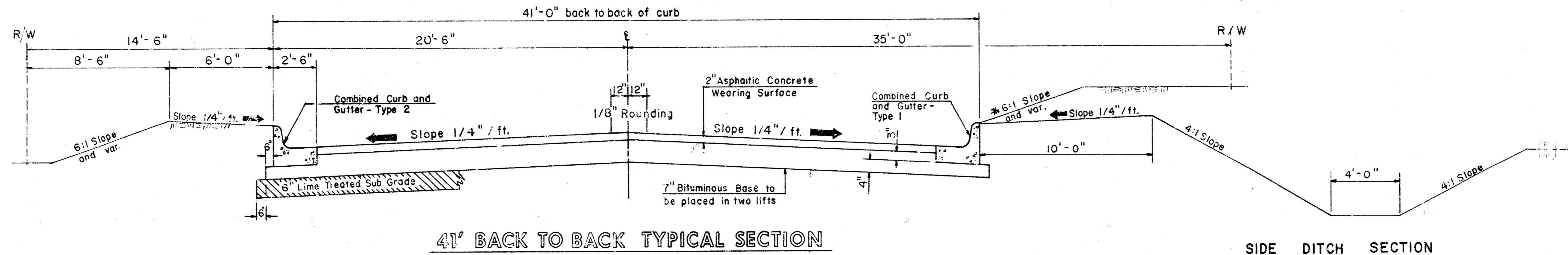
LOCATION MAP

REVISION TO PLANS 2/17/75
SHEET NOS. 1, 6, 7, 10, 14, 17, 26, 32, 36



VAN DOREN-HAZARD-STALLINGS
ENGINEERS-ARCHITECTS . . . TOPEKA, KANSAS

SHEET
1
OF 12

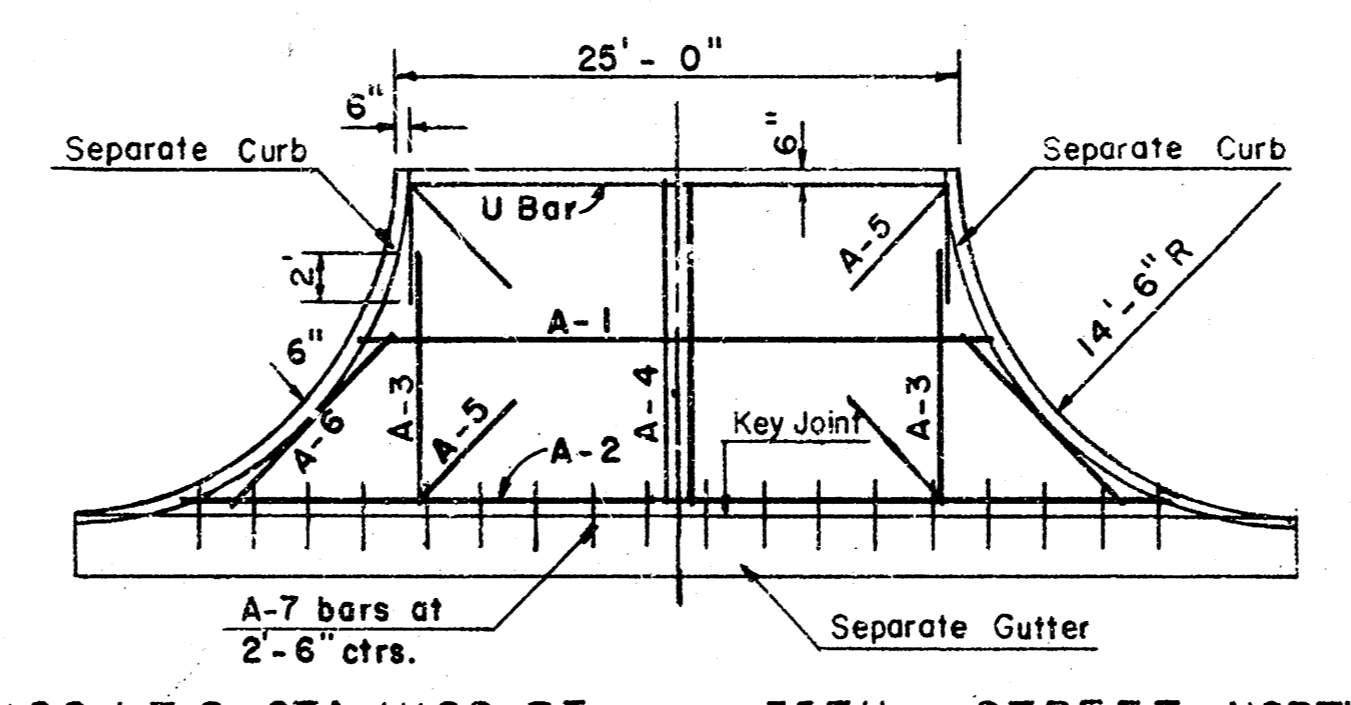
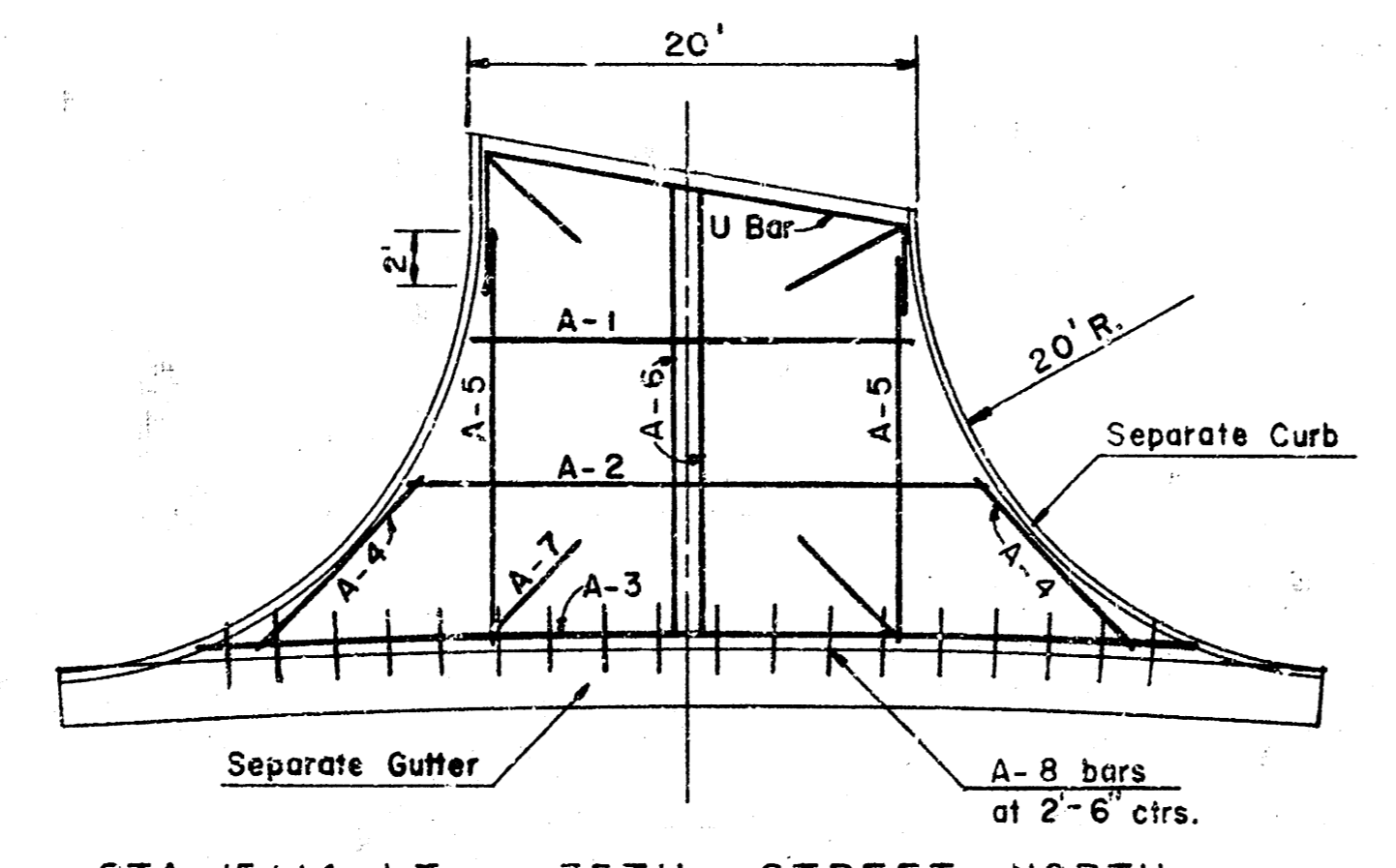


* NOTE:
 35th Street North
 Sta. 13+50 to 18+00 R/L
 Sta. 15+50 to 18+00 L/L

A TACK COAT OF EMULSIFIED ASPHALT (SS-IH) SHALL BE APPLIED AT AN APPROXIMATE RATE 0.05 GALLONS PER SQ YD. BETWEEN LIFTS OF ASPHALTIC MATERIALS WHEN ORDERED BY THE ENGINEER. TACK COAT WILL NOT BE PAID FOR DIRECTLY AND SHALL BE CONSIDERED AS SUBSIDIARY TO PRICE BID FOR ASPHALTIC PAVEMENT.

BITUMINOUS BASE AND ASPHALTIC CONCRETE WEARING SURFACE SHALL BE PLACED WITH A LAYDOWN MACHINE HAVING AUTOMATIC ELECTRONIC CONTROLS FOR CROWN AND GRADE. CONSTRUCTION JOINTS IN EACH LIFT SHALL BE STAGGERED A MINIMUM DISTANCE OF 1' WITH JOINTS IN PRECEDING LIFTS AND SUCH THAT A JOINT WILL BE CONSTRUCTED ON THE PAVEMENT CENTERLINE IN THE TOP LIFT.

BILL OF MATERIAL				
NO	SIZE	LENGTH	SHAPE	MARK
1	6	30' 0"	U BAR	
1	6	20' 0"	A-1 BAR	
1	6	27' 0"	A-2 BAR	
1	6	45' 0"	A-3 BAR	
2	6	11' 0"	A-4 BAR	
2	6	17' 0"	A-5 BAR	
2	6	20' 0"	A-6 BAR	
4	6	6' 0"	A-7 BAR	
18	4	3' 0"	A-8 BAR	
*4 TOTAL		54 L.F.		
*6 TOTAL		242 L.F.		

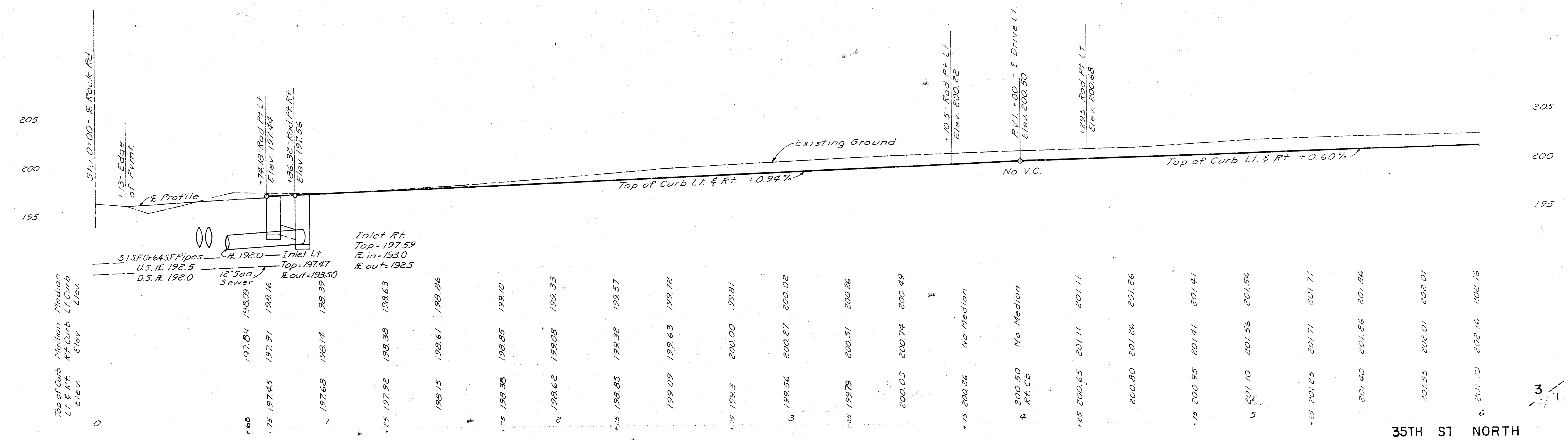
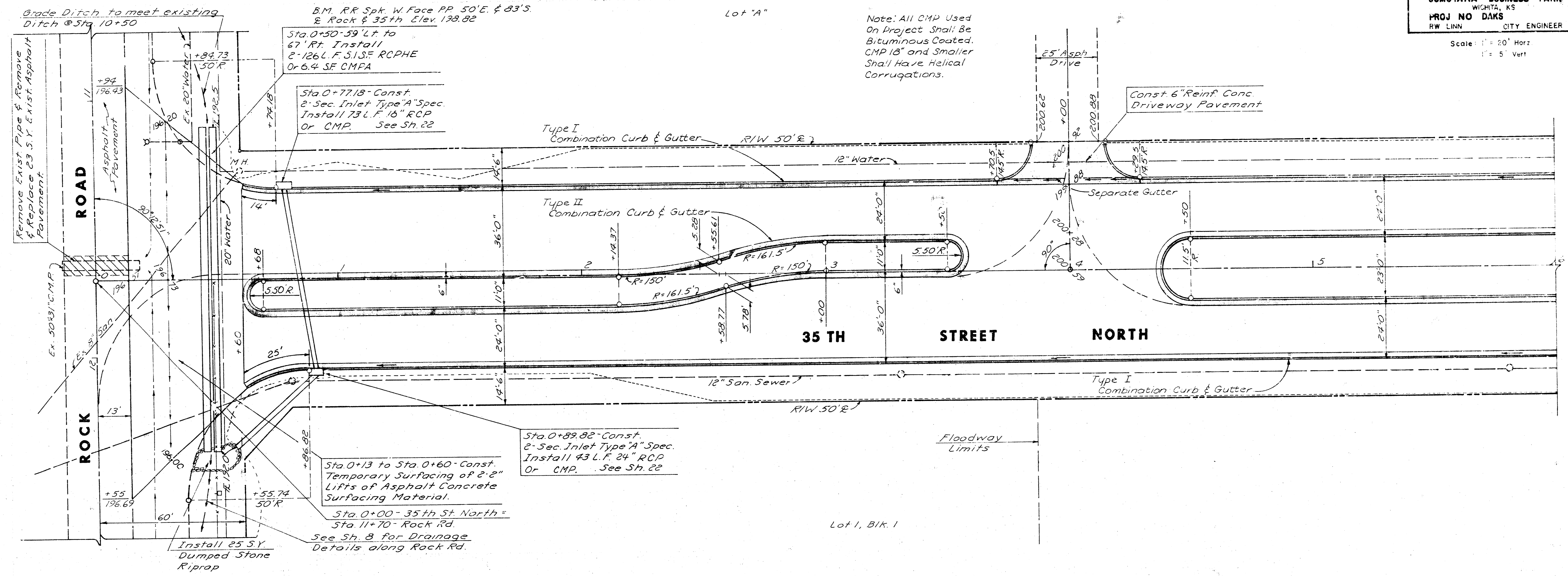


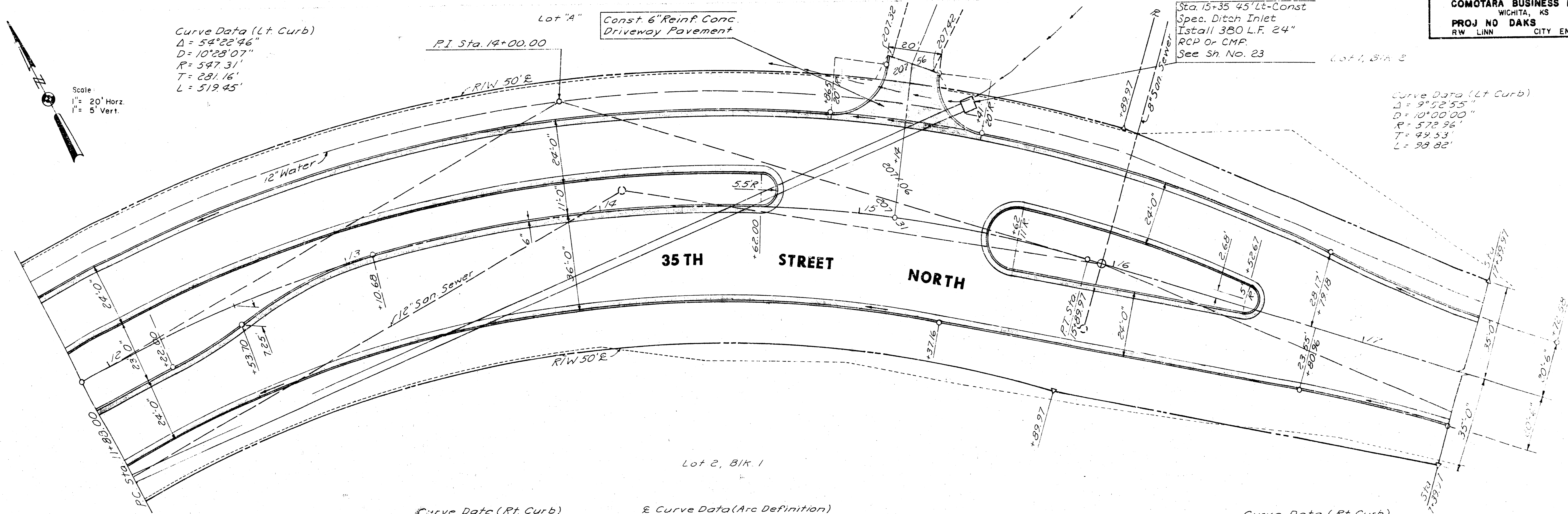
BILL OF MATERIAL				
NO	SIZE	LENGTH	SHAPE	MARK
1	6	34' 0"	U BAR	
1	6	28' 0"	A-1 "	
1	6	43' 0"	A-2 "	
2	6	10' 0"	A-3 "	
4	6	13' 0"	A-4 "	
2	6	6' 0"	A-5 "	
2	6	12' 0"	A-6 "	
18	4	3' 0"	A-7 "	
*4 TOTAL		54 L.F.		
*6 TOTAL		195 L.F.		

STA 15+14 LT 35TH STREET NORTH STA 4+00 LT & STA 11+28 RF 35TH STREET NORTH

TYPICAL REINFORCING FOR 6" CONCRETE DRIVEWAYS

DESIGN	COMOTARA BUSINESS PARK WICHITA, KANSAS
DR. BY	
CK. BY	
DATE	
JOB NO.	
TYPICAL SECTIONS AND SPECIAL DETAILS	
VAN DOREN-HAZARD-STALLINGS ENGINEERS-ARCHITECTS... TOPEKA, KANSAS	
SHEET	2
OF	7





Curve Data (Lt. Curb)
 $\Delta = 54^{\circ}22'46''$
 $D = 10^{\circ}28'07''$
 $R = 547.31'$
 $T = 281.16'$
 $L = 519.45'$

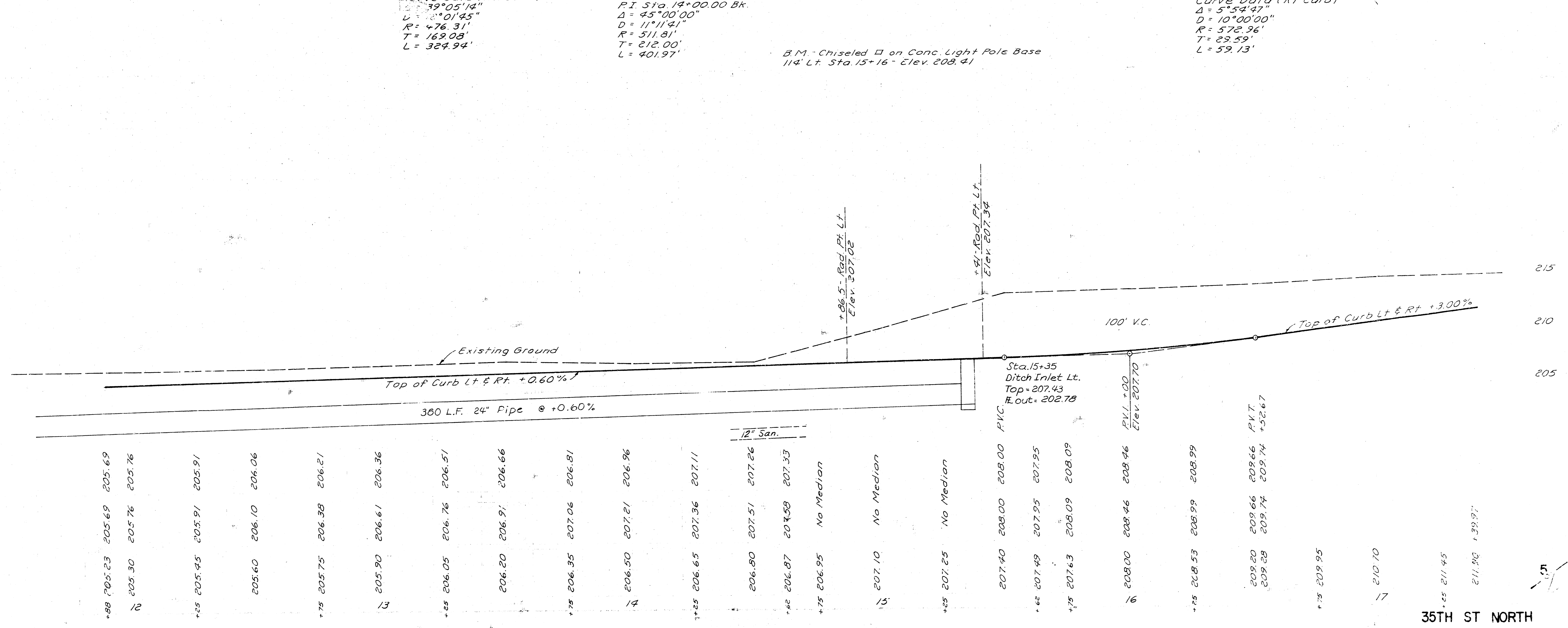
Curve Data (Lt. Curb)
 $\Delta = 9^{\circ}52'55''$
 $D = 10^{\circ}00'00''$
 $R = 572.96'$
 $T = 49.53'$
 $L = 98.82'$

Curve Data (Rt. Curb)
 $\Delta = 39^{\circ}05'12''$
 $D = 8^{\circ}01'45''$
 $R = 476.31'$
 $T = 169.08'$
 $L = 324.94'$

E Curve Data (Arc Definition)
 $P.I. Sta. 14+00.00$
 $\Delta = 45^{\circ}00'00''$
 $D = 11^{\circ}11'41''$
 $R = 511.81'$
 $T = 212.00'$
 $L = 401.97'$

Curve Data (Rt. Curb)
 $\Delta = 5^{\circ}54'47''$
 $D = 10^{\circ}00'00''$
 $R = 572.96'$
 $T = 29.59'$
 $L = 59.13'$

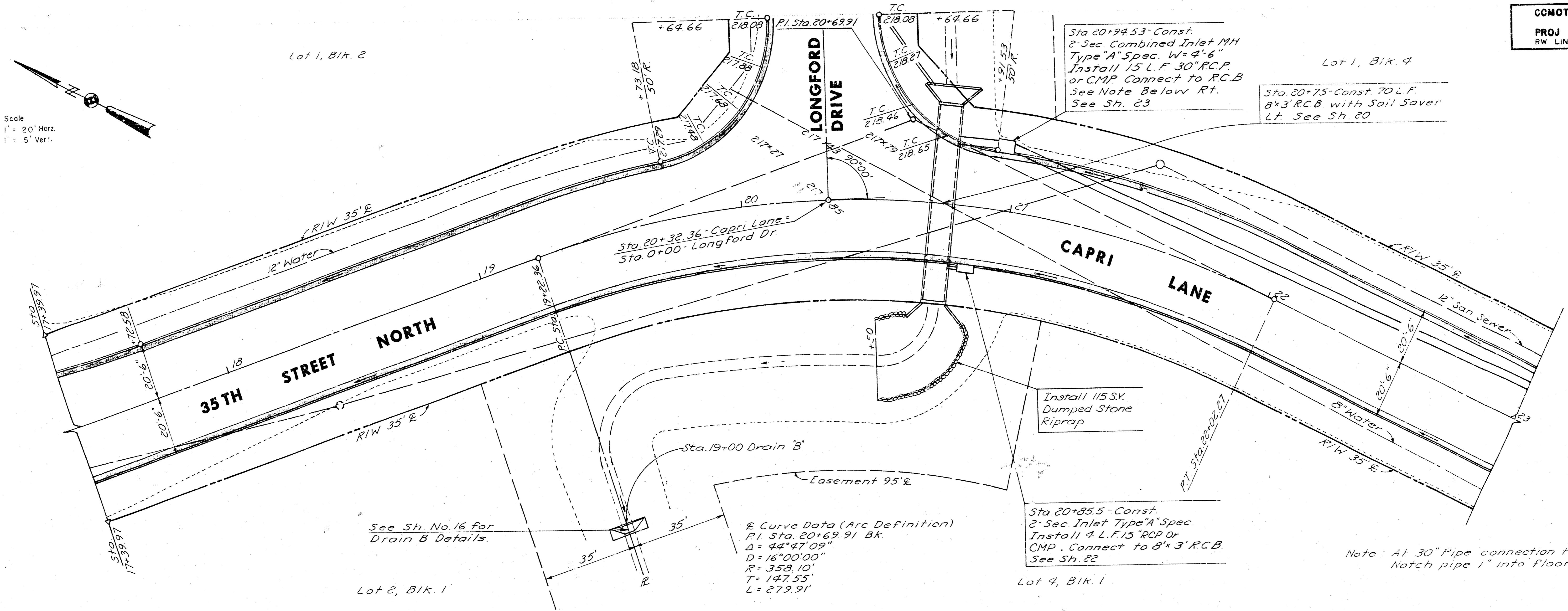
B.M. - Chiseled \square on Conc. Light Pole Base
 114' Lt. Sta. 15+16 - Elev. 208.41



Top Curb Median
 Lt. & Rt. Curb
 Elev. Elev.

+88	205.23	205.69	205.69
10	205.30	205.76	205.76
+29	205.45	205.91	205.91
	205.60	206.10	206.06
+75	205.75	206.38	206.21
13	205.90	206.61	206.36
+25	206.05	206.76	206.51
	206.20	206.91	206.66
+75	206.35	207.06	206.81
14	206.50	207.21	206.96
+25	206.65	207.36	207.11
	206.80	207.51	207.26
+22	206.87	207.58	207.33
+75	206.95	No Median	
15	207.10	No Median	
+25	207.25	No Median	
	207.40	208.00	208.00 P.V.C.
+22	207.49	207.95	207.95
+75	207.63	208.09	208.09
16	208.00	208.46	208.46 P.V.L. +0.0 Elev. 207.70
+75	208.53	208.99	208.99
	209.20	209.66	209.66 P.V.T.
	209.38	209.74	209.74 +52.67
+75	209.95		
	210.10		
	211.50	211.45	
	211.90	211.97	

Scale
 1" = 20' Horiz.
 1" = 5' Vert.



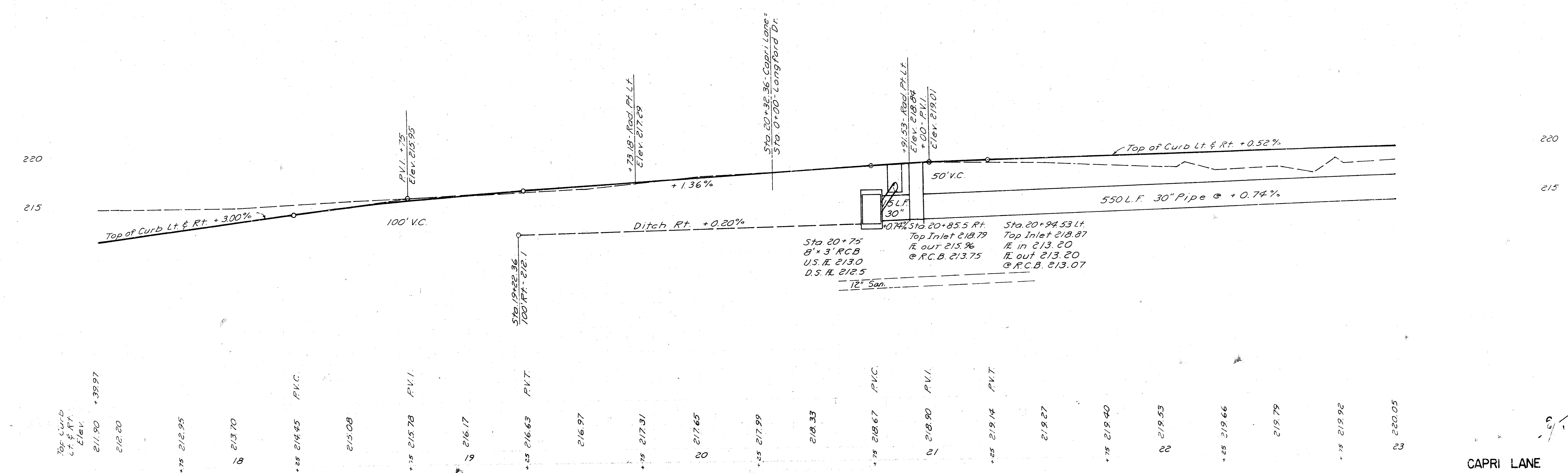
CCNOTARA BUSINESS PARK
 WICHITA, KS
PROJ NO DAKS
 RW LINN CITY ENGINEER

See Sh. No. 16 for
 Drain B Details.

Curve Data (Arc Definition)
 P.I. Sta. 20+62.91 Bk.
 $\Delta = 44^{\circ}47'09''$
 $D = 16^{\circ}00'00''$
 $R = 358.10'$
 $T = 147.55'$
 $L = 279.91'$

Sta. 20+85.5 - Const.
 2-sec. Inlet Type A Spec.
 Install 4 L.F. 15" RCP or
 CMP. Connect to 8'x3' R.C.B.
 See Sh. 22

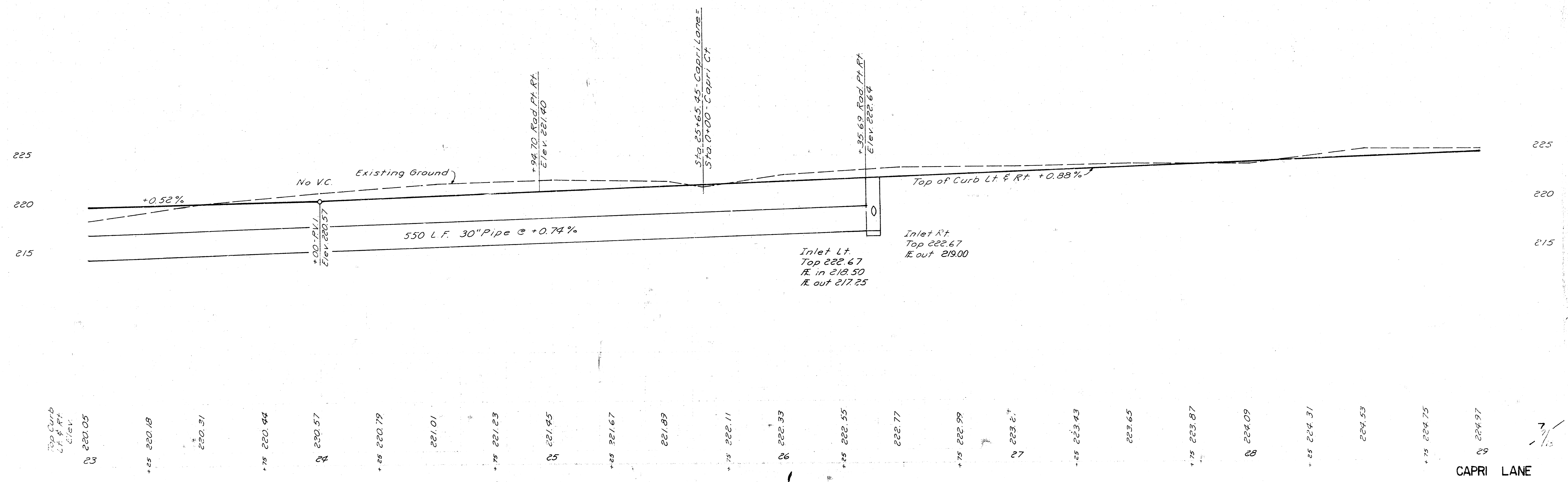
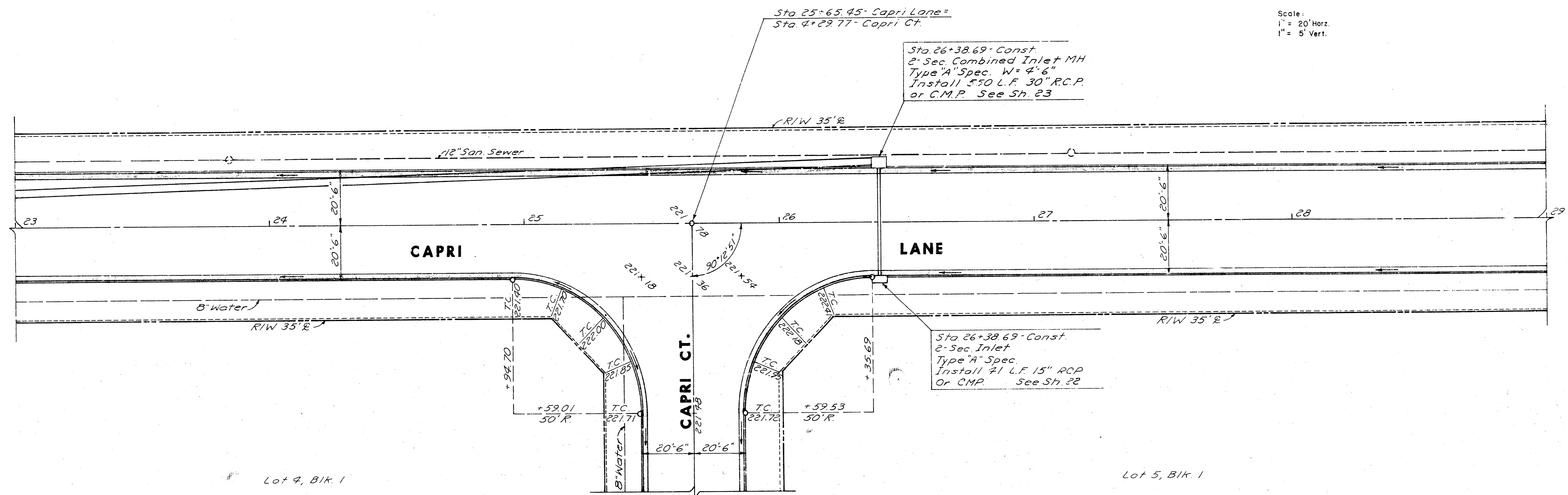
Note: At 30" Pipe connection to 8'x3' R.C.B.
 Notch pipe 1" into floor slab.



Top of Curb Lt. & Rt. Elev. 211.90 +39.97
 212.20
 212.95
 213.70
 214.45 P.V.C.
 215.08
 215.78 P.V.I.
 216.17
 216.63 P.V.T.
 216.97
 217.31
 217.65
 217.99
 218.33
 218.67 P.V.C.
 218.90 P.V.I.
 219.14 P.V.T.
 219.27
 219.40
 219.53
 219.66
 219.79
 219.92
 220.05

CAPRI LANE

Scale:
1" = 20' Horiz.
1" = 5' Vert.

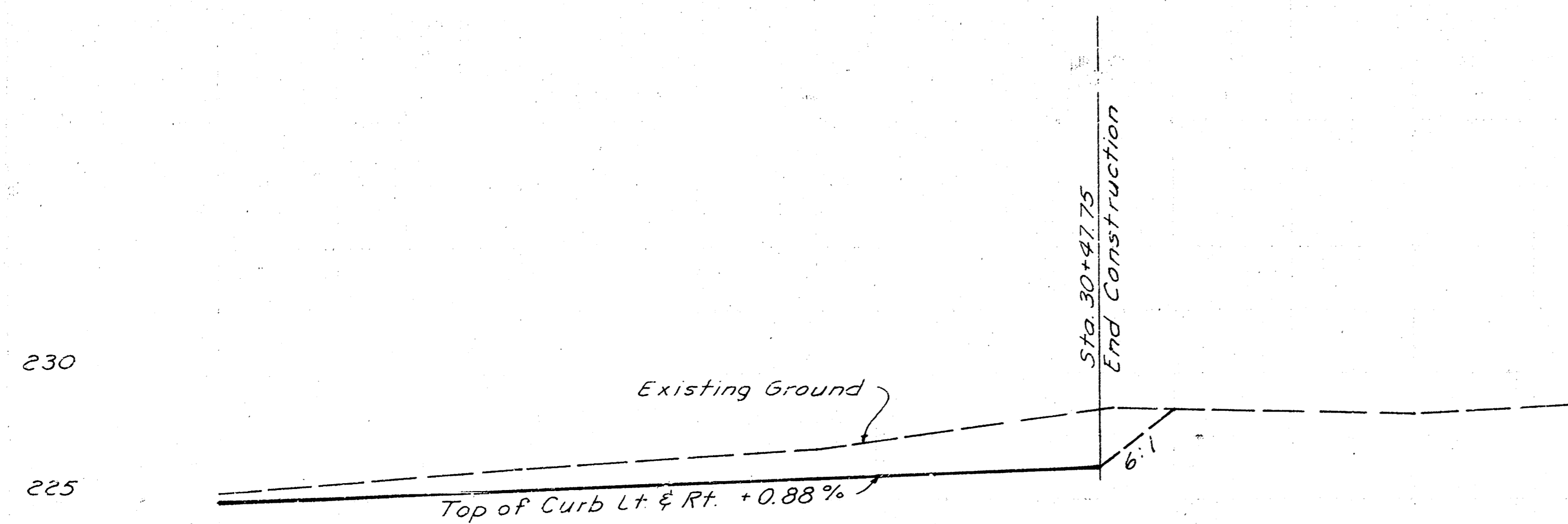
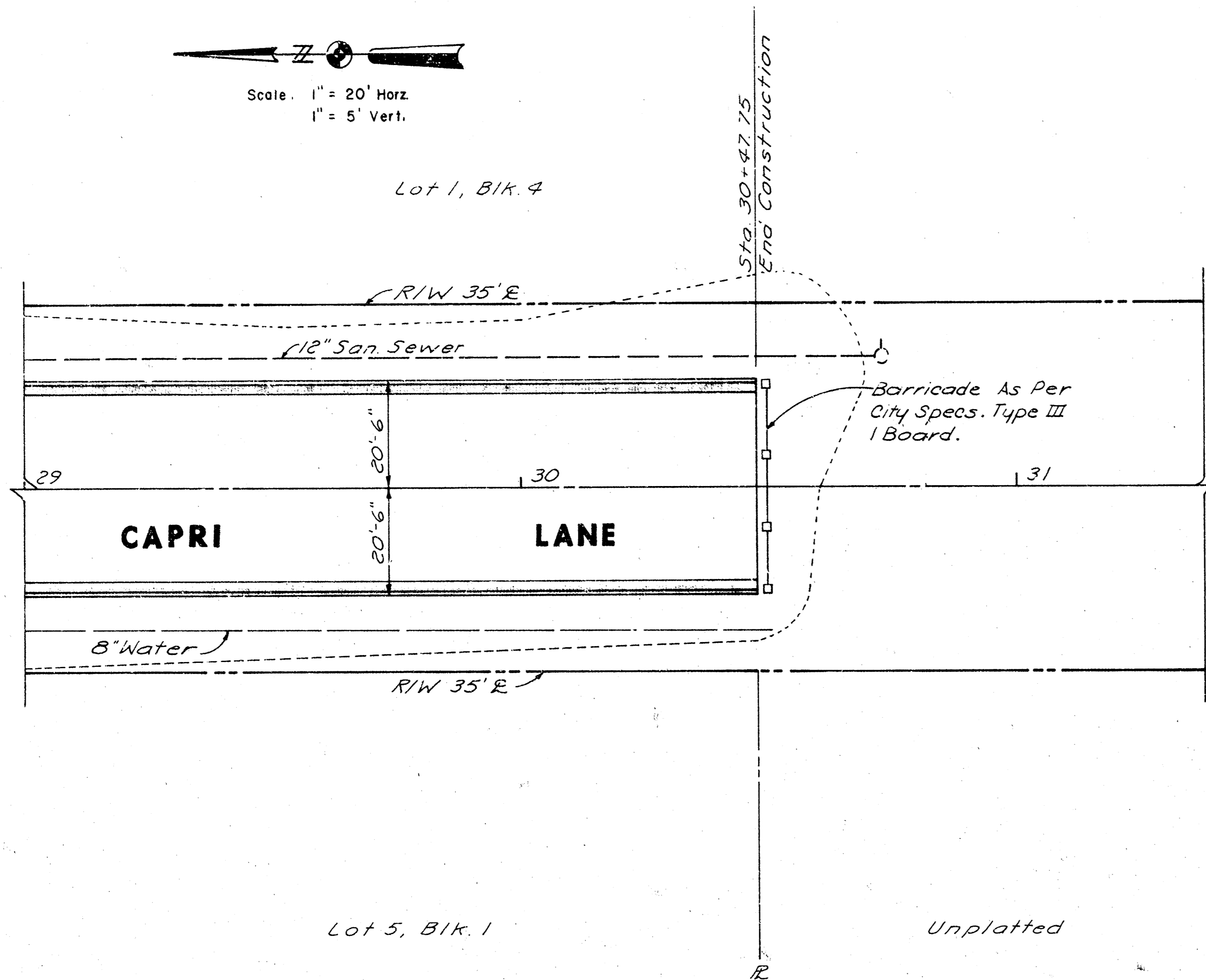


Top Curb
L.F. & RT
Elev.

23 220.05
+55 220.18
24 220.31
+75 220.44
25 220.57
+95 220.79
101.23
+115 221.23
26 221.45
+135 221.67
27 221.89
+155 222.11
28 222.33
+175 222.55
29 222.77
+195 222.99
20 223.21
+215 223.43
21 223.65
+235 223.87
22 224.09
+255 224.31
23 224.53
+275 224.75
24 224.97
25 224.99

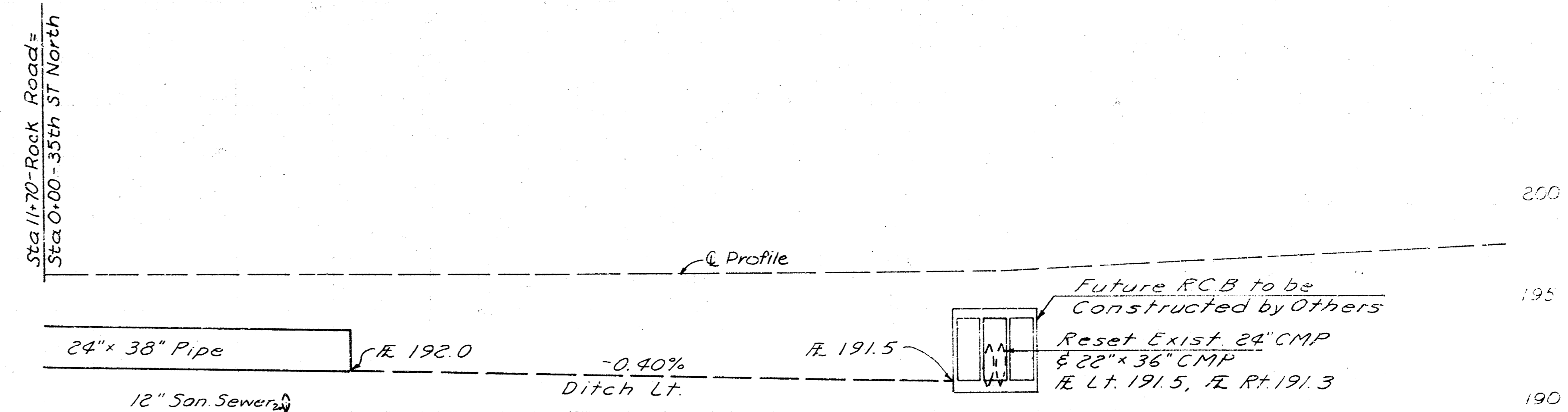
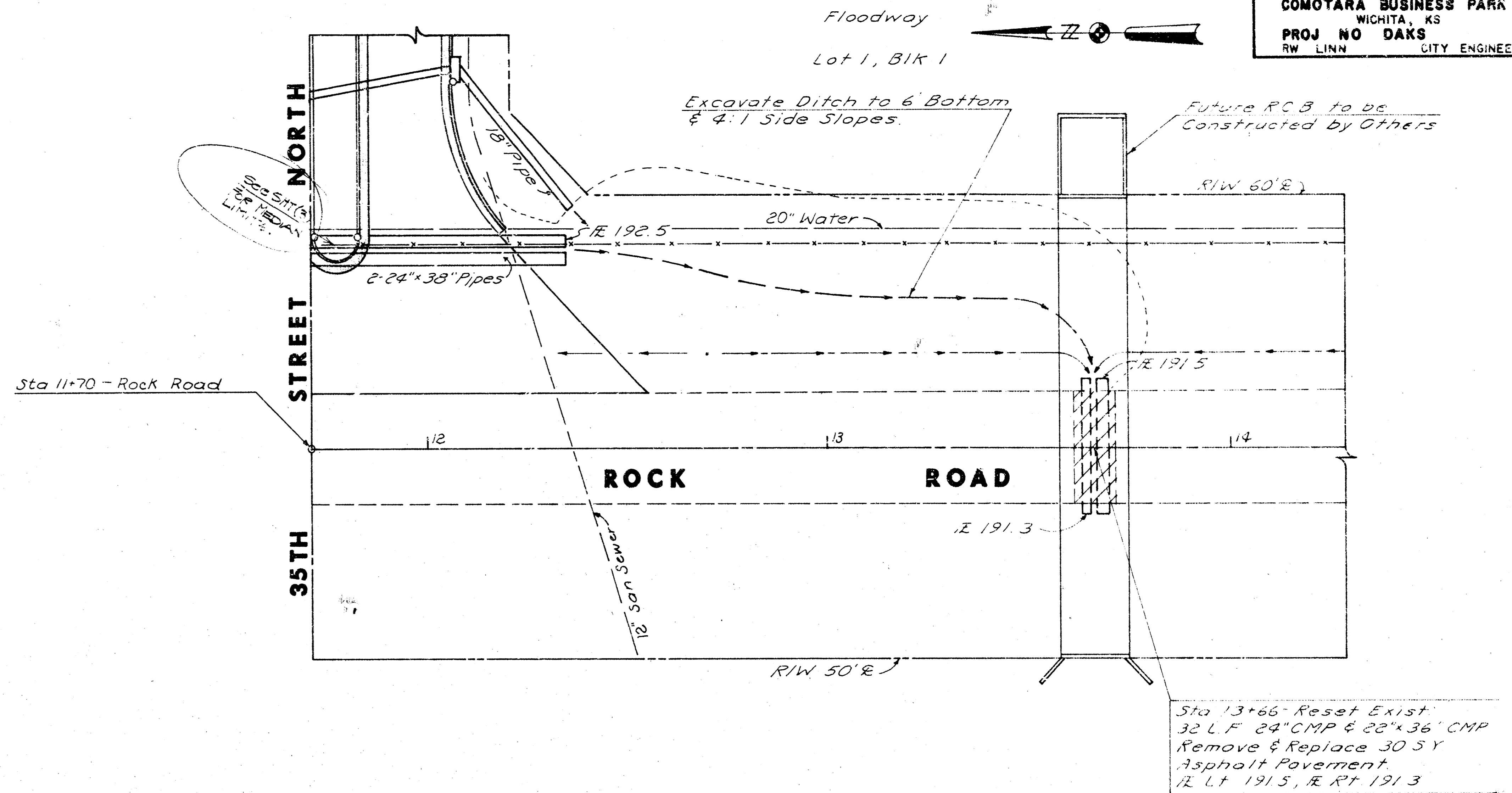
CAPRI LANE

Scale: 1" = 20' Horiz.
1" = 5' Vert.



Top Curb Lt & Rt Elev. 224.87
+25 225.19
225.41
+25 225.63
30
+25 226.07
226.27 +47.75

COMOTARA BUSINESS PARK
WICHITA, KS
PROJ NO DAKS
RW LINN CITY ENGINEER

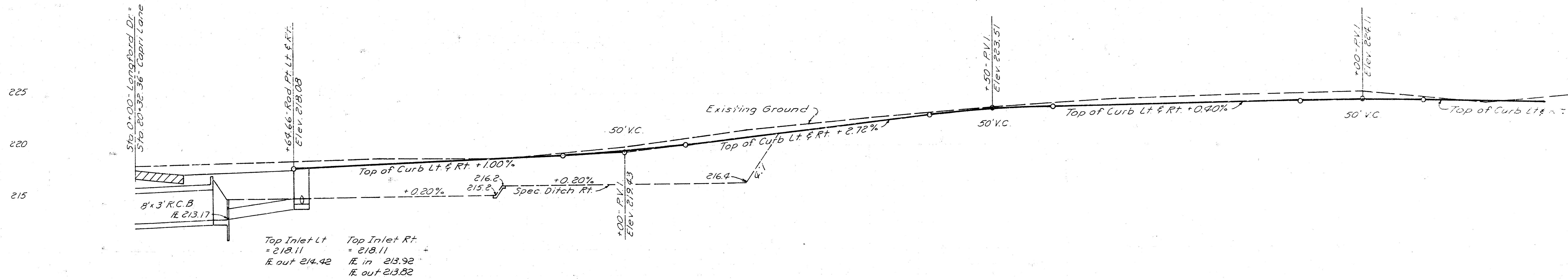
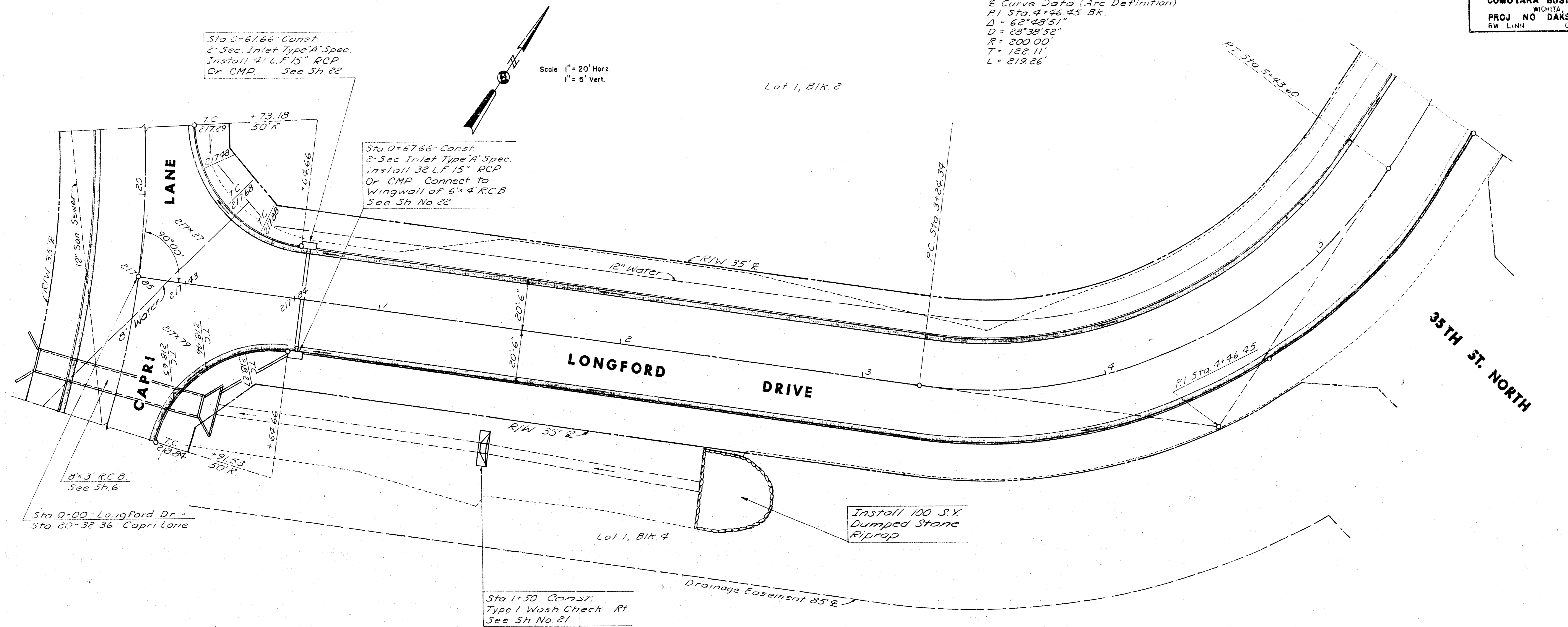


Sta 11+70 - Rock Road
Sta 0+00 - 35th St North

12 13 14

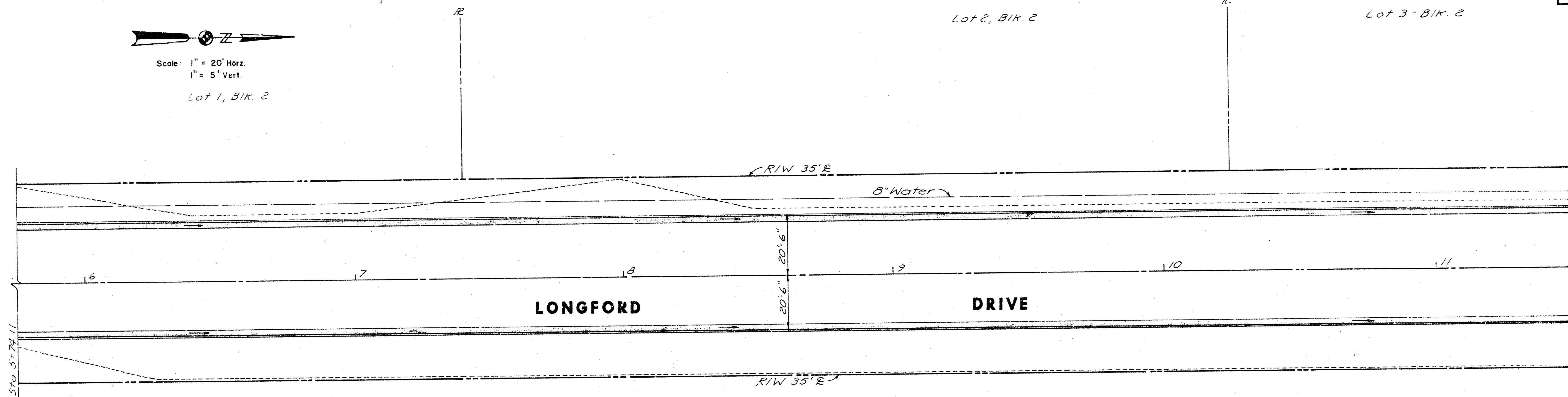
CAPRI LANE

Curve Data (Arc Definition)
 PI Sta 4+96.45 BK.
 $\Delta = 62^{\circ}48'51''$
 $D = 28^{\circ}38'52''$
 $R = 200.00'$
 $T = 182.11'$
 $L = 219.66'$

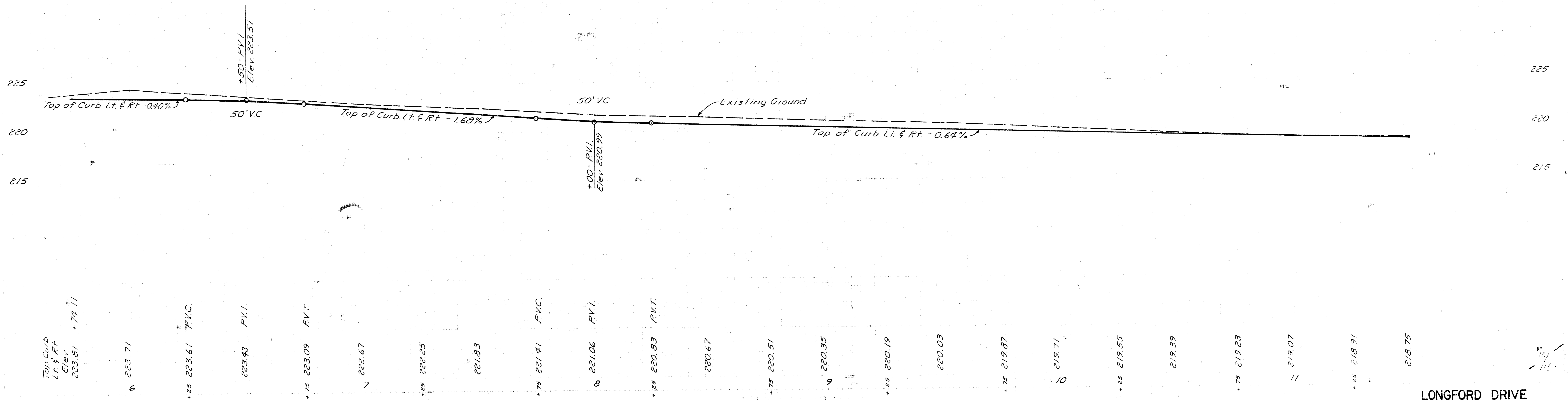


0	218.08	+64.66	
1	218.18		
2	219.54	P.V.I.	
3	222.15		
4	222.83	P.V.C.	
5	223.97	P.V.I.	
6	224.01	P.V.C.	
7	224.06	P.V.I.	
8	224.22		
9	224.22		
10	224.22		
11	224.22		
12	224.22		
13	224.22		
14	224.22		
15	224.22		
16	224.22		
17	224.22		
18	224.22		
19	224.22		
20	224.22		

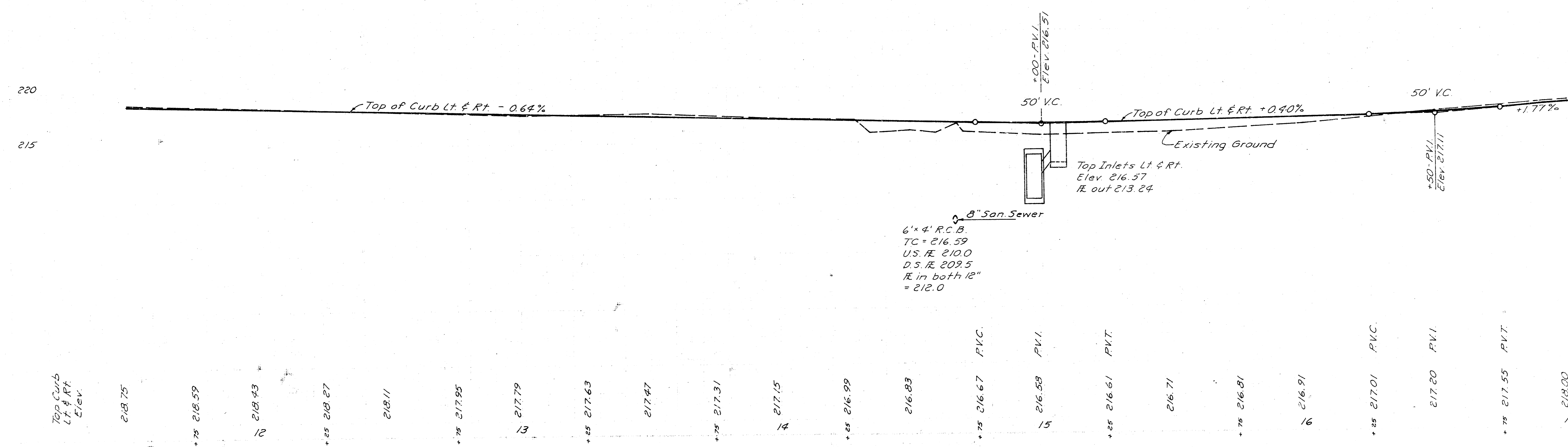
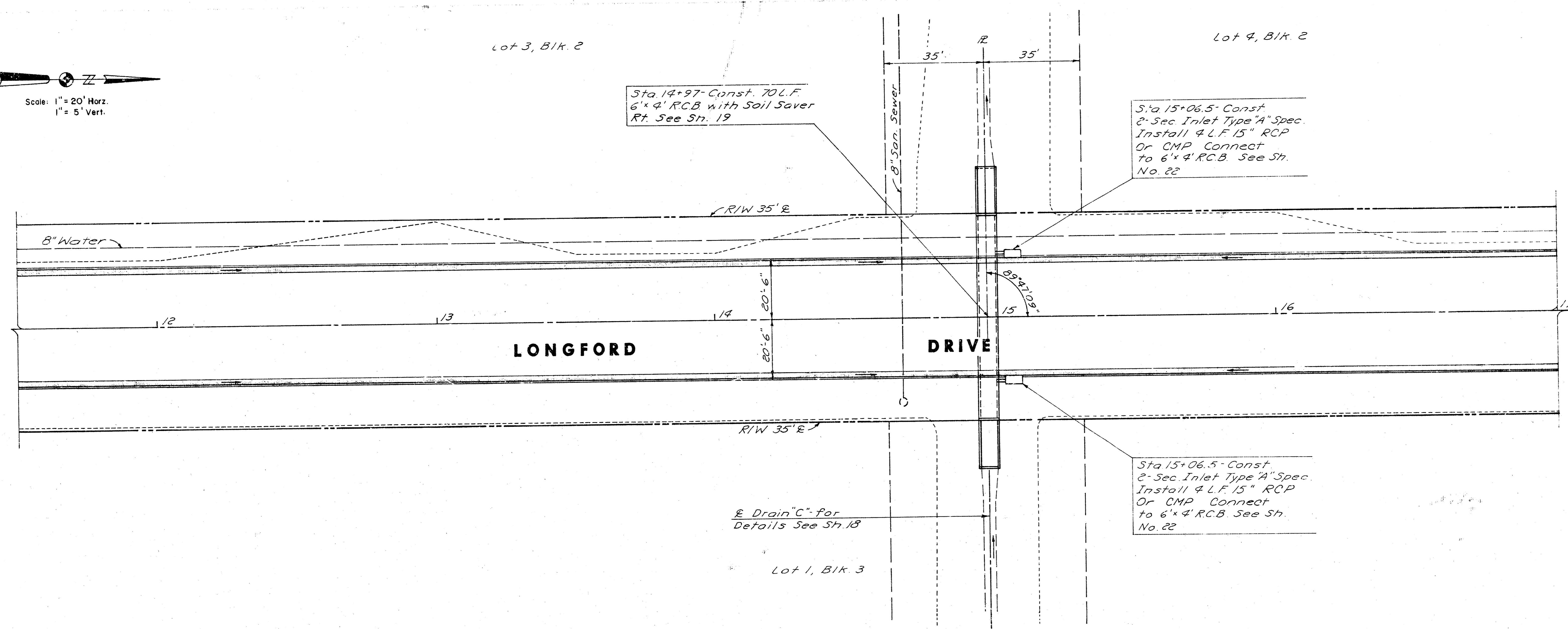
Scale: 1" = 20' Horz.
 1" = 5' Vert.
 Lot 1, Blk 2

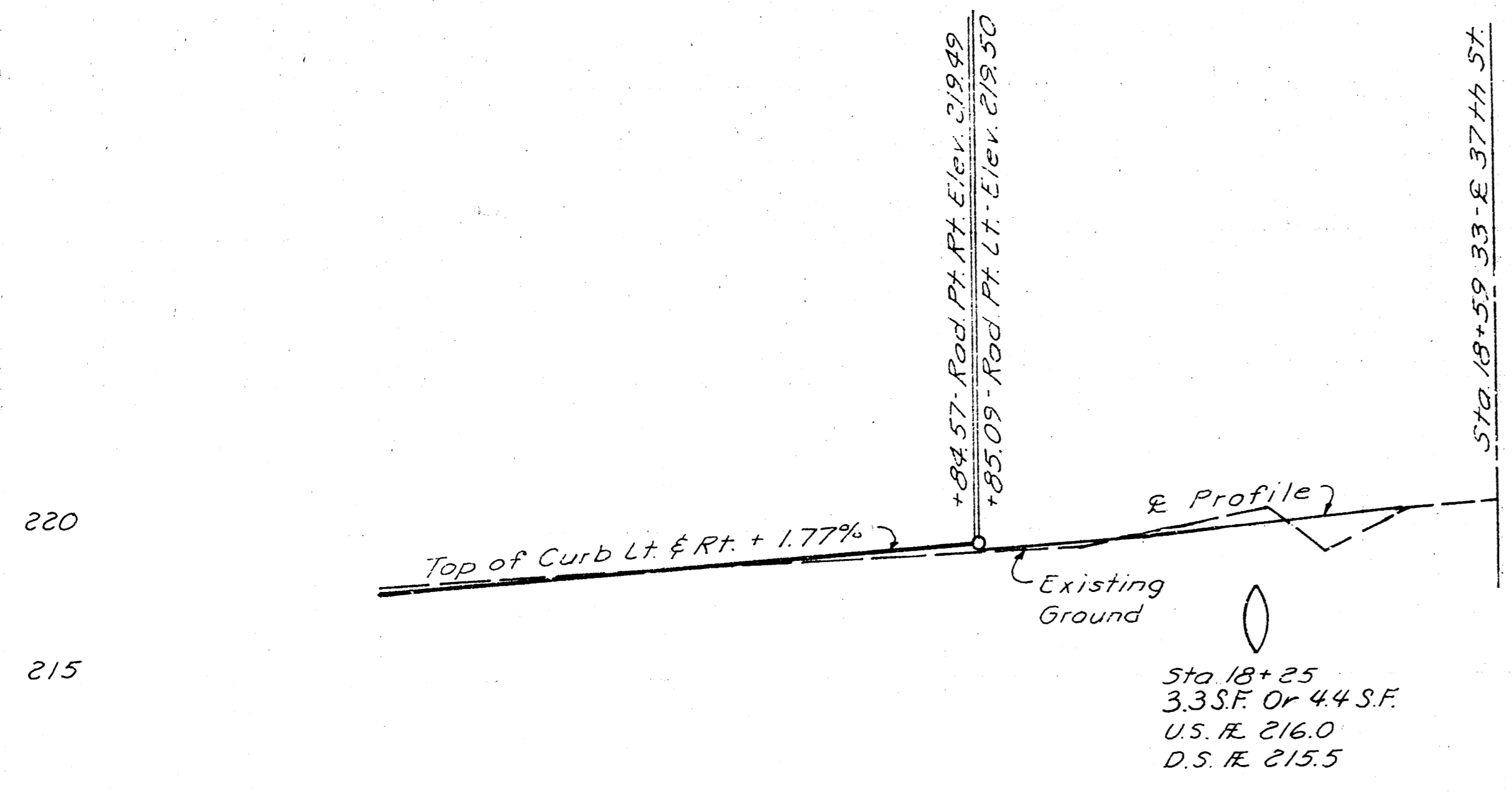
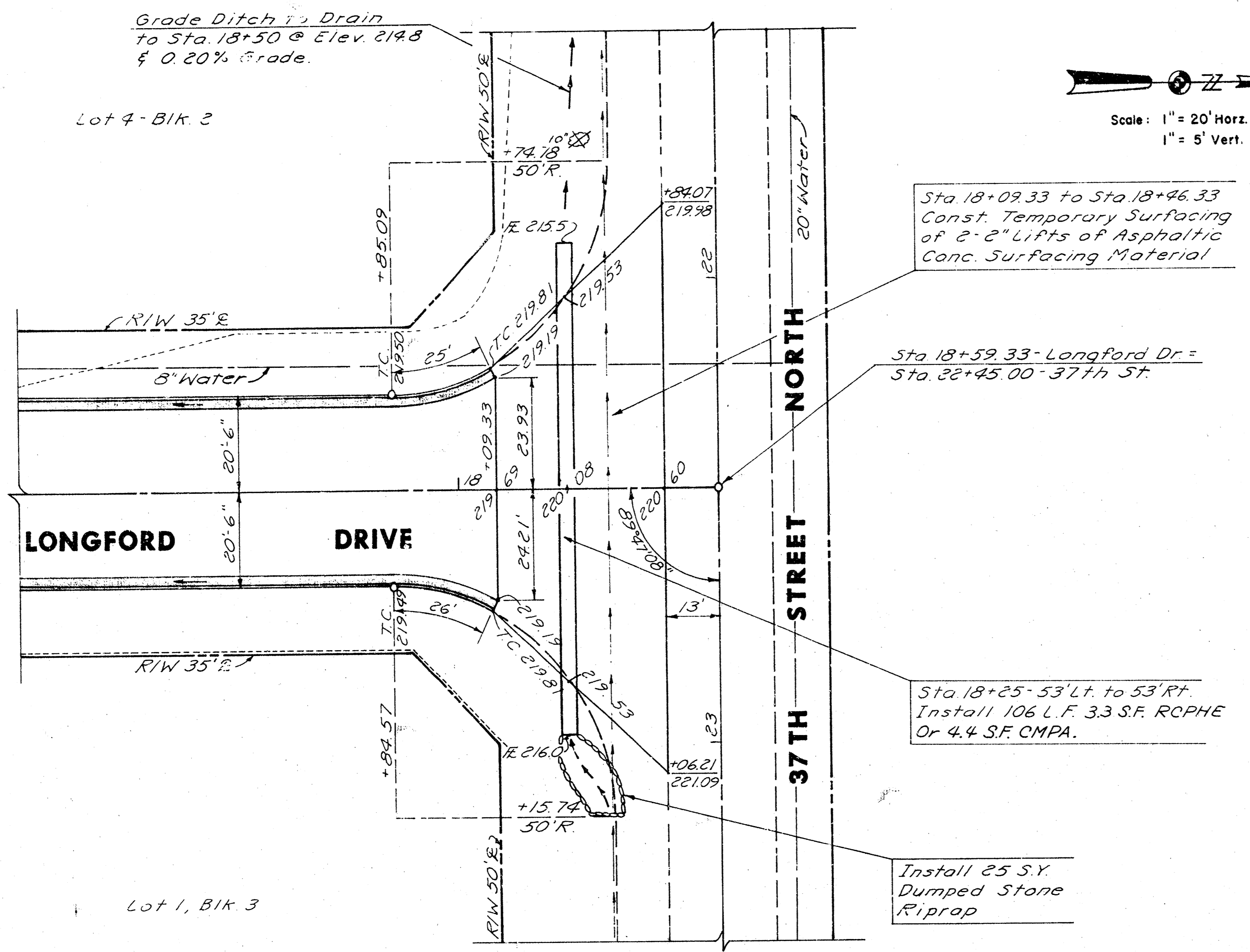


Lot 1, Blk 3



Scale: 1" = 20' Horiz.
 1" = 5' Vert.





Top Curb Lt & Rt Elev.	218.00
17	
+25	218.44
	218.88
+75	219.32
18	

