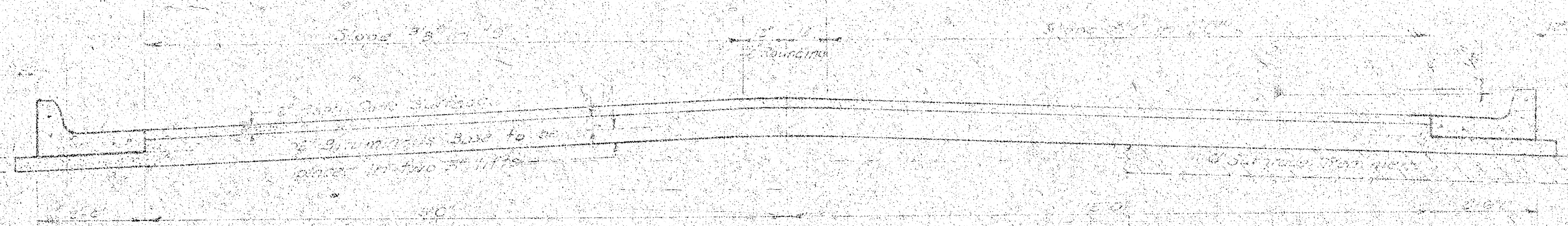


COOPER
 W.L. LOT 9, BLK. 3 QUAIL MEADOWS THIRD ADDN. TO W.L. LAUREL



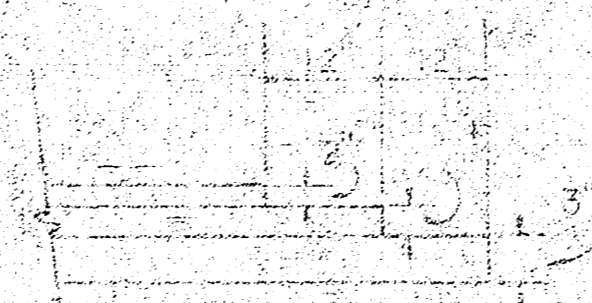
TYPICAL SECTION

35' ASPHALTIC CONCRETE PAVEMENT WITH BITUMINOUS BASE

A TACK COAT OF EMULSIFIED ASPHALT (SS-1H) SHALL BE APPLIED AT AN APPROXIMATE RATE 0.05 GALLONS PER SQ YD BETWEEN LIFTS OF ASPHALTIC MATERIALS WHEN ORDERED BY THE ENGINEER. TACK COAT WILL NOT BE PAID FOR DIRECTLY AND SHALL BE CONSIDERED AS SUBSIDIARY TO PRICE BID FOR ASPHALTIC PAVEMENT.

BITUMINOUS BASE AND ASPHALTIC CONCRETE WEARING SURFACE SHALL BE PLACED WITH A LAYDOWN MACHINE HAVING AUTOMATIC ELECTRONIC CONTROLS FOR CROWN AND GRADE. CONSTRUCTION JOINTS IN EACH LIFT SHALL BE STAGGERED A MINIMUM DISTANCE OF 1' WITH JOINTS IN PRECEDING LIFTS AND PLACED SUCH THAT A JOINT WILL BE CONSTRUCTED ON THE CENTERLINE IN THE TOP LIFT.

DETAIL OF TRANSVERSE CONSTRUCTION JOINTS

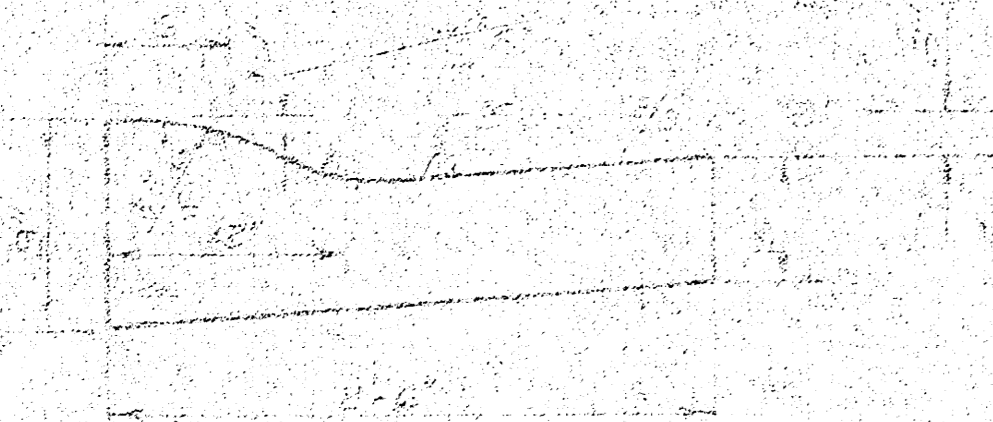


TRANSVERSE CONSTRUCTION JOINTS SHALL BE CONSTRUCTED IN FLEXIBLE BASE PAVEMENTS AT LOCATIONS WHERE PAVEMENT TEMPORARILY ENDS TO FACILITATE FUTURE PAVEMENT CONSTRUCTION AS SHOWN BY DETAIL. THE COST OF CONSTRUCTING THE TRANSVERSE CONSTRUCTION JOINTS SHALL NOT BE MEASURED OR PAID FOR DIRECTLY BUT SHALL BE INCLUDED IN THE BID PRICE FOR SQUARE YARDS OF ASPHALTIC CONCRETE PAVEMENT.

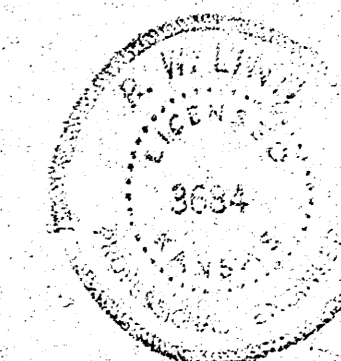
COMBINED CURB & GUTTER



ROLL TYPE CURB & GUTTER



The 1/2" pavement thickness shown in detail shall be used as shown in detail. The bituminous base shall be placed in two lifts.



CITY OF WICHITA, KANSAS

DEPARTMENT OF PUBLIC WORKS

Division

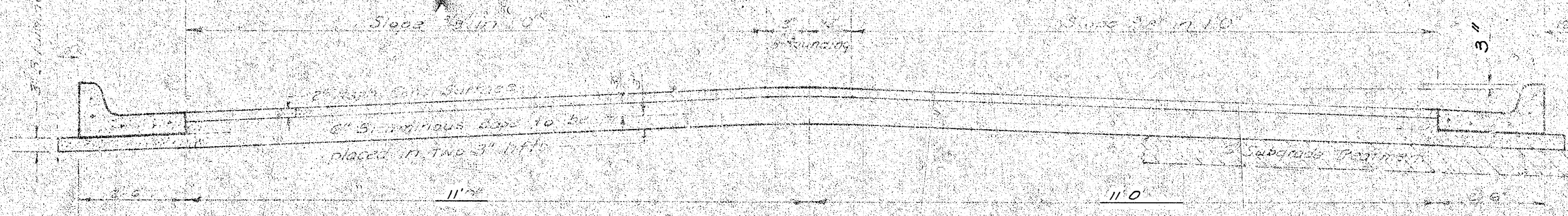
R. W. LINN CITY ENGINEER

DATE 1-75 Proj. No. DAKS 574094

(3)

FILMED FROM THE BEST AVAILABLE COPY.....

COOPER CT.
S.L. COOPER TO 8 INCL. CUL-DE-SAC



TYPICAL SECTION

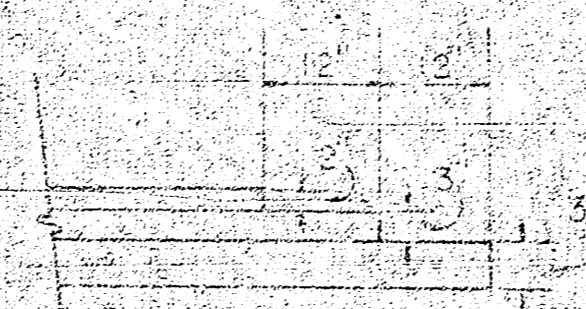
26" ASPHALTIC CONCRETE PAVEMENT WITH BITUMINOUS BASE

The A/C Pavement between the curb and gutter shall be paid for as square feet of pavement. The Bituminous Base under the curb and gutter shall be paid for as square feet of Bituminous Base.

A TACK COAT OF EMULSIFIED ASPHALT (SS-1H) SHALL BE APPLIED AT AN APPROXIMATE RATE 0.05 GALLONS PER SQ YD BETWEEN LIFTS OF ASPHALTIC MATERIALS WHEN ORDERED BY THE ENGINEER. TACK COAT WILL NOT BE PAID FOR DIRECTLY AND SHALL BE CONSIDERED AS SUBSIDIARY TO PRICE BID FOR ASPHALTIC PAVEMENT.

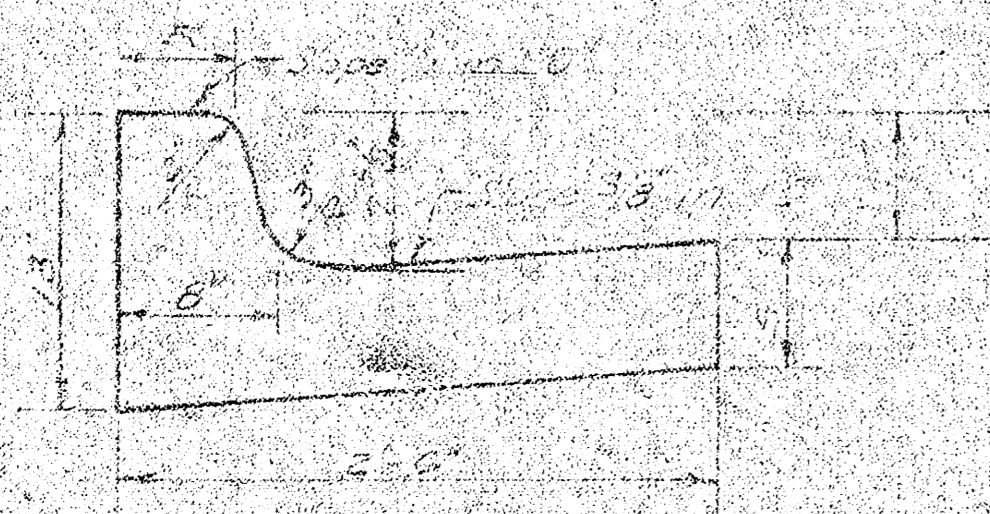
BITUMINOUS BASE AND ASPHALTIC CONCRETE WEARING SURFACE SHALL BE PLACED WITH A LAYDOWN MACHINE HAVING AUTOMATIC ELECTRONIC CONTROLS FOR CROWN AND GRADE. CONSTRUCTION JOINTS IN EACH LIFT SHALL BE STAGGERED A MINIMUM DISTANCE OF 1' WITH JOINTS IN PRECEDING LIFTS AND PLACED SUCH THAT A JOINT WILL BE CONSTRUCTED ON THE CENTERLINE IN THE TOP LIFT.

DETAIL OF TRANSVERSE CONSTRUCTION JOINTS

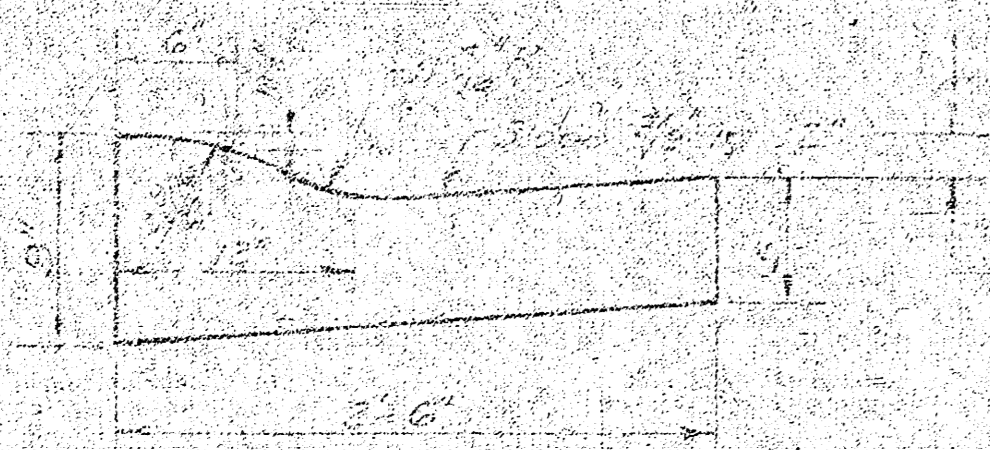


TRANSVERSE CONSTRUCTION JOINTS SHALL BE CONSTRUCTED IN FLEXIBLE BASE PAVEMENTS AT LOCATIONS WHERE PAVEMENT TEMPORARILY ENDS TO FACILITATE FUTURE PAVEMENT CONSTRUCTION AS SHOWN BY DETAIL. THE COST OF CONSTRUCTING THE TRANSVERSE CONSTRUCTION JOINTS SHALL NOT BE MEASURED OR PAID FOR DIRECTLY BUT SHALL BE INCLUDED IN THE BID PRICE FOR SQUARE YARDS OF ASPHALTIC CONCRETE PAVEMENT.

COMBINED CURB & GUTTER



ROLL TYPE CURB & GUTTER



CITY OF WICHITA KANSAS

DEPARTMENT of PUBLIC WORKS Engineering

Division

R. W. LINN

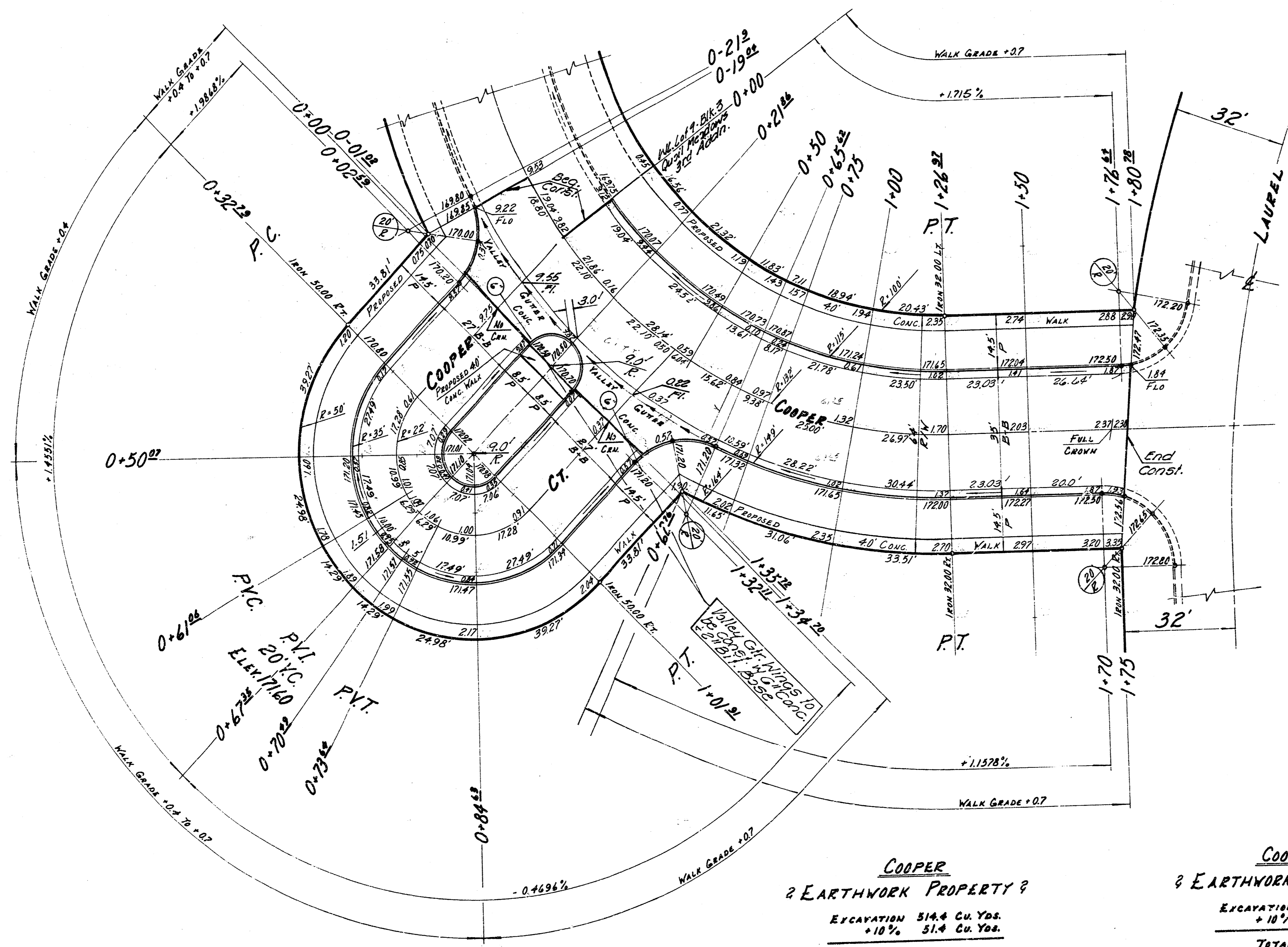
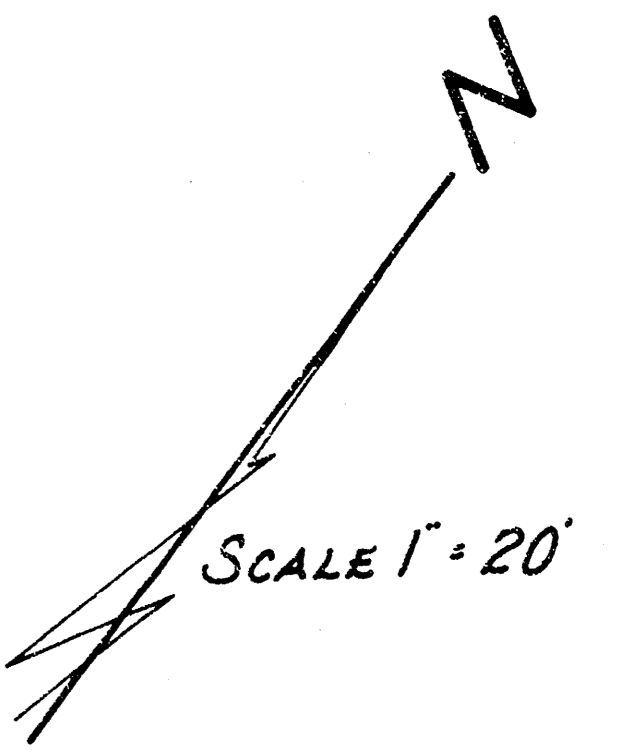
CITY ENGINEER

DATE 1-75

Proj. No. DAKS 574094

(2/)

BASELINE IS CTR. OF COOPER B.M. 162.42 R.R. SPA. S-FACE RR. N-SIDE LINCOLN 100' E OF LAUREL



Δ = 43°24'42" R = 132' T = 81.49' L = 146.01' LC = 138.48'

CURVE DATA BASED ON R. RAD. Δ ₁₂ = 31°41'21"					
STA.	ARC.	CHORD	LENGTH	DEFLECTION	TOTAL DEFLECTION
		± OFF _{1/2} CR.	± OFF _{1/4} CR.		
0+19.82				0° 00' 00"	0° 00' 00"
0+00	19.04'	15.42	22.63	4° 07' 56"	4° 07' 56"
0+21.82	21.86'	17.70	25.97	4° 44' 39"	8° 52' 35"
0+50	28.14'	22.71	33.41	6° 06' 26"	14° 59' 01"
0+65.82	15.62'	12.45	12.57	5° 23' 24"	18° 22' 25"
0+75	9.38'	7.60	11.15	2° 02' 09"	20° 24' 34"
1+00	25.05'	20.23	24.69	5° 25' 33"	25° 50' 07"
1+21.82	24.97'	21.82	32.02	5° 51' 12"	31° 41' 19"

DEFL. / FT. = 13.02174807 MIN.

Δ = 108°00'00" R = 22' T = 0' L = 69'12" LC = 44'00"

CURVE DATA BASED ON R. RAD. Δ ₁₂ = 38°05'00"					
STA.	ARC.	CHORD	LENGTH	DEFLECTION	TOTAL DEFLECTION
		± OFF _{1/2} CR.	± OFF _{1/4} CR.		
0+32.22				0° 00' 00"	0° 00' 00"
0+50.22	17.28'	3.06	32.91	22° 30' 06"	22° 30' 06"
0+67.82	10.99'	1.98	21.26	14° 18' 39"	36° 48' 45"
0+67.82	6.29'	1.14	12.25	8° 11' 27"	45° 00' 12"
0+73.82	6.29'	1.14	12.25	8° 11' 26"	53° 11' 38"
0+84.82	10.99'	1.98	21.26	14° 18' 39"	67° 30' 17"
1+01.82	17.28'	3.06	32.91	22° 30' 06"	90° 00' 23"

DEFL. / FT. = 78.13060843 MIN.

NOTE - Construct (2) Conc. Dr. on Cooper only
 (2) " Drs. " Cooper Ct. only

COOPER CT. EARTHWORK
 EXCAVATION 217.4 Cu. Yds.
 +10% 31.7 Cu. Yds.
 TOTAL 249.1 Cu. Yds.

COOPER & EARTHWORK PROPERTY ?
 EXCAVATION 514.4 Cu. Yds.
 +10% 51.4 Cu. Yds.
 TOTAL 565.8 Cu. Yds.

COOPER & EARTHWORK CITY ?
 EXCAVATION 199.3 Cu. Yds.
 +10% 19.9 Cu. Yds.
 TOTAL 219.2 Cu. Yds.

COOPER CT.
 S.L. COOPER TO & INCL. CUL-DE-SAC
 22-2-26 ASPHALTIC CONCRETE
 CITY OF WICHITA, KANSAS
 R.W. LINN CITY ENGINEER
 PROJECT NO. DAKS 574094
 DATE: 1-75
 (3/5)

COOPER
 W.L. LOT 9, BLK. 3 QUAIL MEADOWS THIRD
 ADDN. TO W.L. LAUREL
 30-2-34 ASPHALTIC CONCRETE
 CITY OF WICHITA, KANSAS
 R.W. LINN CITY ENGINEER
 PROJECT NO. DAKS 574094
 DATE: 1-75
 (3/5)

Survey King
 Eng'g. & Surveying
 Plan Approval
 OR Civil Eng.
 Checked

NOTE TO FIELD ENGINEER & CONTRACTOR
 Gross parking and clear right-of-way for proposed sidewalk. Sidewalk full to sidewalk area to be constructed by contractor.

SUB-GRADE
 TYPE OF SUB-GRADE TREATMENT SHALL BE DETERMINED BY THE FIELD ENGINEER. SUB-GRADE TREATMENT MAY CONSIST OF LIME TREATMENT, CEMENT TREATMENT, SUB-GRADE MODIFICATION, OR ANY COMBINATION OF THESE.