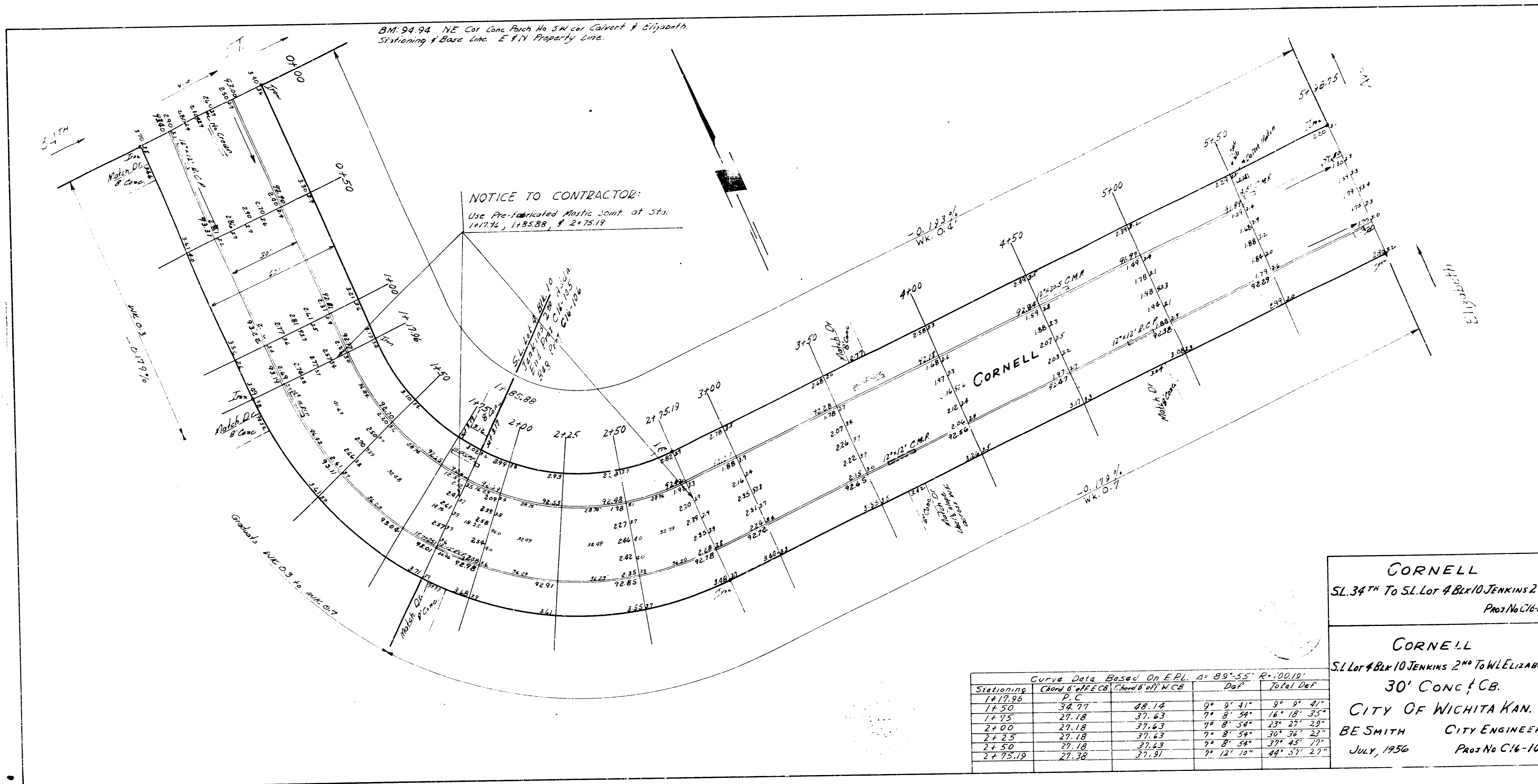


BM 94.94 NE Cor Conc Parh Ho SW cor Culvert & Elizabeth
 Stationing & Base line 2' IN Property Line.

NOTICE TO CONTRACTOR:
 Use Pre-fabricated Mastic Joint at Sta.
 1+72.4, 1+85.88, & 2+75.19



Young 1901
 Gibson
 Gibson

Curve Data Based On E.P.L. $A = 89^{\circ}55'$ $R = 100.10'$

Stationing	Chord & Offsets	Chord & Offsets	Def	Total Def
1+72.50	21.00			
1+75	34.71	48.14	9° 8' 41"	9° 8' 41"
1+75	27.18	37.63	7° 8' 54"	16° 17' 35"
1+75	27.18	37.63	7° 8' 54"	23° 26' 29"
2+25	27.18	37.63	7° 8' 54"	30° 35' 23"
2+50	27.18	37.63	7° 8' 54"	37° 44' 17"
2+75.19	27.30	37.91	7° 12' 10"	44° 56' 27"

CORNELL
 SL 34TH To SL Lot 4 Blk 10 JENKINS 2ND
 Proj No C16-105

CORNELL
 SL Lot 4 Blk 10 JENKINS 2ND To W L ELIZABETH
 30' CONC & CB.
 CITY OF WICHITA KAN.
 BE SMITH CITY ENGINEER
 JULY, 1956 Proj No C16-106