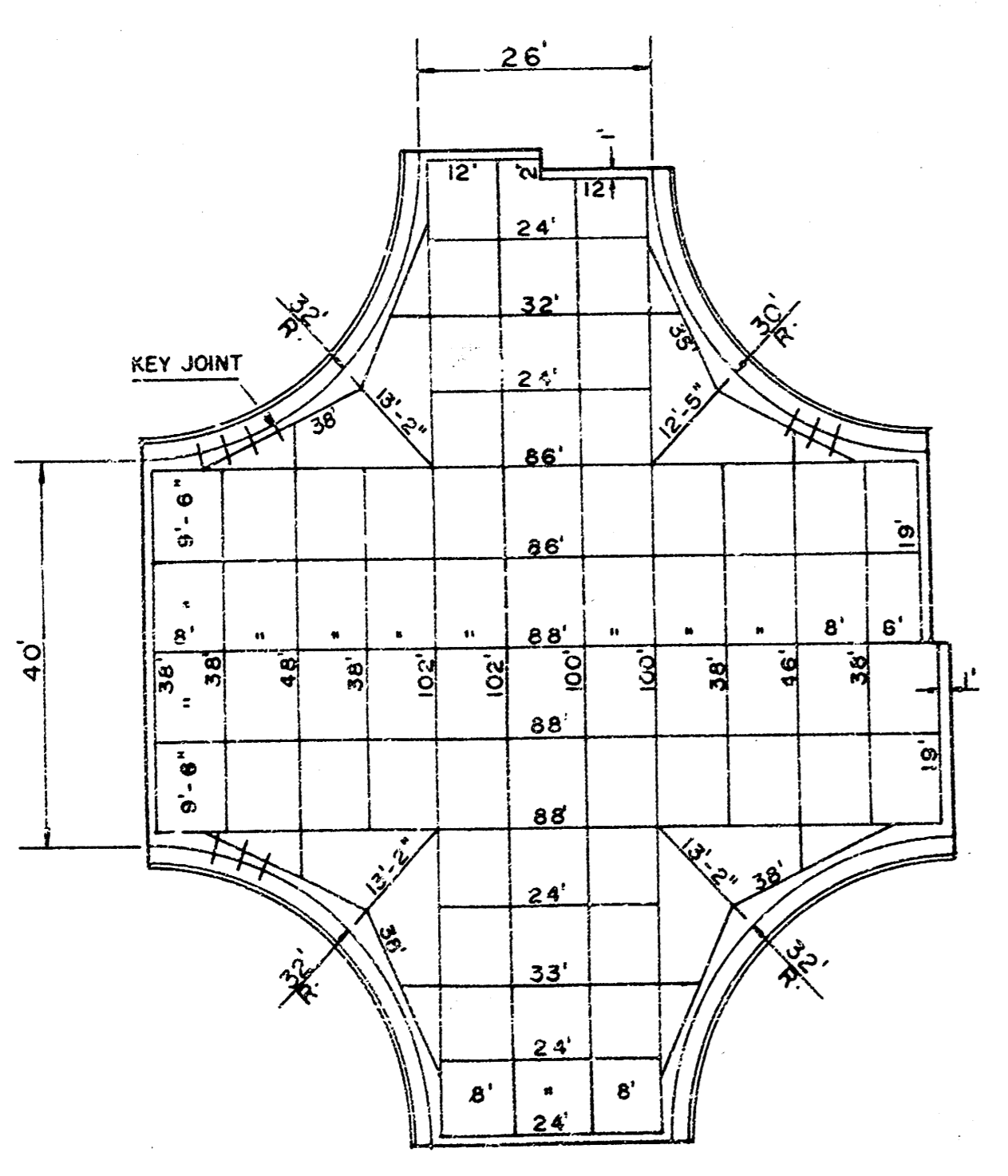
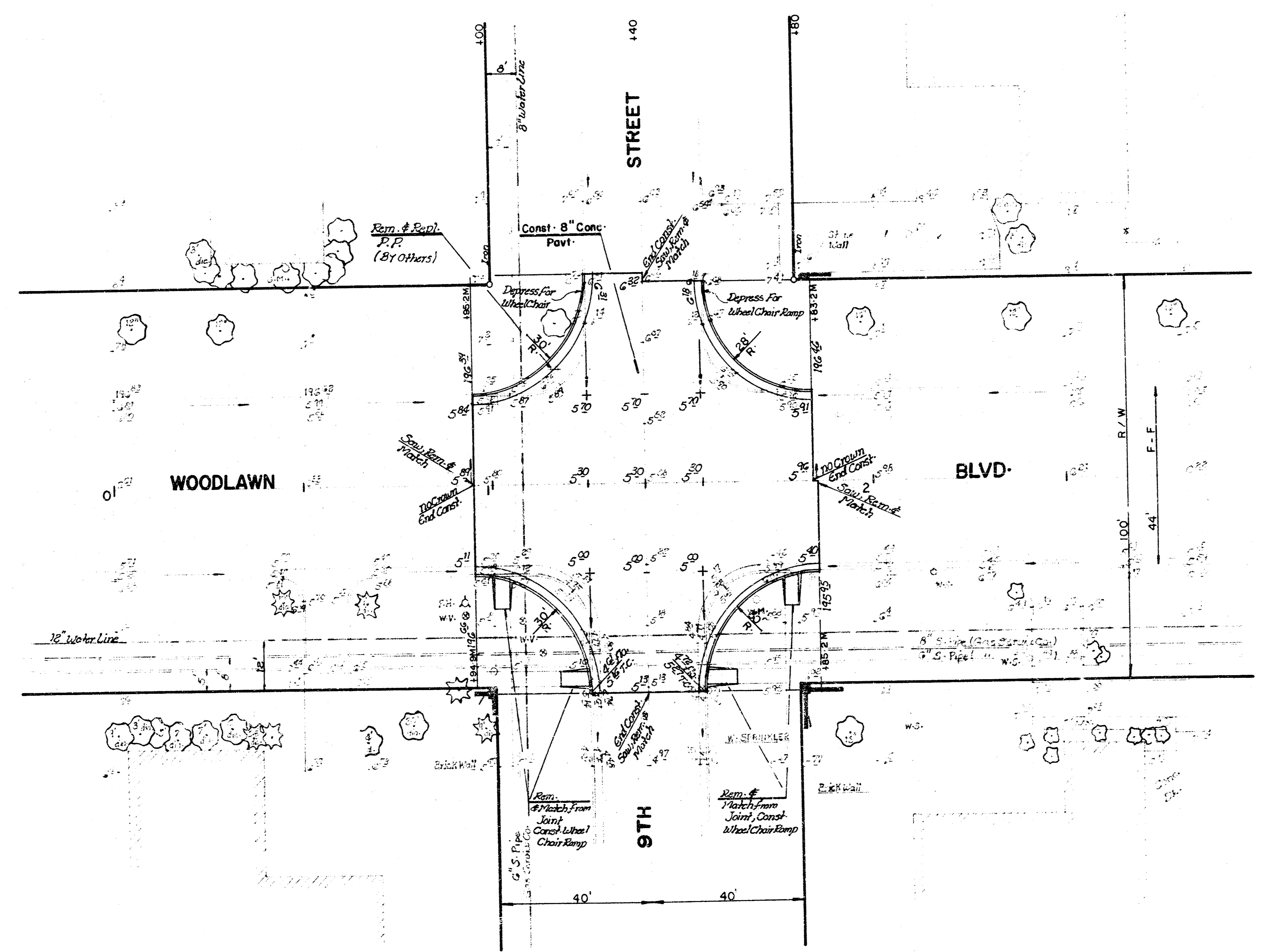


B.M. = 197.37 Woodlawn & 9th City Sid Disc - 51-2' W & 30-5' N - Of C.L. Both
 B.L. # 1 15' E. Of W.L. Woodlawn
 B.L. # 2 15' W. Of E.L. Woodlawn



Notes:
 1. Two-Way Traffic To Be Maintained On Woodlawn @ All Times.
 2. Construction Of Intersection Is To Be Coordinated With Department Of Operations & Maintenance Overlay Project.
 3. Removal Items:

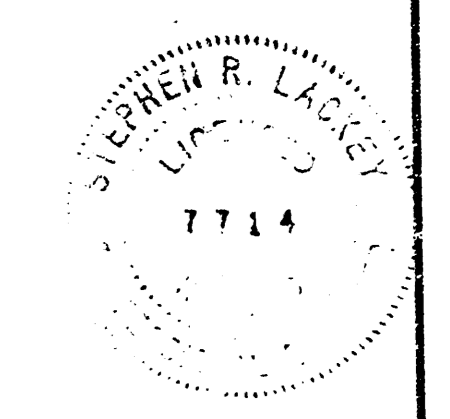


STEEL PATTERN

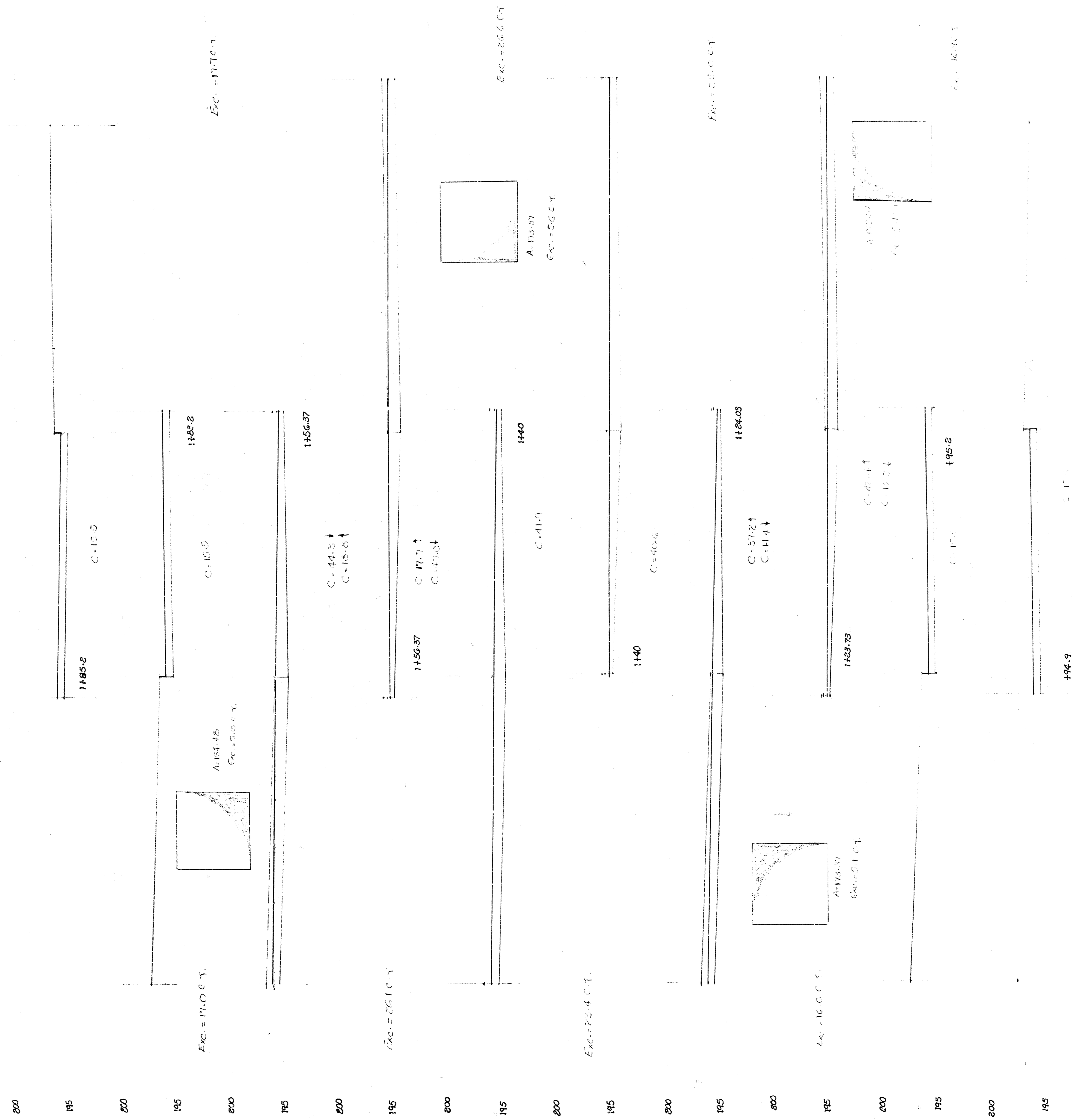
NO.	6 BARS
2-102'	
2-100'	
2-86'	
2-83'	
5-38'	
2-19'	
2-19'	
5-24'	
1-32'	
1-33'	
1-48'	
1-44'	
3-38'	
1-35'	
1-2'	
1432.0	
2150.88 lb.	

Excavation	189.50 c.y.
110%	18.95
TOTAL	208.45 c.y.
Manipulation	749.58 s.y.

ENGINEER'S SIGNATURE AND SEAL
 SUBGRADE
 TYPE OF SUB-GRADE TREATMENT SHALL BE DETERMINED BY THE ENGINEER AND SHALL BE FURNISHED IN ACCORDANCE WITH THE LATEST EDITION OF THE STANDARD SPECIFICATIONS FOR ROAD AND BRIDGE CONSTRUCTION, OR ANY SUBSTITUTION THEREOF.



PROJECT DESCRIPTION	
Reconstruction Of Intersection A1 Woodlawn Blvd & 9TH ST.	
PROJECT NUMBER	
472-76-245-81163-000-000-001	
BOOK NO. BR 87	APPROVED BY
DRAWN BY A. Shaghighi	DATE 4-16-82
REVISOR	
CITY OF WICHITA	
DEPARTMENT OF ENGINEERING	
DIRECTOR OF ENG./CITY ENGINEER	SCALE
R. W. BRUGGEMAN	1" = 20'



a/a