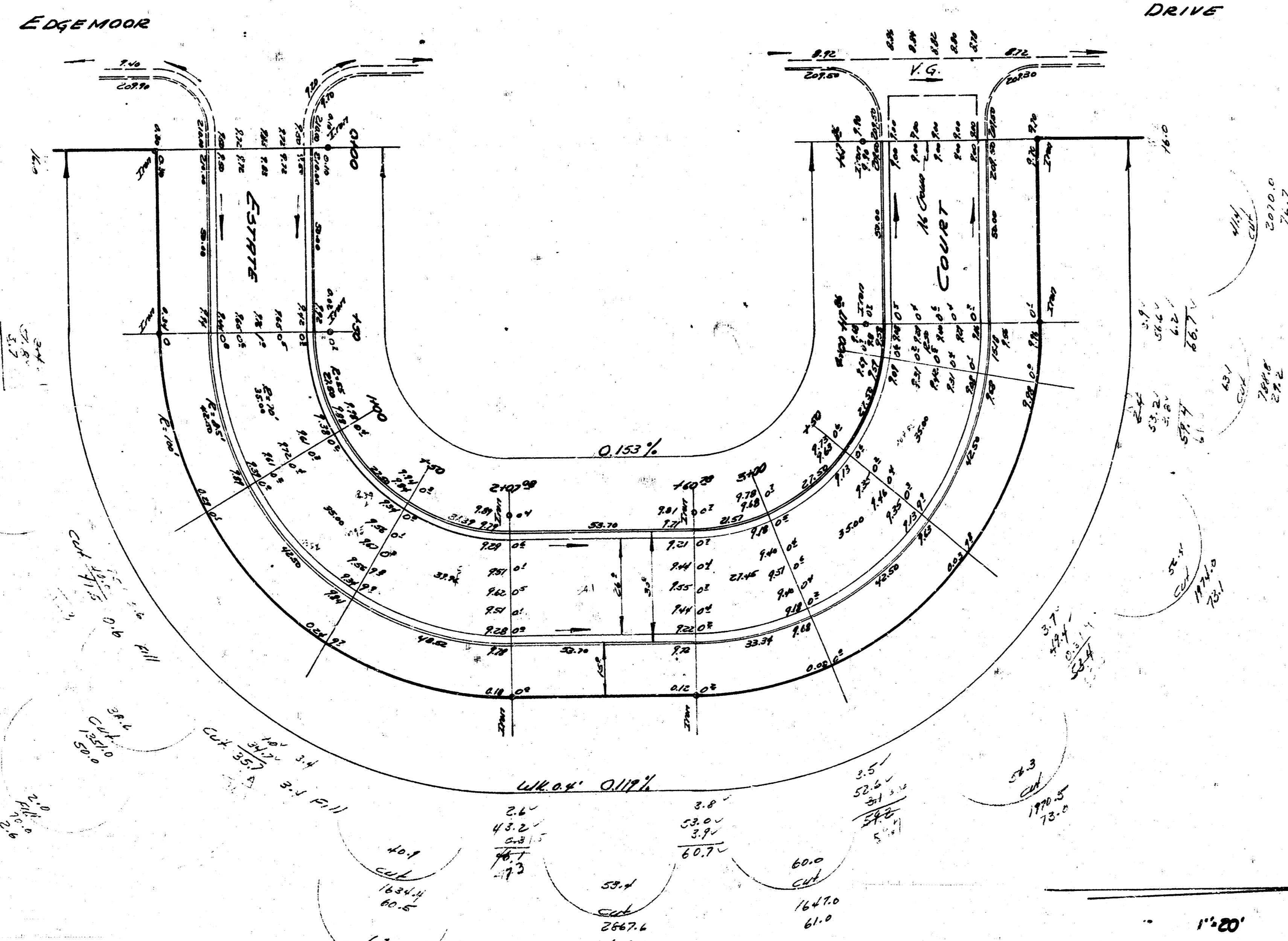


2 M. N. Co. Moeller P.P. N.W. Cor. Edgemoor, Pa. 6-21-93
 S.M. S.E. Cor. Plat 566 N. Ford Man. S.E. Cor. 12th & Edgemoor-26-34

NOTE: Stationing on S.-E.-f N.R.



Total Excav. =

| City | Prop. | Cut | Fill |
|-------|-------|----------------|--------------|
| None | | 182.6 | 5.5 |
| 4.10% | | 26.3 | 1.4 |
| | | 208.9 cu. yds. | 6.9 cu. yds. |

ESTATE COURTS
 EL EDGEMOOR TO EL EDGEMOOR
 26-2-30 A.C.

CITY OF WICHITA, KANSAS
 B.E. SMITH CITY ENGINEER
 JAN. 30, 1953 Proj. No. 02-251

1/2" = 100'
 1/4" = 50'
 1/8" = 25'

3 3 1 1