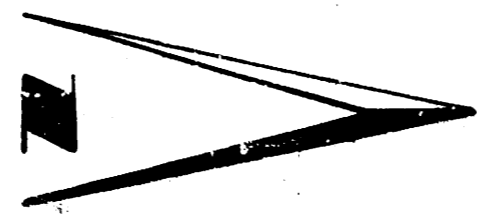


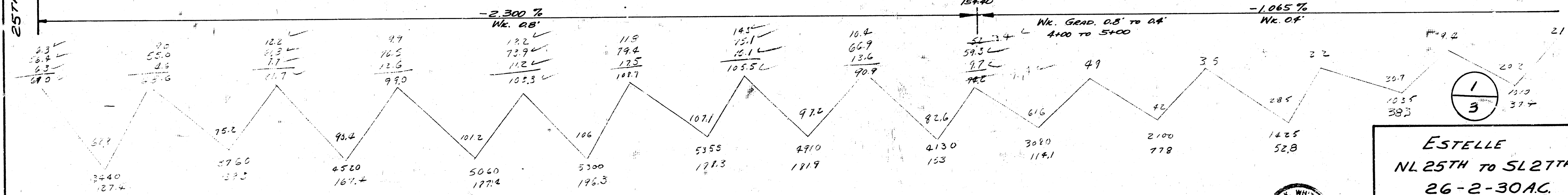
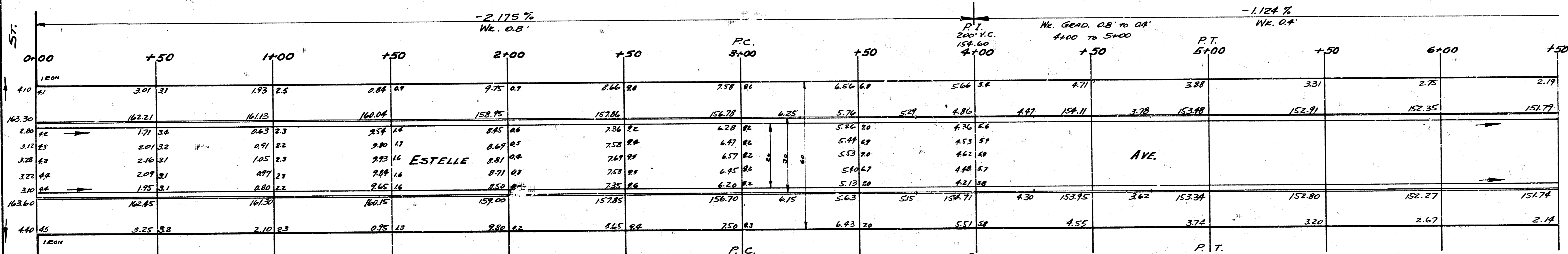
68-7

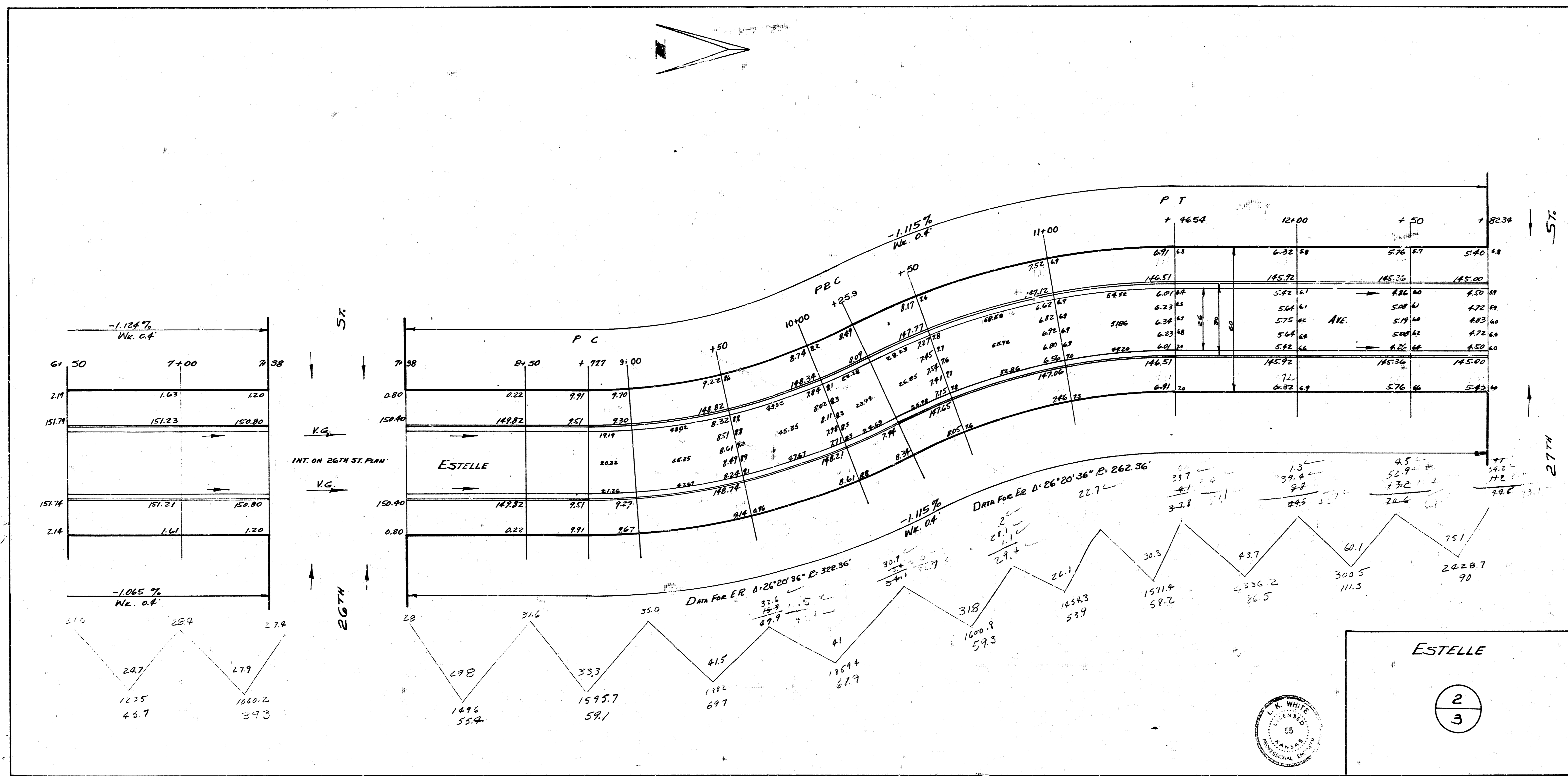
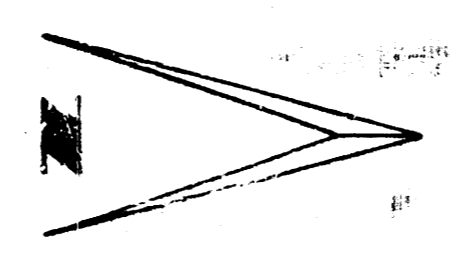
B.M. 168.76 KNIVED 60" SPIKE WS Cor. Post @ 25TH & WILSON NORTH

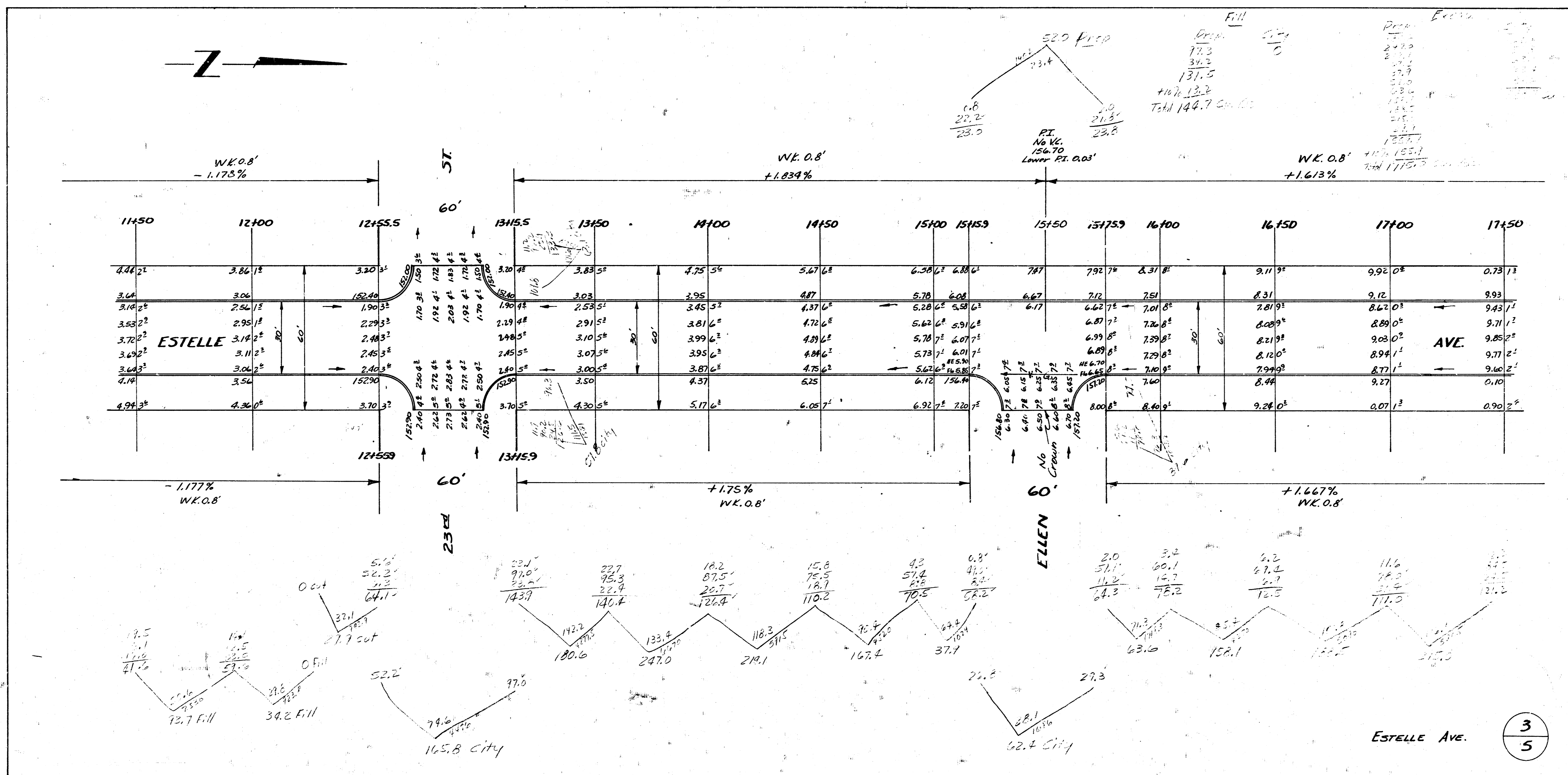
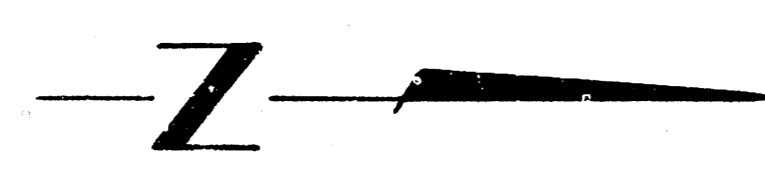
STATIONING ON E.R.



PROPERTY
24687
+1070 2667
2715.6 CU YDS ELEVATION



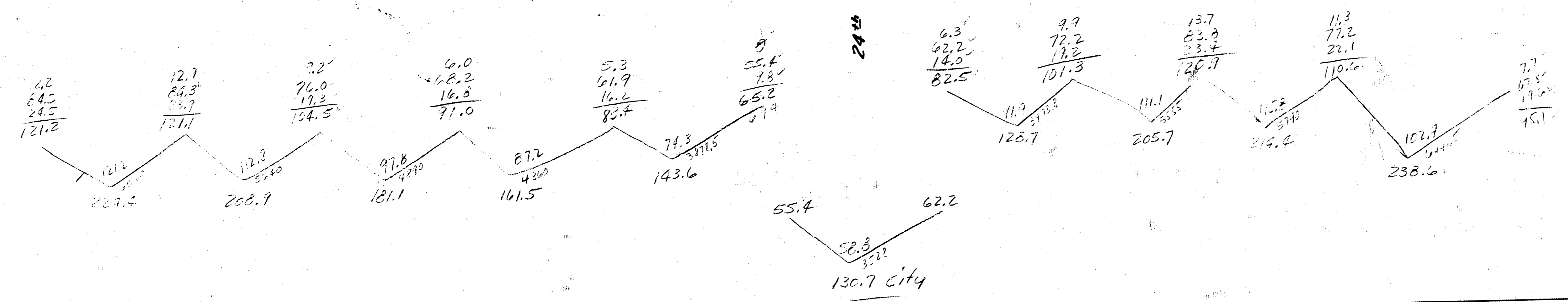
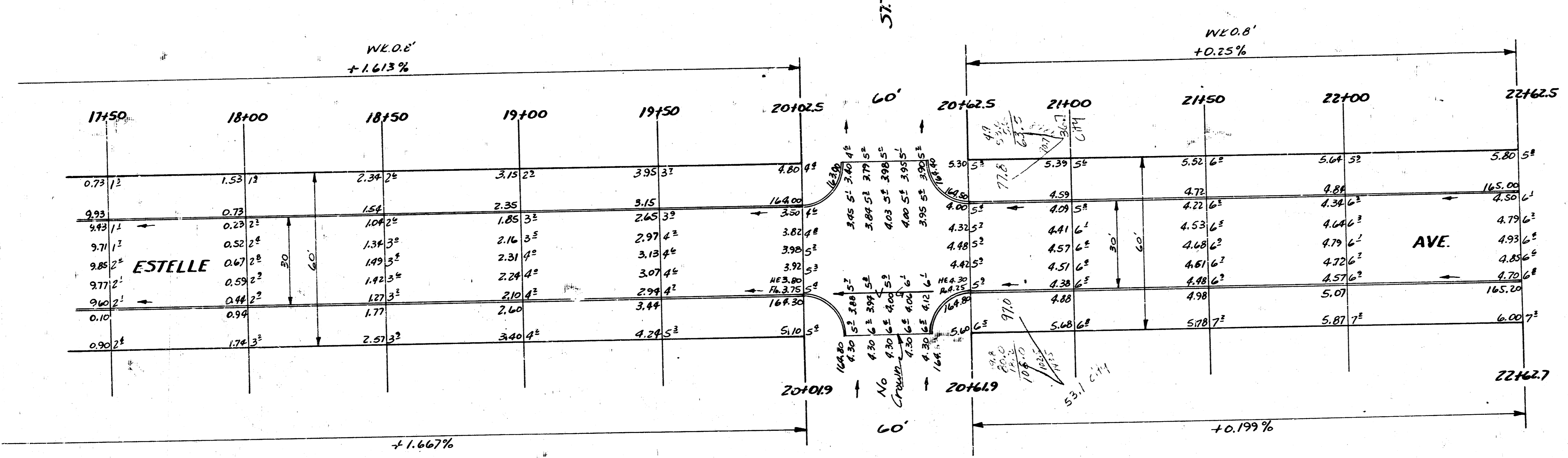






Excavation

CITY	170.7	222.4
	22.1	209.7
	30.7	199.1
	220.5	191.5
	22.1	143.6
	12.1	131.5
	20.7	214.7
	22.0	232.6
	170.7	232.6
	170.7	232.6
	1577.2	232.6



ESTELLE AVE

4
5

