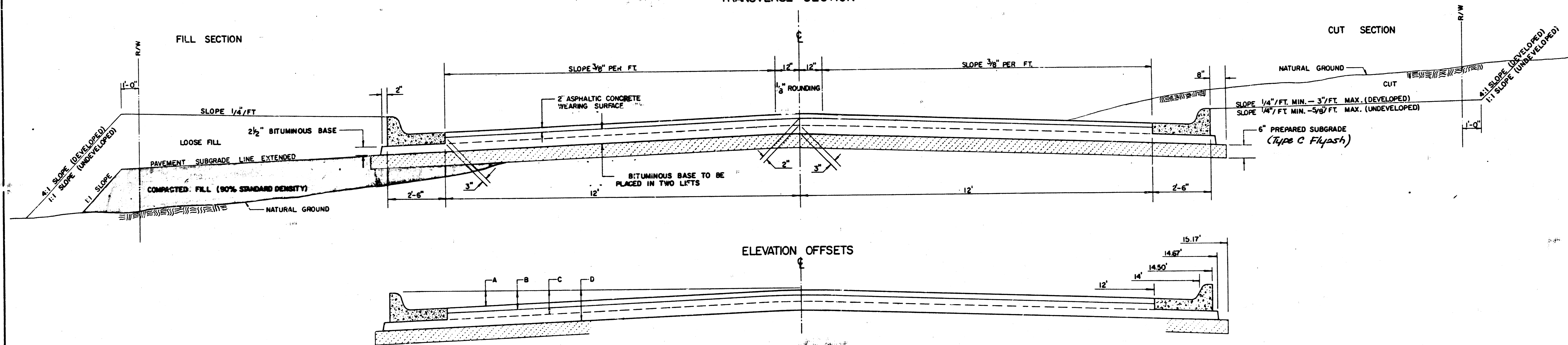


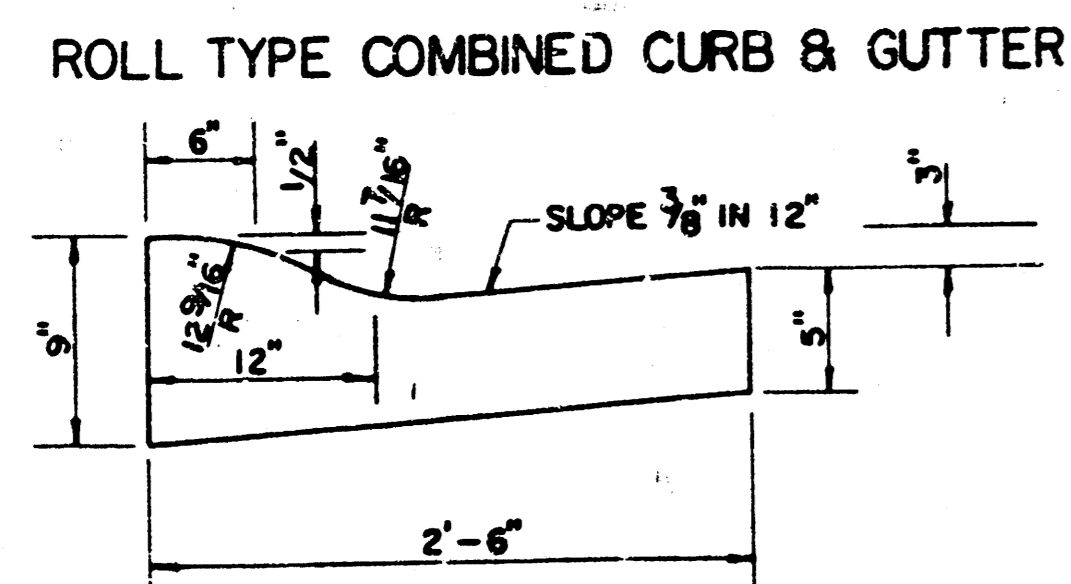
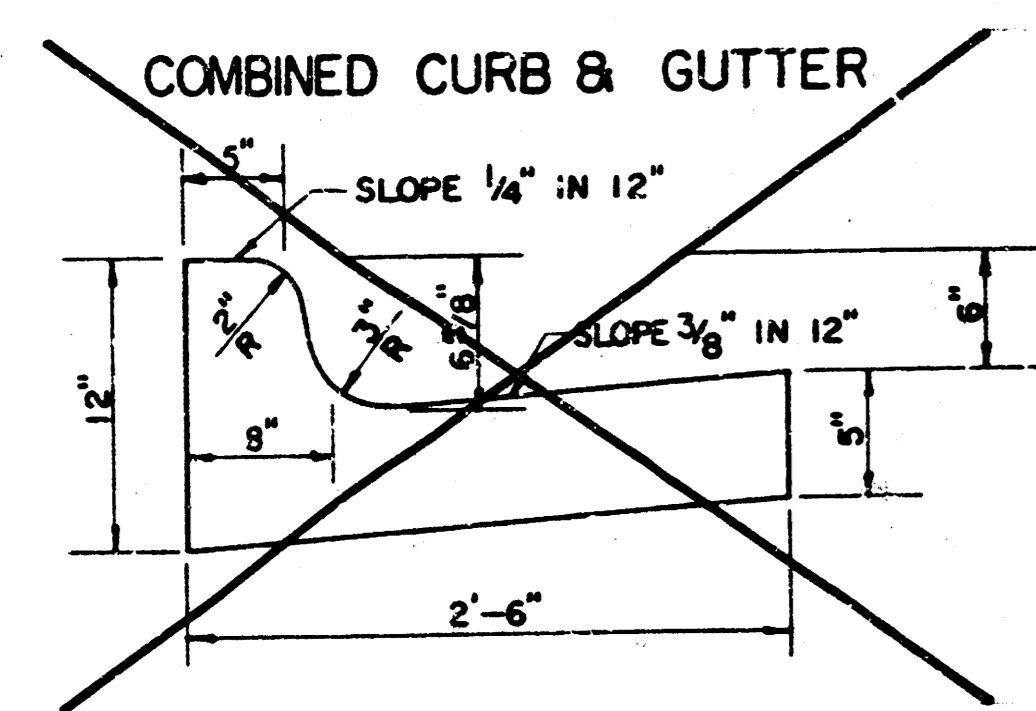
TYPICAL 29' PAVEMENT DETAILS

TRANSVERSE SECTION

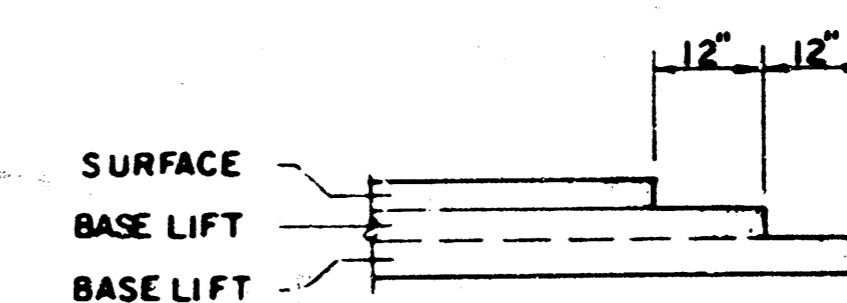


ELEVATION OFFSETS

	DISTANCE FROM CENTERLINE (LT. & RT.)												
	0'	2'	4'	6'	7'	8'	10'	12'	14'	14.5'	14.67'	15.17'	
A: TOP OF CURBS TO TOP OF SURFACE LIFT	0.13	0.18	0.24	0.30	0.33	0.36	0.43	0.49	—	—	—	—	
B: TOP OF CURBS TO TOP OF UPPER BASE LIFT	0.30	0.35	0.41	0.47	0.50	0.53	0.60	0.66	—	—	—	—	
C: TOP OF CURBS TO TOP OF LOWER BASE LIFT	0.47	0.52	0.60	0.68	0.71	0.75	0.83	0.90	0.98	1.00	1.01	—	
D: TOP OF CURBS TO TOP OF SUBGRADE	0.72	0.77	0.84	0.91	0.94	0.98	1.05	1.12	1.19	1.21	1.21	1.23	



TRANSVERSE CONSTRUCTION JOINTS

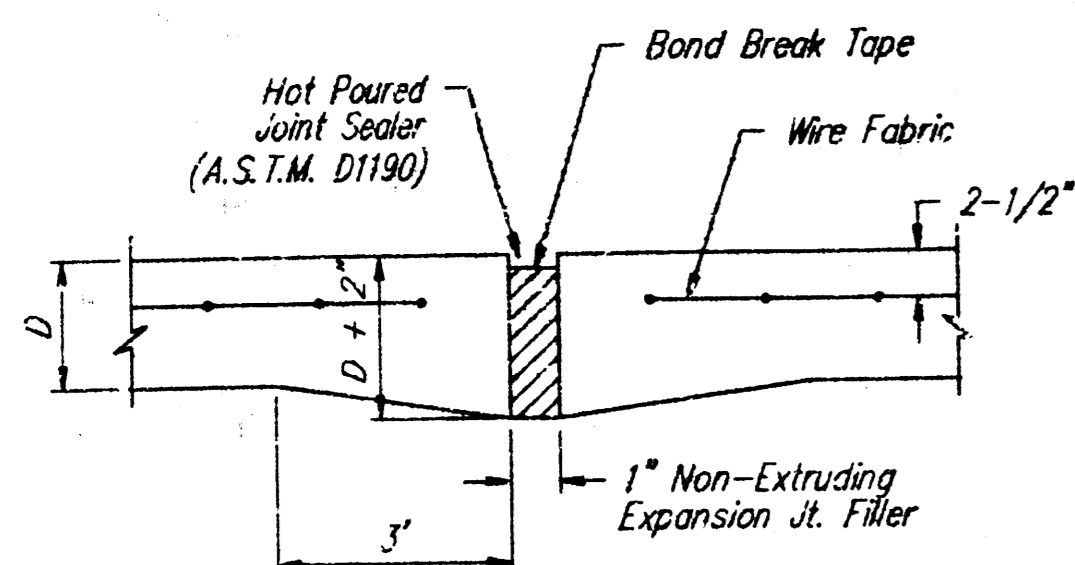


TRANSVERSE CONSTRUCTION JOINTS SHALL BE CONSTRUCTED IN FLEXIBLE BASE PAVEMENTS AT LOCATIONS WHERE PAVEMENT JOINS EXISTING FLEXIBLE BASE PAVEMENT AS SHOWN BY THE DETAIL. ALL COSTS ASSOCIATED WITH THE CONSTRUCTION OF THE TRANSVERSE JOINT SHALL BE INCLUDED IN THE BID PRICE FOR SQUARE YARDS (7" ASPHALTIC CONCRETE (5" BITUMINOUS BASE)).

GENERAL NOTES

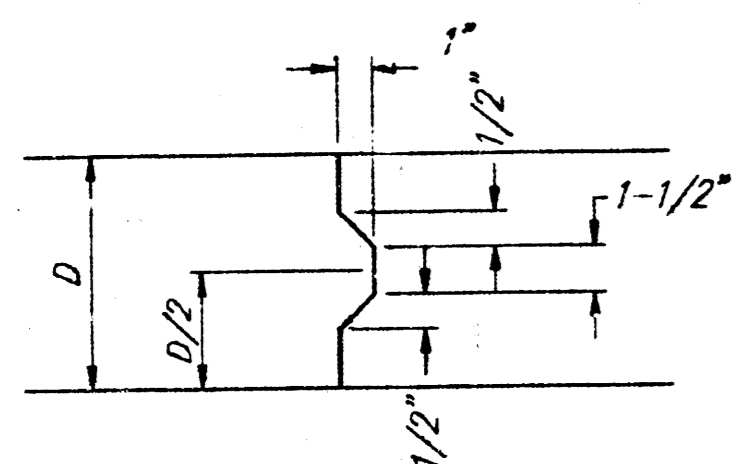
- 1) THE ASPHALTIC CONCRETE PAVEMENT BETWEEN THE COMBINED CURB AND GUTTER SHALL BE PAID AS SQUARE YARDS OF 7" ASPHALTIC CONCRETE (5" BITUMINOUS BASE).
- 2) THE BITUMINOUS BASE UNDER AND BEHIND THE COMBINED CURB AND GUTTER SHALL BE PAID AS SQUARE YARDS OF 2 1/2" BITUMINOUS BASE.
- 3) A TACK COAT OF EMULSIFIED ASPHALT (SC-1H OR CSS-1H) SHALL BE APPLIED AT AN APPROXIMATE RATE OF 0.05 GALLONS PER SQUARE YARD BETWEEN EACH LIFT OF ASPHALTIC MATERIAL.
- 4) BITUMINOUS BASE AND ASPHALTIC CONCRETE WEARING SURFACE SHALL BE PLACED WITH A LAYDOWN MACHINE HAVING AUTOMATIC CONTROLS FOR LINE AND GRADE.
- 5) CONSTRUCTION JOINTS IN EACH LIFT SHALL BE STAGGERED A MINIMUM DISTANCE OF ONE (1) FOOT FROM JOINTS IN PRECEDING LIFTS AND PLACED SO THAT A JOINT WILL BE CONSTRUCTED ON THE CENTERLINE OF THE TOP LIFT.
- 6) CONTRACTOR TO BID ONLY ONE SUBGRADE TREATMENT ALTERNATE WHEN ALTERNATES ARE PROVIDED IN THE PROPOSAL AND CONTRACT. THE ALTERNATE CHOSEN BY THE SUCCESSFUL BIDDER SHALL BE USED IN CONSTRUCTING THIS PROJECT.

7 INCH RESIDENTIAL ASPHALTIC CONCRETE
PAVEMENT WITH 5 INCH BITUMINOUS BASE
CITY OF WICHITA, KANSAS
PROJECT NUMBER
472-76-245-82013-000-000-001

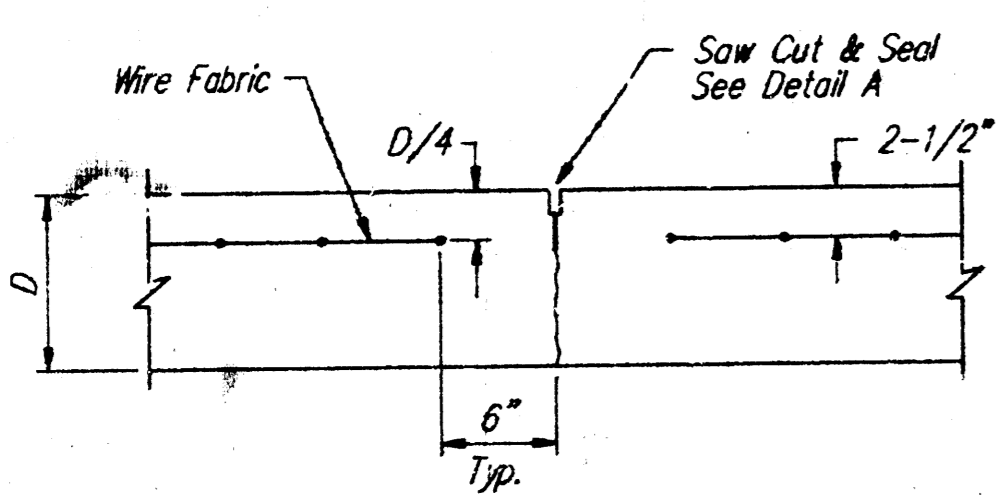


EXPANSION JOINT

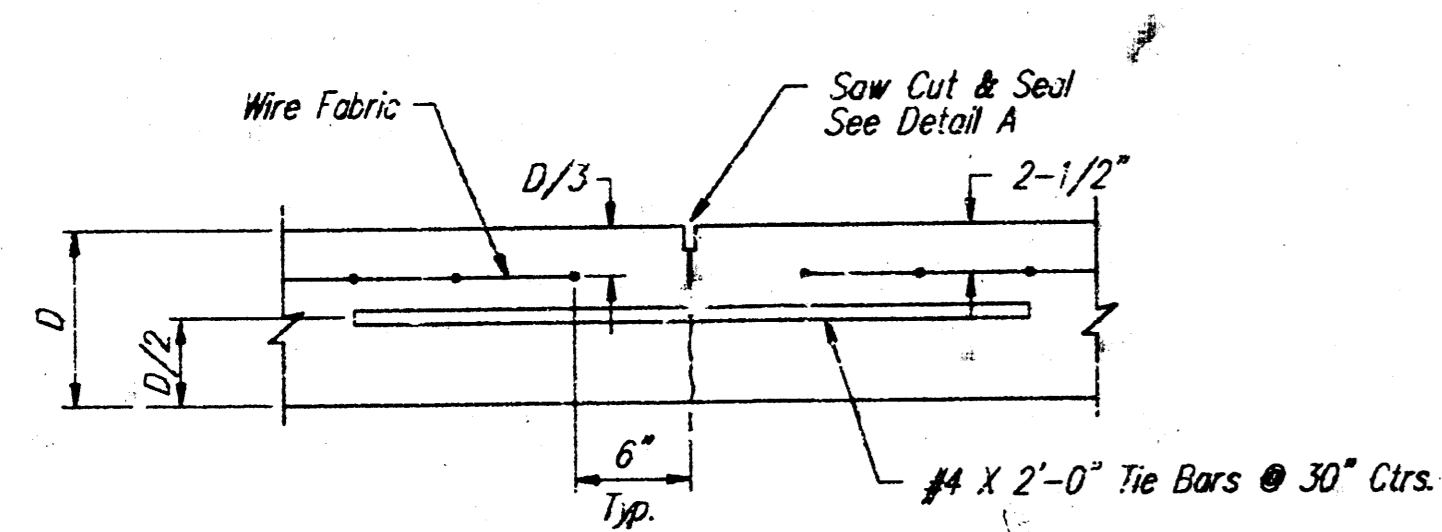
NOTE: Extra thickness to be Subsidiary to Price of Square Yards Pavement



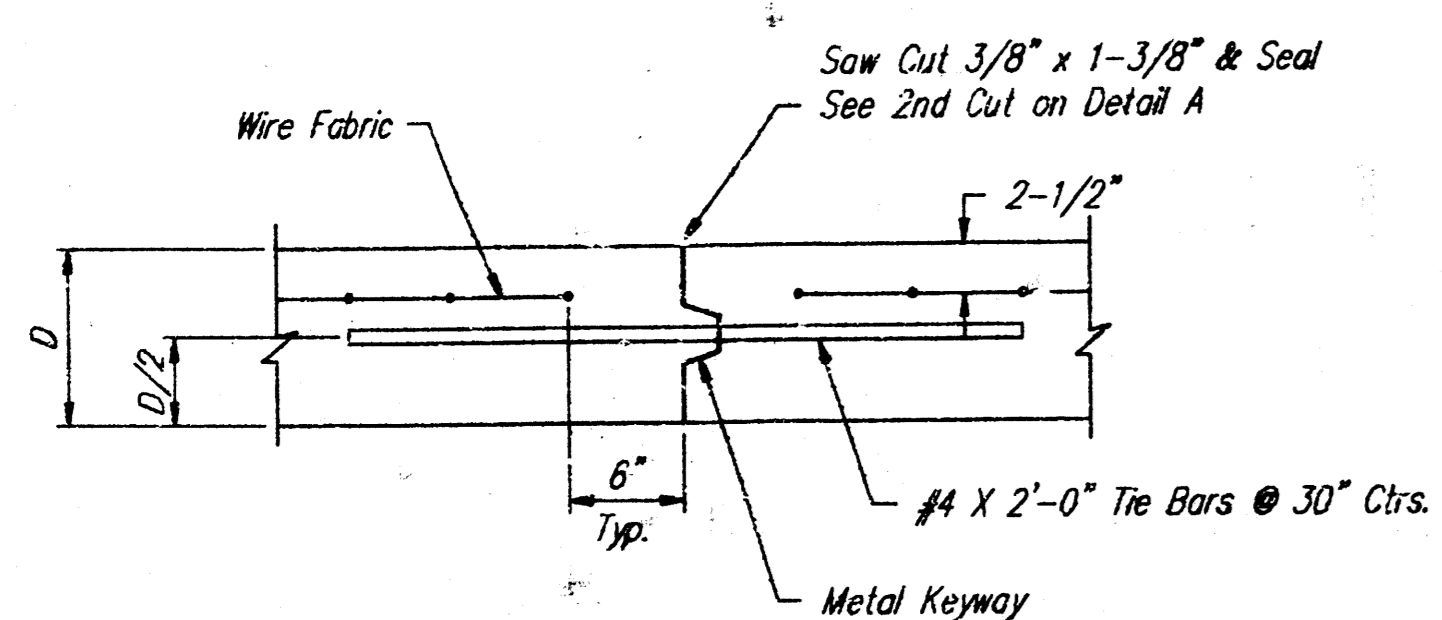
KEYWAY DETAIL



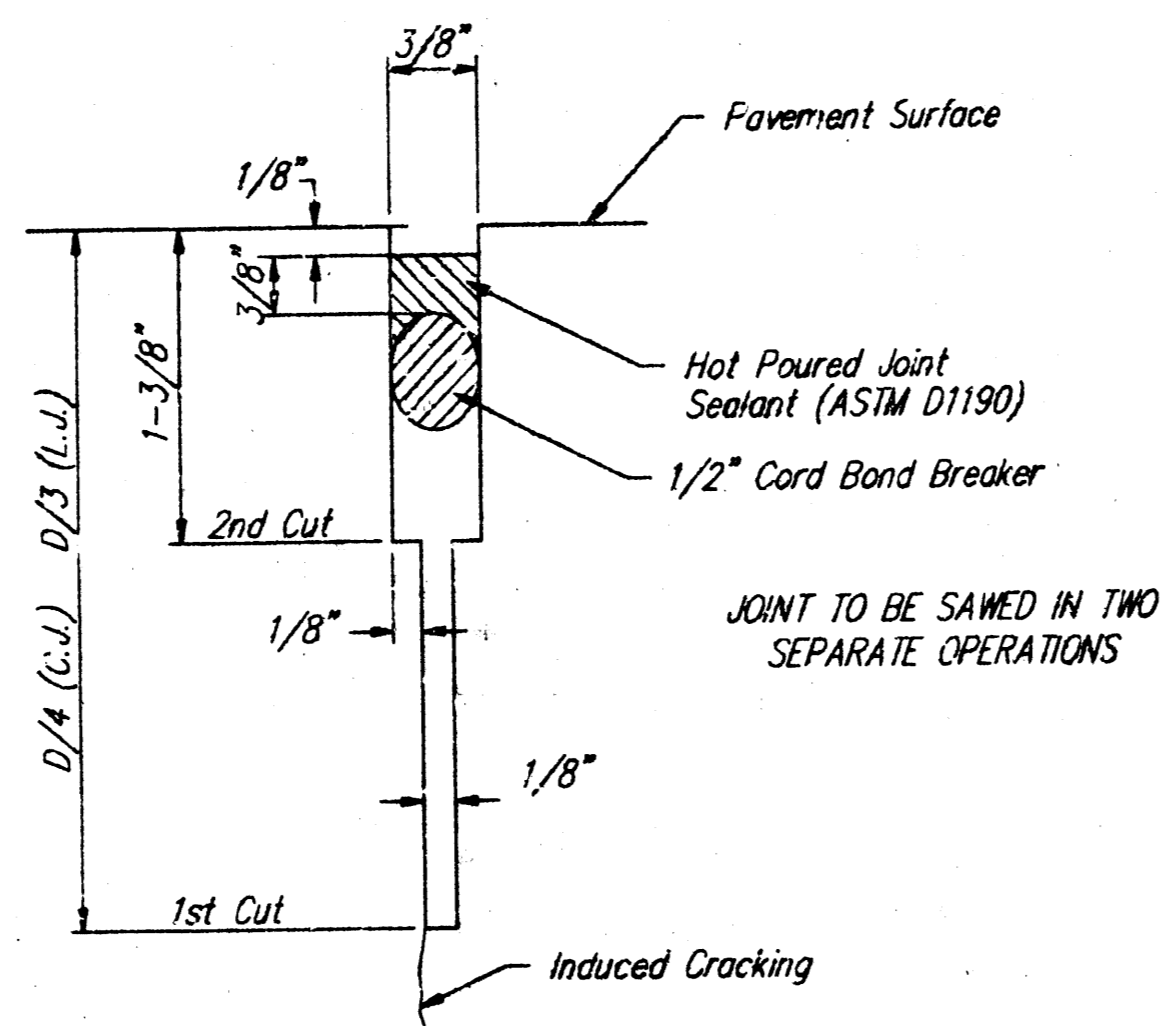
CONTRACTION JOINT DETAIL (C.J.)



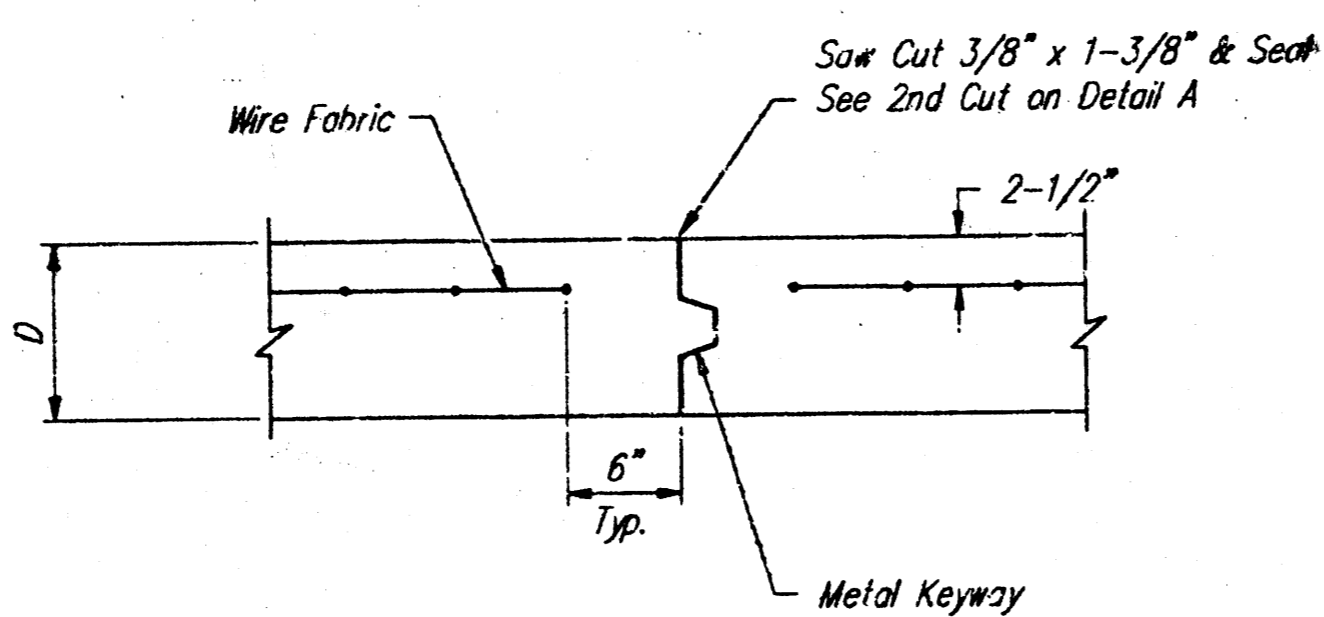
LONGITUDINAL JOINT DETAIL (L.J.)



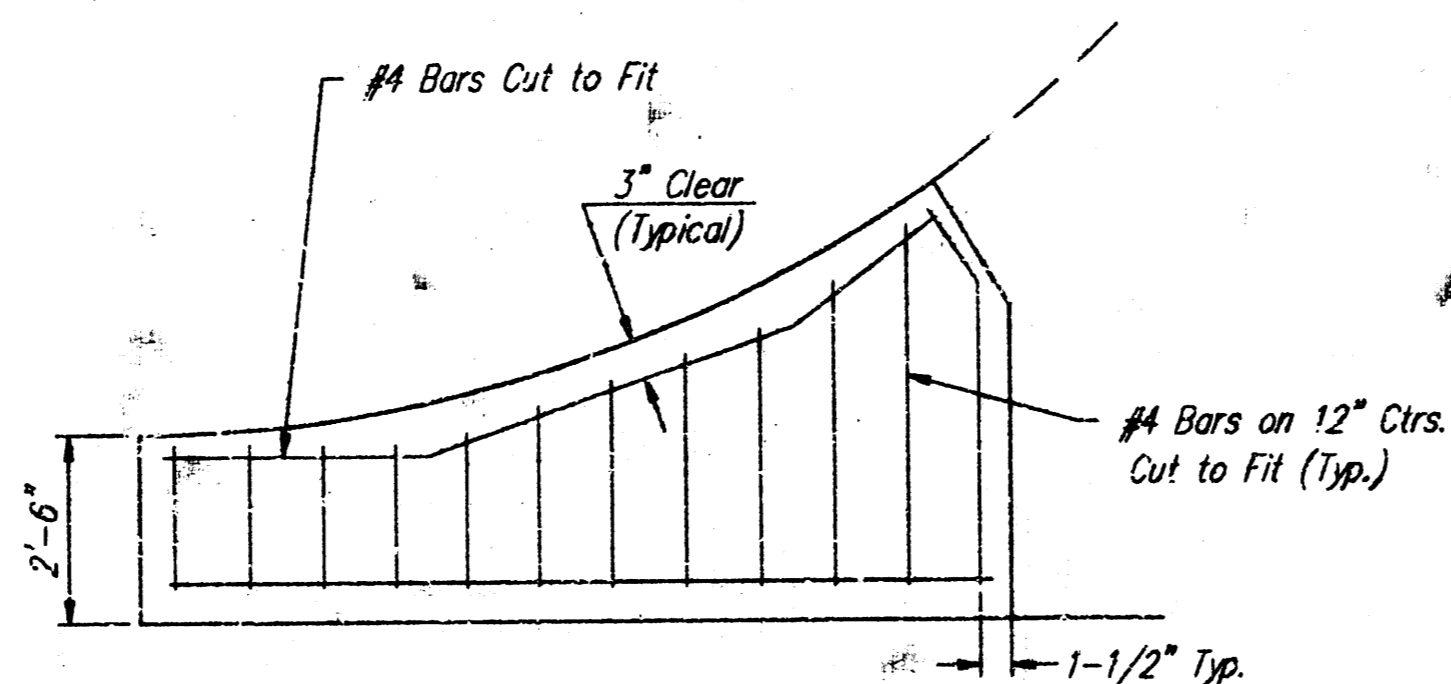
LONGITUDINAL JOINT DETAIL (L.J.)



SAW JOINT DETAIL



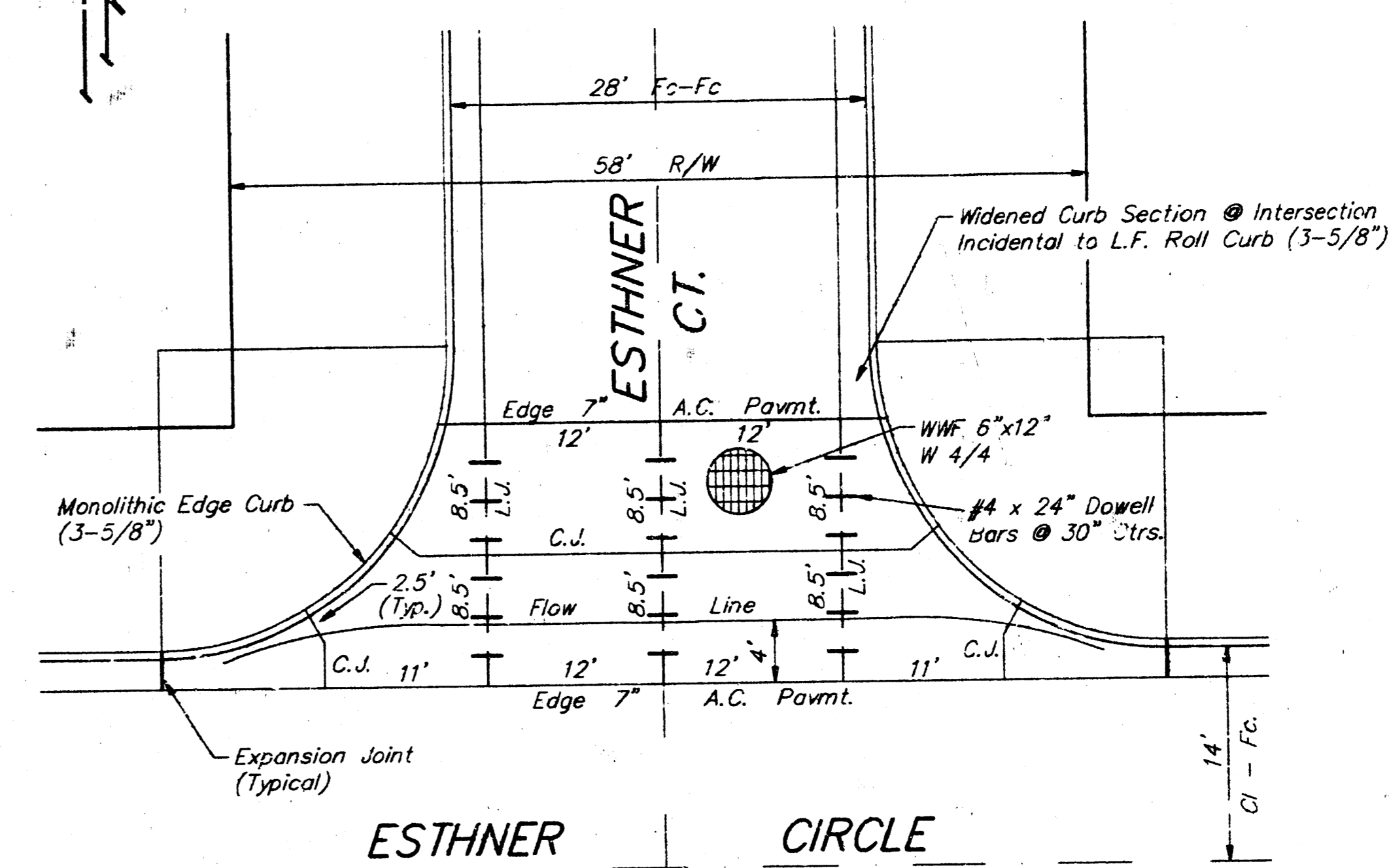
OPTIONAL CONTRACTION CONST. JOINT (C.J.) (ALTERNATE C.J.)



WING REINFORCING DETAIL

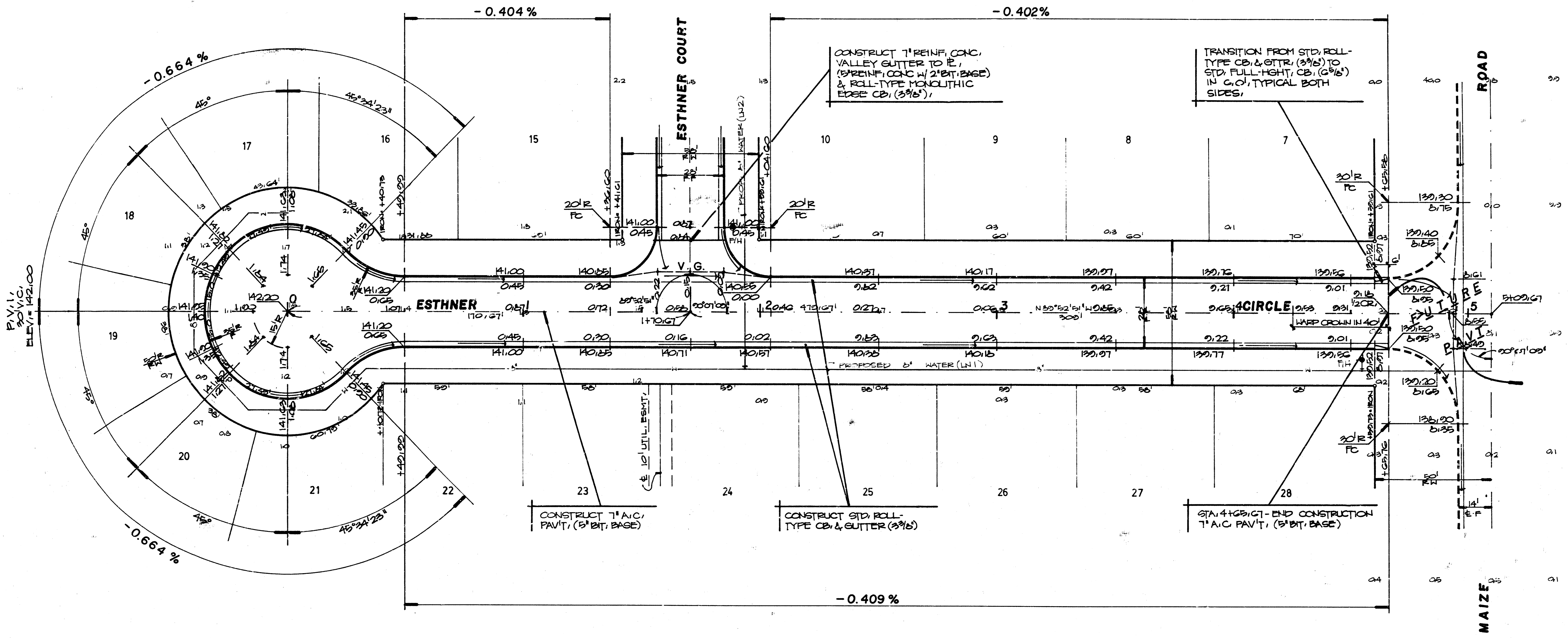
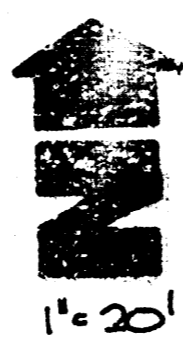


Scale: 1" = 10'



VALLEY GUTTER DETAILS					
BAUGHMAN COMPANY P. A. SURVEYING & ENGINEERING 316/262-7271 • 315 ELLIS • WICHITA, KANSAS 67211					REV.
PROJECT NUMBER 472-76-245-82013-000-000-001					SHEET 3
DESIGN C.M.B.	DRAWN BY C.M.B.	APPROVED N.B.W.	DATE 12/89	SCALE 1" = 10'	OF 7

FILMED FROM THE BEST AVAILABLE COPY



SHARON'S ORCHARD ADDITION

LN.#	STA.	LT.	RT.	V. BOX	BRKR. FLNG.
1	0+00	30.73'		140.60	
1	1+03.67		23'	141.00	
1	4+54.67		23'	139.00	140.17
2	0+33.03		23'	141.00	141.35
2	1+01.45	30.73'		141.05	

EARTHWORK QUANTITIES

Excavation	10717	cy	Compacted Fill	0	cy
+10%	10715		-10%		
Total	11515	cy	Total	0	cy
Subgrade Manipulation	2002	sq			
Borrow Material	0	cy			

- R.R. SPIKE, P-POLE (W.S.) 80' N, NE COR. MAIZE RD. AT MAY AVE. 49' E & MAIZE RD. ELEV. = 140.65 C.D.
- R.R. SPIKE, ES. HLP 10' N & 80' W. SW COR. LT. 1, BLK. 2 SHARON'S ORCHARD ADDN. ELEV. = 142.02 C.D.
- R.R. SPIKE, ES. P-POLE 71'S & 48.5' W NW COR. LOT 18, BLK. 1 SHARON'S ORCHARD ADDN. ELEV. = 140.39 C.D.
- "D" CUT T.C. 5' E, END EXISTG. CB. NS. CARR AVE., NE COR. CARR ST. & MAIZE RD. ELEV. = 137.56 C.D.

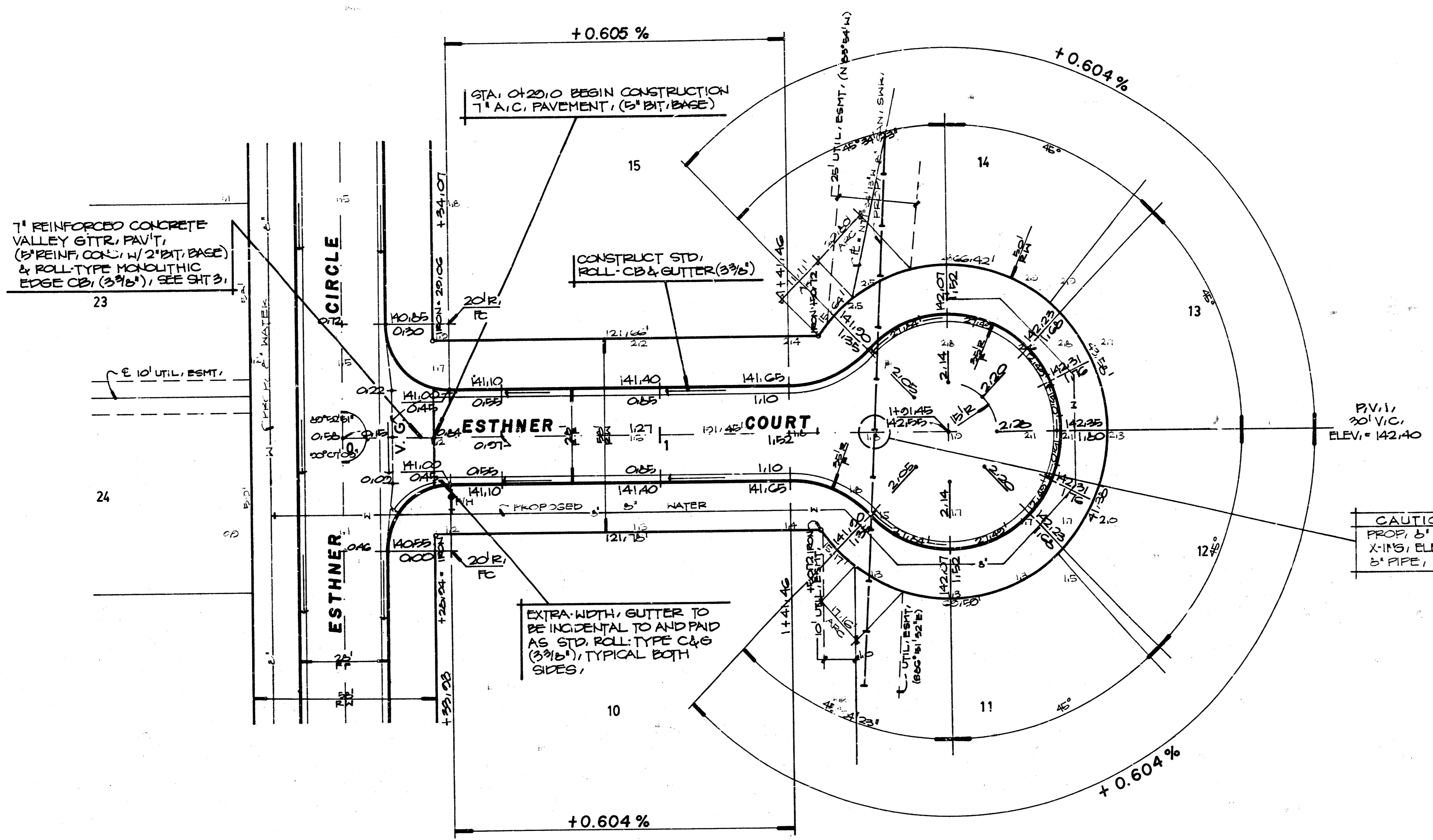
ESTHNER CIRCLE

BAUGHMAN COMPANY P. A.
SURVEYING & ENGINEERING
316/262-7271 • 315 ELLIS • WICHITA, KANSAS 67211

PROJECT NUMBER
472-76-245-82015-000-000-001

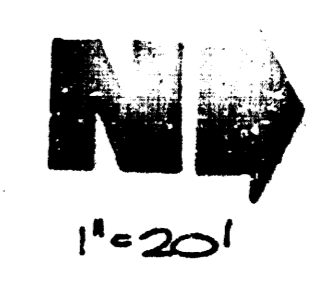
DESIGN	DRAWN	APPROVED	DATE	SCALE	SHEET
JWH	SGD	JWH	7/10	20	4
					OF 7

FILMED FROM THE BEST AVAILABLE COPY



1" REINFORCED CONCRETE VALLEY GTR., PAV'T., (5" REINF. CONC., 1/2" 2" BT, BASE) & ROLL-TYPE MONOLITHIC EDGE CB, (3" 6"), SEE SH'T 3.

NOTE:
STD. ROLL-TYPE CURB & GUTTER (3" 6") TO BE CONSTRUCTED ON THIS PROJECT, EXCEPT AS NOTED.



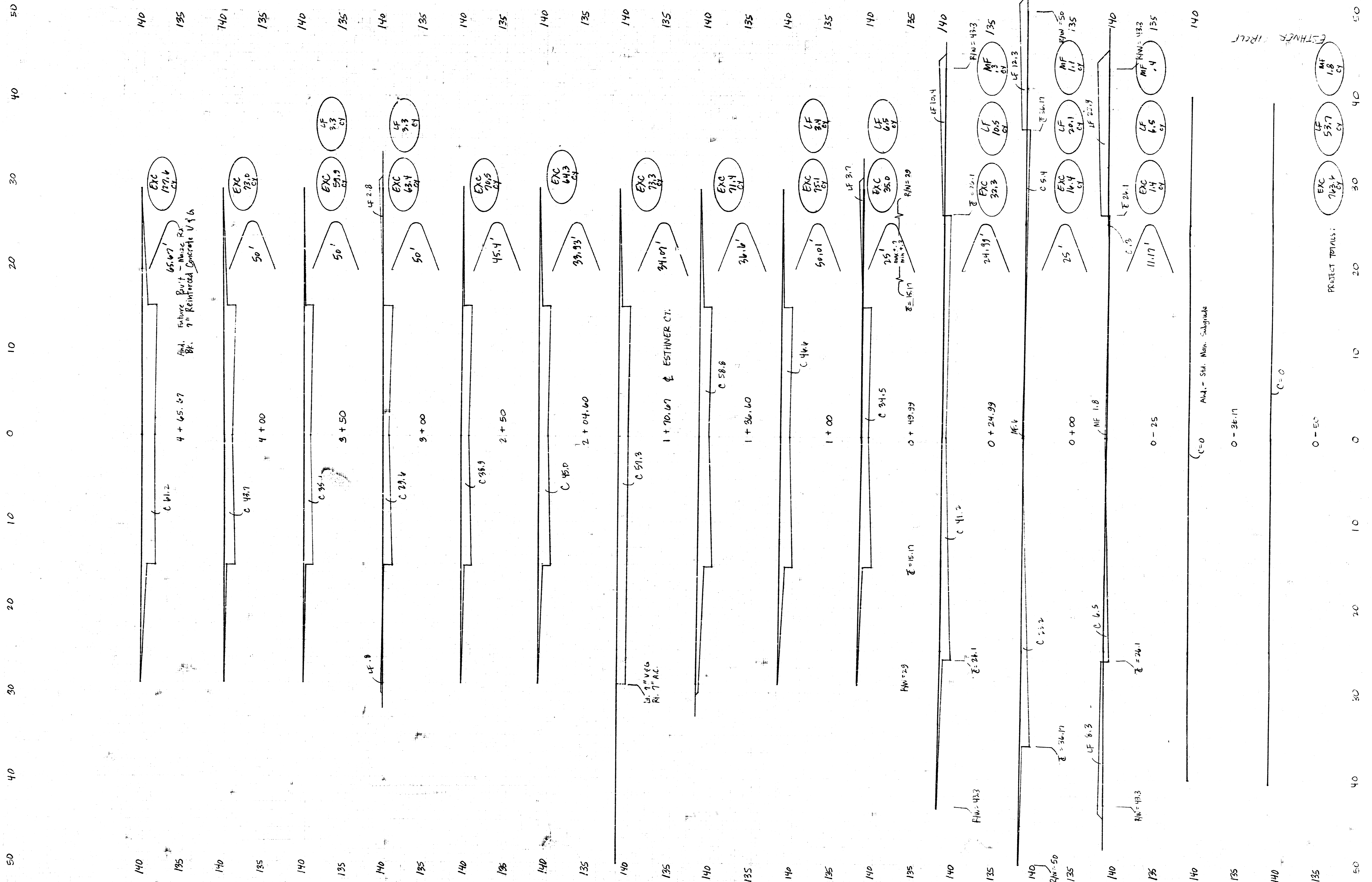
CAUTION!
PROP. 6" SAN, SWR, X-1" INS. ELEV. = 131.14, TOP 6" PIPE.

SHARON'S ORCHARD ADDITION

1. R.R. SPIKE, P-POLE (W.S.) 80' N. NE COR. MAIZE RD. AT MAY AVE. 49' E & MAIZE RD. ELEV. = 140.85 C.D.
2. R.R. SPIKE, E.S. HLP. 10' N & 80' W. SW COR. LT. 1, BLK. 2 SHARON'S ORCHARD ADDN. ELEV. = 142.02 C.D.
3. R.R. SPIKE, E.S. P-POLE 71' S & 48.5' W. NW COR. LOT 18, BLK. 1 SHARON'S ORCHARD ADDN. ELEV. = 140.39 C.D.
4. "C" CUT T.C. 5' E, END EXSTG. CB. NS. CARR AVE., NE COR. CARR ST. & MAIZE RD. ELEV. = 137.86 C.D.

ESTHNER COURT				
BAUGHMAN COMPANY P. A. SURVEYING & ENGINEERING 316/262-7271 • 315 ELLIS • WICHITA, KANSAS 67211				REV.
PROJECT NUMBER 472-76-245-82013-000-001				SHEET 5
DESIGN NEW	DRAWN SCS	APPROVED NEW	DATE 7/10	SCALE 20
				OF 7

FILMED FROM THE BEST AVAILABLE COPY



C-THINER RCLL

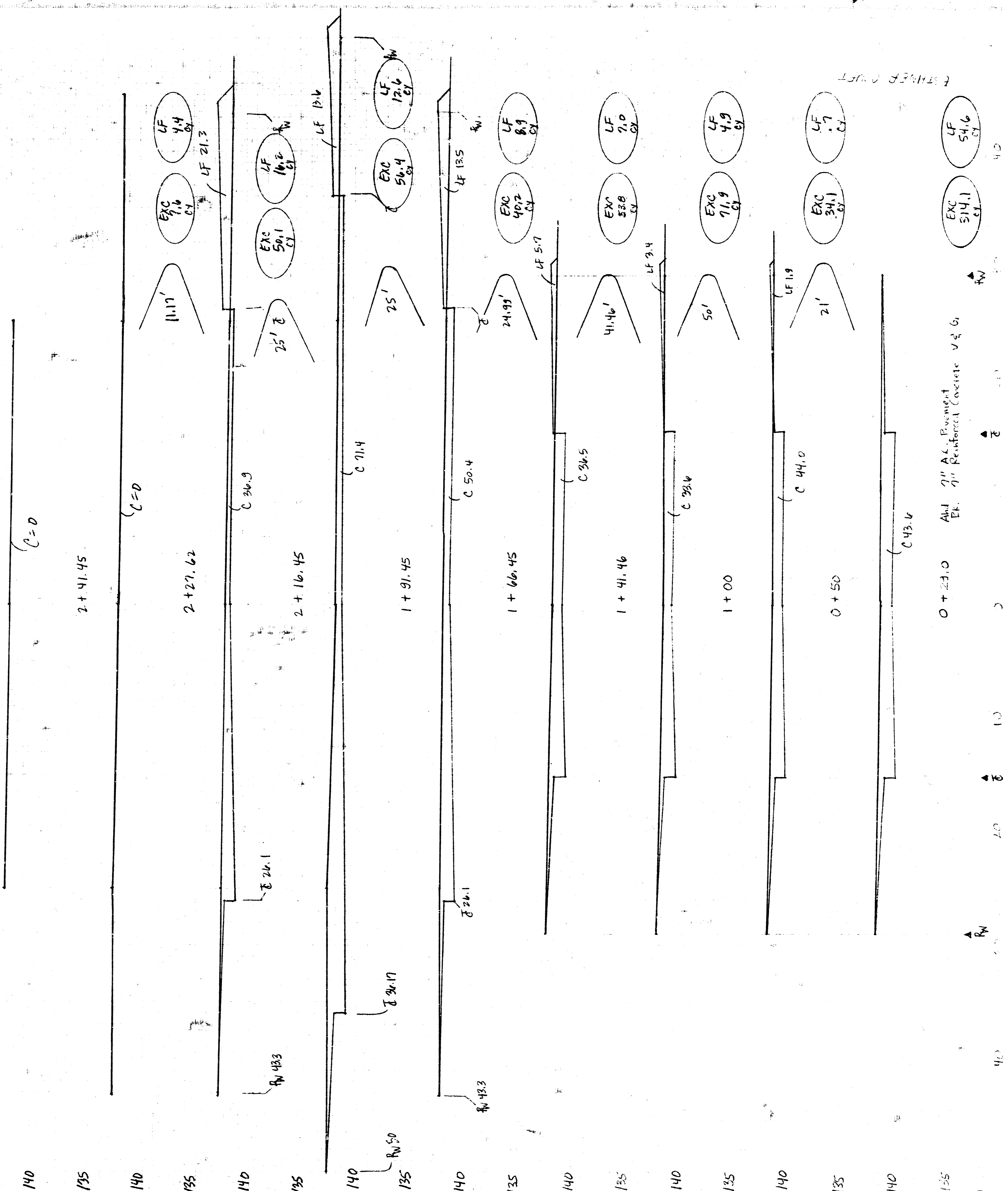
PROJECT TOTALS:

EXC 743.4
CY
LF 537
CY
MF 1.8
CY

FILMED FROM THE BEST AVAILABLE COPY

25

25



472-76-245-82013-000-000-001
 ESTHNER COURT CROSS SECTIONS

FILMED FROM THE BEST AVAILABLE COPY

7