

Broadway Ave.

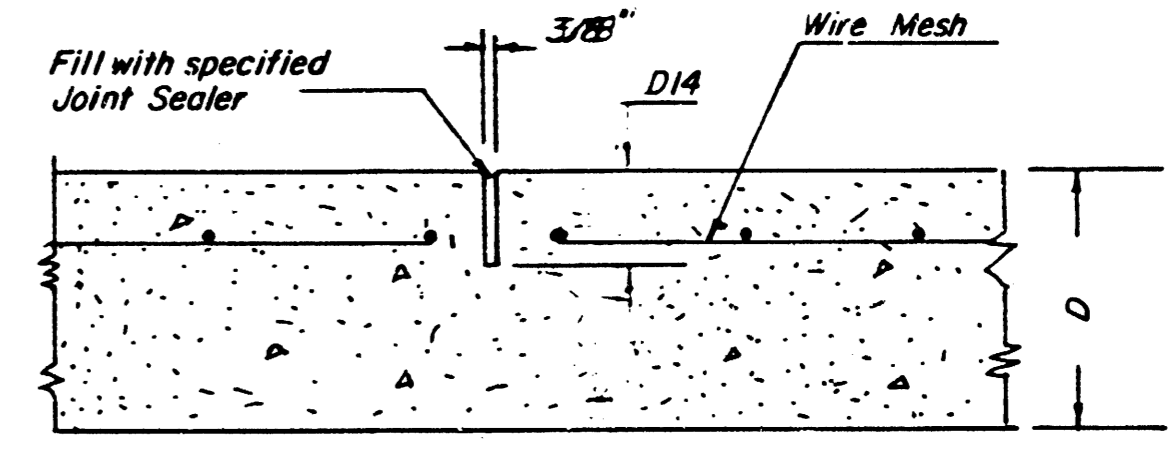
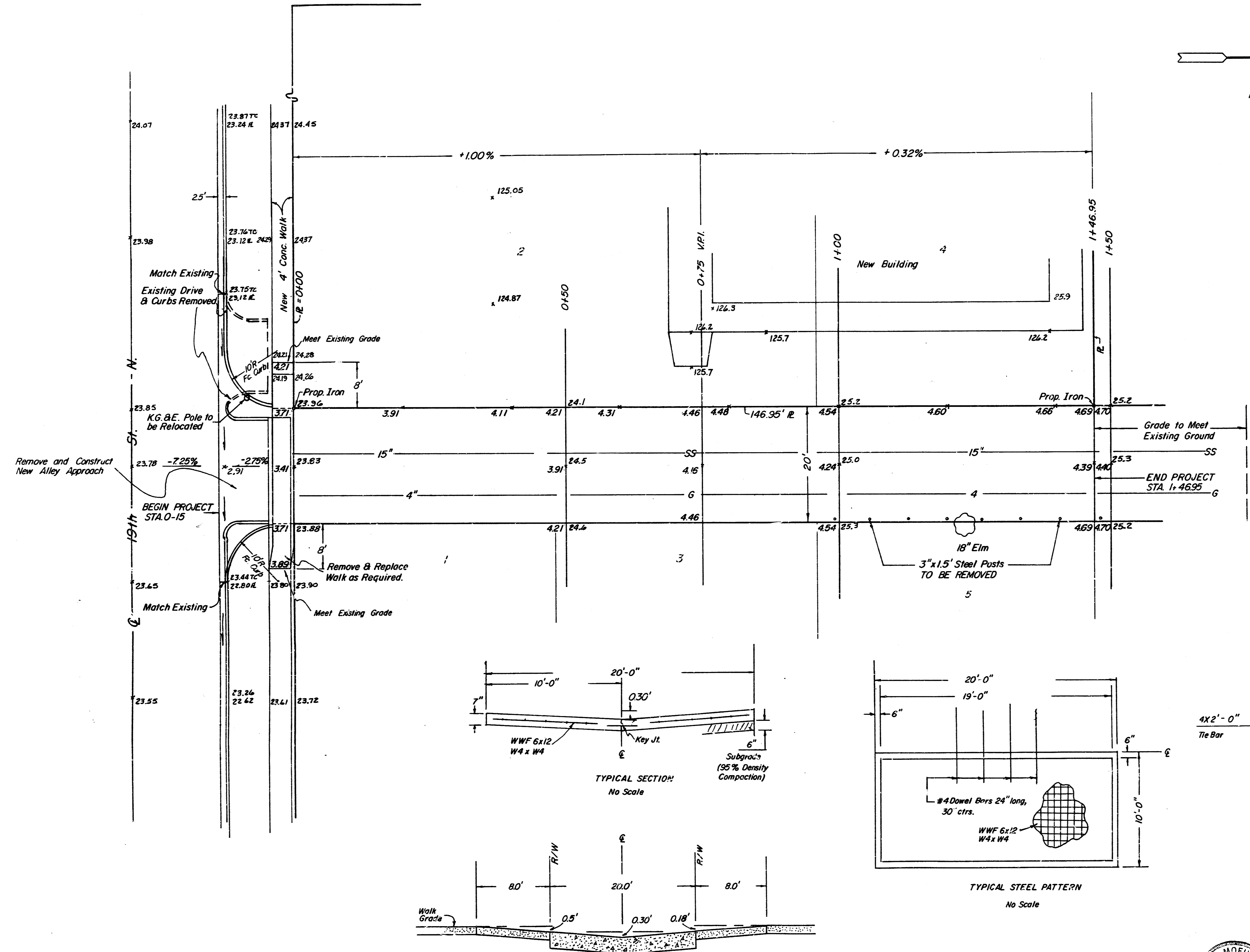
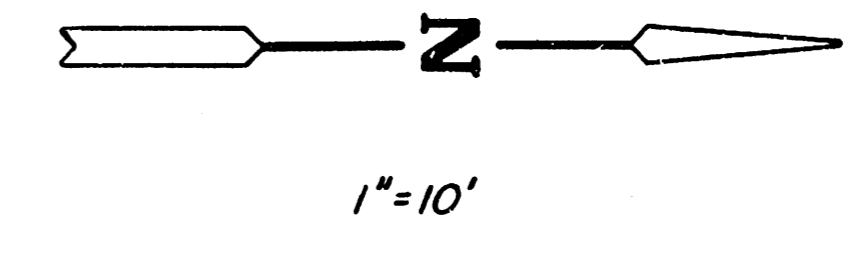
**NOTE TO CONTRACTOR**

This project will be constructed under the supervision of the CITY ENGINEER and conforming to the SPECIFICATIONS of the CITY OF WICHITA. The CONTRACTOR will pay the City of Wichita for all costs of plan review, inspection and booking per contract.

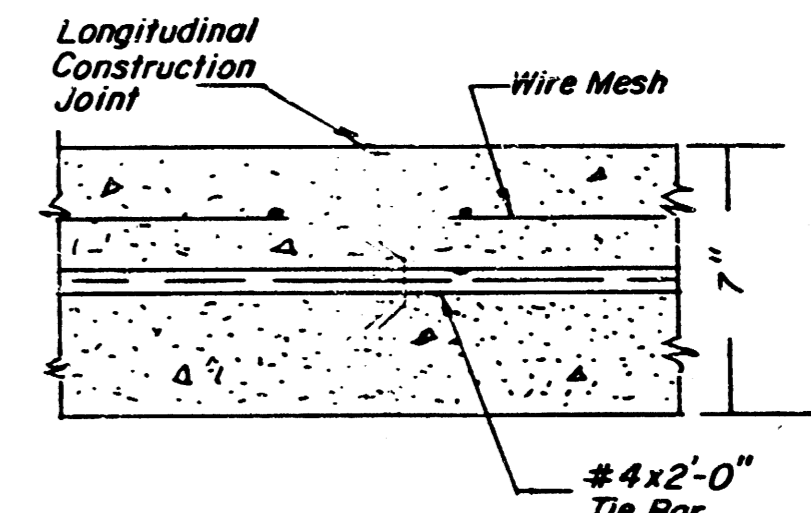
5-21-85

APPROVED AS NOTED  
By CITY ENGINEER OF WICHITA

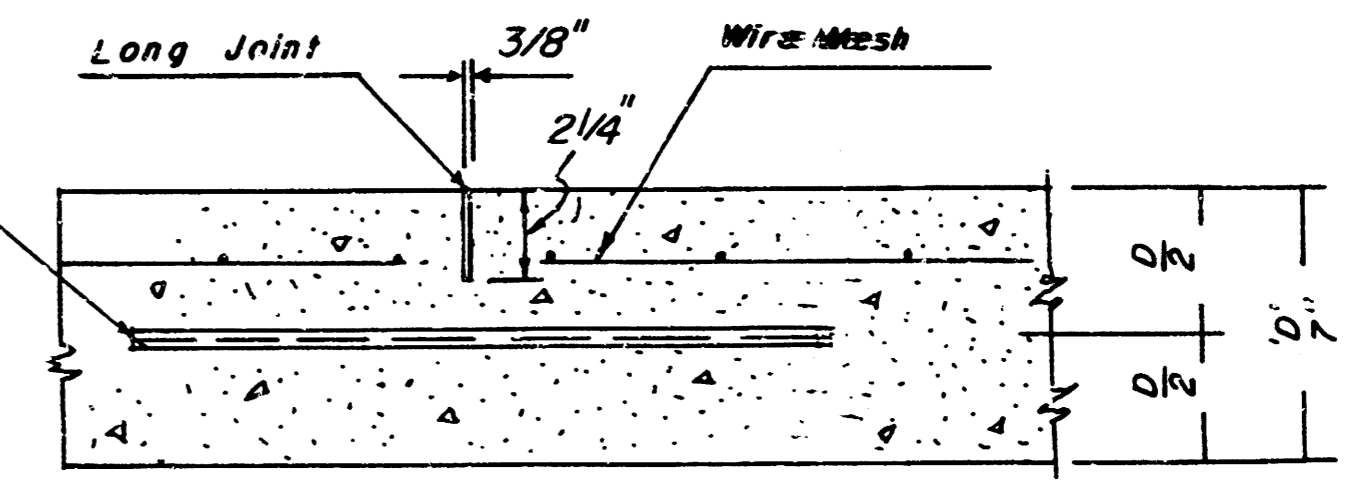
Sanitary Sewers  
Storm Sewers  
Drainage Branches



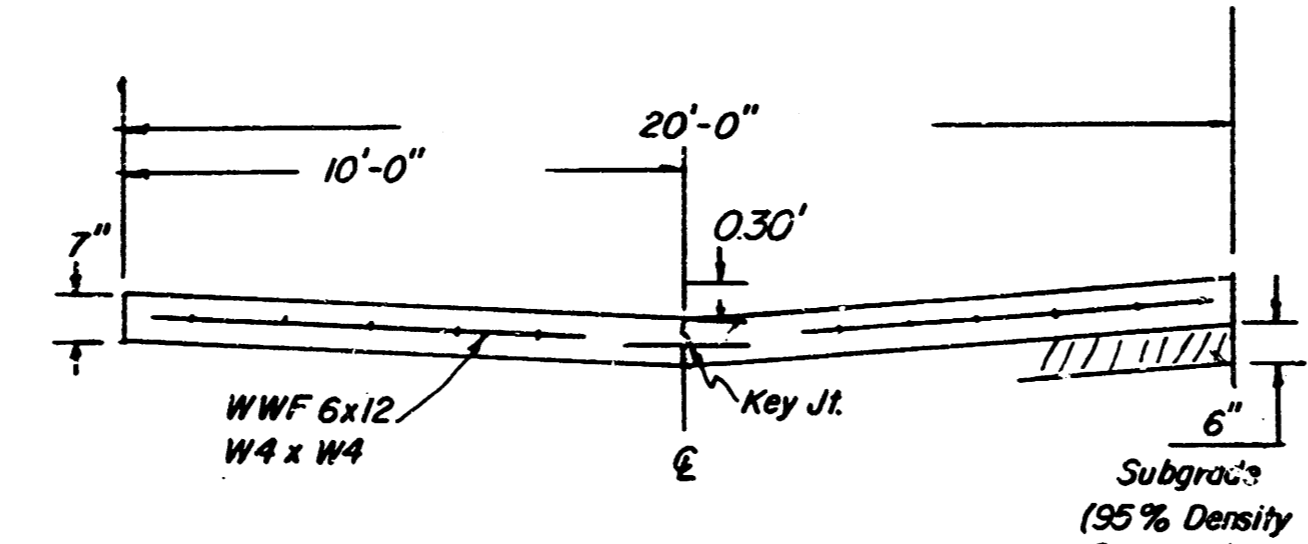
SAWED TRANSVERSE CONTRACTION JOINT AT 20' INTERVALS.



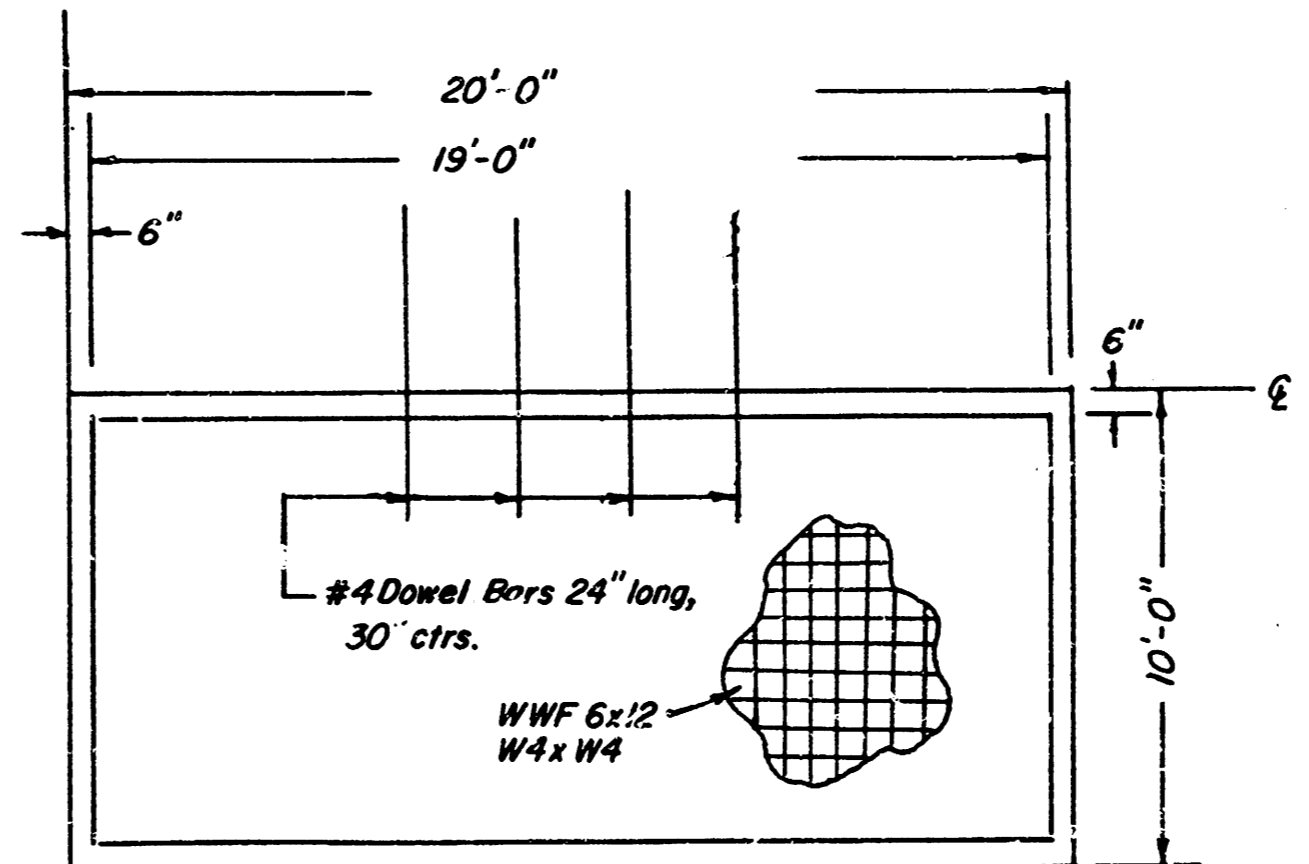
LONGITUDINAL CONSTRUCTION JOINT DETAIL Transverse Section



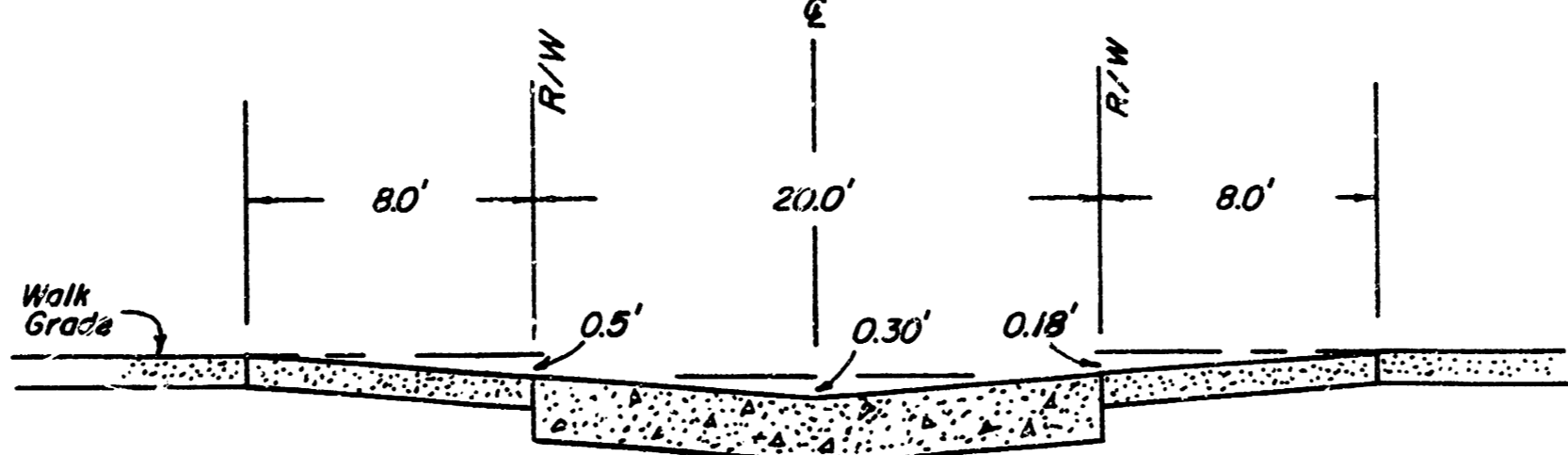
LONGITUDINAL JOINT DETAIL Transverse Section  
NOTE: Longitudinal joint formed by sawing 2 3/4" deep and 3/8" wide and filled as specified in standard specifications.



TYPICAL SECTION: No Scale



TYPICAL STEEL PATTERN No Scale

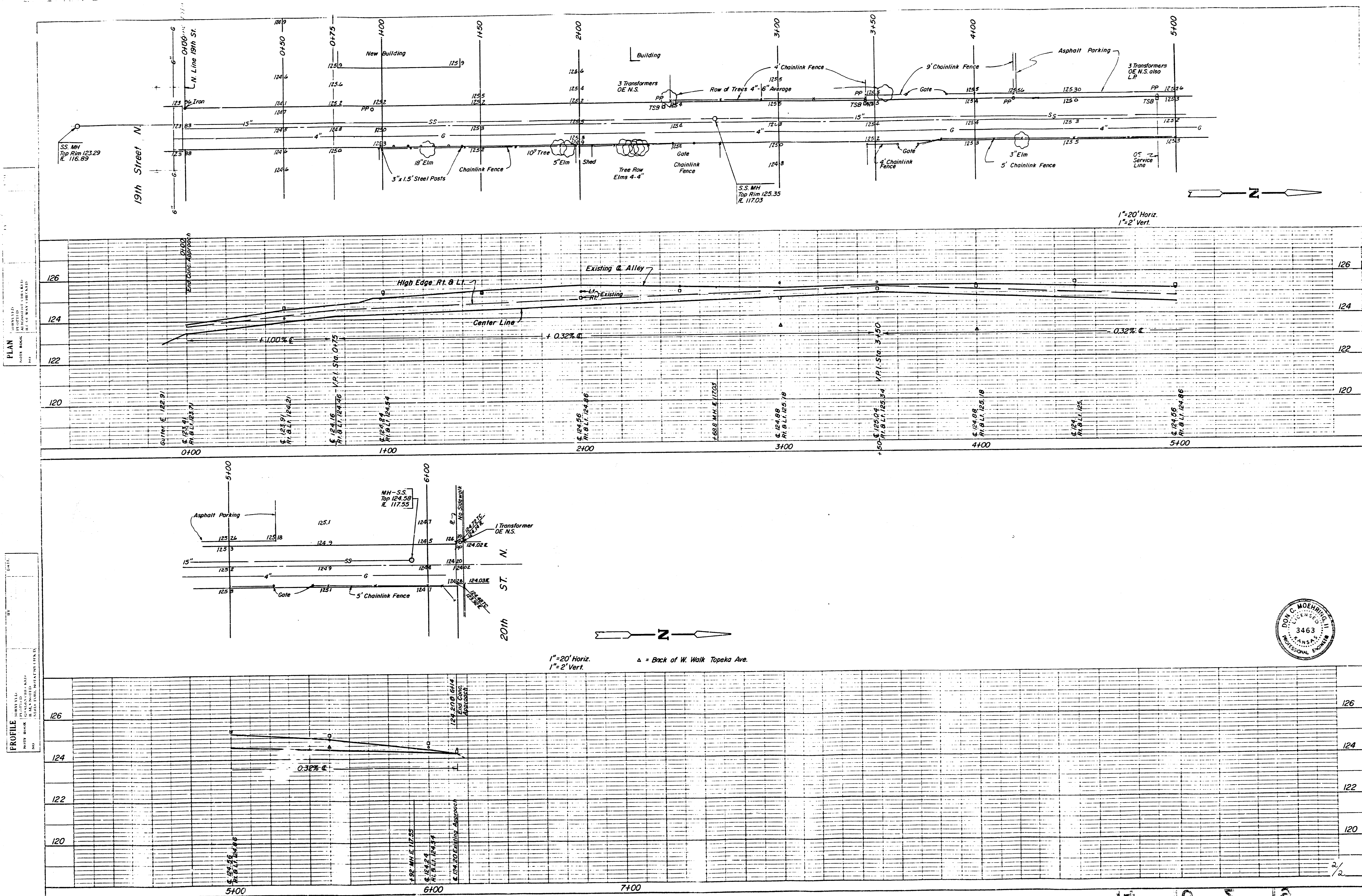


ALLEY APPROACH No Scale Section at Property Line (N. Line 19th St.)

BENCHMARK: 'M' in Mueller on Fire Hydrant S.W. corner Broadway and 19th St. N. Elev. 127.24



**APPROACH & ALLEY**  
**BETWEEN BROADWAY & TOPEKA STREETS**  
From the N.L. 19th Street 150' North  
7" Concrete Pavement 20' Wide  
Project No. 472-76-245-8000+000-000-004  
MIKE LINDEBAEK, CITY ENGINEER  
MOEHRING & ASSOCIATES  
CONSULTING ENGINEERS  
WICHITA  
Revised 7-17-85



PLAN  
 APPROVED: [Signature]  
 DATE: [Date]  
 BY: [Name]

PROFILE  
 APPROVED: [Signature]  
 DATE: [Date]  
 BY: [Name]



1" = 20' Horiz.  
 1" = 2' Vert.  
 Δ = Back of W. Walk Topeka Ave.

14 40 5 10