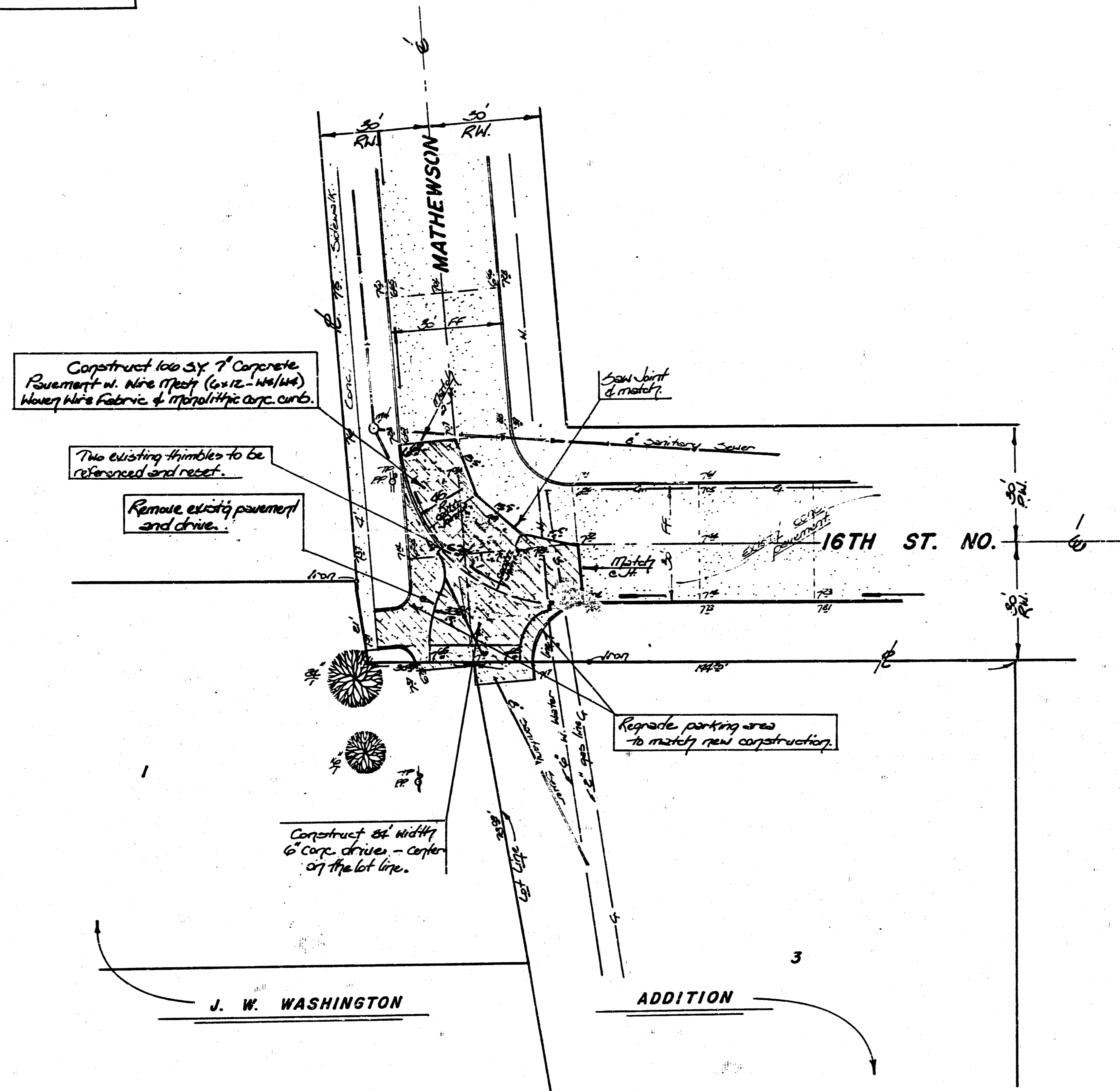


B17 117⁵⁵ Brass Rod in core post 21' E. & 25' N.
 of E. 17th St. No. 2 Addition.
 B17 117⁸⁰ RR spike in 100' 16th & Mathewson
 131' N. & 162' W. of E. Coll.



Note:
 Contractor to co-ordinate location and construct a 6' drive approach off of the new pavement to serve J.W. Washington Addition as indicated on the plan or present an alternate width & location which satisfies the engineer for approval. The subgrade does not require treatment.
 The contractor shall properly sign and barricade the project during construction. The project shall be open to traffic on Sunday which includes the driveway.
 The two thimbles at the intersection shall be reset from ties made for reference prior to beginning the construction.

Symbols
 — G — indicates gas line
 — W — indicates water line
 — — — — — indicates sewer line
 [Hatched Box] indicates pavement or drive removal.

NOTE TO CONTRACTOR
 This project will be constructed under the supervision of the CITY ENGINEER and conforming to the SPECIFICATIONS of the CITY OF WICHITA. The CONTRACTOR will prepay the City of Wichita for all costs of inspection.
 Revised 5-10-85



APPROVED AS NOTED
 By CITY ENGINEER OF WICHITA
 Sanitary Sewers _____
 Storm Sewers _____
 Driveway Approaches P.P.C.

Revised: May 85
INTERSECTION RECONSTRUCTION AT 16TH ST. NO. 2 & MATHEWSON FOR J. W. WASHINGTON ADDITION.
 CITY OF WICHITA, KS.
 PROJ. NO. 472-76-245-80001-000-000-002
BAUGHMAN COMPANY, P.A.
 SURVEYING & ENGINEERING
 316/262-7271 • 330 LAUREL • WICHITA, KANSAS 67211