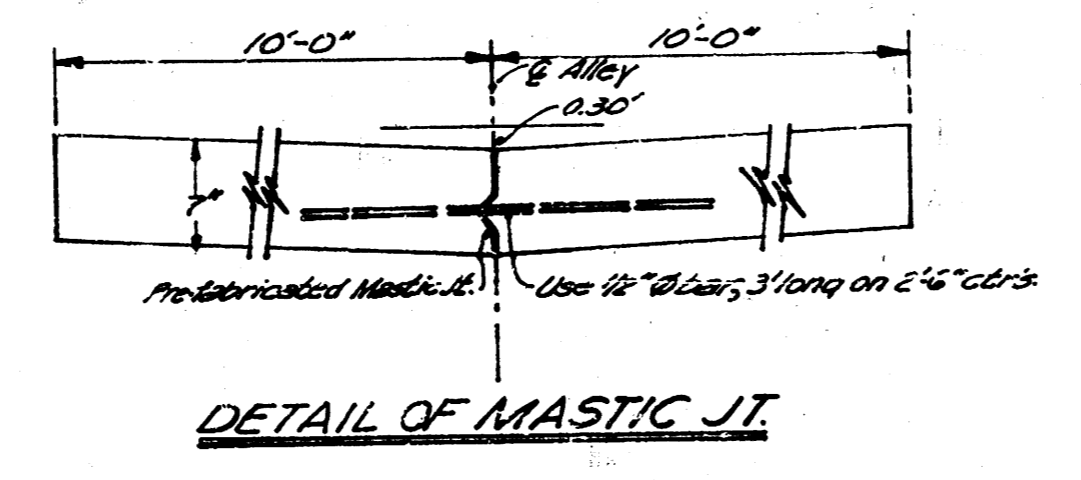
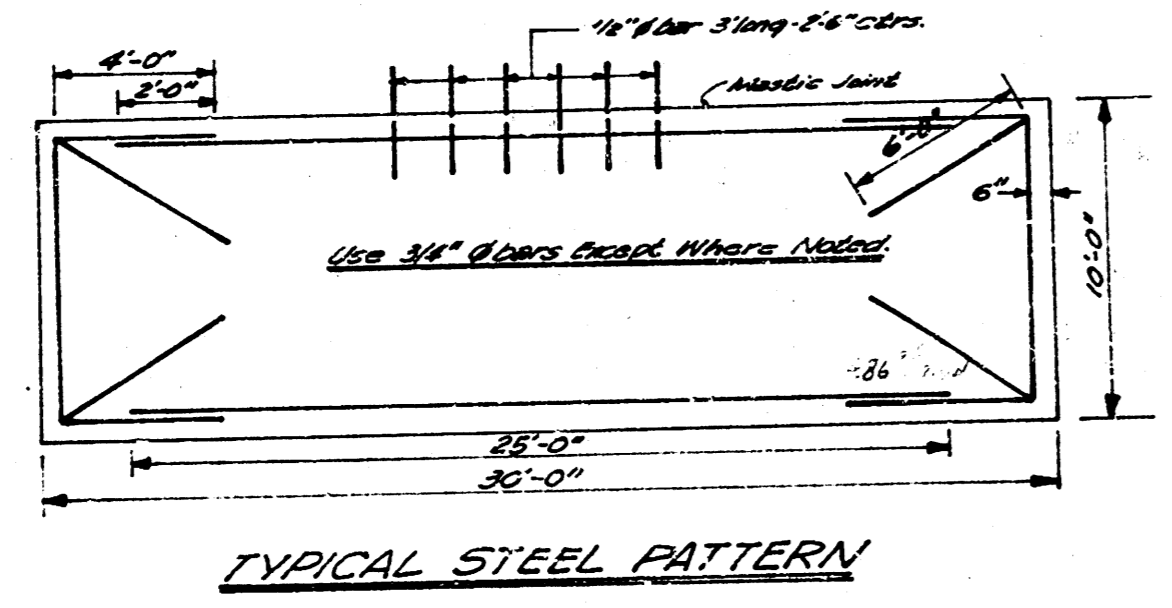
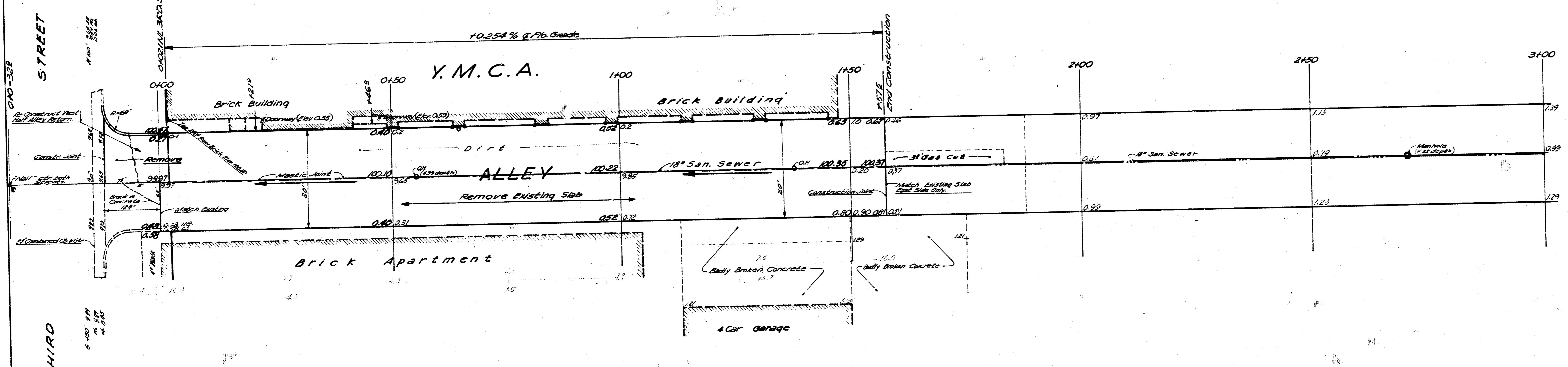


NOTE TO CONTRACTOR
 This project will be constructed under the supervision of the CITY ENGINEER and conforming to the SPECIFICATIONS of the CITY OF WICHITA. The CONTRACTOR will reimburse the City of Wichita for all cost of Engineering, Plans, and Inspection.

B.M. 10034 Ctr. rd. of W. Ret. to Alley So. S.S. 3rd Str. 7' in. Ritchie
 B.M. 10103 S.E. Cor. rec. wall NW Cor. 3rd & Market.
 Base Line - & Alley Between Market & Broadway.



QUANTITIES		
3644	Sq. yds.	7\"/>
489	Cu. yds.	Excavation
77	Lin. Ft.	Separate Curb
90	Lin. Ft.	Reinf. Intersect. Curb
1890	Lin. Ft.	Mastic Joint
1900	Sq. Yds.	Reinf. Slab
1860	Sq. yds.	Concrete Pav. rem.

ALLEY BET. MARKET & BOWY.
 NW. THIRD STREET - 300' W. NW. 3RD.
**20'-7\"/>
 CITY OF WICHITA, KANSAS
 B.E. SMITH CITY ENGINEER
 DATE: PRIVATE CONTRACT**

