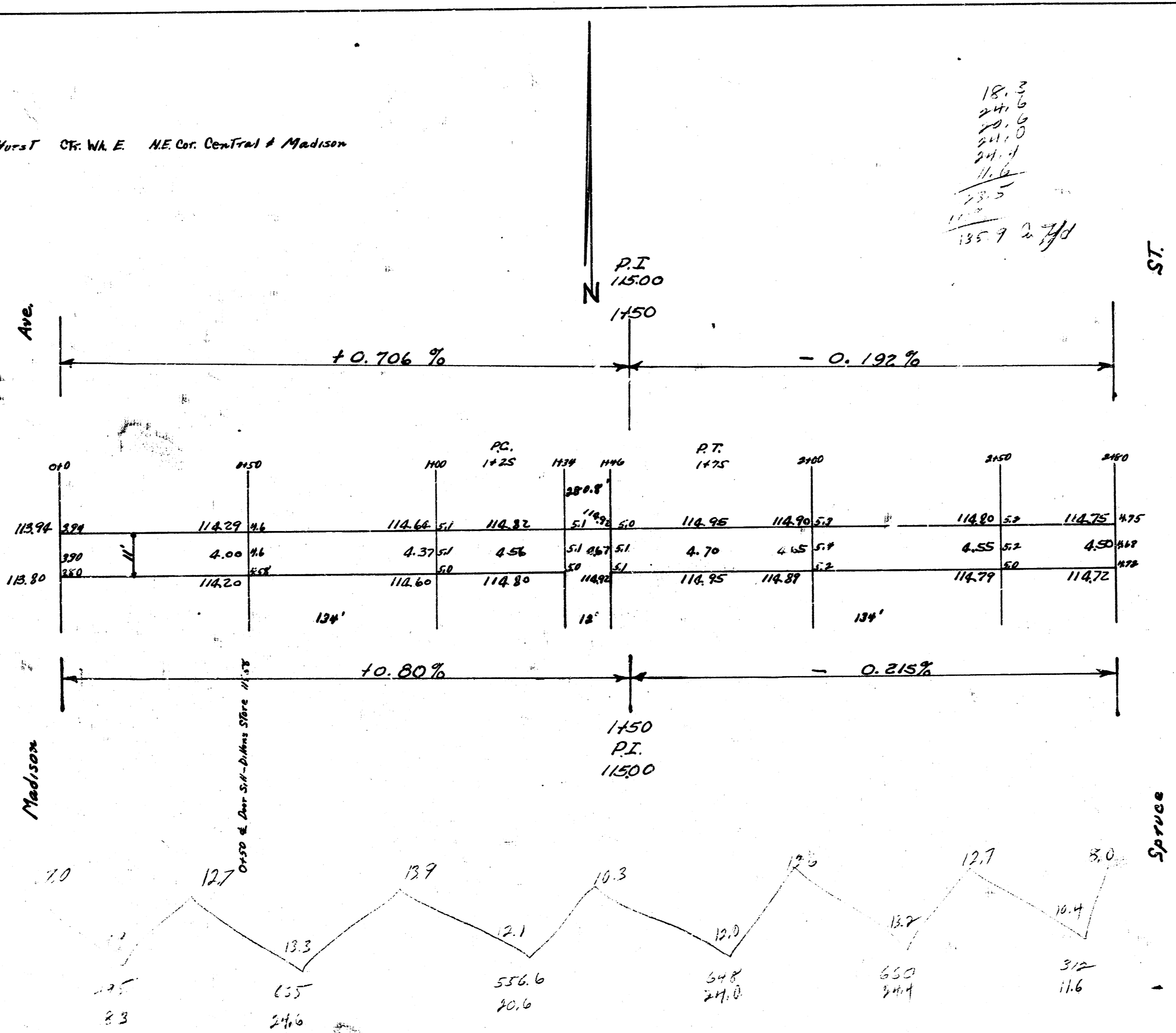


B.M. 11422 7' in Hops T Cr. WA E NE Cor. Central & Madison

18.3  
24.6  
21.0  
24.1  
16.6  
23.5  
11.7  
135.9 2 7/11



Remove & Replace Concrete Pavement necessary to provide drainage

Alley S. of Central  
 E.L. Madison — W.L. Spruce  
 11' Conc., 7"  
 City of Wichita, Kansas  
 L.H. White City Engineer  
 September 1948

4 14 11