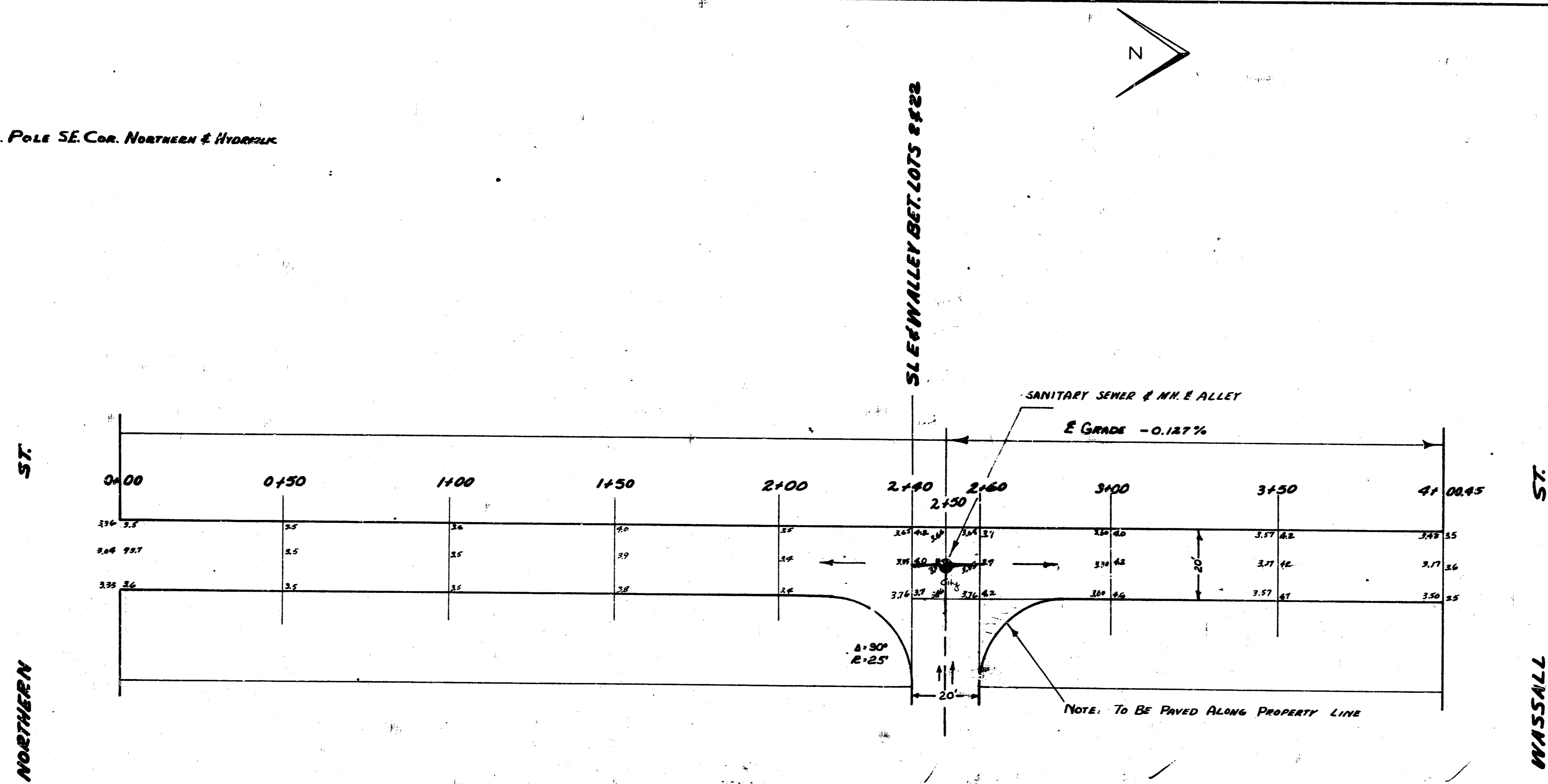


B.M. 95.93 60° SPIKE E.S. POLE SE COR. NORTHERN & HYDRAULIC



ALLEY E. HYDRAULIC
S.L. WASSALL TO S.L. OF E.W. ALLEY
BET LOTS 2 & 22 BLK. A INDUSTRIAL ADD.
7" CONC. 20'
CITY OF WICHITA KANSAS
L.K. WHITE CITY ENGINEER
APRIL 1952 PROJ. NO. C12-5

