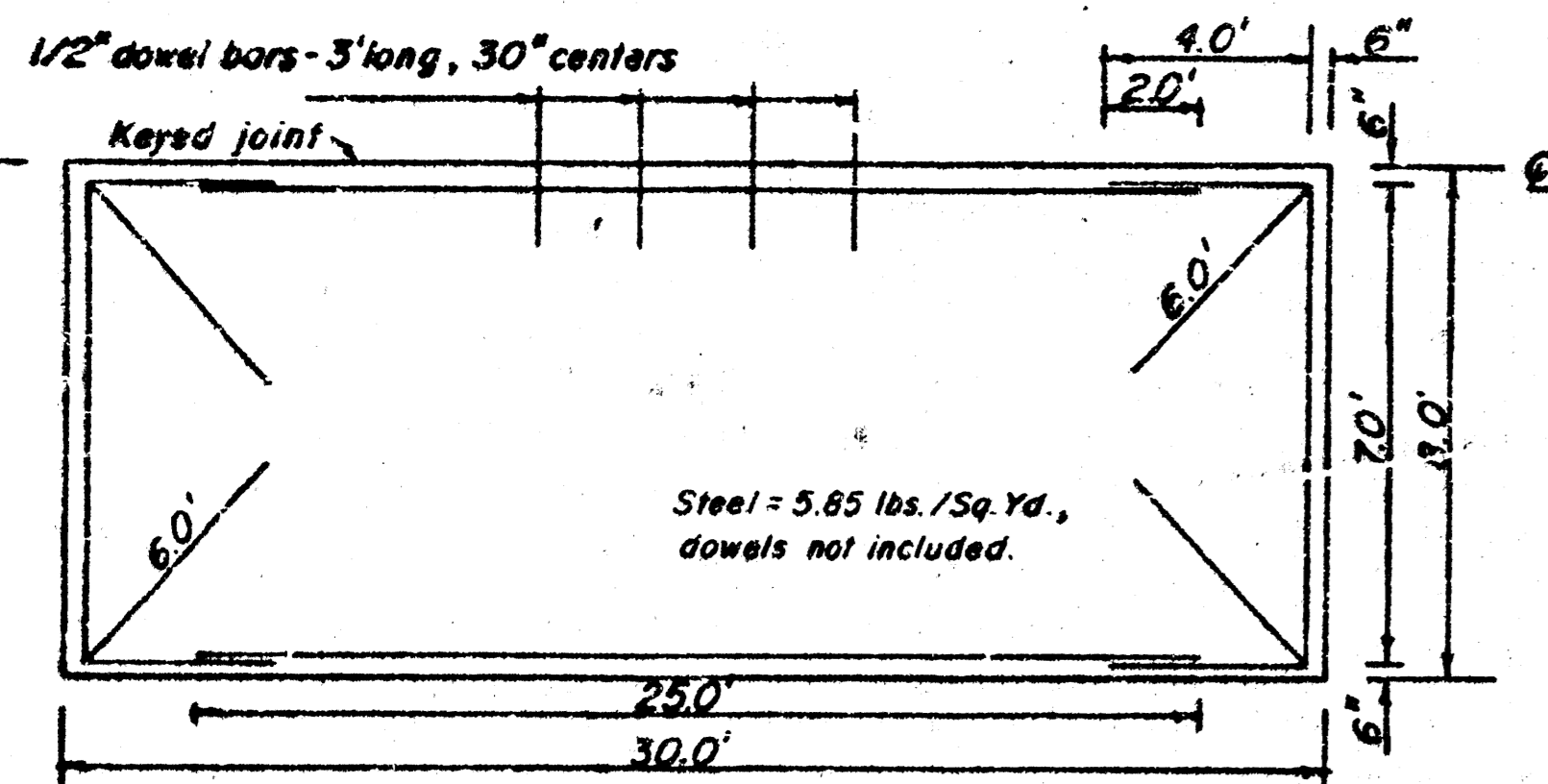
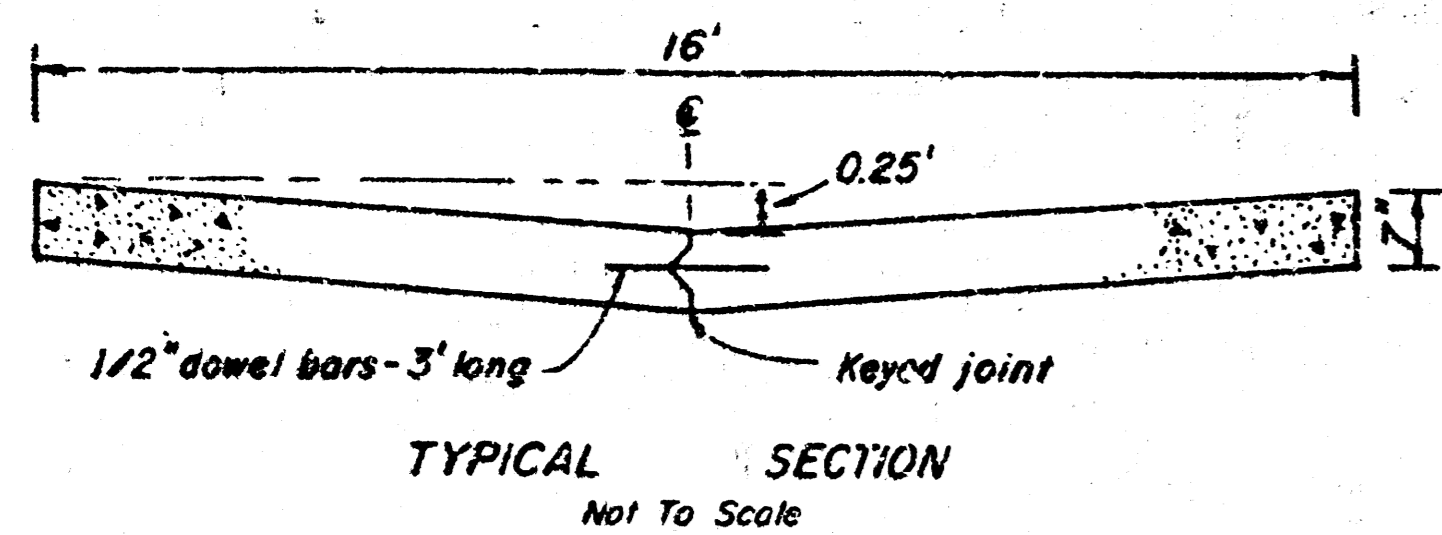
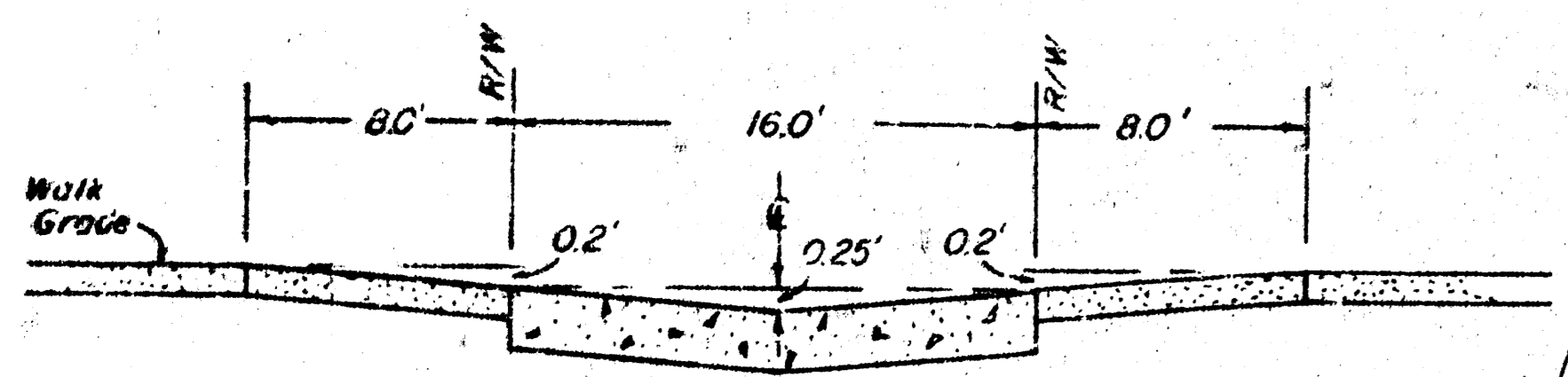


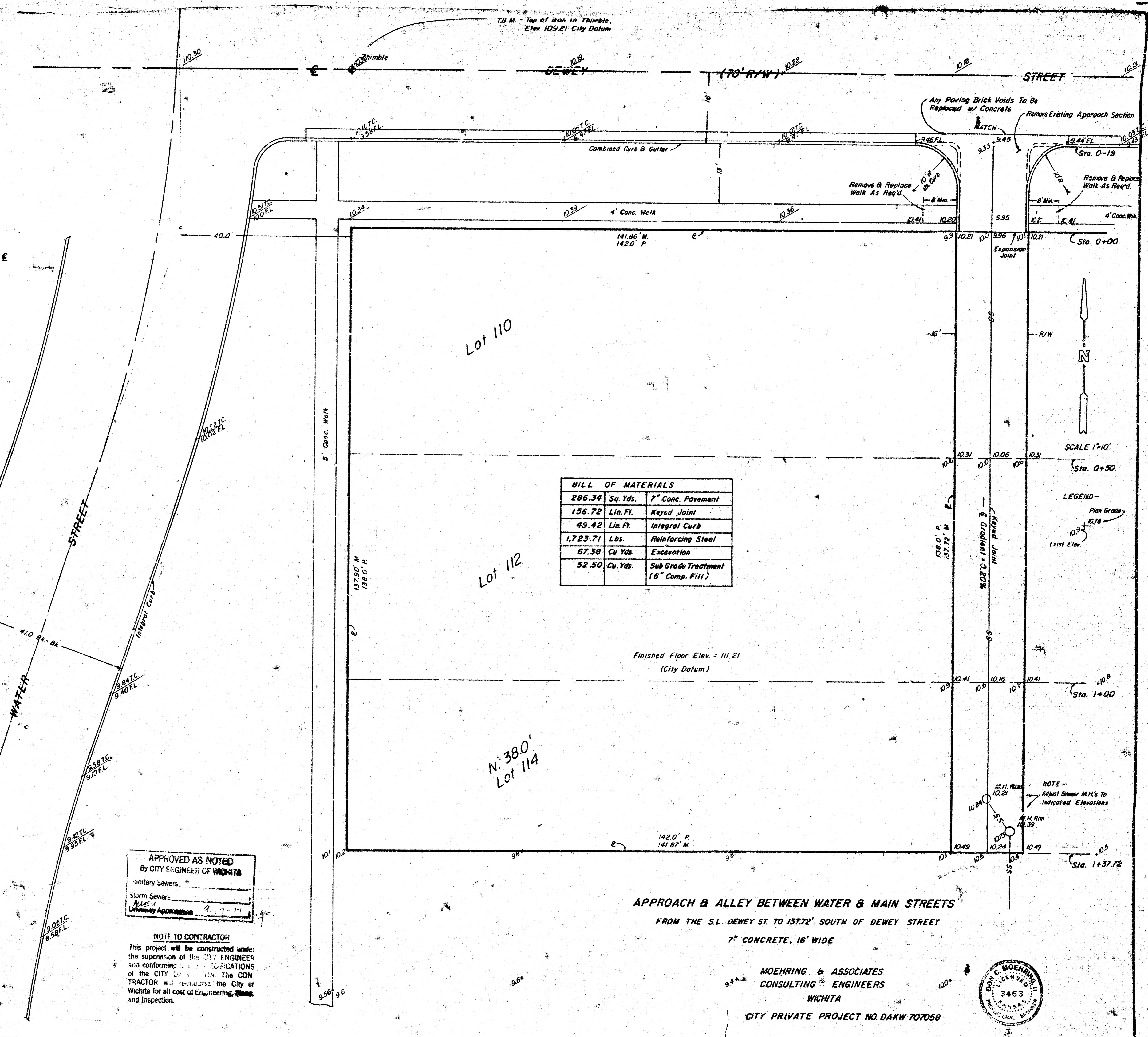
DETAIL



NOTE - All reinforcing steel to be #6 bars, except dowel bars.



T.B.M. - Top of iron in Thimble, Elev. 109.21 City Datum



BILL OF MATERIALS		
286.34	Sq. Yds.	7" Conc. Pavement
156.72	Lin. Ft.	Keyed Joint
49.42	Lin. Ft.	Integral Curb
1,723.71	Lbs.	Reinforcing Steel
67.38	Cu. Yds.	Excavation
52.50	Cu. Yds.	Sub Grade Treatment (6" Comp. Fill)

LEGEND -
Plan Grade
Exist. Elev.

APPROVED AS NOTED
By CITY ENGINEER OF WICHITA
Sanitary Sewers
Storm Sewers
ALLEY APPROACH
4.1.19

NOTE TO CONTRACTOR
This project will be constructed under the supervision of the CITY ENGINEER and conforming to the SPECIFICATIONS of the CITY OF WICHITA. The CONTRACTOR will reimburse the City of Wichita for all cost of Engineering, Plans, and Inspection.

APPROACH & ALLEY BETWEEN WATER & MAIN STREETS
FROM THE S.L. DEWEY ST. TO 137.72' SOUTH OF DEWEY STREET
7" CONCRETE, 16' WIDE

MOHRING & ASSOCIATES
CONSULTING ENGINEERS
WICHITA
CITY PRIVATE PROJECT NO. DAKW 707058



PRINTED FROM THE BEST