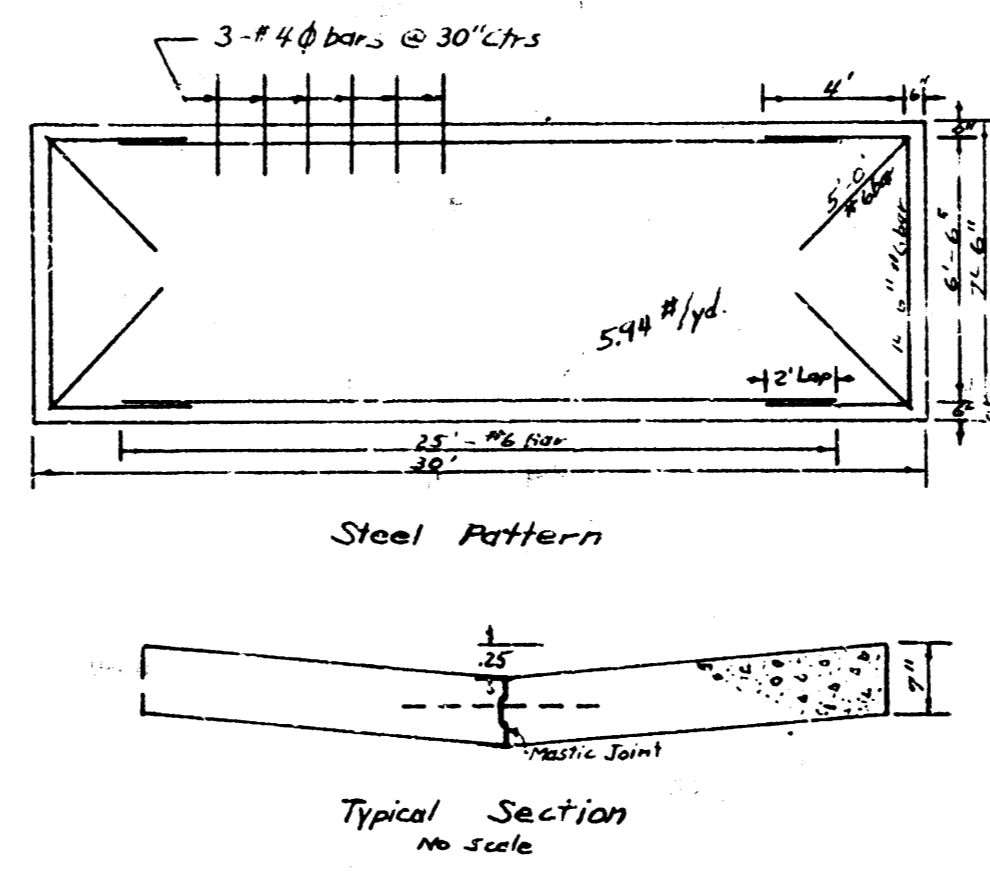
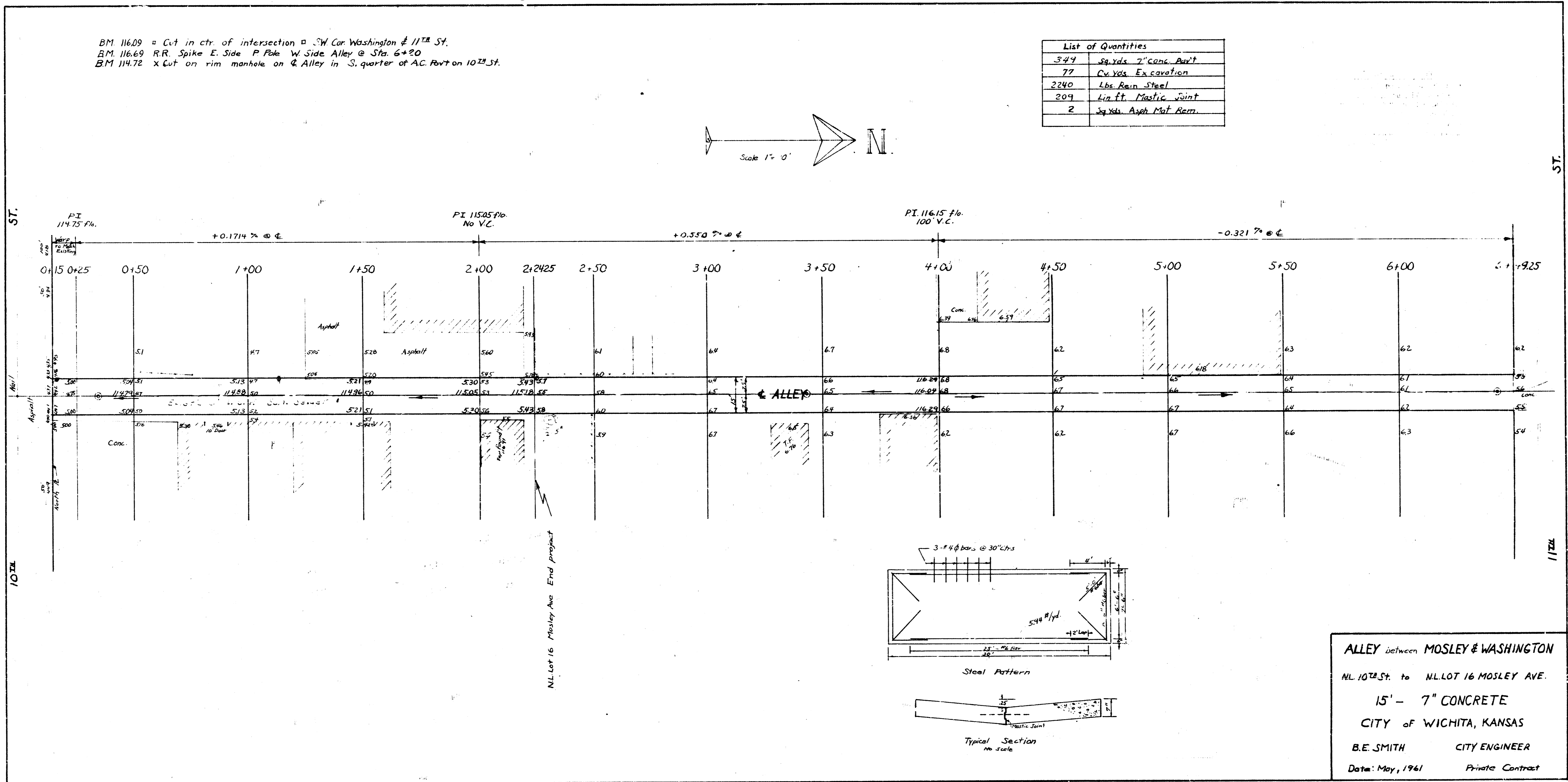
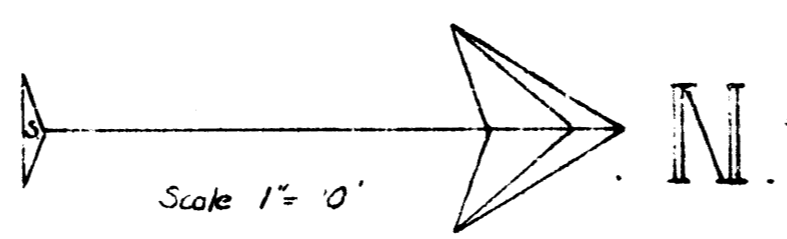


BM 11609 = Cut in ctr. of intersection of SW Cor Washington & 11th St.
 BM 11669 R.R. Spike E. Side P Pole W Side Alley @ Sta. 6+20
 BM 11472 X Cut on rim manhole on Alley in S. quarter of AC. Pbt on 10th St.

List of Quantities	
347	Sq. Yds. 7" Conc. Pav't
77	Cu. Yds. Excavation
2240	Lbs. Rein. Steel
209	Lin. Ft. Mastic Joint
2	Sq. Yds. Asph. Mat. Rem.



ALLEY between MOSLEY & WASHINGTON
 NL 10th St. to NL LOT 16 MOSLEY AVE.
 15' - 7" CONCRETE
 CITY OF WICHITA, KANSAS
 B.E. SMITH CITY ENGINEER
 Date: May, 1961 Private Contract