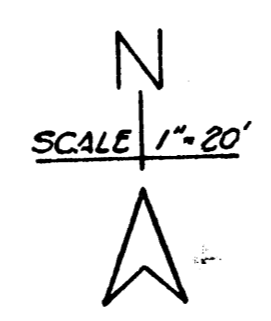
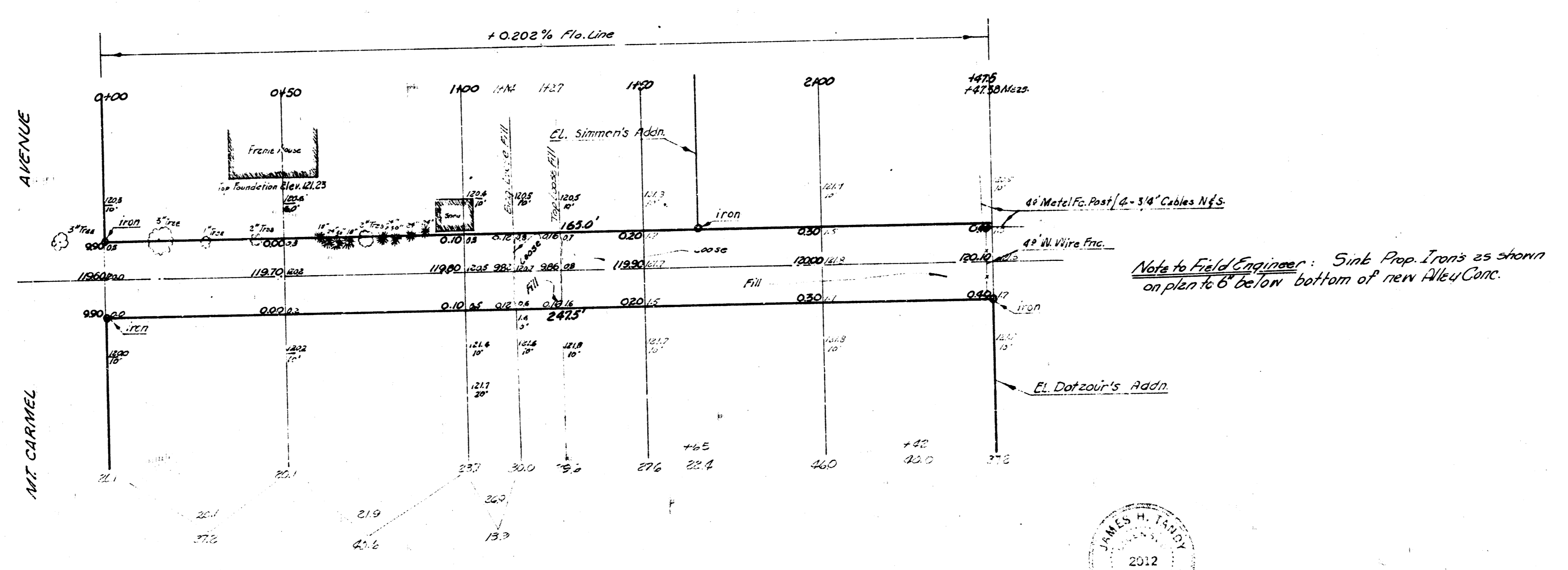


BM - Elev 121.60 City Standard, 1071 N. & 2 1/2 E. of SE. Cor. SHREEDAN & CENTRAL
 BM - Elev 121.09 20 Spike E. Side F.P. on E. Side Mt. Carmel approx 50' N. of Alley
 Base Line is On South Property Line of E. & W. Alley

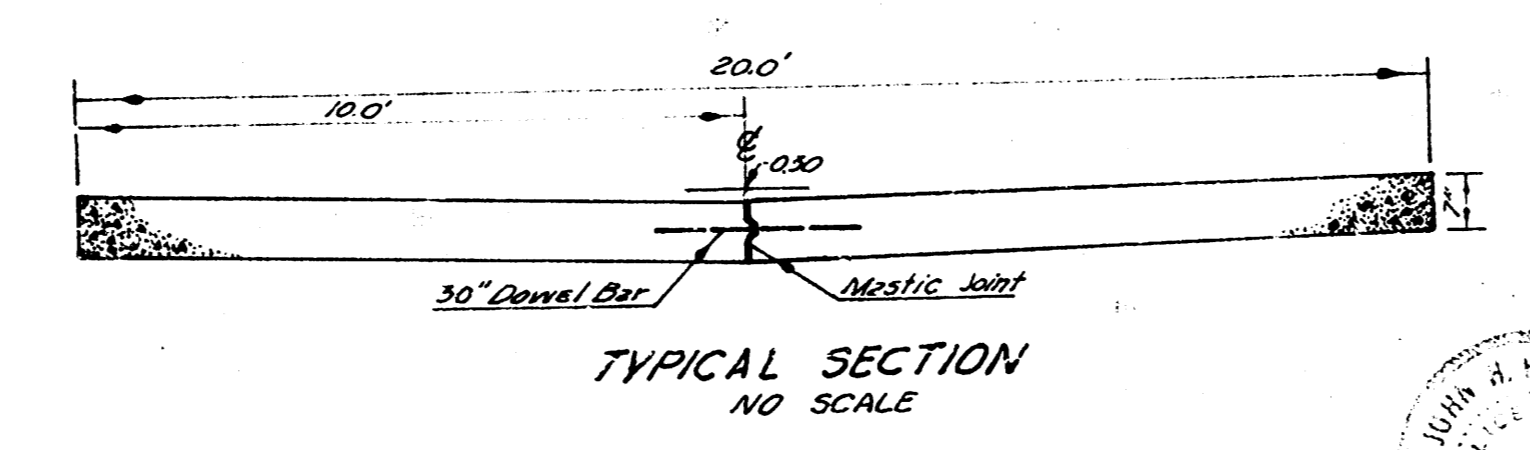
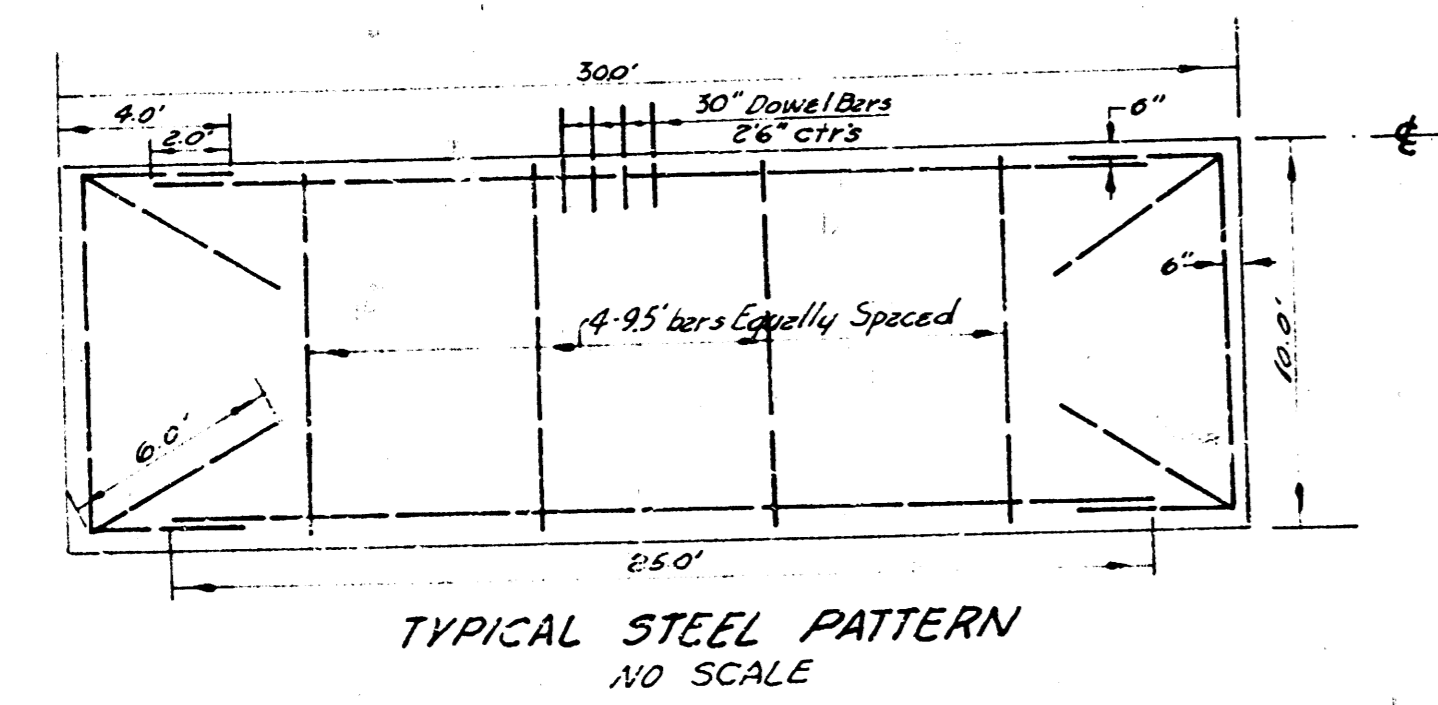


CONTRACT NO. 1117
 ALLEY NORTH CENTRAL AVE
 EL. MT. CARMEL
 CITY OF WICHITA, KANSAS
 DATE 12/21/58
 BY B.E. SMITH
 CHECKED BY J.H. LINDA



Note to Field Engineer: Sink Prop. Irons as shown on plan to 6' below bottom of new Alley Conc.

Survey J. Greig, R. W. 26
 E. & S. Steel
 City of Wichita



LIST OF QUANTITIES		
500.7	50' x 40' x 6"	7" Conc. Pavement
265.2	20' x 40' x 6"	Excavation
80.0	L.S.P.	Fence removal
7		Small Trees Rem.
200.0	L.S.P.	Tree Removal
200.0	L.S.P.	Welding Steel
200.0	L.S.P.	Metalic Joint

ALLEY NORTH CENTRAL AVE
 EL. MT. CARMEL EL. DOTZOUR Addn
 20' - 7" CONC
 CITY OF WICHITA, KANSAS
 B.E. SMITH City Engineer
 Date 12/21/58

Sheet 1 of 2

