

Scale: 1" = 20'

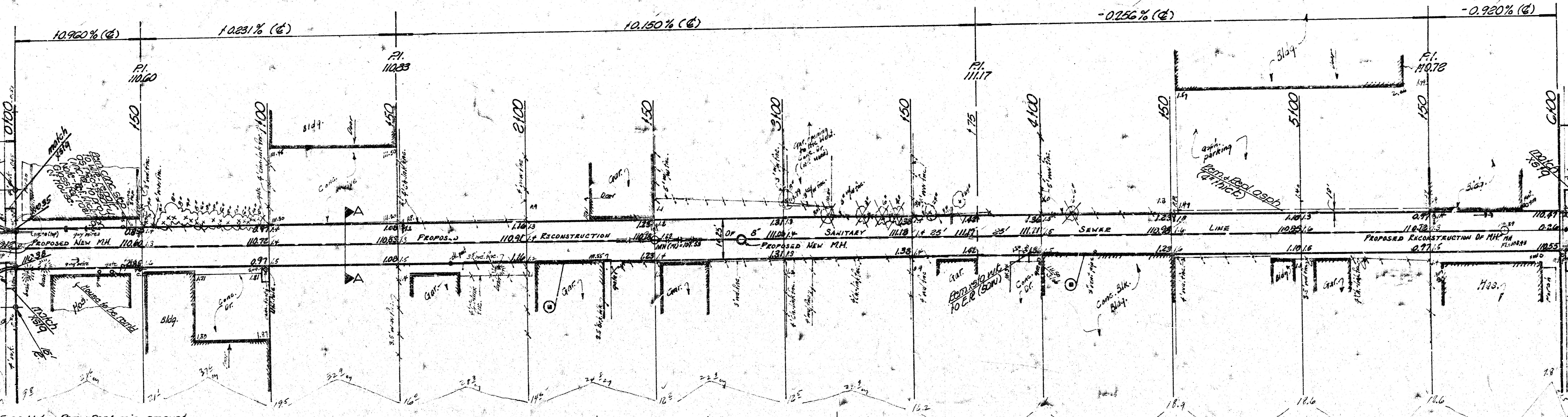
B.M. 110.80 4" cut bk. of wt. - 35' N. 154' E. of C. 272 + Indiana
 B = @ 01/164

STREET

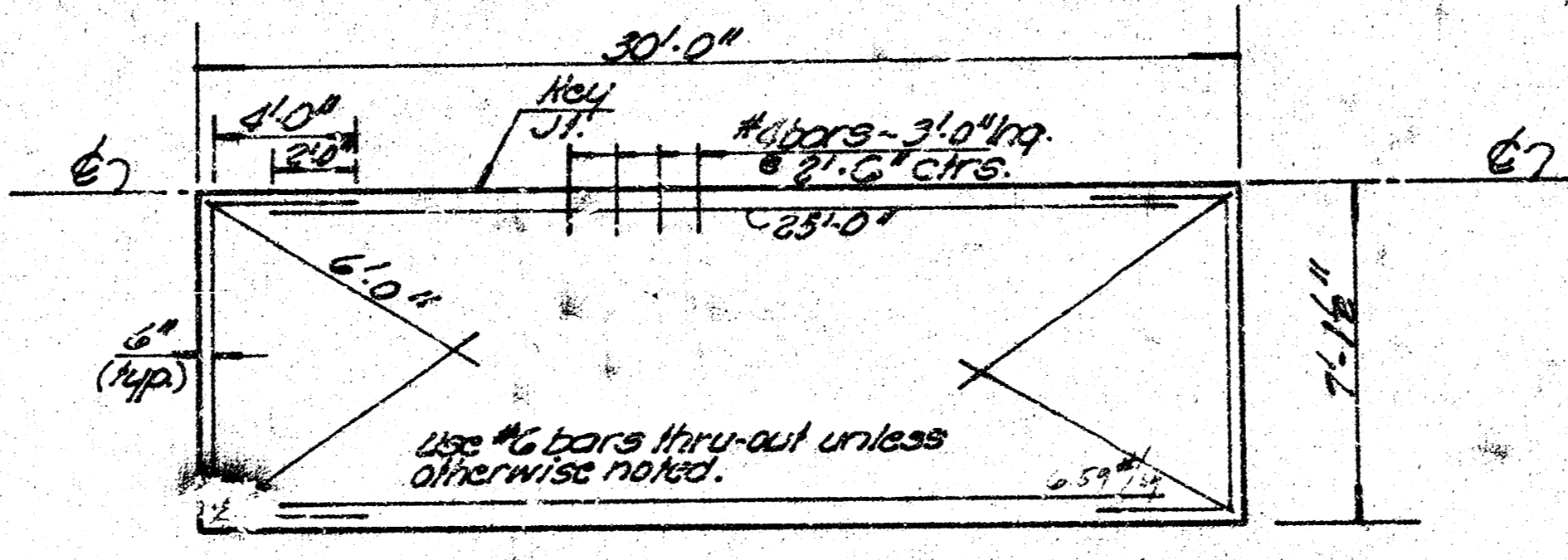
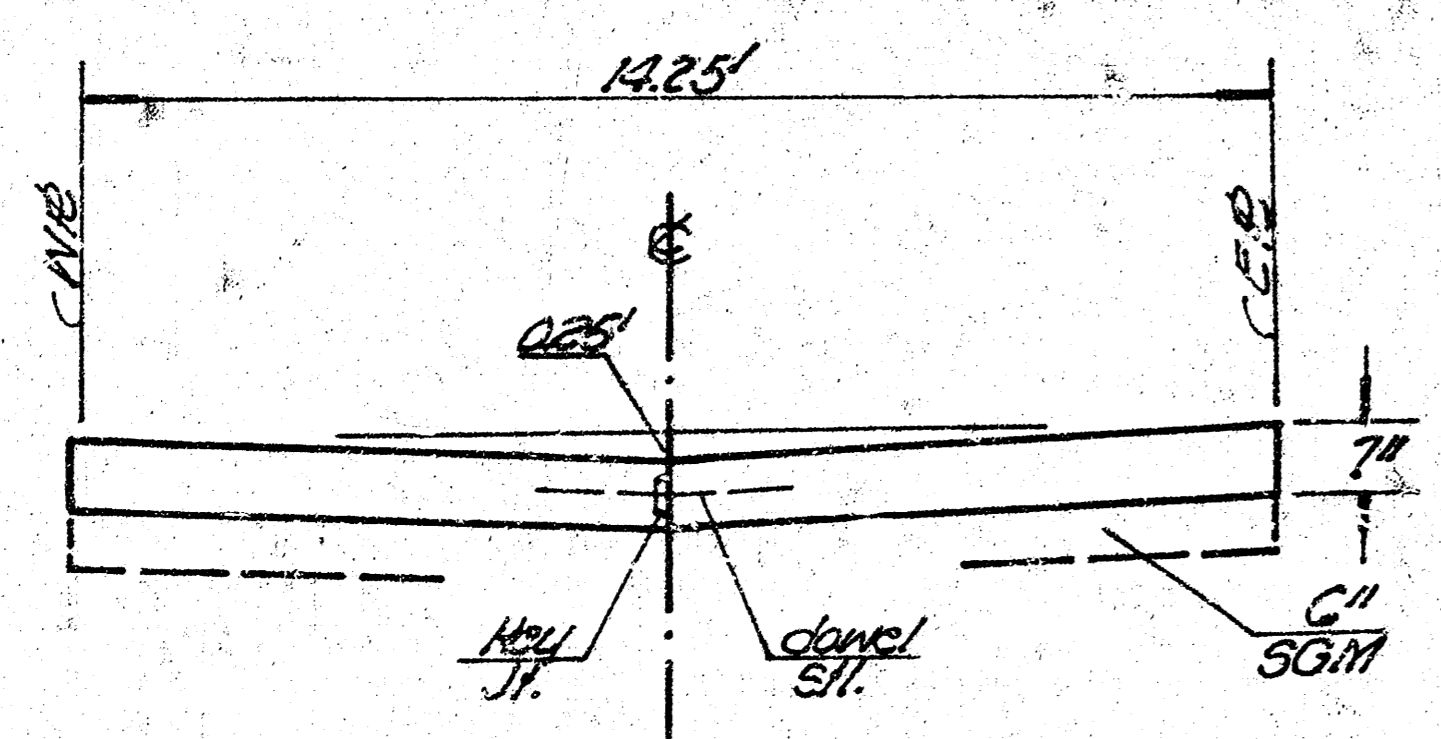
STREET

SECOND

THIRD



- NOTE:**
1. Rem. + Repl. all fnc's disturbed by const. (only when prop. owner requests)
 2. The repair of xstg (ITE's) to be incidental to proj.
 3. Xstg walks to be reml'd to nearest jt.
 4. Trees marked X are to be removed; Engr. to determine in field.
 5. (B) = Bldg. encroachment on alley R/W



"EARTHWORK QUANTITIES"

PROP.	X-CAV.	CITY
548.5		5.8
34.9 (10%)		0.6 (10%)
383.4 CY.		6.4 CY.
Manipulation =	PROP. 983.3 SY.	CITY 106.5 SY.

NOTE: USE EXTREME CAUTION WHEN WORKING OVER EXISTING SANITARY SEWER LINE

ALLEY - Betwn Cleveland + Indiana
 N.L. Second Street to St. Third Street

14.25' - 7" Concrete Pavement
 City of Wichita, Kansas
 R. W. Linn City Engineer
 Date -
 Proj. No. - DAKA 57707G
 472-76-245-80563-000-000-001

CAUTION
 UNDERGROUND
 UTILITIES

