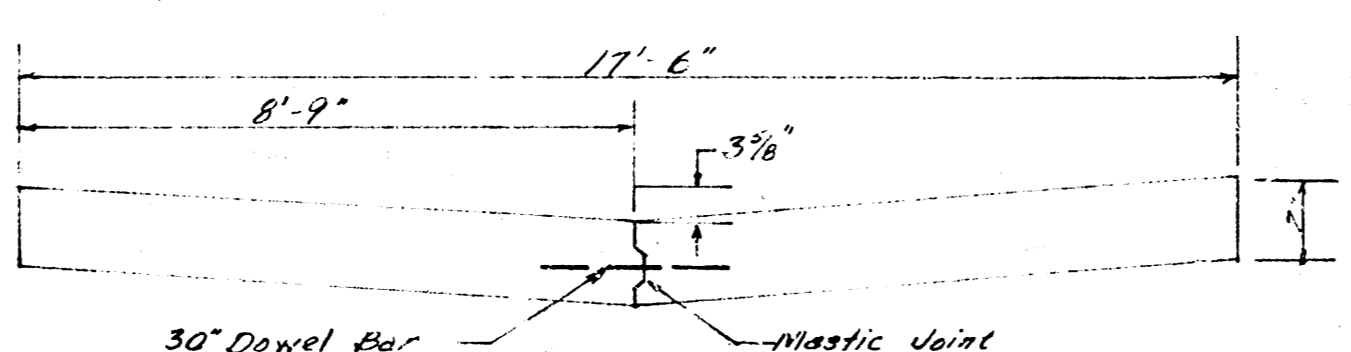
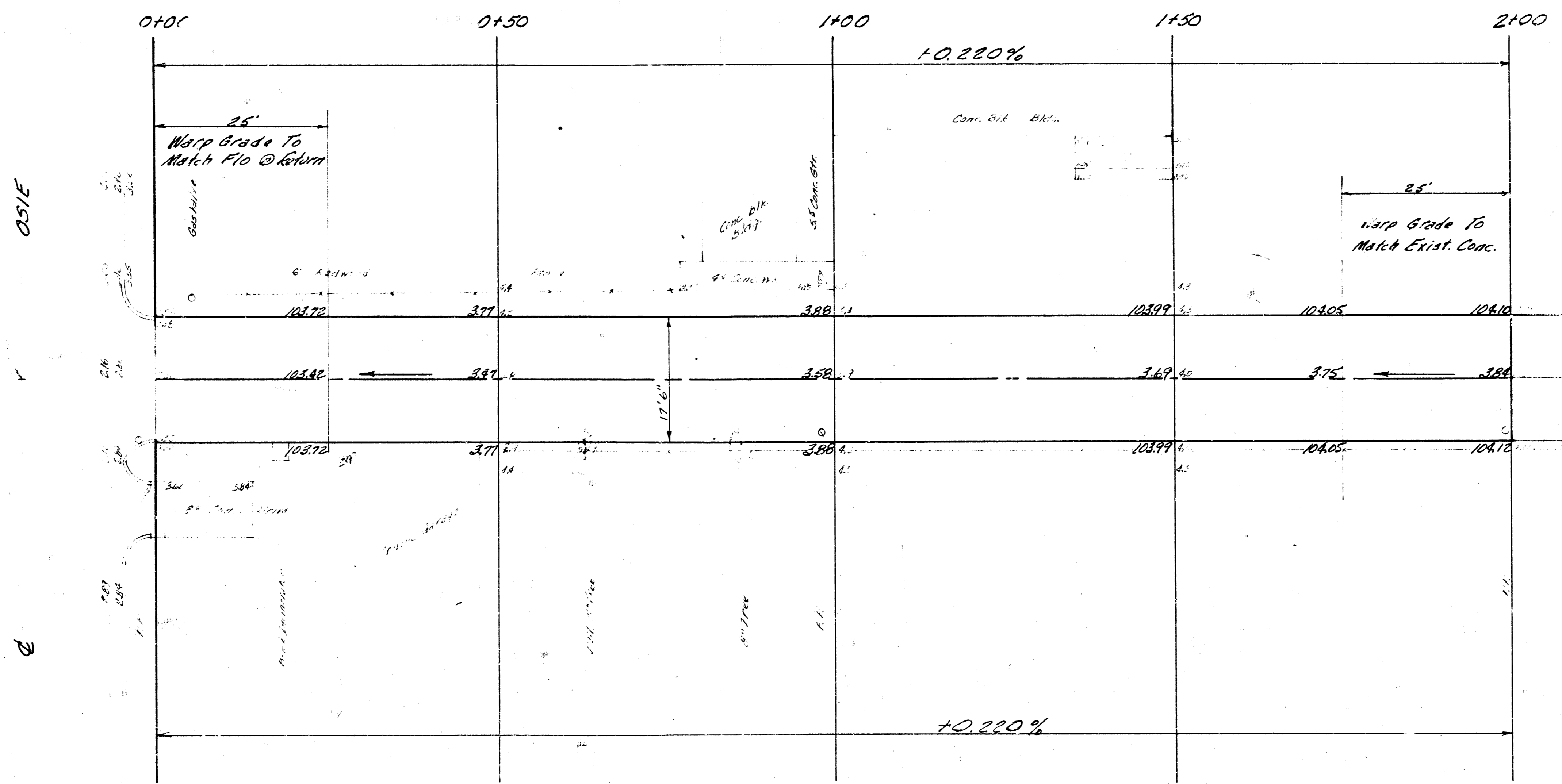
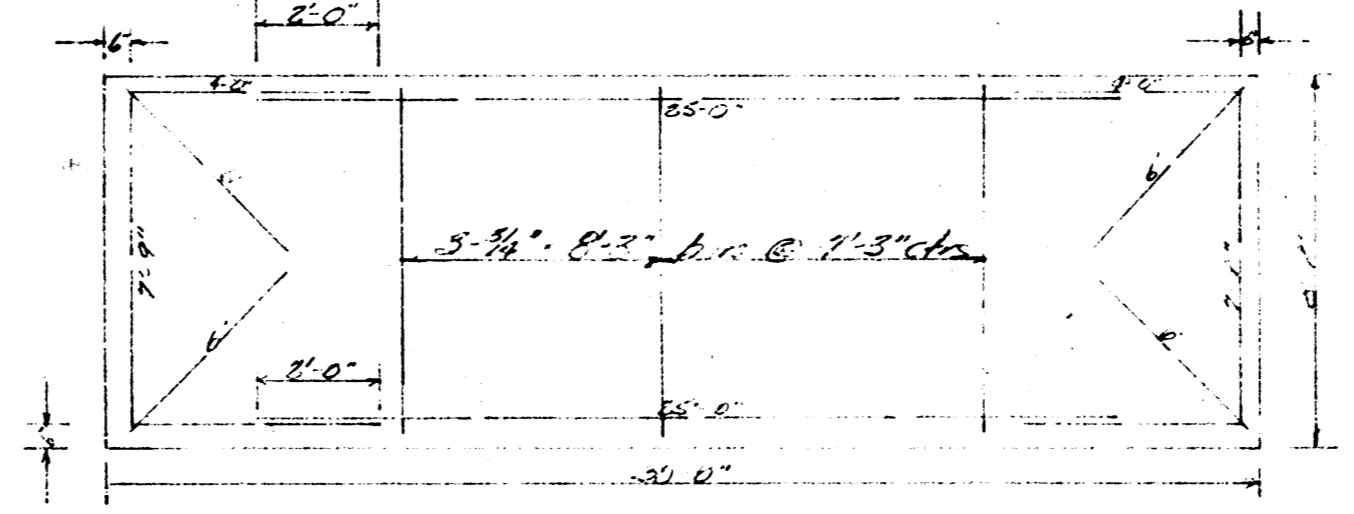


BM 10280 Iron in Thiabie  
& Topeka & Osie



TYPICAL SECTION  
No Scale



TYPICAL STEEL PATTERN  
No Scale



ALLEY BETWEEN BROADWAY  
AND TOPEKA  
W. LOSIE TO 200' NORTH  
17.5' - 7" CONC.  
CITY OF WICHITA, KANSAS  
B.E. SMITH, CITY ENGINEER  
DATE: MARCH 1965, PROJ. NO. CM-62