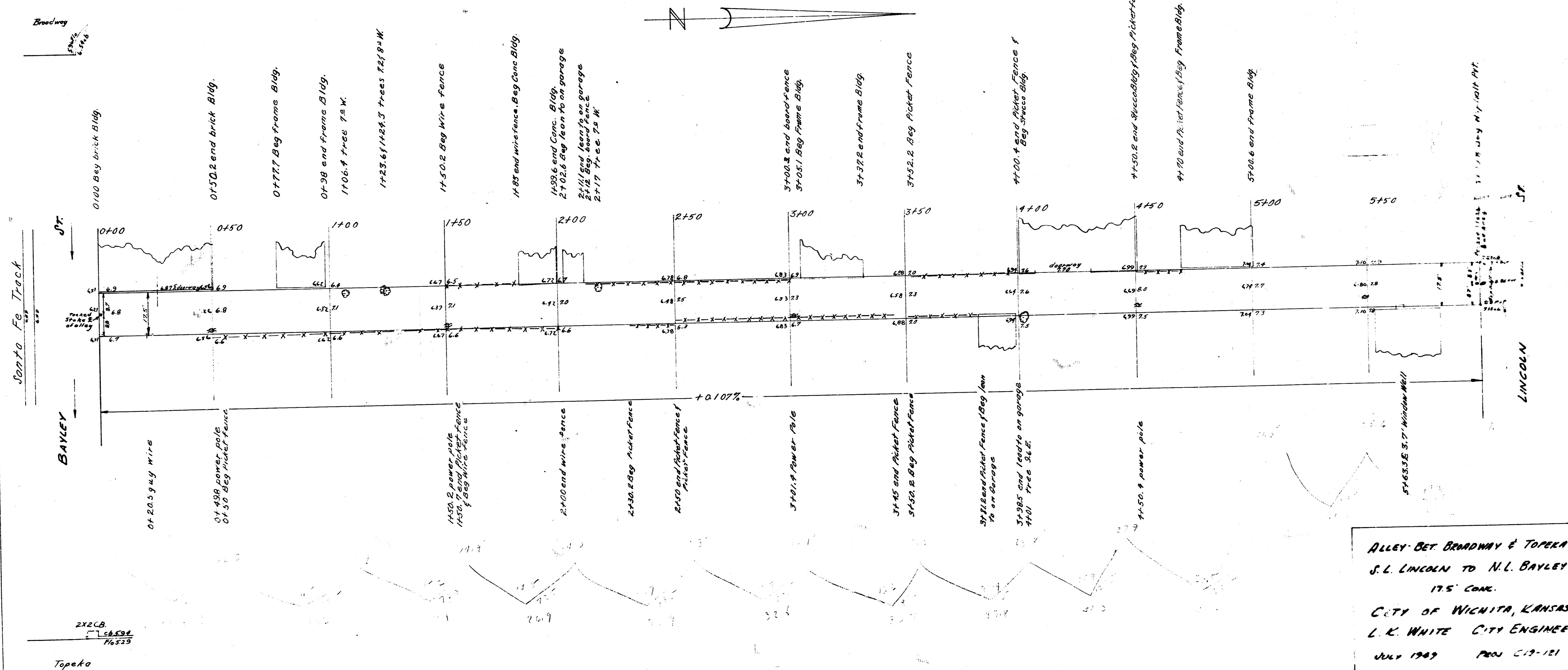


B.M. 106.96 Bk. Wk. N.W. Cor. Fire Sta. & E. Cor. Broadway f Bagley

B.M. 107.13 "B" in Burton str. Wk. W. W.S. Alley f S.S. Lincoln
B.M. 107.07 Iron in Thim & Topeka f S.S. Lincoln



Streetcar Track

BAYLEY

LINCOLN

ALLEY BET BROADWAY & TOPEKA
S. L. LINCOLN TO N. L. BAYLEY
175' CONC.
CITY OF WICHITA, KANSAS
L. K. WHITE CITY ENGINEER
JULY 1909 PROJ. C-19-121

2x2 CB
10-23-09
76323
Topeka