

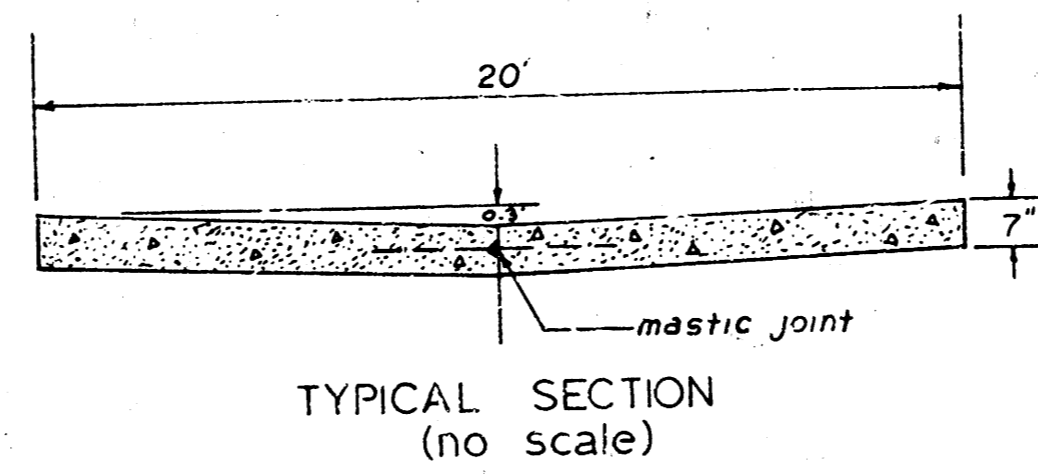
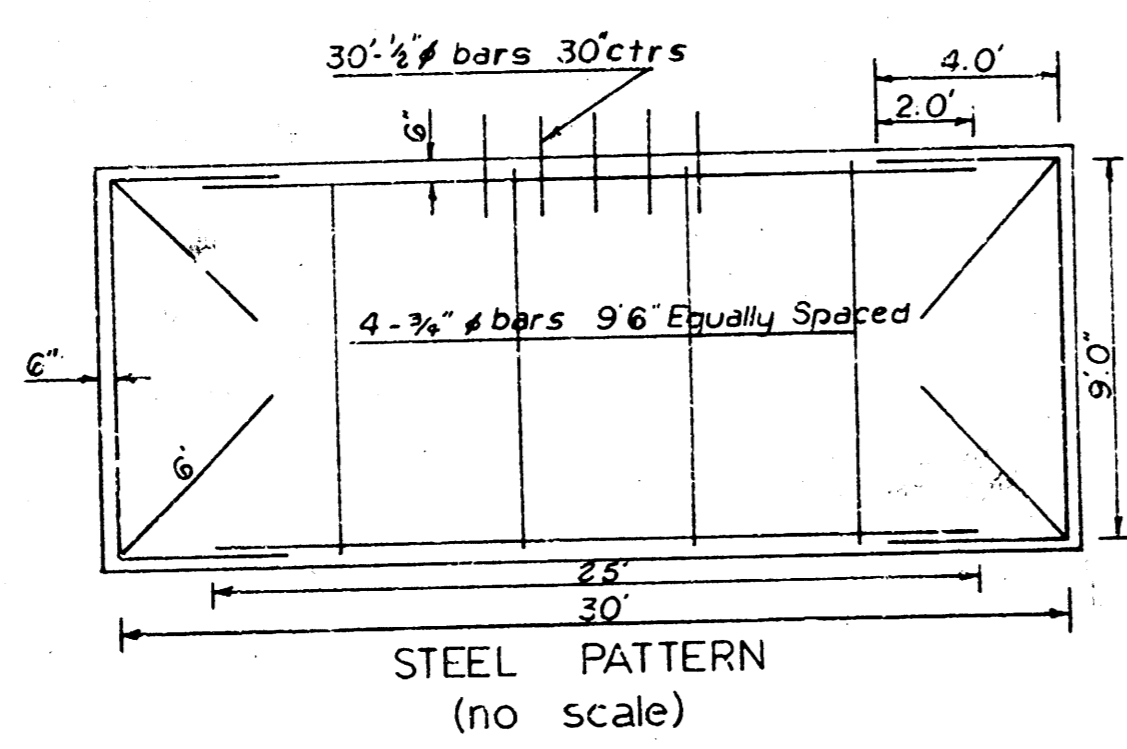
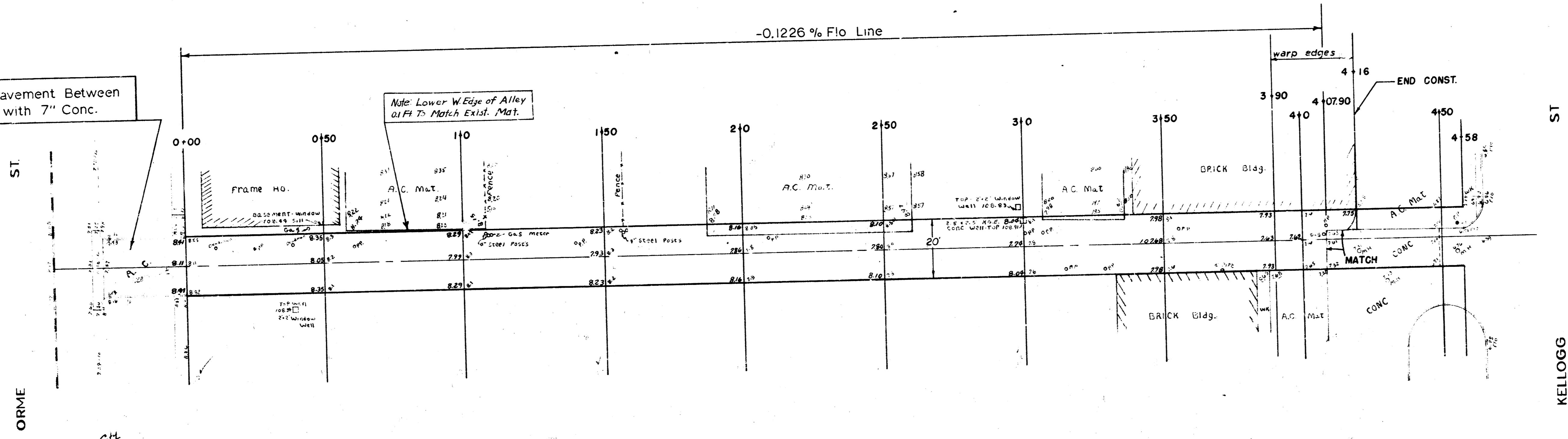
NOTE: 3/4" iron at back N. Curb. S. Lane Kellogg.
iron is ϵ Alley South.

N
Scale: 1" = 20'

B.M.=108.35. Iron in Thimble ϵ Topeka & Orme.
" =107.095 N.E. Cor 1st step. TOWN HOUSE MOTEL BLDG. S.S. Kellogg - W.S. Topeka.

NOTE: Remove Pavement Between
Curbs & Replace with 7" Conc.

Note: Lower W. Edge of Alley
at Ft 7' Match Exist. Mat.



EXCAVATION City
Prop 1909
19.1%
210.0 cu yds

ALLEY BETWEEN BROADWAY & TOPEKA	
N.L. ORME to S.L. KELLOGG	
20'-7" Conc	
CITY OF WICHITA, KANSAS	
B.E. SMITH	City Engineer
Date: 3.5.11.2012	Proj No. C12-56