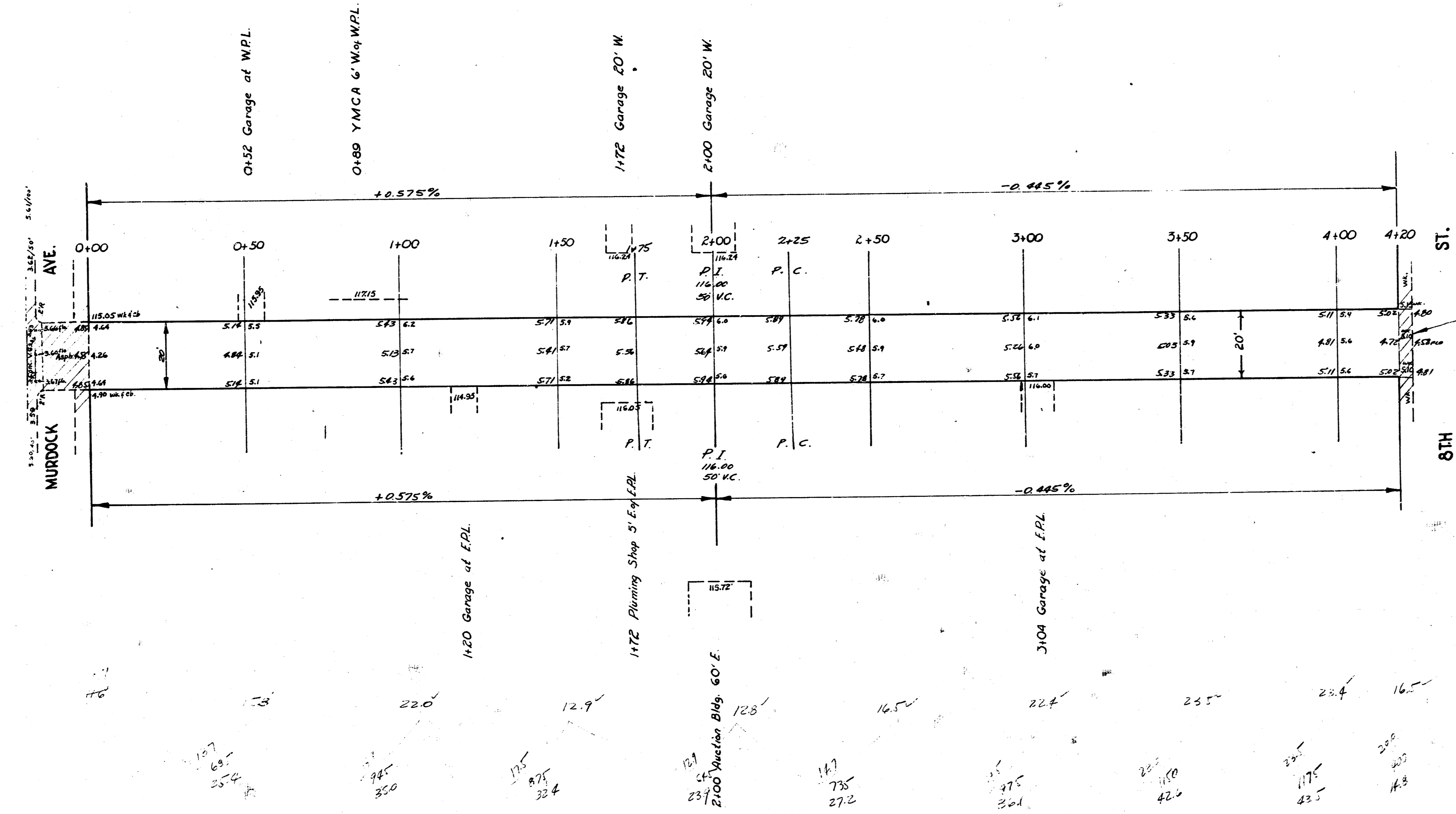
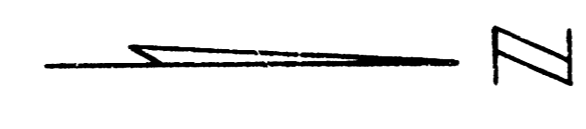


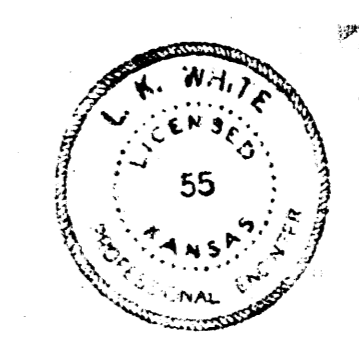
B.M. 114.98 "B" in Ball, c.w.k.s. s.e. Murdock f Water
 B.M. 115.28 "C" in Garden, c.w.k.s. s.w. Water f 8th
 B.M. 114.86 "H" in Harrison c.w.k.a. e. side Alley, s. side Murdock
 B.M. 115.08 "C" in Carter c.w.k.w. w. side Alley, N. side 8th



NOTE: Alley Approach f V.G. to be removed

NOTE: REMOVE WALK AND EXTEND ALLEY TO FRONT OF WALK.

SECTION AT 4+20



ALLEY
 East of Water
 N.L. Murdock to S.L. Eighth
 7' Conc. 20'
 CITY OF WICHITA, KANSAS
 L.K. WHITE CITY ENGINEER
 DEC. 1950, PROJ. NO. C10-167

Handwritten notes and dimensions below the main plan view:
 22.0', 12.9', 16.5', 22.4', 25.5', 23.4', 16.5', 22.0', 27.2', 30.1', 42.2', 43.5', 4.3'