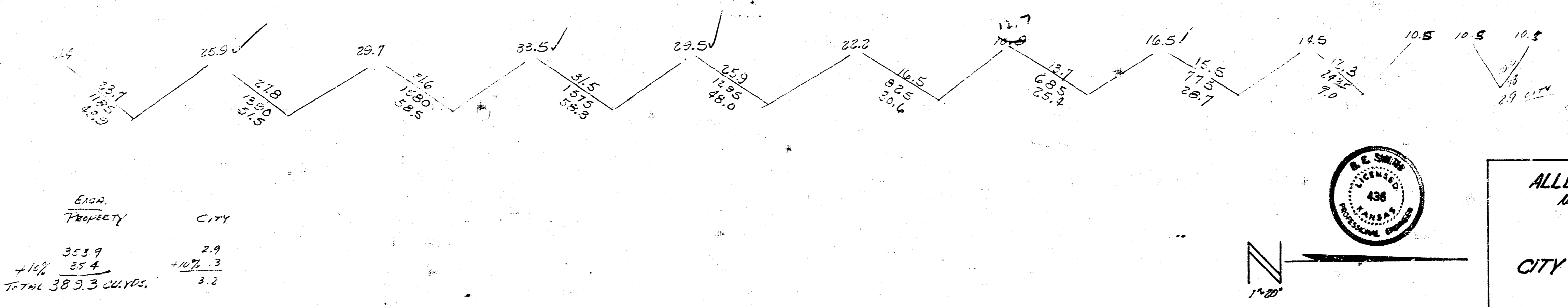
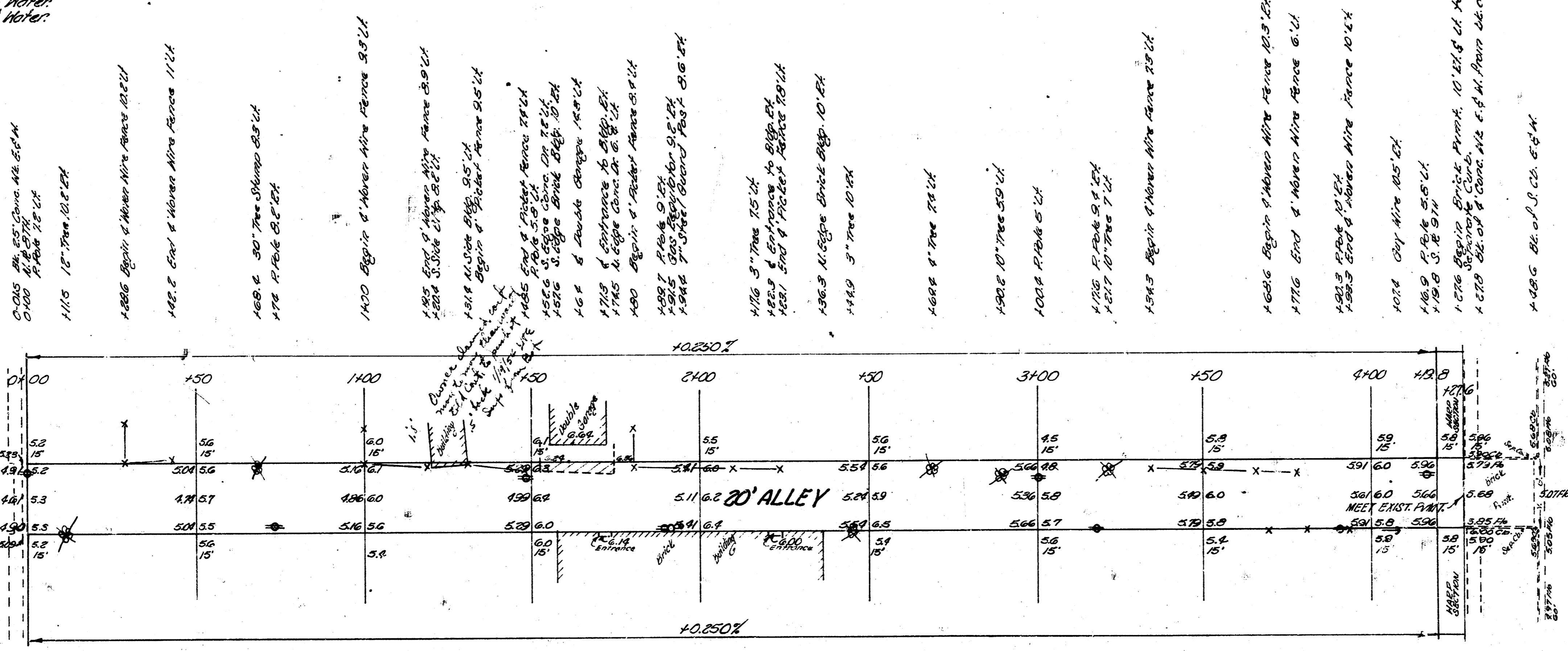
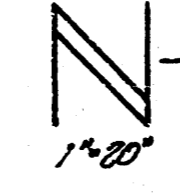


B.M. 115.28 C in CAPTEL at N.W. cor. S.W. cor. 8TH & Main  
 B.M. 116.71 C in CAPTEL at N.E. cor. 9TH & Main  
 Stationing on E



End of Property	City
353.9	2.9
+1% 35.4	+10% 3.3
Total 389.3 curves	3.2



**ALLEY WEST OF MAIN**  
 N.W. 8TH ST. TO S.W. 9TH ST.  
 20' Wide 6"

**CITY OF WICHITA, KANSAS**

B.E. SMITH  
 JUN 1953

CITY ENGINEER  
 Form No. C13-4

Surveyed by B.E. Smith  
 Plotted by B.E. Smith  
 Checked by J.H. [Signature]