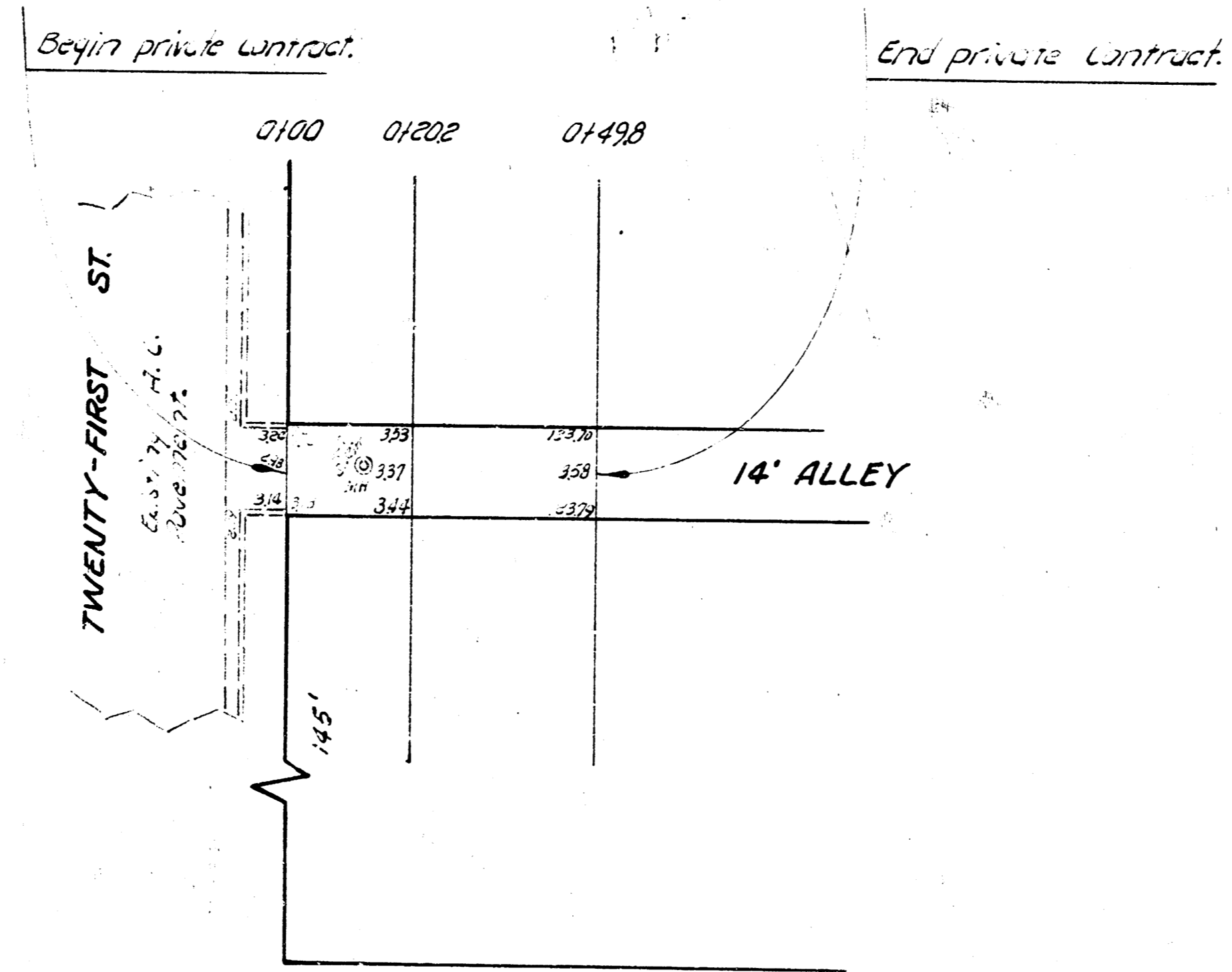
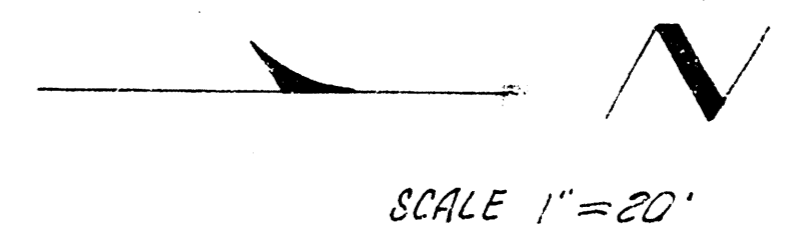


B.M. 124.23 "H" in Hurst Ctr of Wk. West SW cor. Park Place & 21st.



PARK PLACE

ALLEY
BETW. WELLINGTON PL & PARK PL.
N. 21ST. ST. TO 49.8' N. OF N. 21ST. ST.
14' CONC-6"
CITY OF WICHITA, KANSAS
B. E. SMITH CITY ENGINEER
OCT. 1937, PRIVATE CONTRACT

124.23 "H"
B.M.