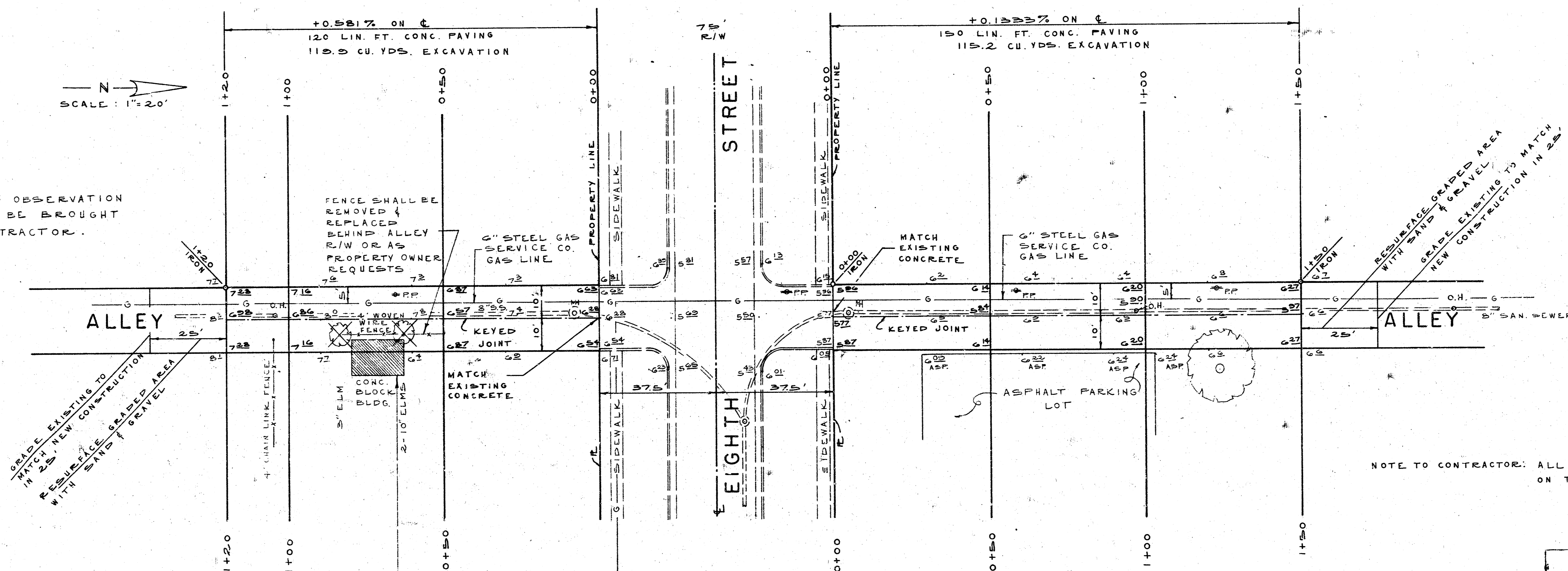


B.M. - ELEV. 117.53 : "R" IN RITCHIE CTR CONCRETE WALK APPROX. 12' NORTH BACK OF CURB @ THE N.E. COR. WACO & 8 TH ST. NORTH.

SCALE: 1"=20'

MANHOLE TOPS AND OBSERVATION HOLE TOPS SHALL BE BROUGHT TO GRADE BY CONTRACTOR.



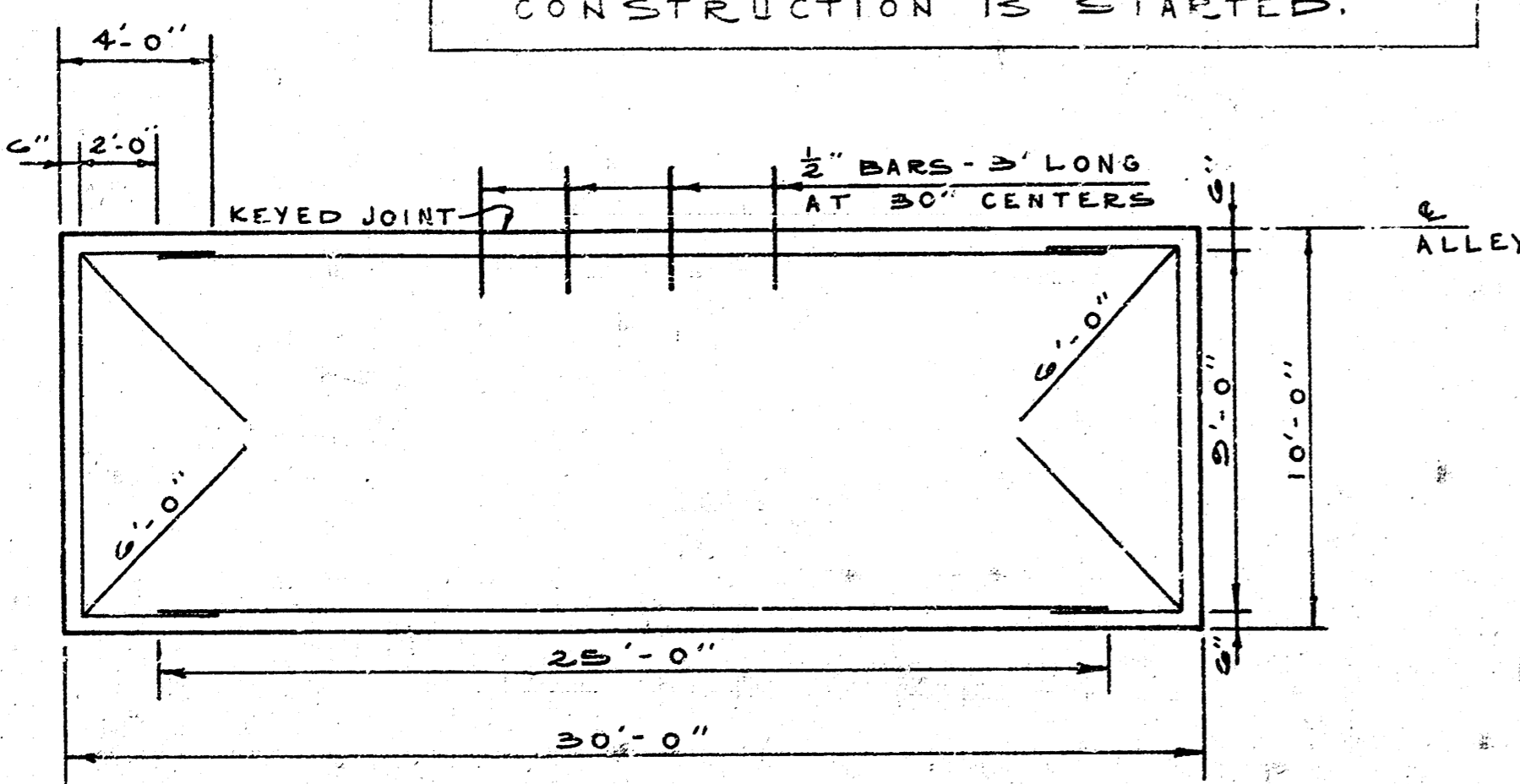
NOTE TO CONTRACTOR
 This project will be constructed under the supervision of the CITY ENGINEER and conform to the ORDINANCES of the CITY OF WICHITA. THE CONTRACTOR SHALL BE RESPONSIBLE TO THE CITY OF WICHITA for all work of Engineering, Plans, and Inspection.

CITY OF WICHITA
 APPROVED: _____
 DATE: 12-4-75
feet

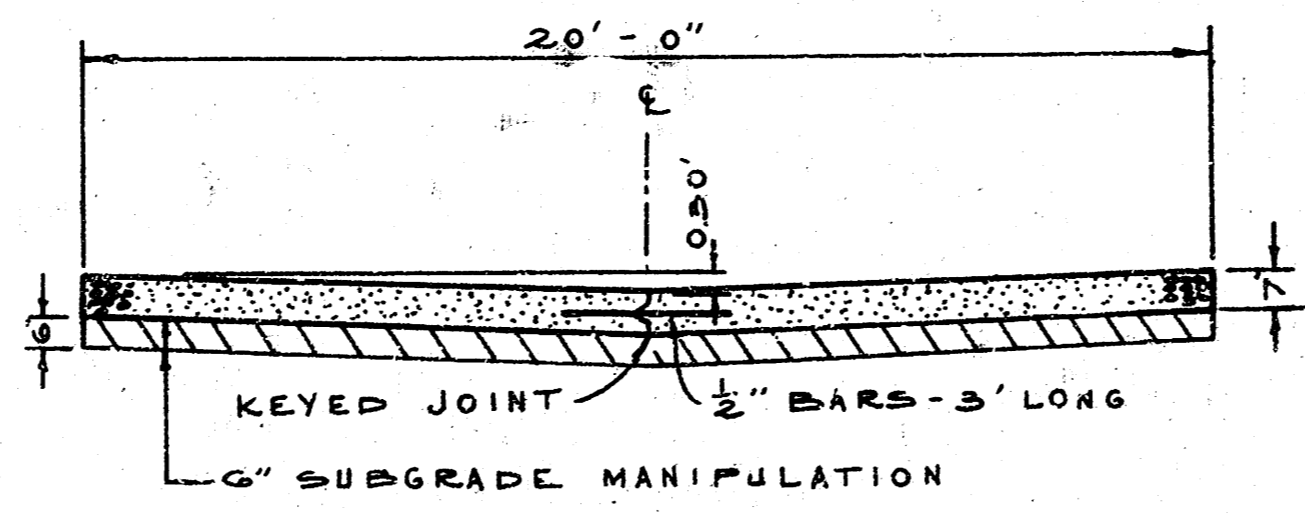
OWNER OF CONCRETE BLOCK BUILDING TO BE CONTACTED ABOUT REMOVAL OF THE BUILDING AND A LETTER SUBMITTED TO THE CITY ENGINEER'S OFFICE AS TO THE AGREEMENT BETWEEN THE 2 INTERESTED PARTIES. THIS SITUATION MUST BE RESOLVED BEFORE ANY CONSTRUCTION IS STARTED.

NOTE TO CONTRACTOR: ALL "IRONS" SHALL BE PROTECTED ON THIS PROJECT.

CAUTION
 UNDERGROUND UTILITIES



STEEL PATTERN
 ALL REINFORCING STEEL TO BE #6 BARS EXCEPT DOWEL BARS.



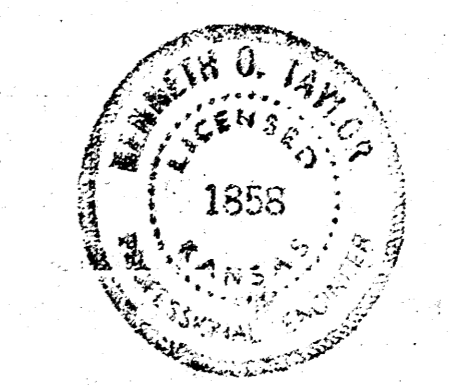
TYPICAL SECTION

EARTHWORK QUANTITIES

EXCAVATION = 215.7 CU. YDS.
 10% = 21.4 CU. YDS.
TOTAL = 235.1 CU. YDS.
 CALCULATED MANIPULATION = 600 SQ. YDS.

⊗ = TREE REMOVAL
 ⊠ = REMOVAL

"ALLEY" - BETWEEN WACO AVE. AND WICHITA ST., S.L. EIGHTH ST. 120' SOUTH AND N.L. EIGHTH ST. 150' NORTH. 20' - 7" CONCRETE



K. O. TAYLOR, P.E.
 NOV. 20, 1975

PRIVATE PROJ. NO. DKW705052