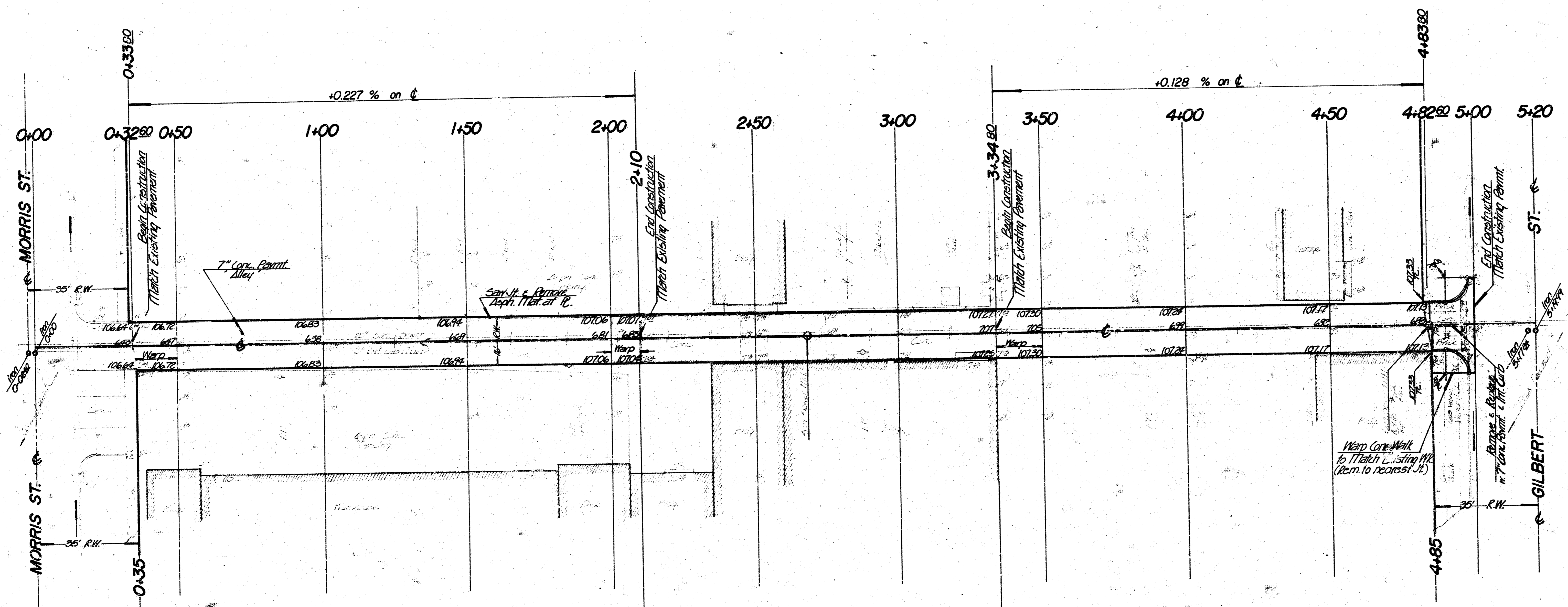


B.M. 106.83' 'P' in PKS N. end E. curb alley return between St. Francis & Santa Fe N. side Morris.  
 B.M. 105.88' 'T' on N. end radius W. curb alley between St. Francis & Santa Fe.

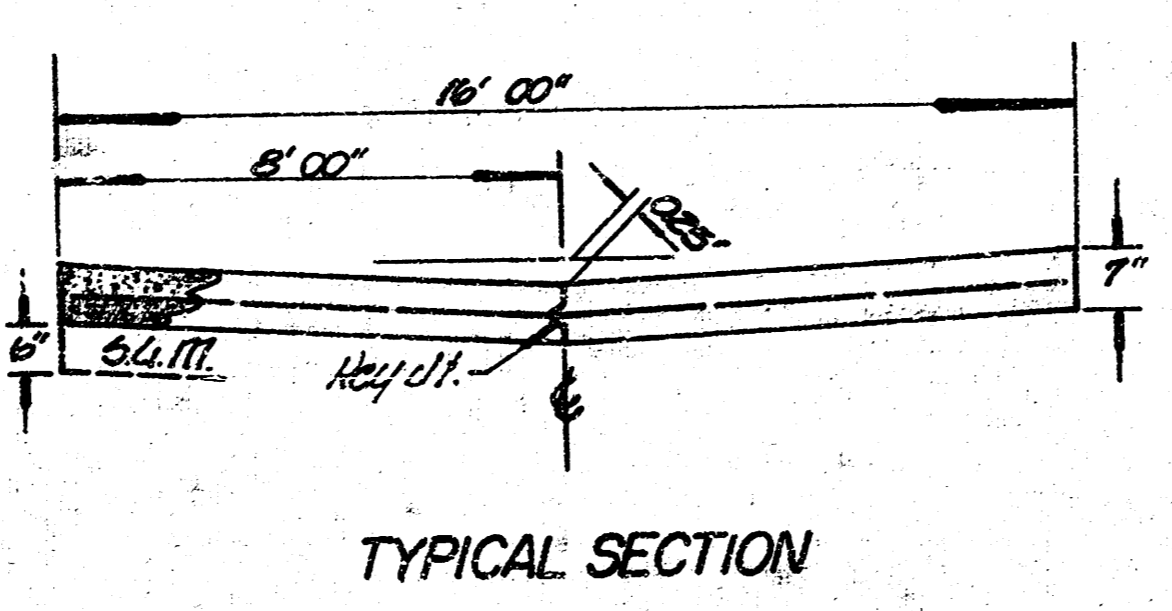
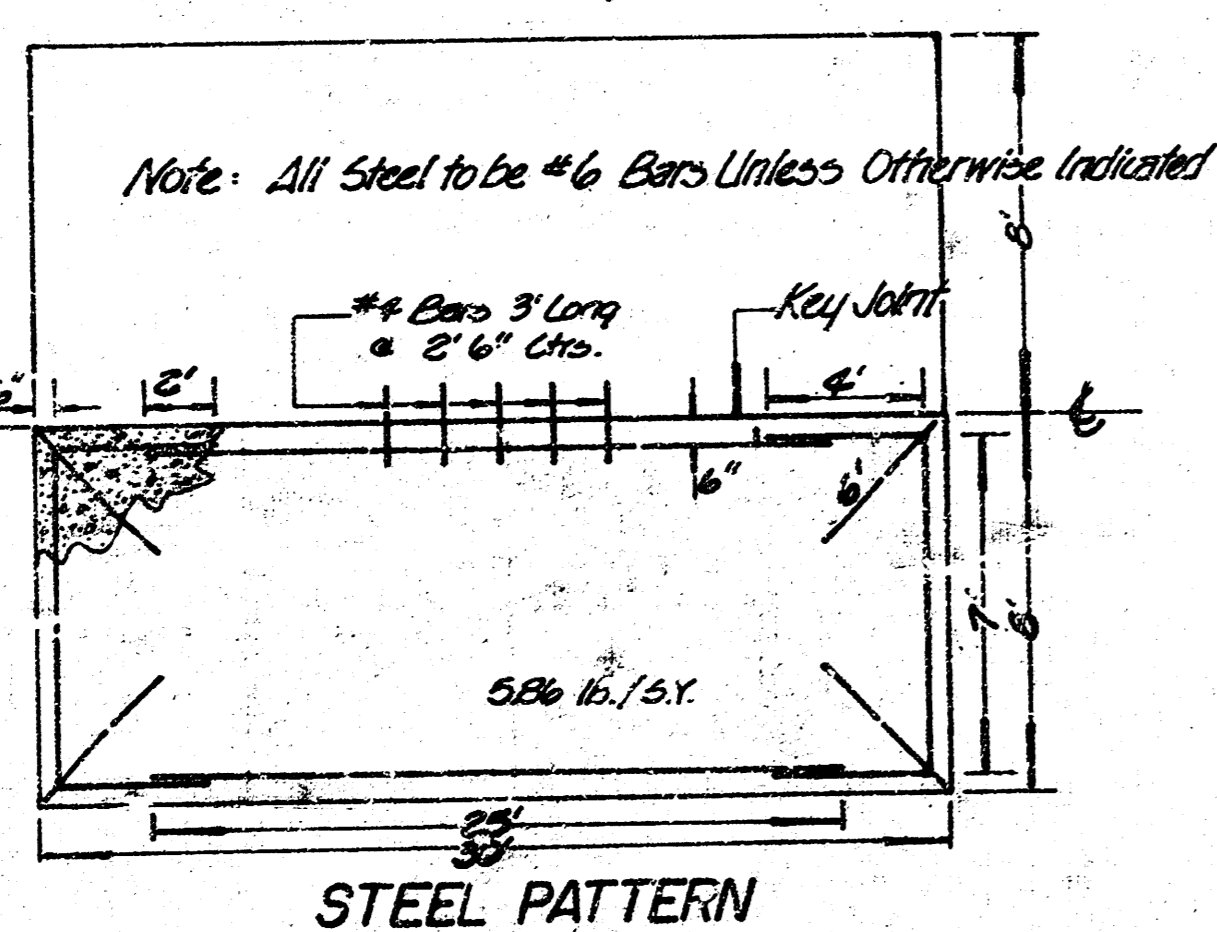
Ⓢ is 10' East of West Alley Line.

Note: Underground Utilities Located On Alley & Or 8' East of West Alley Line. Utilities include 3" Gas Main & 20" Sewer Line.

Pavement Removal = 



Survey Checked  
 Plans Checked  
 Notes Checked



Earthwork Quantities	
Property	City
Excavation = 1558 cy.	Excavation = 25 cy.
+10% = 156 cy.	+10% = 3 cy.
Total = 1714 cy.	Total = 28 cy.
Manipulation = 626.8 cy.	

TYPE OF SUBGRADE TREATMENT SHALL BE DETERMINED BY THE FIELD ENGINEER. SUBGRADE TREATMENT MAY VARY FROM THAT SHOWN HEREIN. CONSULT THE ENGINEER FOR ANY CHANGES TO THIS PLAN OR ANY DIMENSIONS THEREON.

**ALLEY**  
 BETWEEN ST. FRANCIS & SANTA FE  
 FROM N.L. MORRIS TO S.L. GILBERT  
 16' Wide Concrete Pavement  
**CITY OF WICHITA, KANSAS**  
 R.W. LINN CITY ENGINEER  
 PROJECT NO. DAKA 575124  
 DATE: MARCH, 1976

FILMED FROM THE BEST AVAILABLE COPY .....