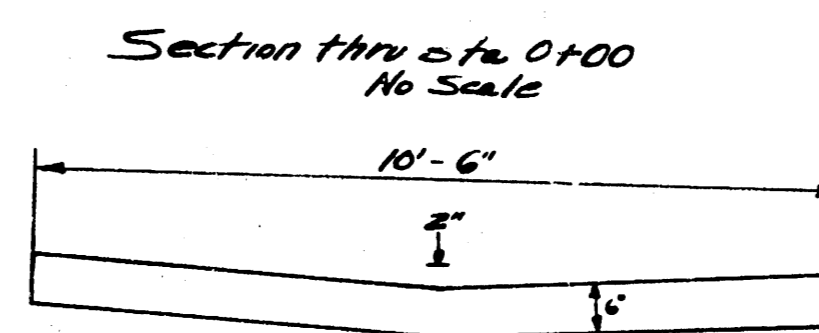
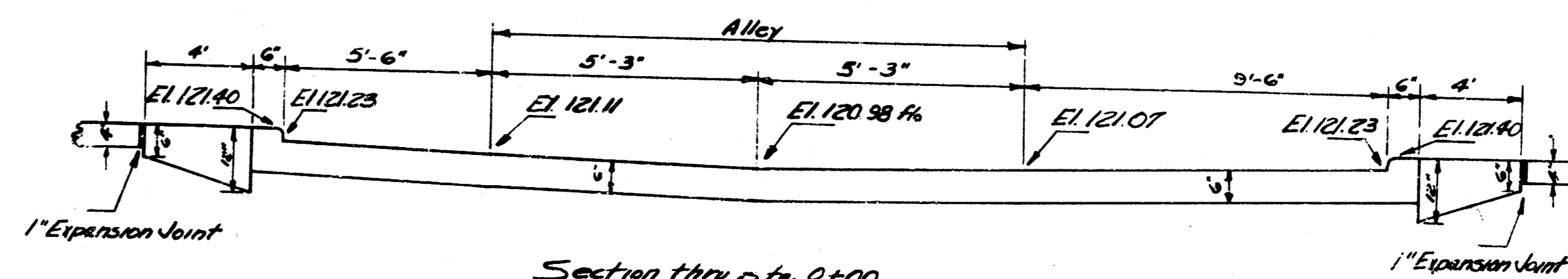
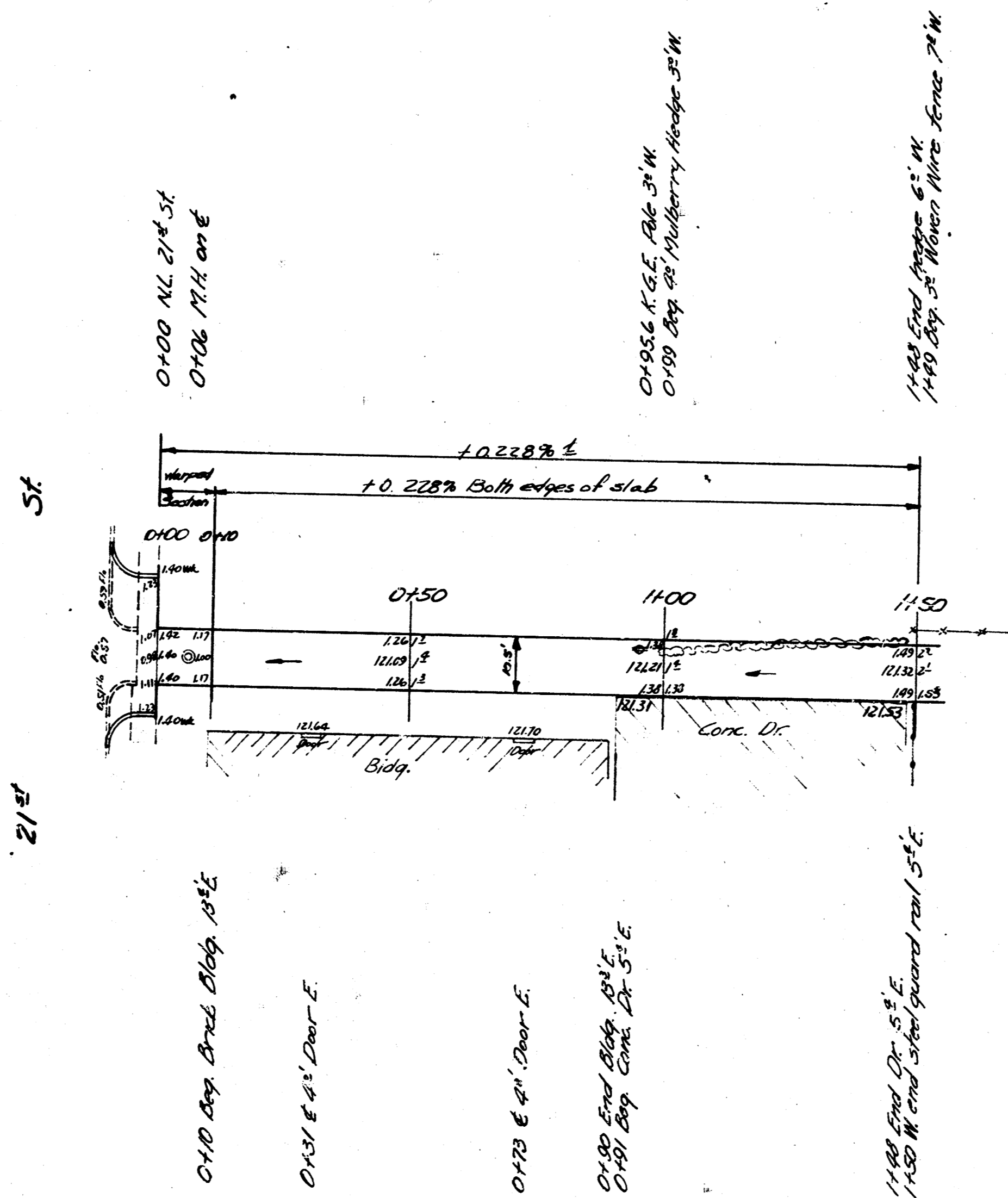
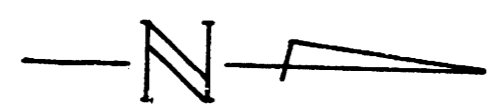
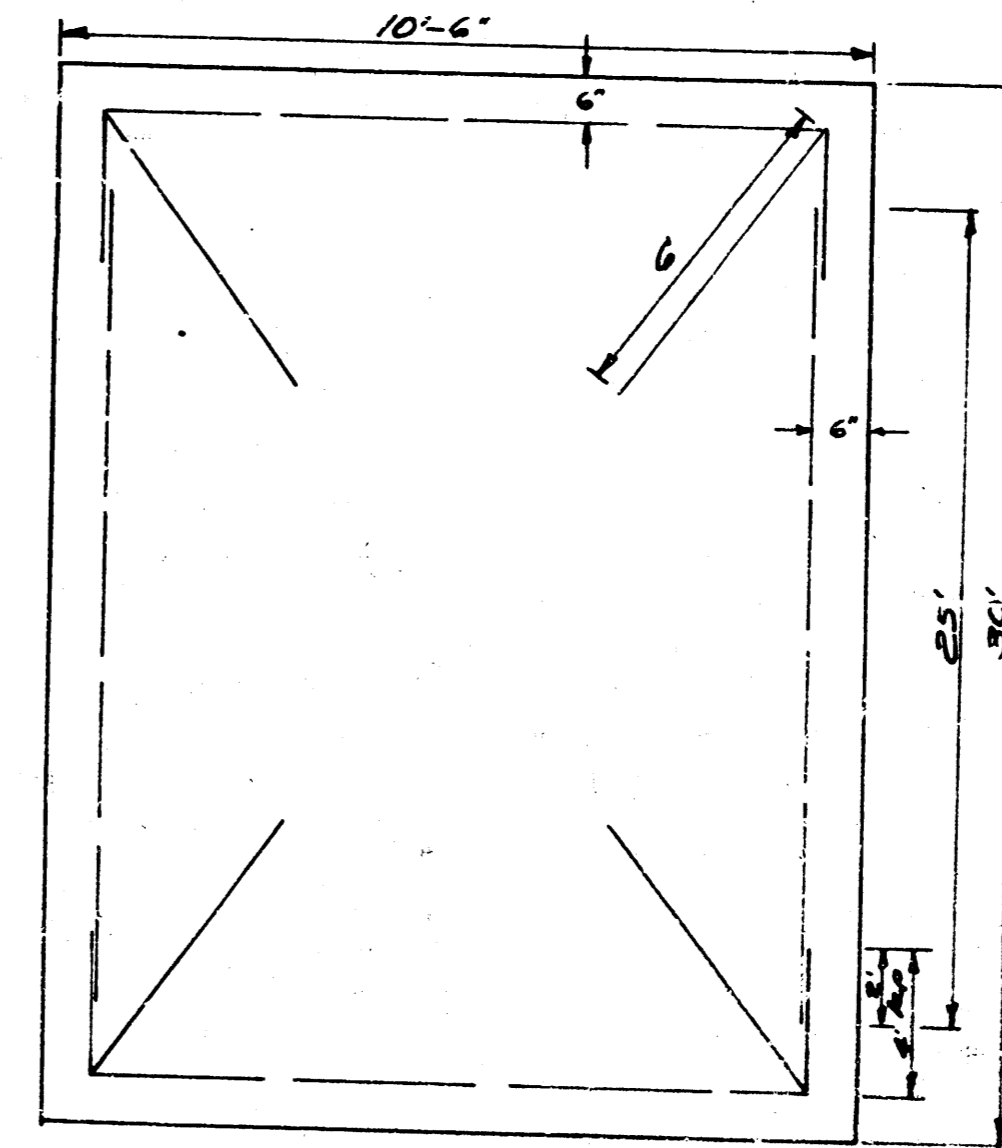


B.M. 122.94 "G" in Globe S. Co. 21st St. W.S. Chestnut St.
 B.M. 121.40 "W" in Wells, V.S. Alley W. of Ark. on W.S. 21st St.
 B.M. 123.55 Spike in S.S. Tel. Pole W.S. of Alley W. of Ark. @ S. Co., 22nd St.

Survey CAMP
 1/2" = 100'
 1/4" = 200'
 1/8" = 400'



Typical Alley Section 0+10 to 1+50
 No Scale



NOTICE: This project was prepared under the supervision of the City Engineer and the performance of the City of Wichita, Kansas. The City Engineer will reimburse the City of Wichita for an equal amount of time, plans, and preparation.

ALLEY
 BTWN SHELTON & ARKANSAS
 N.C. 21st to 150' N. of N.C. 21st
 10.5' - 6" Concrete
 CITY OF WICHITA, KANS.
 D.E. SMITH CITY ENGINEER
 AUG. 1953 PRIVATE JOB