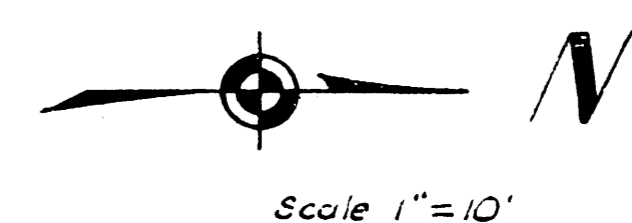
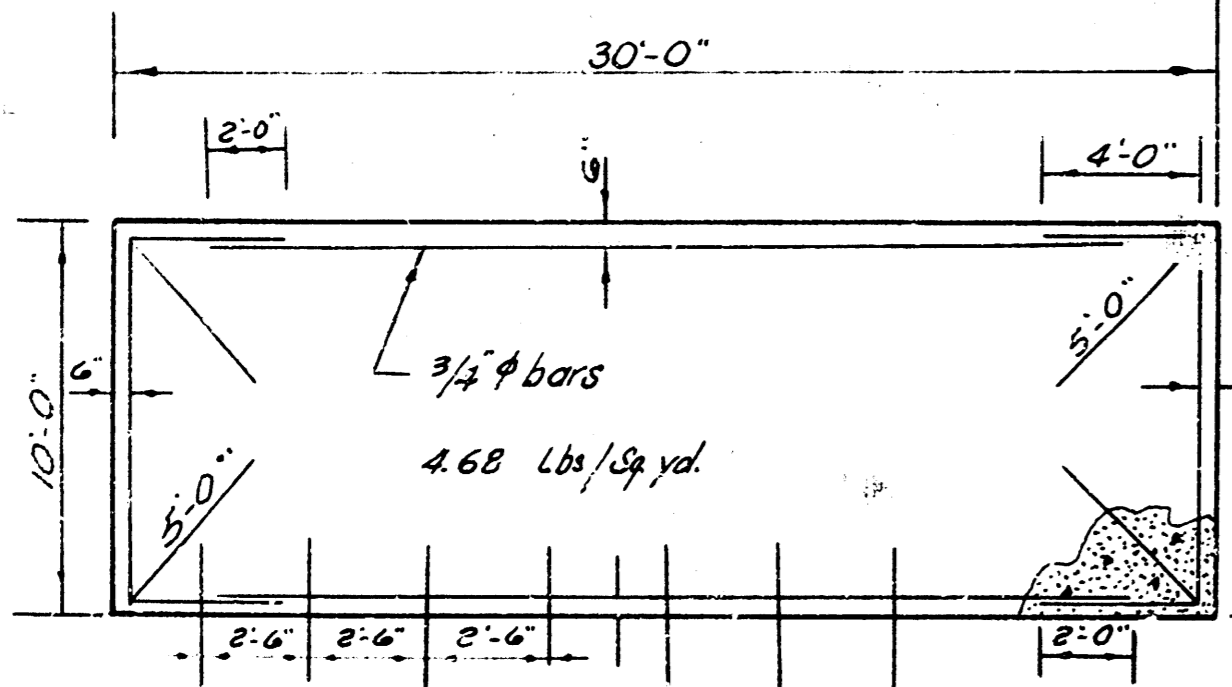
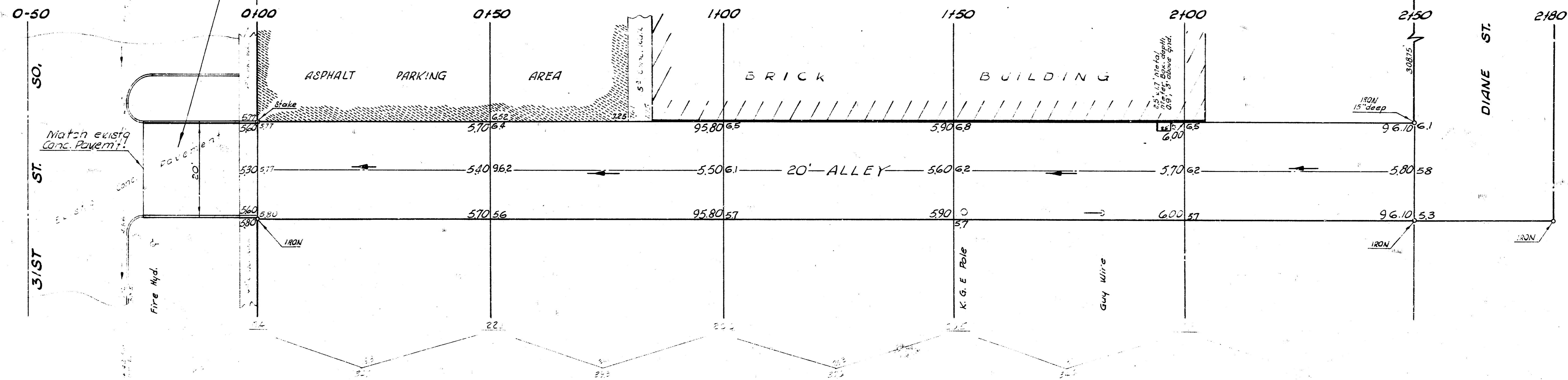


B.M. 97.09 S.W. cor. conc. Porch West Porch of Apt. # 1233 W. 31st. St. So.
 B.M. 95.26 "Q" in Quiring c. uk. W. S.W. cor. Walnut & 31st St. So.
 Base = ± 20' Alley

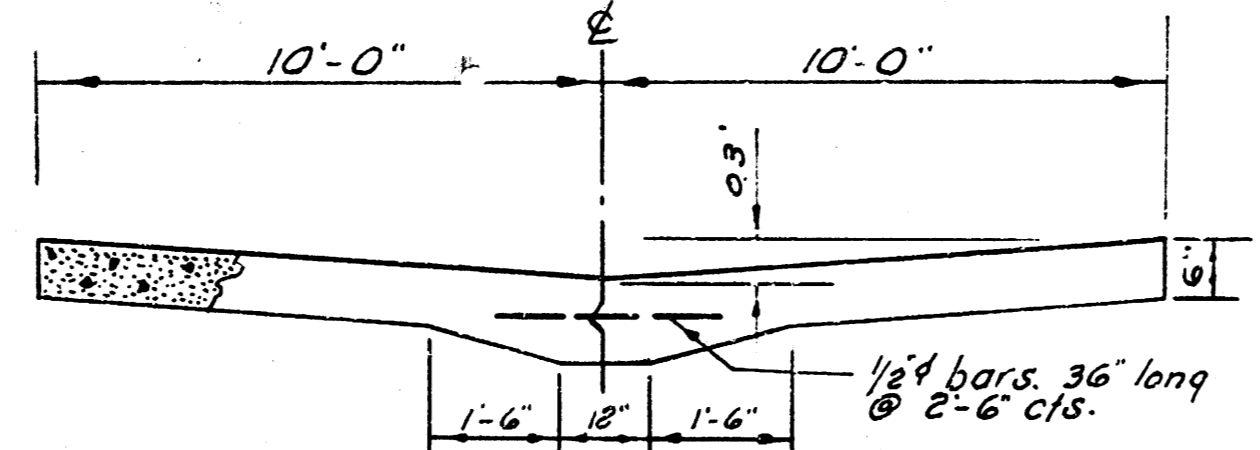
Excavation
 Property
 1710
 +10% 11.1
 188.7 Cu. Yds.



NOTE:
 Remove cross-hatched portion of existing alley return and 4" walk. Reconstruct to new elevations.



REINF. STEEL PATTERN
 No Scale



TYPICAL SECTION - MASTIC JOINT DETAIL
 EXCEPTION AT WARPED SECTIONS
 NO SCALE

ALLEY
 BETW. SENECA & OSAGE
 N/L 31ST ST. SO. TO SL DIANE
 20' CONC. 6"
 CITY OF WICHITA, KANSAS
 B. E. SMITH CITY ENGINEER
 JUNE 1961 PROJ. NO. 210-121

