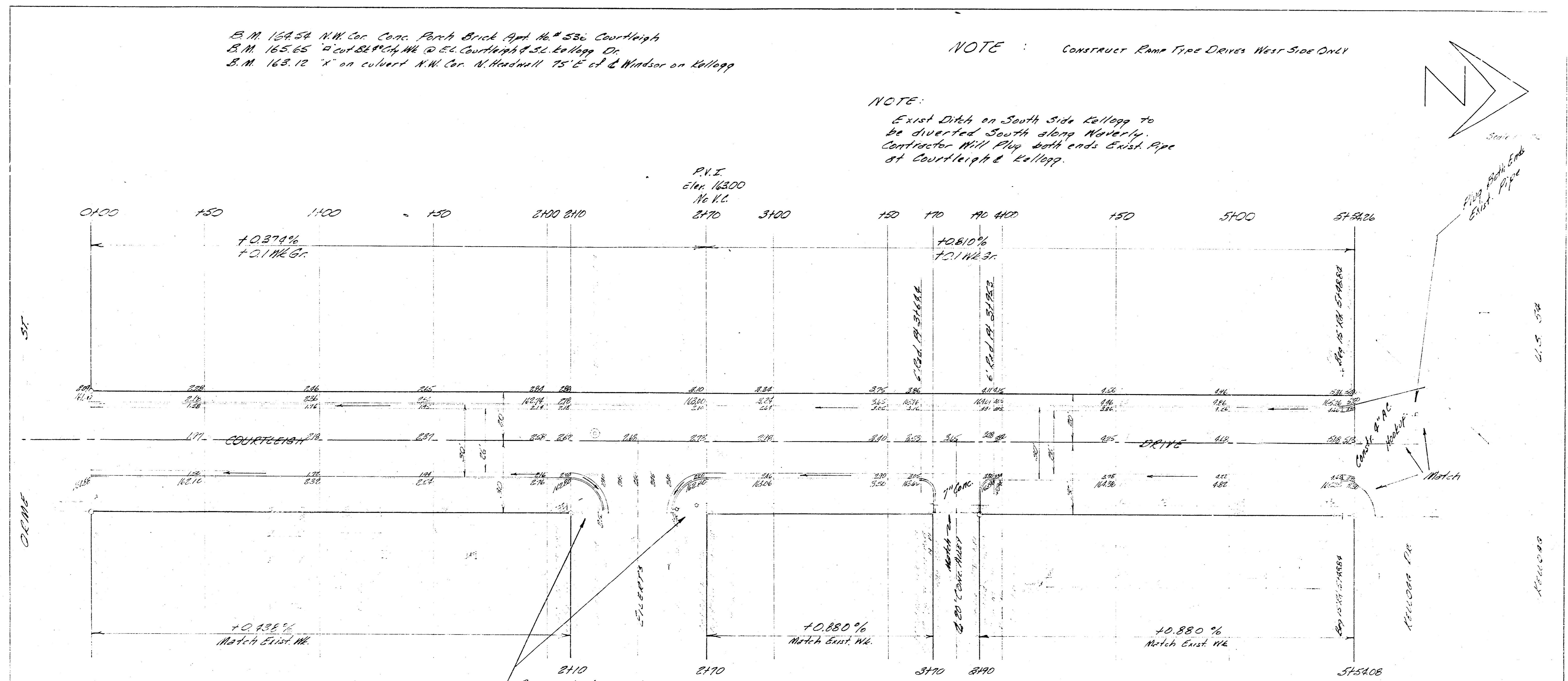
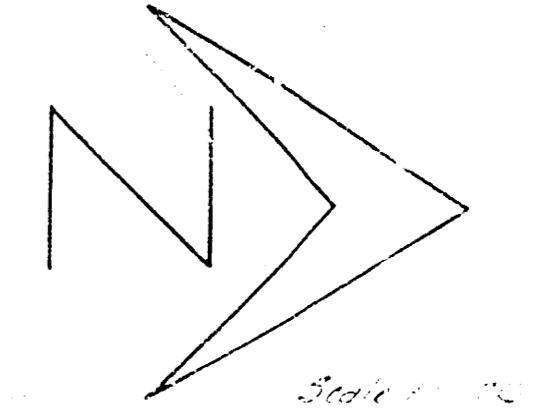


B.M. 164.54 NW Cor. Conc. Porch Brick Apt. No. 536 Courtleigh
 B.M. 165.65 "cut 54" Ch. Wk @ E.C. Courtleigh & S.E. Kellogg Dr.
 B.M. 163.12 "x" on culvert NW Cor. N. Hadwell 75' E of S. Windsor on Kellogg

NOTE: Construct Ramp Type Drives West Side Only

NOTE:
 Exist Ditch on South Side Kellogg to
 be diverted South along Noverly.
 Contractor Will Plug both ends Exist. Pipe
 at Courtleigh & Kellogg.



Assume 30' Wet & R

NOTE To Field Engg
 Field Engg will check thickness of
 exist. Wall & Drive Contin. Remove & Replace
 4" Wall with 6" Drive where necessary.

Excavation		Comp. Fill	
Prop.	City	Prop.	City
597.0 CY	76.5 CY	31.9 CY	4.5 CY
59.7 40%	27.40%	3.3 40%	0.5 40%
656.7 CY Total	842 CY Total	35.1 CY Total	50 CY Total

COURTLEIGH DRIVE
 N.E. Orme To S.E. Kellogg
 26' - 3' - 0" 9.5
 CITY OF WICHITA, KANSAS
 B. E. SMITH, CITY ENGINEER
 DATE 10/15/2011

1/3