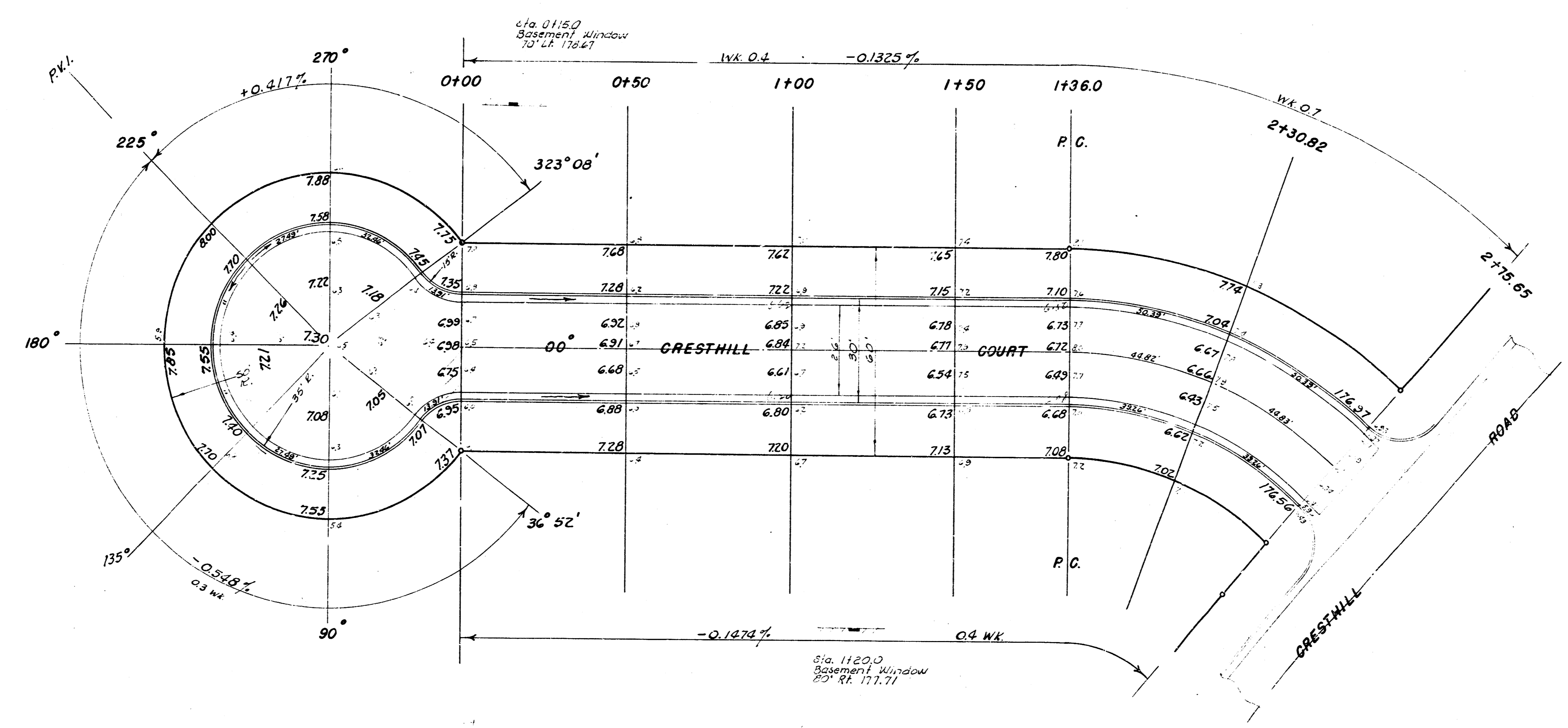


B. M. 182.37 "R" in Ritchie top ab. N. L. Cresthill, W. co. Armour.
 B. M. 16.93 "R" in Ritchie top ab. S. L. Cresthill Ra., W. co. Cresthill, Mo.
 Baseline & Stationing on S. Chain N.



Surveyed by B. E. Smith
 1932
 100' x 100' scale
 1/4" = 100'

CURVE DATA
 Sta. 1+86.00 to Sta. 2+15.65
 Stationing on S. Cresthill Ct.
 MIN. PER. 411. FT. = $\frac{1}{2} = 21^\circ - 15'$
 $R = 120.86'$

STATIONS	Arc length on C.	Chord length	Chord length @ offset from face of west	Chord length @ offset from face of east	DEFLECTION	TOTAL DEFLECTION
1+86.00 P.C.					00° 00' 00"	
2+15.65 P.T.	44.83'	53.05'	36.09'	36.09'	10° 37' 30"	
2+15.65	44.83'	53.05'	36.09'	36.09'	10° 37' 30"	

Sta. 1+86.00 to Sta. 2+15.65
 Stationing on S. Cresthill Ct.
 MIN. PER. 411. FT. = $\frac{1}{2} = 21^\circ - 15'$



CRESTHILL COURT
 S. L. CRESTHILL RD. TO & INCLUDING CUL-DE-SAC
 26' - 2' - 30' A. C.
 CITY OF WICHITA, KANSAS
 B. E. SMITH CITY ENGINEER
 APRIL 1932 PROJ. NO. C18-201