

# STREET IMPROVEMENTS

For

# CURTIS STREET

FROM THE N.L. ROBINSON STREET TO THE N.L. LOT 1, STEVE KELLEY 4TH ADDITION

Project Number

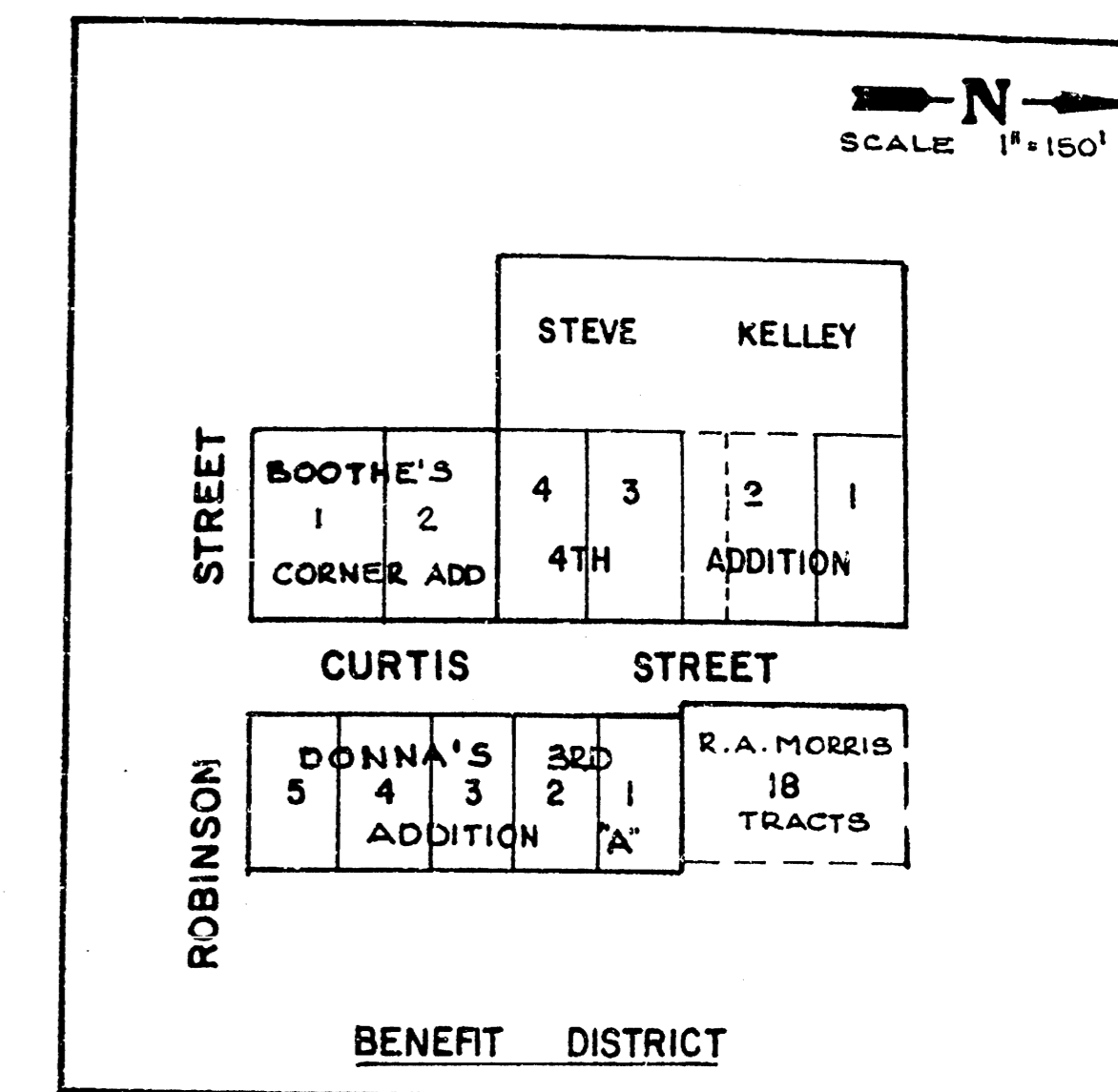
**472-76-245-82487-000-000-001**

Index Code

762708

## CITY OF WICHITA, KANSAS

Michael E. Lindebak, City Engineer



### General Notes

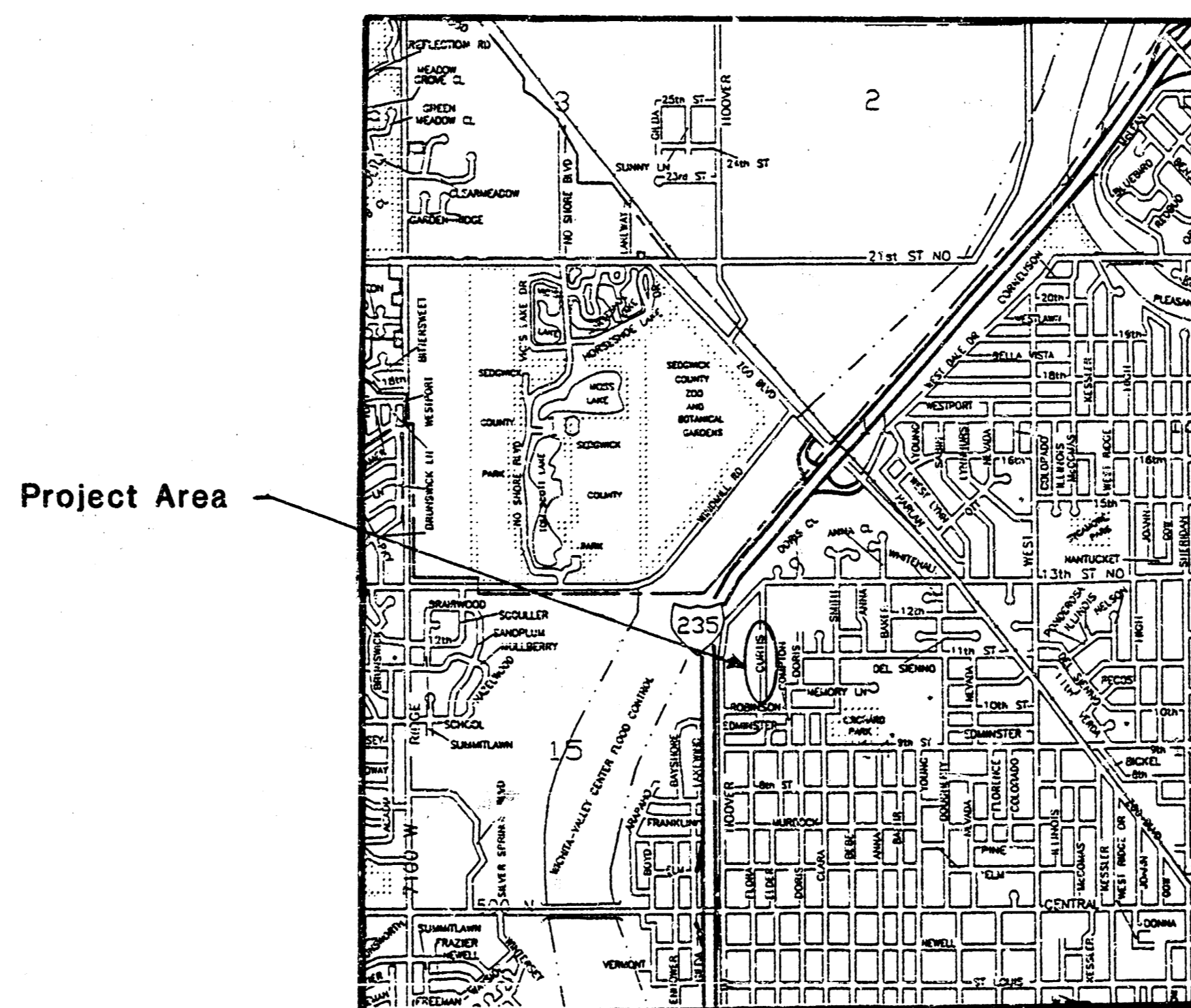
- Contractor will be required to provide notice to utility companies a minimum of twenty-four (24) hours prior to any excavation, as follows:

Kansas One-Call 687-2470

The Contractor must notify the following in case of an emergency:

Cablevision	262-4270
or	263-2061
K.P.L. Gas Service Company	383-8650
Kansas Gas & Electric Company	383-8600
Arkla Gas Company	942-8350
Southwestern Bell Telephone Company	1-571-2611
City of Wichita Water Department	268-4908
City of Wichita Sewer Maintenance	268-4071

- Rubble from the removal of miscellaneous structures and excess excavation which is to be wasted shall be disposed of on sites to be provided by the Contractor. These sites shall be approved by the Engineer as to suitability, appearance and site location. Locations that, in the opinion of the Engineer, will leave an unsightly appearance will not be approved. All disposal sites must be approved by the Kansas Department of Health and Environment. Material either stockpiled or disposed of in a flood plain would require a Kansas State Board of Agriculture permit. Any material dumped in waters of the United States or wetlands is subject to U.S. Corps of Engineers permitting regulations. Any material buried or stockpiled beyond approved construction limits would require additional archaeological investigations unless buried in a previously approved borrow location.
- Limits of earthwork shall match existing ground elevations at the right-of-way line unless otherwise noted on the plans with a new finished grade elevation. When a new finished grade elevation is shown, the earthwork shall extend one foot beyond the right-of-way line and then sloped up or down using permissible slopes to match the existing ground surface.
- The Contractor shall be responsible for preserving property irons. The Contractor will be required to re-establish any property irons which are damaged or destroyed by his construction operations. Such irons shall be re-established by a licensed land surveyor in accordance with state law.
- All areas disturbed by construction operations shall be temporarily seeded with rye grass (8 lbs./1000 sq. ft.) immediately following construction in that area.
- The bid item site restoration shall include all finished grading, final site grading, all erosion construction items and any other items as necessary for final completion and acceptance of project.



### BENCHMARK:

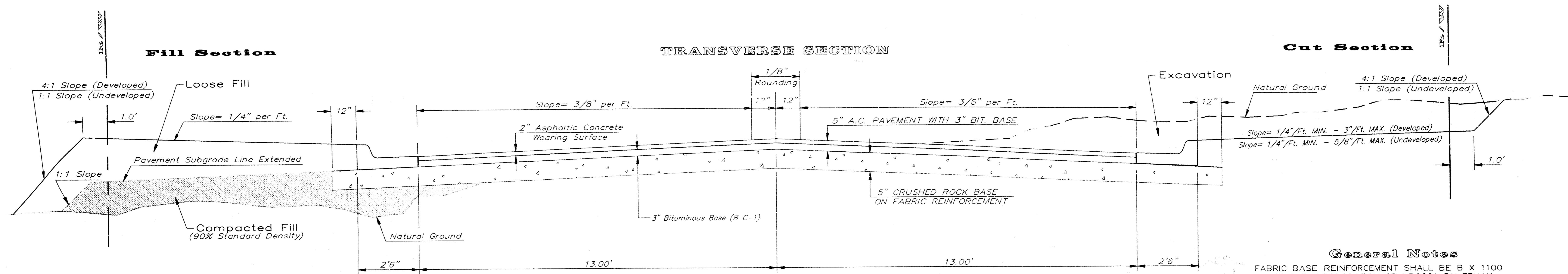
R.R. Spike in North Side of Power Pole/Light Pole on Northeast Corner of Curtis and Robinson.  
Elev. = 128.89 City Datum

### INDEX:

- |   |                          |
|---|--------------------------|
| 1 | Title Sheet              |
| 2 | 31" Pavement Detail      |
| 3 | Curtis Street            |
| 4 | Earthwork Cross Sections |



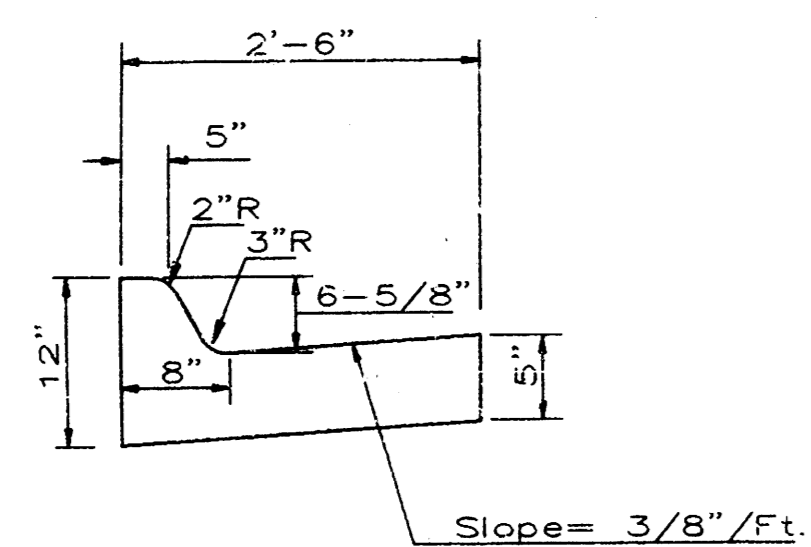
# TYPICAL 31' B-B PAVEMENT DETAILS



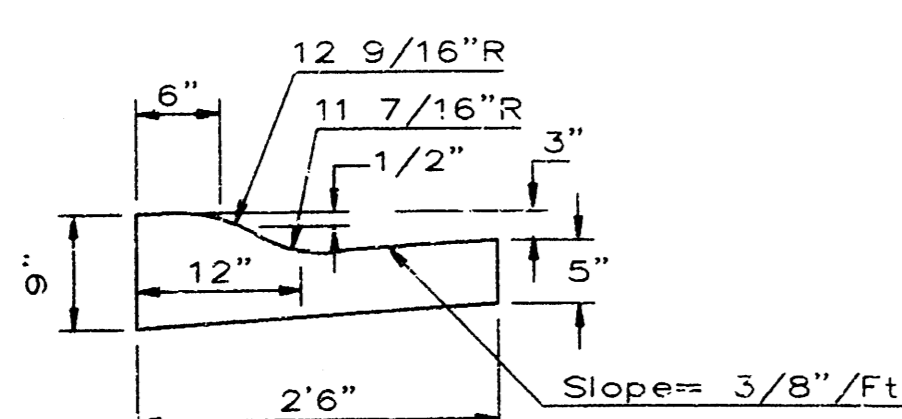
## CRUSHED ROCK GRADATION REQUIREMENTS PERCENT OF AGGREGATE RETAINED

2-1/2"	0
3/4"	20 - 60
#4	50 - 80
#40	80 - 94
#200	90 - 98

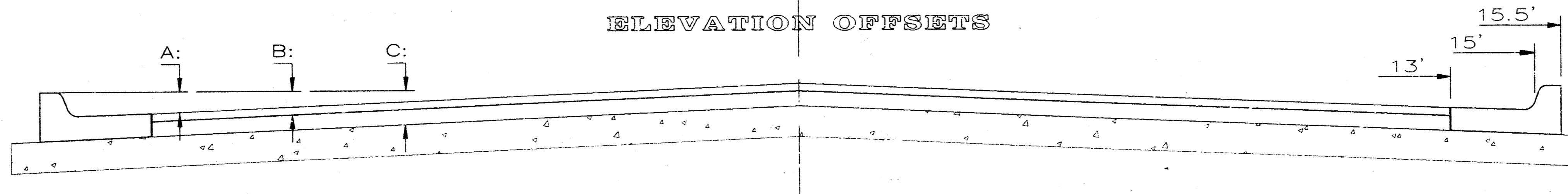
ROCK QUALITY SHALL CONFORM TO THE REQUIREMENTS SPECIFIED BY THE KDOT 1990 EDITION STANDARD SPECIFICATION SUBSECTION 1102 FOR DURABILITY CLASS I.



COMBINED CURB & GUTTER

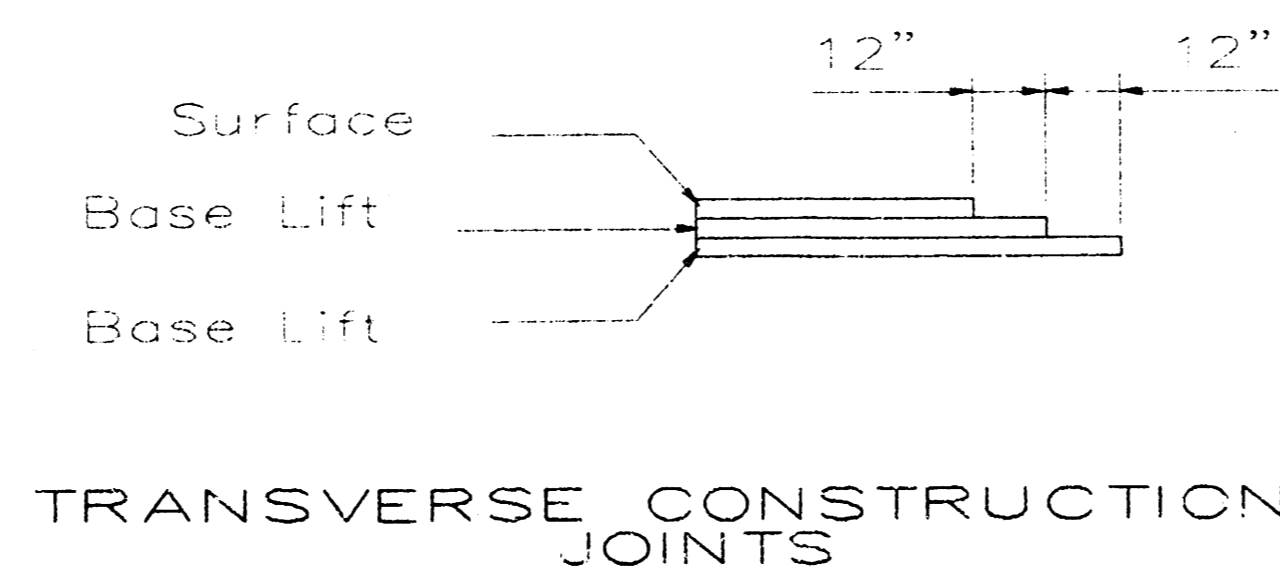


COMBINED ROLL TYPE CURB & GUTTER



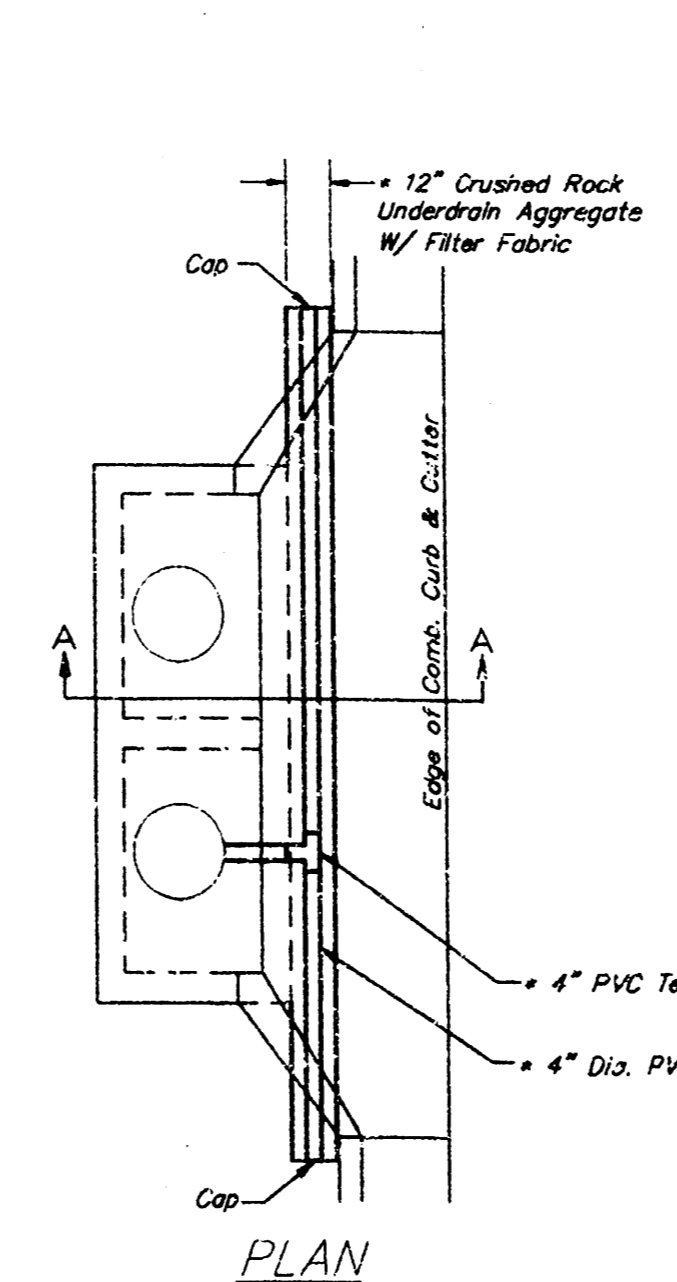
ELEVATION OFFSETS

	DISTANCE FROM CENTERLINE (LT. & RT.)										
	0'	2'	4'	6'	7.5'	10'	12'	13'	15'	15.5'	16.5'
A: Top of Curbs to Top of Surface Lift	0.10	0.14	0.21	0.27	0.32	0.39	0.46	0.49	-	-	-
B: Top of Curbs to Top of Upper Base Lift	0.27	0.31	0.37	0.44	0.48	0.56	0.62	0.65	-	-	-
C: Top of Curbs to Top of C.R. Subgrade	0.52	0.56	0.62	0.69	0.73	0.81	0.87	0.90	0.97	0.98	1.01



TRANSVERSE CONSTRUCTION JOINTS

Transverse construction joints shall be constructed in flexible base pavements at locations where pavement joints existing flexible base pavement as shown by the detail. All costs associated with the construction of the transverse joint shall be included in the bid price for Square Yards 5" ASPHALTIC CONCRETE (3" BITUMINOUS BASE).

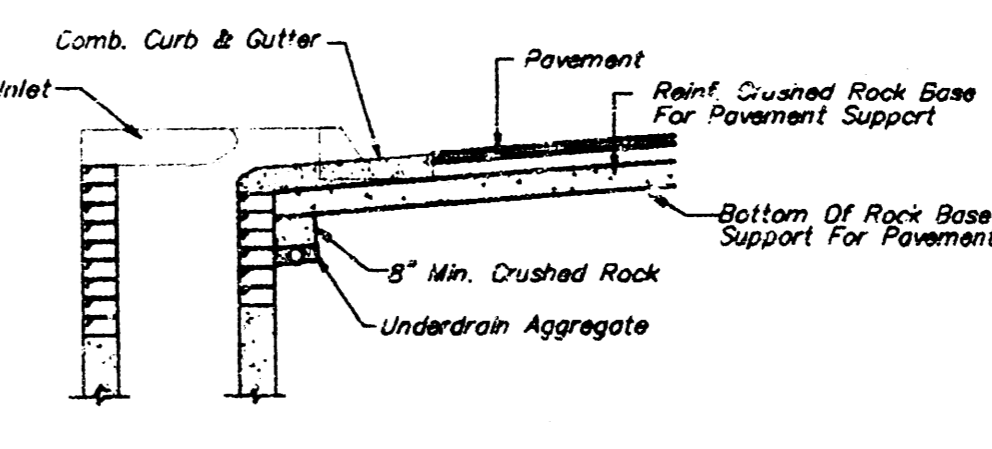


UNDERDRAIN AGGREGATE  
Percent of Aggregate Retained

1"	0
3/4"	0 to 10
3/8"	45 to 80
#4	90 to 100
#8	95 to 100

Rock Quality Shall Conform To The Requirements Specified By K.D.O.T. 1990 Edition Standard Specification Subsection 1102 For Durability Class I.

NOTE: Place 4" PVC Perforated Pipe at all drainage sump locations.  
Cost of Underdrain System to be incidental to the Reinforced Crushed Rock Subgrade.  
Inlet Fee May Vary From That Shown.



SECTION A-A

PAVEMENT UNDERDRAIN DETAIL  
NOT TO SCALE

**General Notes**

FABRIC BASE REINFORCEMENT SHALL BE B X 1100 BY TENSAR CORPORATION OR LB0201 BY TENAX CORPORATION OR APPROVED EQUAL. FABRIC BASE REINFORCEMENT SHALL BE INSTALLED IN ACCORDANCE WITH MANUFACTURER'S RECOMMENDATIONS.

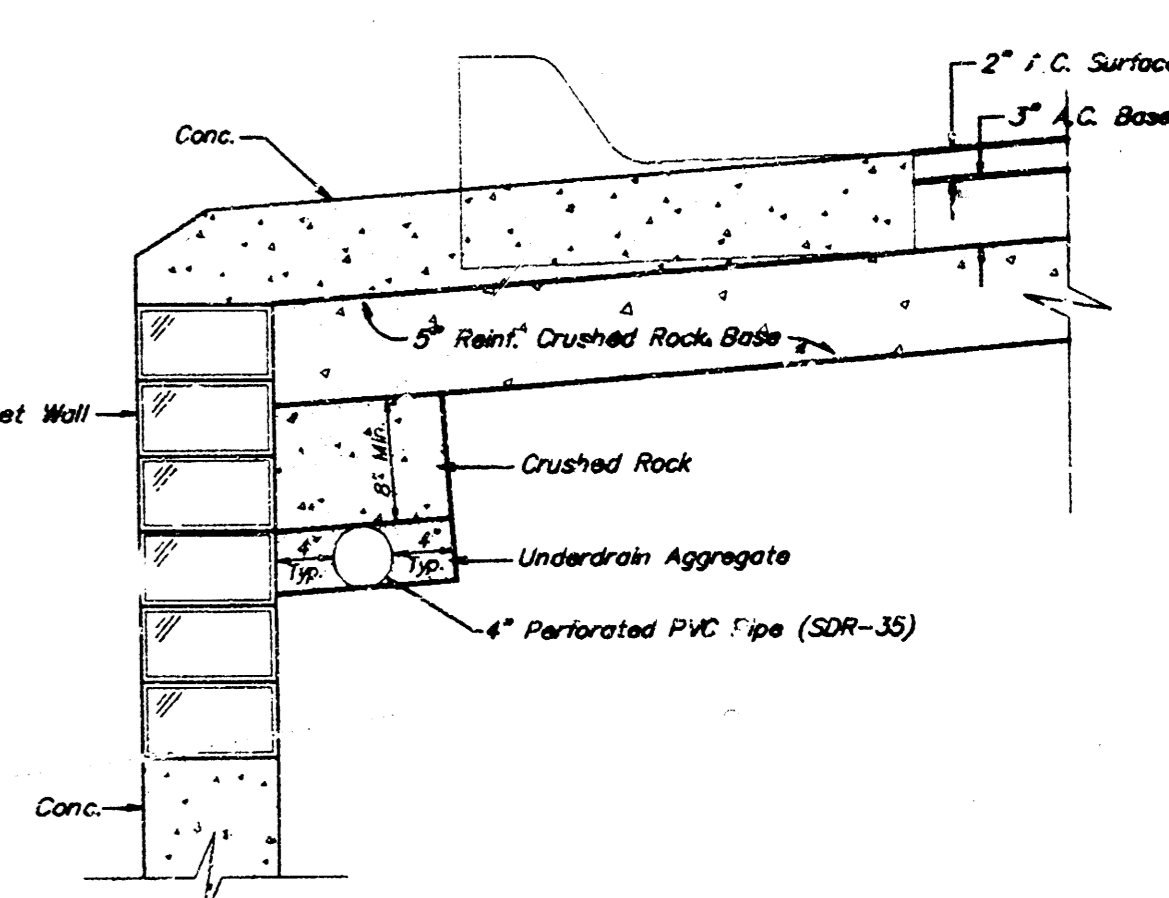
ROCK BASE IS TO BE COMPACTED AND SMOOTHED WITH A STEEL FACED ROLLER PRIOR TO PLACEMENT OF ASPHALT. TACK COAT WILL NOT BE APPLIED TO ROCK BASE.

A TACK COAT OF EMULSIFIED ASPHALT (SC-1H OR CSS-1H) SHALL BE APPLIED AT AN APPROXIMATE RATE OF 0.05 GALLONS PER SQUARE YARD BETWEEN EACH LIFT OF ASPHALTIC MATERIAL.

BITUMINOUS BASE AND ASPHALTIC CONCRETE WEARING SURFACE SHALL BE PLACED WITH A LAYDOWN MACHINE HAVING AUTOMATIC CONTROLS FOR LINE AND GRADE.

CONSTRUCTION JOINTS IN EACH LIFT SHALL BE STAGGERED A MINIMUM DISTANCE OF ONE (1) FOOT FROM JOINTS IN PRECEDING LIFTS AND PLACED SO THAT A JOINT WILL BE CONSTRUCTED ON THE CENTERLINE OF THE TOP LIFT.

THE ASPHALTIC CONCRETE PAVEMENT BETWEEN THE COMBINED CURB AND GUTTER SHALL BE PAID AS SQUARE YARDS OF 5" ASPHALTIC CONCRETE (3" BITUMINOUS BASE).



TRENCH DRAIN DETAIL FOR RES. STREETS  
NOT TO SCALE

5 INCH Residential Asphaltic Concrete Pavement with Crushed Rock Base on Fabric Reinforcement  
City of Wichita, Kansas

**BAUGHMAN COMPANY P. A.**  
ENGINEERING & SURVEYING  
316/262-7271 • 315 ELLIS • WICHITA, KANSAS 67211

PROJECT NUMBER  
**472-76-245-82487-000-000-001**

DESIGN DRAWN APPROVED DATE SCALE

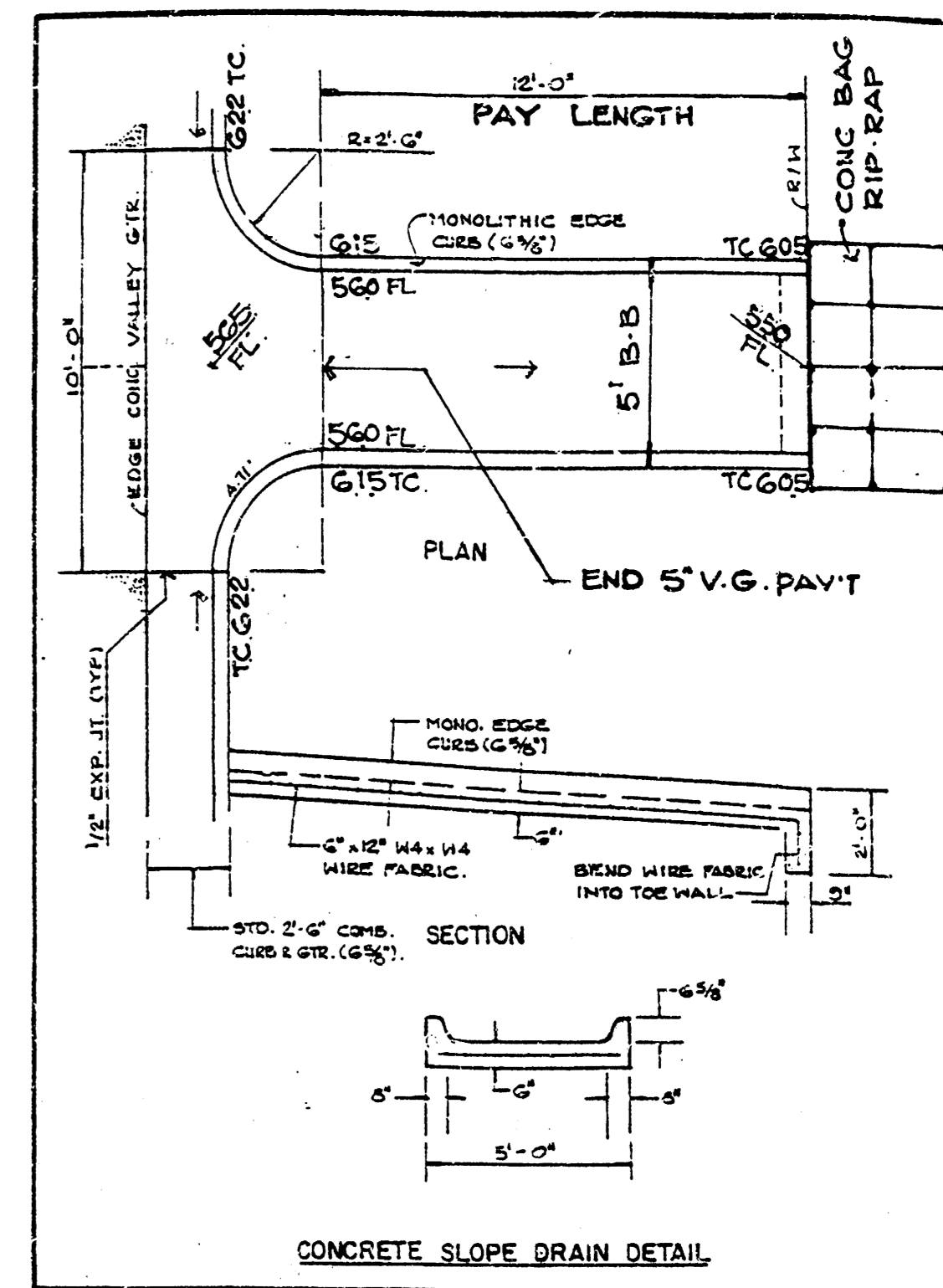
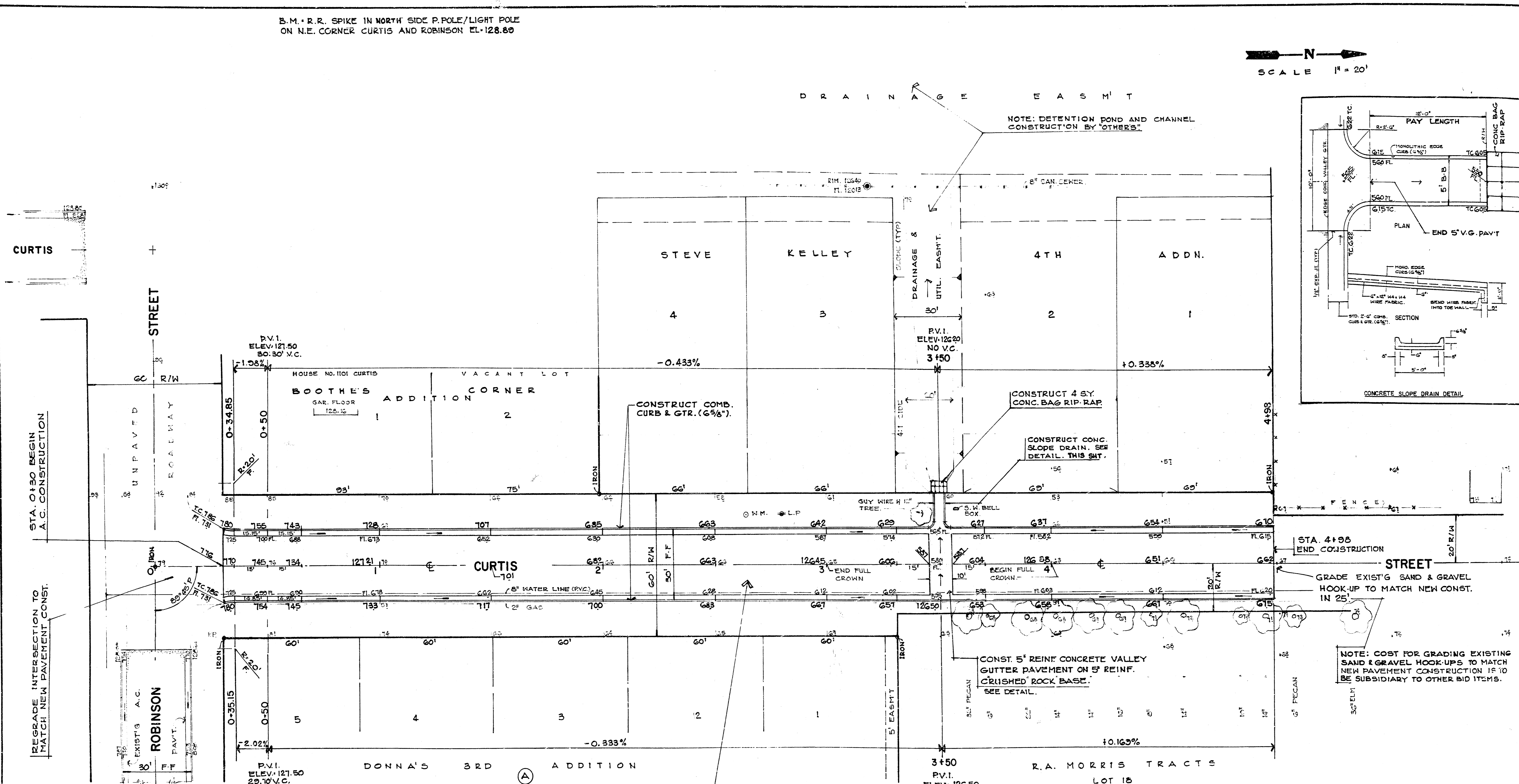
SHEET **2** OF **4**

B.M. R.R. SPIKE IN NORTH SIDE P. POLE/LIGHT POLE  
ON N.E. CORNER CURTIS AND ROBINSON EL-128.89

SCALE 1" = 20'

DRAINAGE EAST

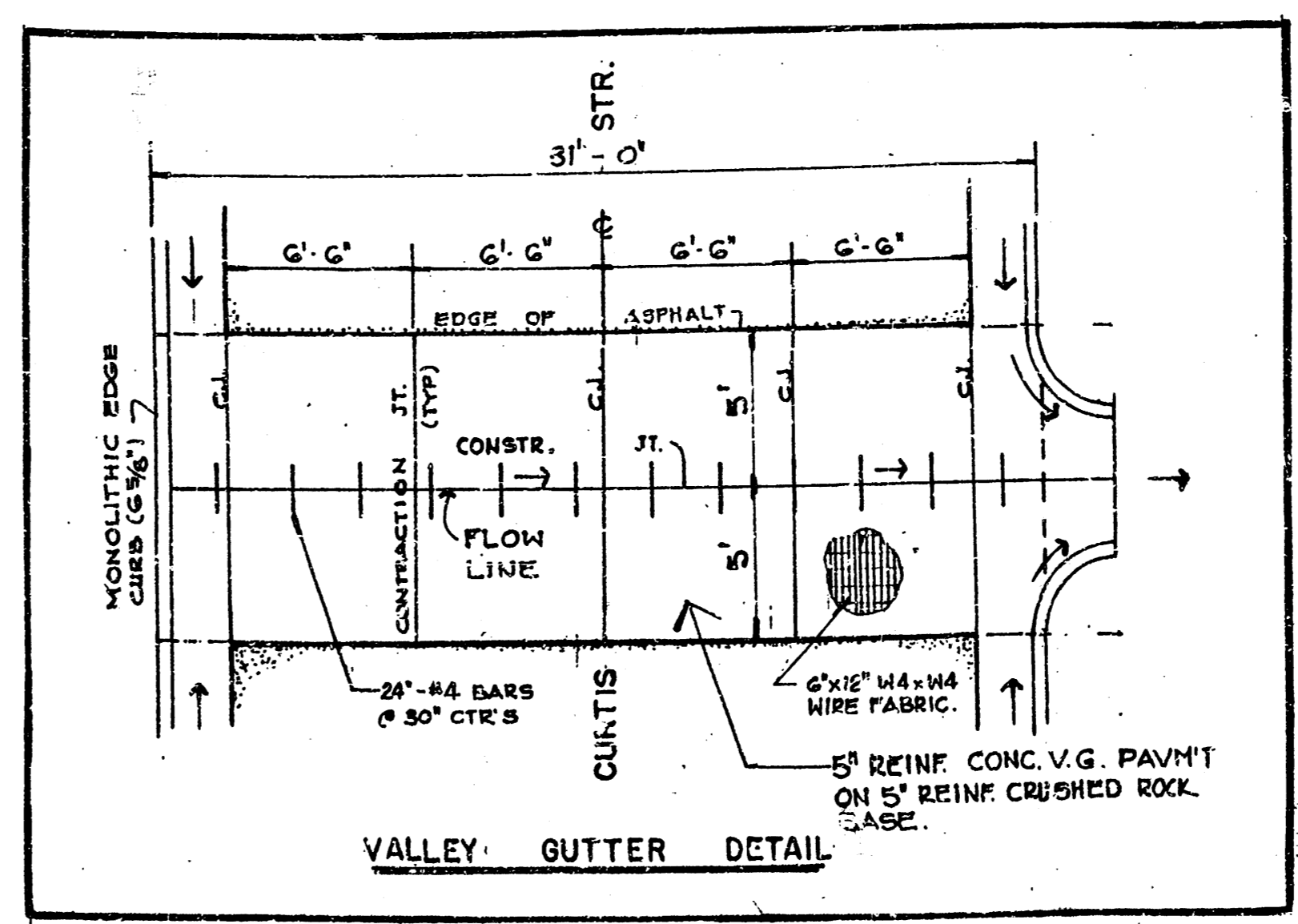
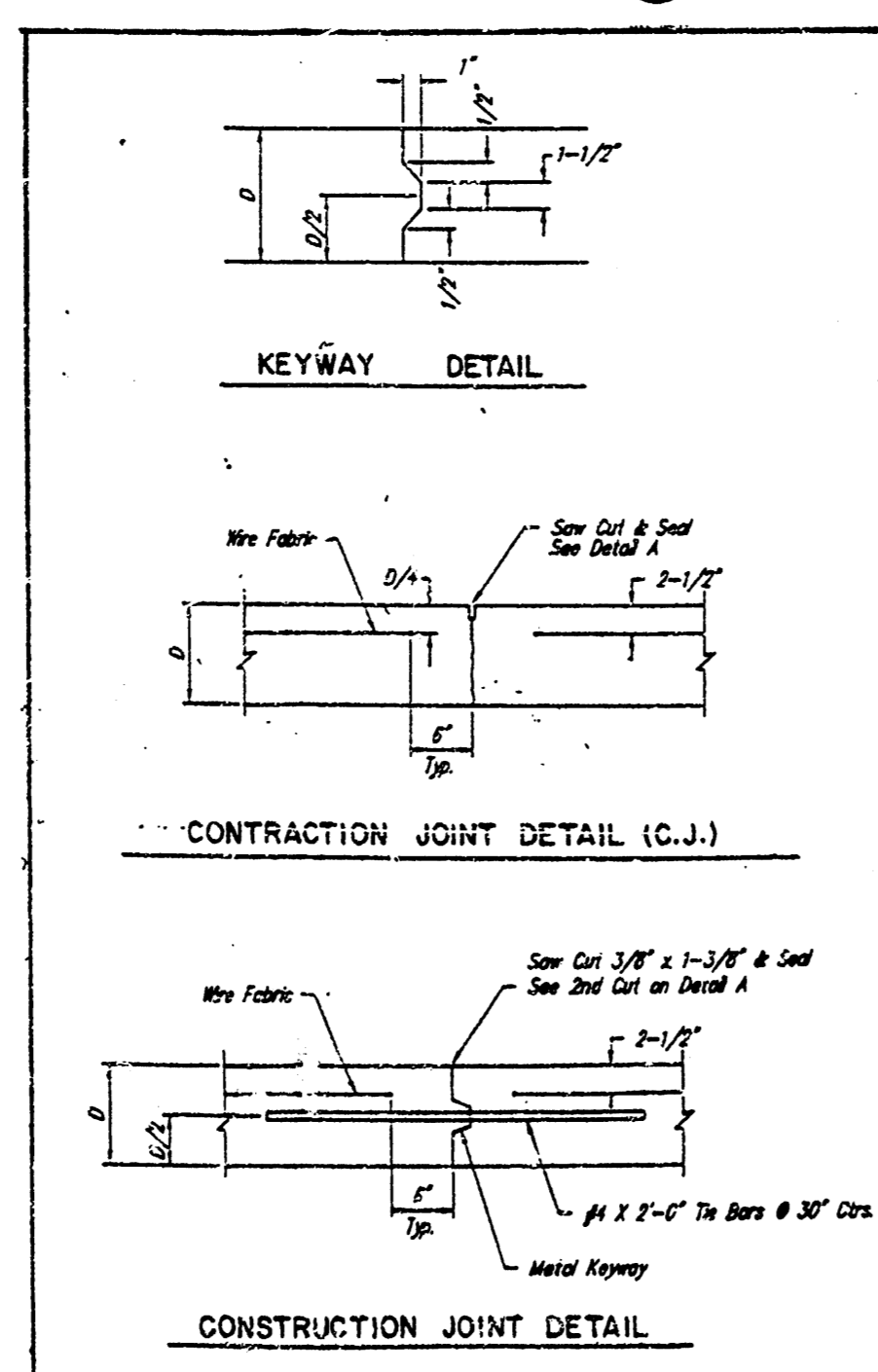
NOTE: DETENTION POND AND CHANNEL  
CONSTRUCTION BY OTHERS



NOTE: COST FOR GRADING EXISTING SAND & GRAVEL HOOK-UPS TO MATCH NEW PAVEMENT CONSTRUCTION IS TO BE SUBSIDIARY TO OTHER BID ITEMS.

CONSTRUCT 5" A.C. PAVEMENT ON 5" REINF. CRUSHED ROCK BASE.

EARTHWORK  
EXCAVATION = 489.6 CU. YDS  
COMP. FILL = 0.0 CU. YDS



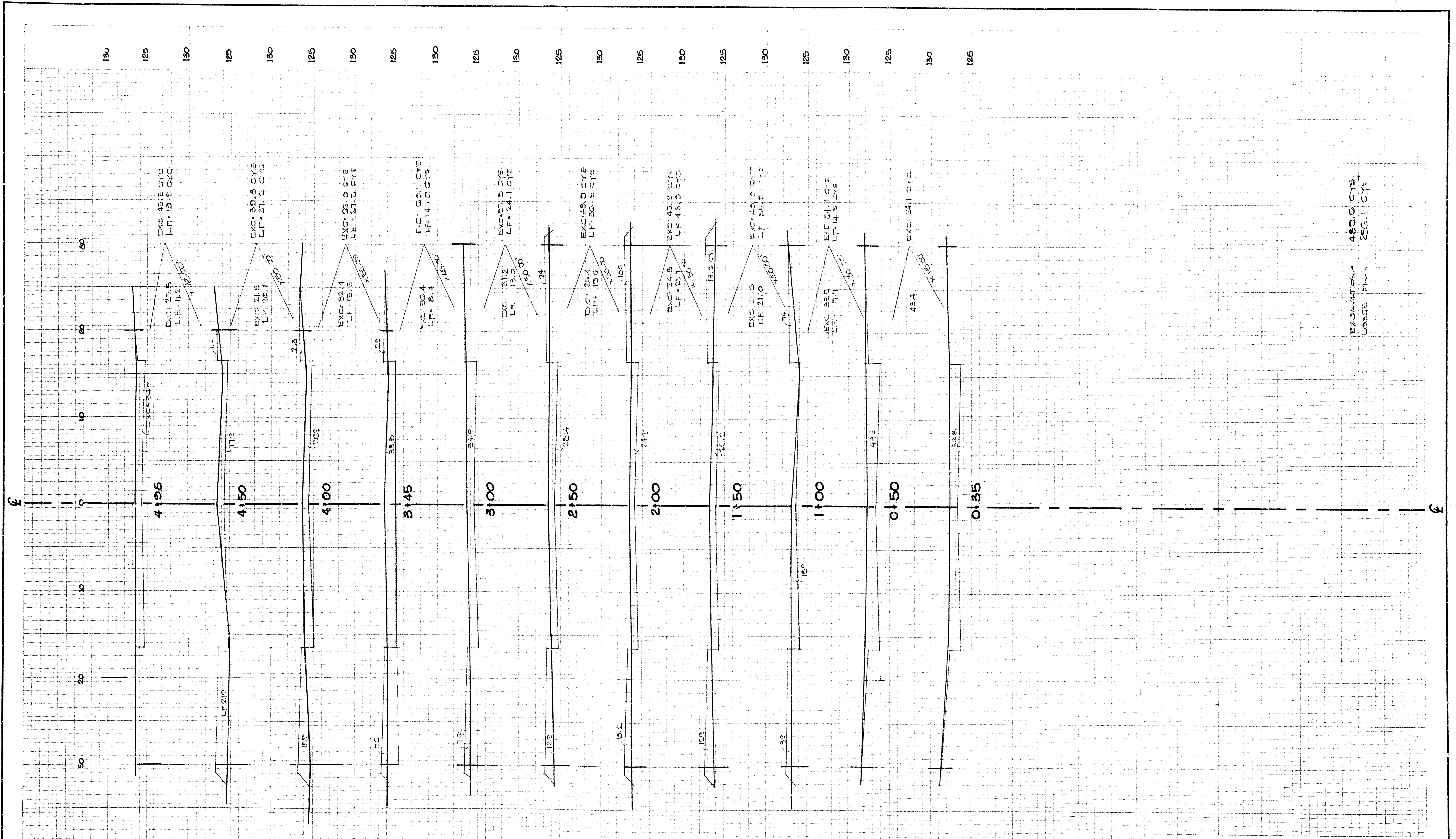
**CURTIS STREET**  
N.L. ROBINSON STREET TO THE N.L. LOT 1, STEVE KELLEY 4TH ADDITION.

**BAUGHMAN COMPANY P.A.**  
ENGINEERING & SURVEYING  
315-262-7271 • 315 ELLIS • WICHITA, KANSAS 67211

PROJECT NUMBER: 472-76-245-82487-000-000-001

DESIGN: NEW, DRAWN: MEE, APPROVED: [Signature], DATE: 9-94, SCALE: 1" = 20'

SHEET 3 OF 4



EXCAVATION = 480.9 CYS  
 FILL = 252.1 CYS