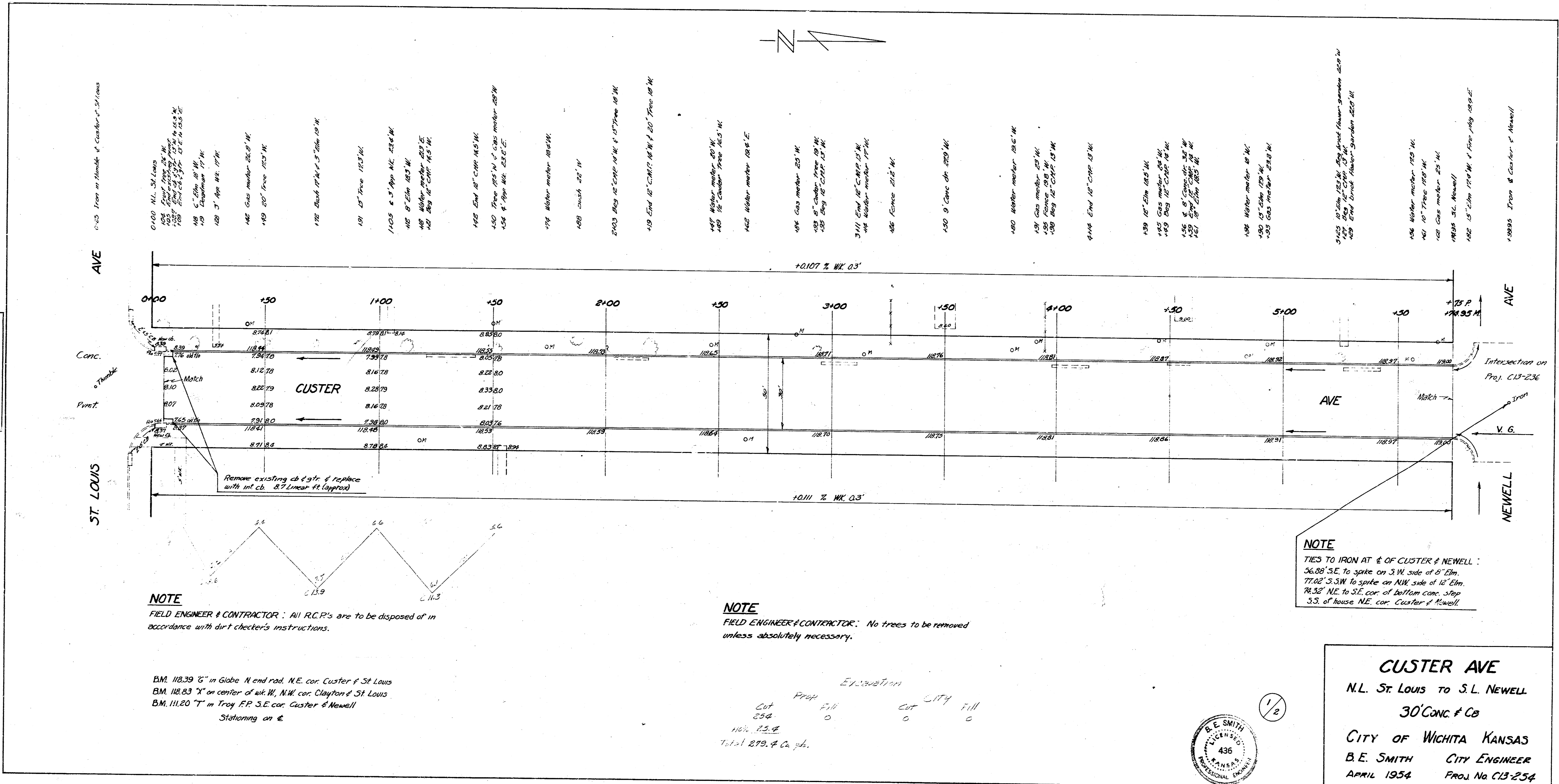


STANDARD SPECIFICATIONS FOR HIGHWAY CONSTRUCTION



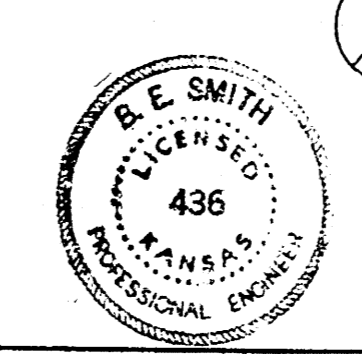
NOTE
FIELD ENGINEER & CONTRACTOR: All R.C.P.'s are to be disposed of in accordance with dirt checker's instructions.

NOTE
FIELD ENGINEER & CONTRACTOR: No trees to be removed unless absolutely necessary.

NOTE
TIES TO IRON AT E. OF CUSTER & NEWELL:
56.88' S.E. to spike on S.W. side of 8' Elm.
77.02' S.W. to spike on N.W. side of 12' Elm.
74.32' N.E. to S.E. cor. of bottom conc. step
33' of house N.E. cor. Custer & Newell.

BM. 118.39 "G" in Globe N end road N.E. cor. Custer & St. Louis
BM. 118.83 "X" on center of sk. W. N.W. cor. Clayton & St. Louis
BM. 111.20 "T" in Troy P.P. S.E. cor. Custer & Newell
Stationing on E.

Excavation
Cut 25.8
Prop 0
Total 25.8
Total 279.4 Cu. Yds.



CUSTER AVE
N.L. ST. LOUIS TO S.L. NEWELL
30' CONC & CB
CITY OF WICHITA KANSAS
B.E. SMITH CITY ENGINEER
APRIL 1954 PROJ. No. C13-254